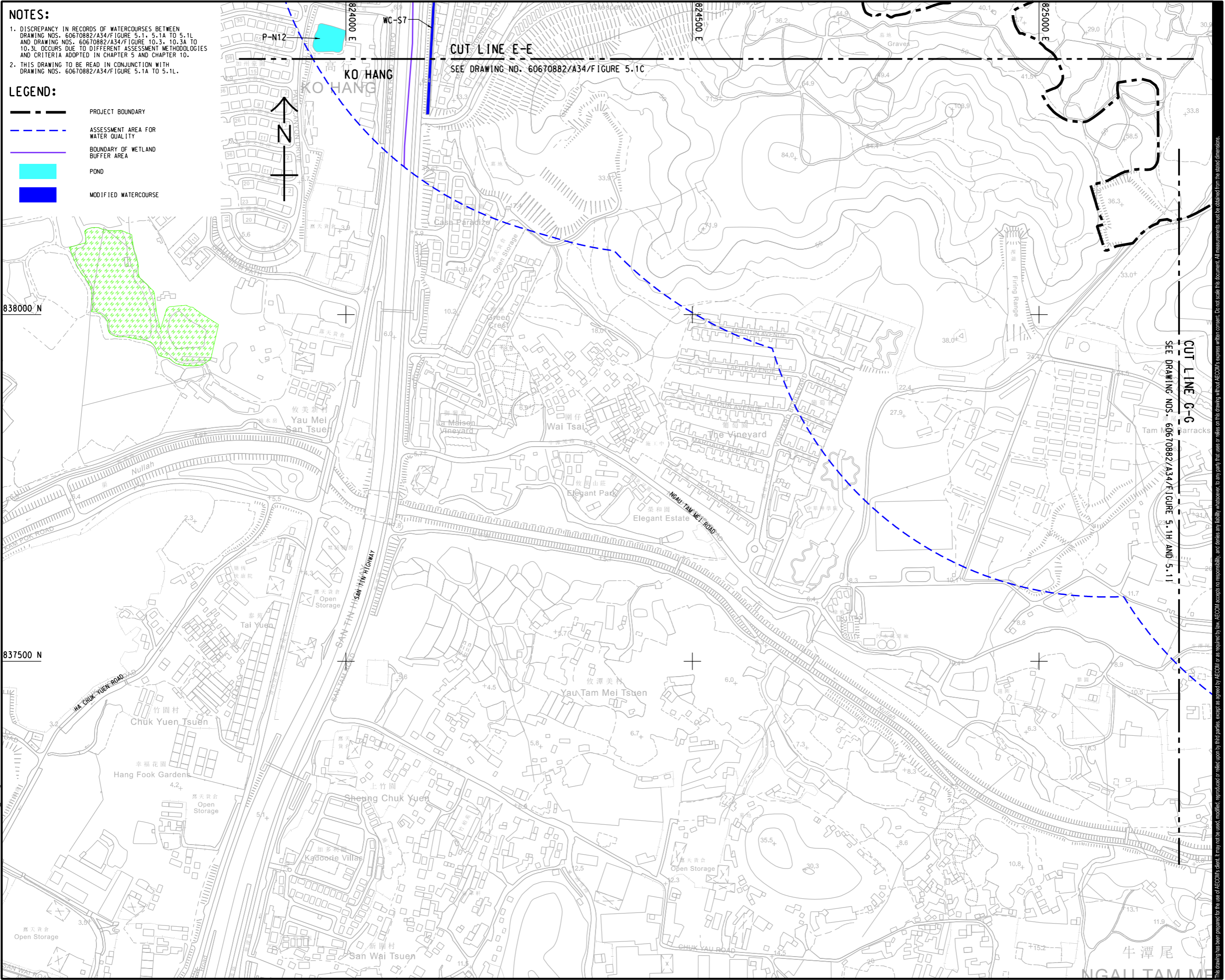


ISO A1 594mm x 841mm
Approved:
Checked:
Designer:
Project Management Initials:



NOTES:
 1. DISCREPANCY IN RECORDS OF WATERCOURSES BETWEEN DRAWING NOS. 60670882/A34/FIGURE 5.1, 5.1A TO 5.1L AND DRAWING NOS. 60670882/A34/FIGURE 10.3, 10.3A TO 10.3L OCCURS DUE TO DIFFERENT ASSESSMENT METHODOLOGIES AND CRITERIA ADOPTED IN CHAPTER 5 AND CHAPTER 10.
 2. THIS DRAWING TO BE READ IN CONJUNCTION WITH DRAWING NOS. 60670882/A34/FIGURE 5.1A TO 5.1L.

LEGEND:
 - - - PROJECT BOUNDARY
 - - - ASSESSMENT AREA FOR WATER QUALITY
 - - - BOUNDARY OF WETLAND BUFFER AREA
 [Cyan Box] POND
 [Blue Box] MODIFIED WATERCOURSE



PROJECT
 項目
 FIRST PHASE DEVELOPMENT OF THE NEW TERRITORIES NORTH – SAN TIN / LOK MA CHAU DEVELOPMENT NODE – INVESTIGATION

CLIENT
 業主
 土木工程拓展署
 Civil Engineering and Development Department
 規劃署
 Planning Department

CONSULTANT
 工程顧問公司
 AECOM Asia Company Ltd.
 www.aecom.com

SUB-CONSULTANTS
 分判工程師/顧問公司

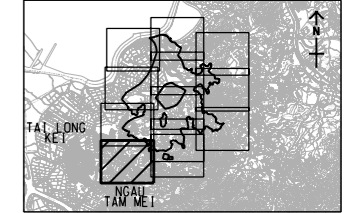
ISSUE/REVISION
 修訂

IR	DATE	DESCRIPTION	CHK.

STATUS
 階段

SCALE
 比例
 A3 1 : 5000
DIMENSION UNIT
 尺寸單位
 METRES

KEY PLAN A3 1 : 250000
 索引圖



PROJECT NO.
 項目編號
 60670882
AGREEMENT NO.
 協議編號
 CE 20/2021

SHEET TITLE
 圖紙名稱

LOCATIONS OF WATER SENSITIVE RECEIVERS

SHEET NUMBER
 圖紙編號
 SHEET 4 OF 12

60670882/A34/FIGURE 5.1D

This drawing has been prepared for the use of AECOM's client. It may not be used, modified, reproduced or relied upon by third parties, except as agreed by AECOM or as required by law. AECOM accepts no responsibility, and disclaims any liability whatsoever, to any party that uses or relies on this drawing without AECOM's express written consent. All measurements must be obtained from the stated dimensions.

Plot File by: haiquan.zhao 11/04/2023
 PATH: P:\PROJECTS\60670882\DRAWING\REPORT\A34\A34_555.dgn