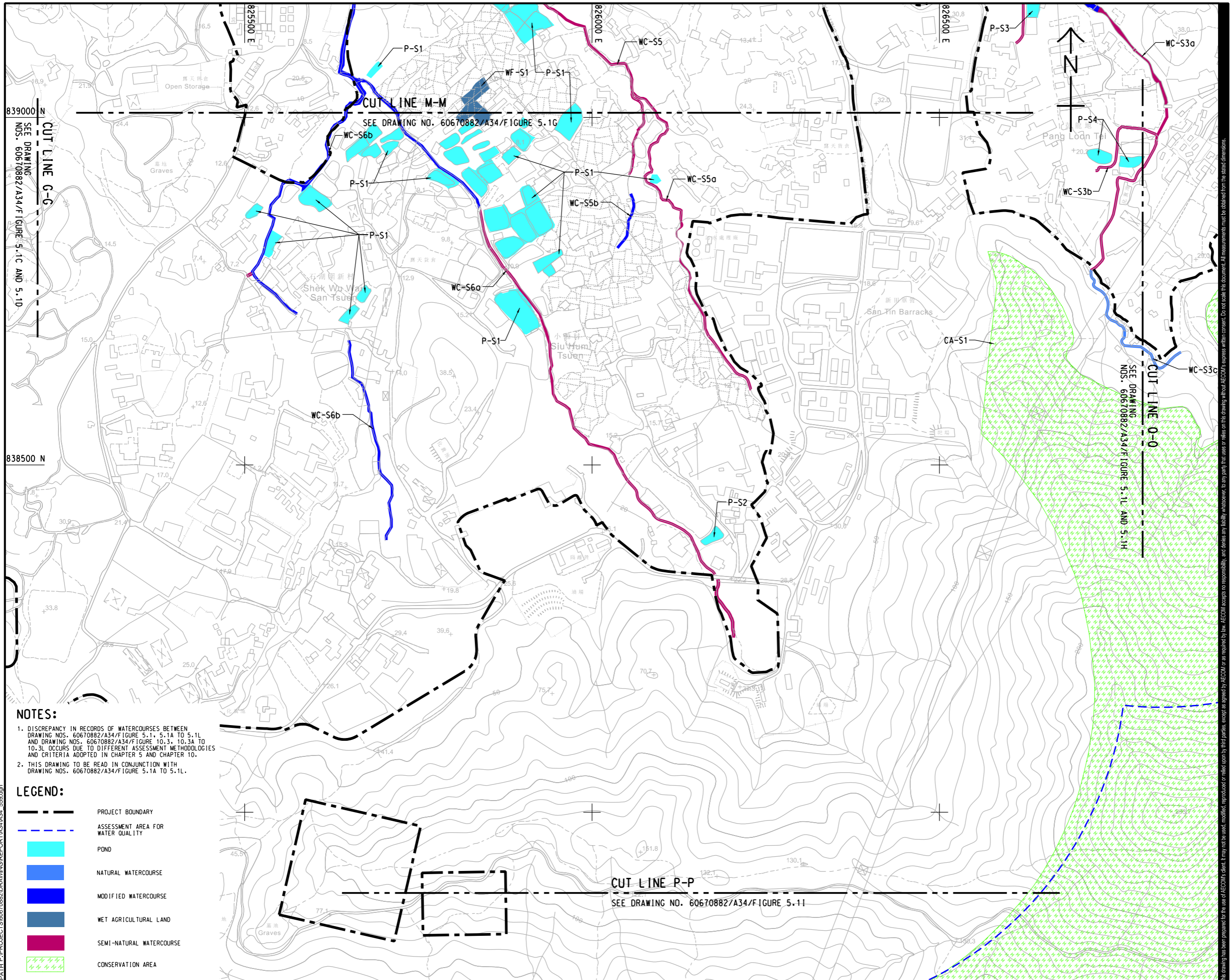


ISO A1 594mm x 841mm  
Approved:  
Checked:  
Designer:  
Project Management Initials:  
Plot File by: haiquan.zhao 11/14/2023  
PATH P:\PROJECTS\60670882\DRAWING\REPORT\A34\A34\_558.dgn



**NOTES:**

- DISCREPANCY IN RECORDS OF WATERCOURSES BETWEEN DRAWING NOS. 60670882/A34/Figure 5.1A TO 5.1L AND DRAWING NOS. 60670882/A34/Figure 10.3, 10.3A TO 10.3L OCCURS DUE TO DIFFERENT ASSESSMENT METHODOLOGIES AND CRITERIA ADOPTED IN CHAPTER 5 AND CHAPTER 10.
- THIS DRAWING TO BE READ IN CONJUNCTION WITH DRAWING NOS. 60670882/A34/Figure 5.1A TO 5.1L.

- LEGEND:**
- PROJECT BOUNDARY
  - ASSESSMENT AREA FOR WATER QUALITY
  - POND
  - NATURAL WATERCOURSE
  - MODIFIED WATERCOURSE
  - WET AGRICULTURAL LAND
  - SEMI-NATURAL WATERCOURSE
  - CONSERVATION AREA



**PROJECT**  
 項目  
 FIRST PHASE DEVELOPMENT OF THE NEW TERRITORIES NORTH - SAN TIN / LOK MA CHAU DEVELOPMENT NODE - INVESTIGATION

**CLIENT**  
 業主  
 土木工程拓展署  
 Civil Engineering and Development Department  
 規劃署  
 Planning Department

**CONSULTANT**  
 工程顧問公司  
 AECOM Asia Company Ltd.  
 www.aecom.com

**SUB-CONSULTANTS**  
 分判工程顧問公司

**ISSUE/REVISION**  
 修訂

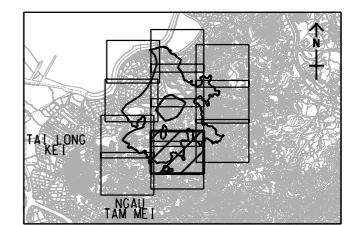
IR	DATE	DESCRIPTION	CHK.

**STATUS**  
 階段

**SCALE**  
 比例  
 A3 1:5000

**DIMENSION UNIT**  
 尺寸單位  
 METRES

**KEY PLAN** A3 1:250000



**PROJECT NO.**  
 項目編號  
 60670882

**AGREEMENT NO.**  
 協議編號  
 CE 20/2021

**SHEET TITLE**  
 圖紙名稱  
 LOCATIONS OF WATER SENSITIVE RECEIVERS

**SHEET NUMBER**  
 圖紙編號  
 60670882/A34/FIGURE 5.1H

SHEET 8 OF 12

This drawing has been prepared for the use of AECOM's client. It may not be used, modified, reproduced or relied upon by third parties, except as agreed by AECOM or as required by law. AECOM accepts no responsibility, and denies any liability, whatsoever, to any party that uses or relies on this drawing without AECOM's express written consent. All measurements must be obtained from the stated dimensions.