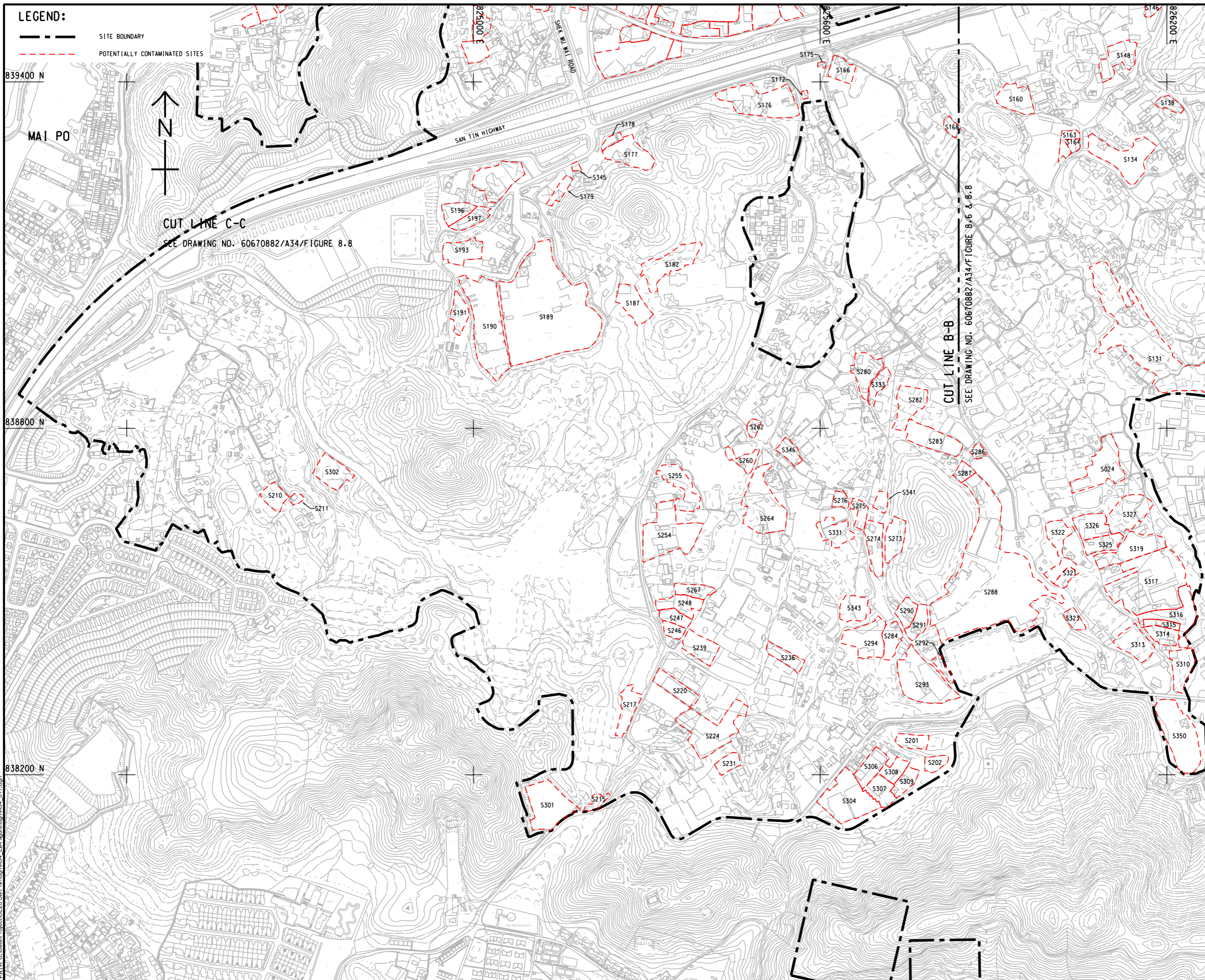


PM File by: Chow R 10/27/2023  
 Path: C:\Data\Project\CE20 San Tin\Map\A34\_EIA\_figure.dgn\A34\_817.dgn  
 Project Management Initials: Designer: Checked: Approved: ISO A1 594mm x 841mm



**LEGEND:**  
 - - - - - SITE BOUNDARY  
 - - - - - POTENTIALLY CONTAMINATED SITES

CUT LINE C-C  
 SEE DRAWING NO. 60670882/A34/FIGURE 8.8

CUT LINE B-B  
 SEE DRAWING NO. 60670882/A34/FIGURE 8.6 & 8.8

**AECOM**

**PROJECT**  
 項目  
 FIRST PHASE DEVELOPMENT OF THE NEW TERRITORIES NORTH – SAN TIN / LOK MA CHAU DEVELOPMENT NODE – INVESTIGATION

**CLIENT**  
 業主  
 土木工程拓展署  
 Civil Engineering and Development Department  
 規劃署  
 Planning Department

**CONSULTANT**  
 顧問公司  
 AECOM Asia Company Ltd.  
 www.aecom.com

**SUB-CONSULTANTS**  
 分判工程師/顧問公司

**ISSUE/REVISION**  
 修訂

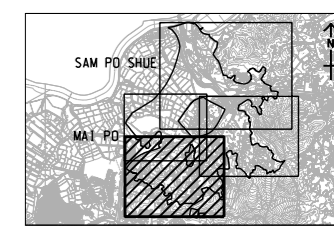
I/R	DATE	DESCRIPTION	CHK.

**STATUS**  
 階段

**SCALE**  
 比例  
 A3 1 : 6000

**DIMENSION UNIT**  
 尺寸單位  
 METRES

**KEY PLAN** A3 1 : 160000  
 索引圖



**PROJECT NO.**  
 項目編號  
 60670882

**AGREEMENT NO.**  
 協議編號  
 CE 20/2021

**SHEET TITLE**  
 圖紙名稱  
 LOCATION PLAN OF POTENTIALLY CONTAMINATED SITES (SOUTHERN PORTION)

**SHEET NUMBER**  
 圖紙編號  
 60670882/A34/FIGURE 8.7

This drawing has been prepared for the use of AECOM's client. It may not be used, modified, reproduced or published in any form without the prior written consent of AECOM. All measurements must be obtained from the status dimensions.