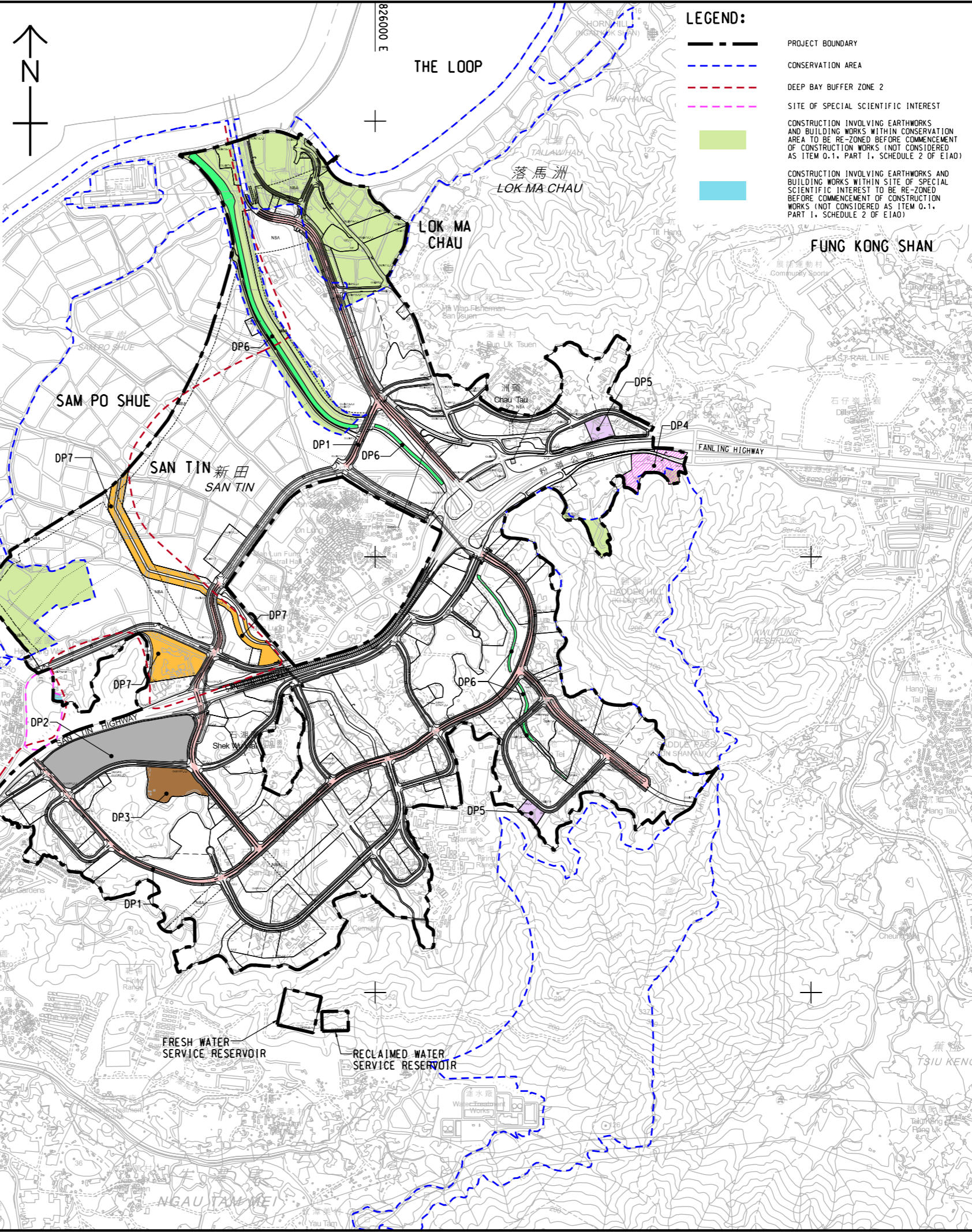


ISO A1 594mm x 841mm
 Approved:
 Checked:
 Designer:
 Project Management Initials:
 Photo File by: vicky.xia1
 PATH: P:\PROJECTS\60670882\DRAWING\REPORT\A36\A36_703.dwg
 12/11/2023

DESIGNATED PROJECT REFERENCE

DESIGNATED PROJECT REFERENCE NOS.	SCHEDULE 2 DESIGNATED PROJECT	WORK COMPONENT / REFERENCE IN REVISED ROOP
DP1 ¹	PART 1, A.1 A CARRIAGEWAY FOR MOTOR VEHICLES THAT IS AN EXPRESSWAY, TRUNK ROAD, PRIMARY DISTRIBUTOR ROAD OR DISTRICT DISTRIBUTOR ROAD	CONSTRUCTION AND OPERATION OF PRIMARY DISTRIBUTOR ROAD P1, DISTRICT DISTRIBUTOR ROAD D1, D2, D3, D4, D5 AND D6
DP2 ¹	PART 1, F.1 SEWAGE TREATMENT WORKS WITH AN INSTALLED CAPACITY OF MORE THAN 15,000 M ³ PER DAY	CONSTRUCTION AND OPERATION OF STLMC EFFLUENT POLISHING PLANT WITH CO-DIGESTION FUNCTION
	PART 1, F.2 SEWAGE TREATMENT WORKS WITH AN INSTALLED CAPACITY OF MORE THAN 5,000 M ³ PER DAY; AND A BOUNDARY OF WHICH IS LESS THAN 200 M FROM THE NEAREST BOUNDARY OF AN EXISTING OR PLANNED RESIDENTIAL AREA AND EDUCATIONAL INSTITUTION	
DP3 ¹	PART 1, F.4 A FACILITY FOR GENERATING, FROM SEWAGE EFFLUENT TREATED BY A SEWAGE TREATMENT PLANT, RECLAIMED WATER FOR USE BY THE GENERAL PUBLIC	CONSTRUCTION AND OPERATION OF STLMC WATER RECLAMATION PLANT
DP4 ²	PART 1, G.2 A REFUSE TRANSFER STATION	CONSTRUCTION AND OPERATION OF A REFUSE TRANSFER STATION
DP5 ²	PART 1, H.1 A 400KV ELECTRICITY SUBSTATION AND TRANSMISSION LINE	
DP6 ¹	PART 1, I.1 A DRAINAGE CHANNEL OR RIVER TRAINING AND DIVERSION WORKS LOCATED LESS THAN 300 M FROM THE NEAREST BOUNDARY OF AN EXISTING OR PLANNED CONSERVATION AREA.	REVITALISATION WORKS (I.E. RIVER TRAINING, DIVERSION WORKS) FOR SAN TIN EASTERN MAIN DRAINAGE CHANNEL ARE LOCATED LESS THAN 300M FROM CONSERVATION AREA
DP7 ¹	PART 1, P.1 A RESIDENTIAL OR RECREATIONAL DEVELOPMENT, OTHER THAN NEW TERRITORIES EXEMPTED HOUSES, WITHIN DEEP BAY BUFFER ZONE 2	RECREATIONAL DEVELOPMENT FOR PROPOSED SITES 0.1.1, 0.1.2, AND 0.1.3 (AS OPEN SPACE) ENCRROACH INTO DEEP BAY BUFFER ZONE 2

NOTE: 1 SUBJECT TO AN ENVIRONMENTAL PERMIT APPLICATION FOR BOTH CONSTRUCTION AND OPERATION PHASES OF THE DP UNDER THIS EIA STUDY.
 2 SUBJECT TO SEPARATE EIA STUDY, AS REQUIRED.
 3 THE FUTURE ZONINGS OF THE CONCERNED 'CONSERVATION AREA' ARE SUBJECT TO CHANGE DUE TO LAND USE PROPOSALS AS REFLECTED IN THE REVISED ROOP.



AECOM

PROJECT
 項目
 FIRST PHASE DEVELOPMENT OF THE NEW TERRITORIES NORTH – SAN TIN / LOK MA CHAU DEVELOPMENT NODE – INVESTIGATION

CLIENT
 業主
 CEDD 土木工程拓展署
 Civil Engineering and Development Department
 規劃署
 Planning Department

CONSULTANT
 顧問公司
 AECOM Asia Company Ltd.
 www.aecom.com

SUB-CONSULTANTS
 分判工程師/顧問公司

ISSUE/REVISION
 修訂

IR	DATE	DESCRIPTION	CHK.

STATUS
 階段

SCALE
 比例
 A3 1 : 20000

DIMENSION UNIT
 尺寸單位
 METRES

KEY PLAN
 索引圖

PROJECT NO.
 項目編號
 60670882

AGREEMENT NO.
 協議編號
 CE 20/2021

SHEET TITLE
 圖紙名稱
 LOCATION OF DESIGNATED PROJECTS

SHEET NUMBER
 圖紙編號
 60670882/A36/FIGURE 1.3

This drawing has been prepared for the use of AECOM's client. It may not be used, modified, reproduced or relied upon by third parties, except as agreed by AECOM. AECOM accepts no responsibility, and disclaims any liability, whatsoever, for any part, that uses or relies on this drawing without AECOM's express written consent. Do not scale this document. All measurements must be obtained from the stated dimensions.