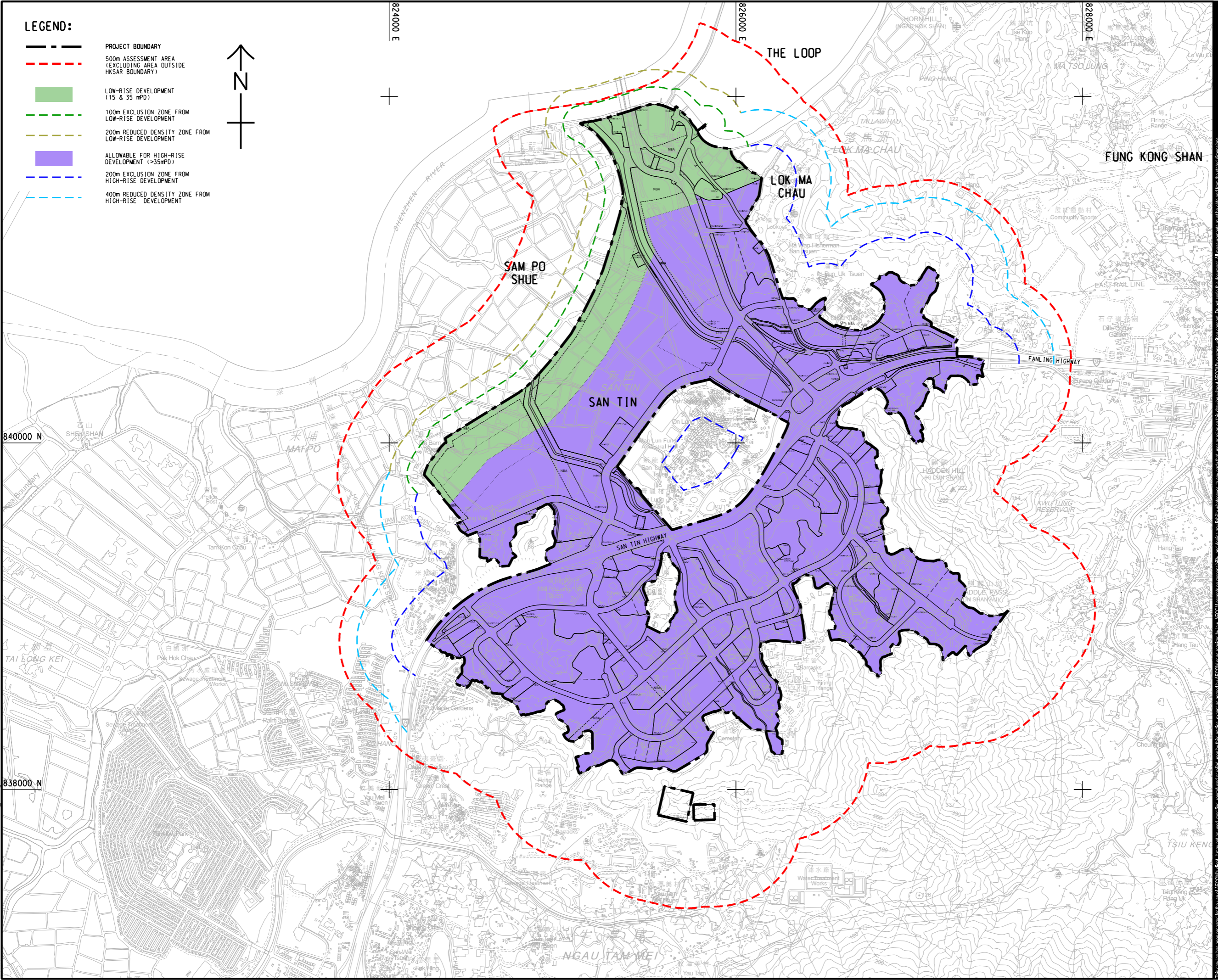


ISO A1 594mm x 841mm  
 Approved:  
 Checked:  
 Designer:  
 Project Management Initials:

**LEGEND:**

- PROJECT BOUNDARY
- 500m ASSESSMENT AREA (EXCLUDING AREA OUTSIDE HKSAR BOUNDARY)
- LOW-RISE DEVELOPMENT (15 & 35 mPD)
- 100m EXCLUSION ZONE FROM LOW-RISE DEVELOPMENT
- 200m REDUCED DENSITY ZONE FROM LOW-RISE DEVELOPMENT
- ALLOWABLE FOR HIGH-RISE DEVELOPMENT (>35mPD)
- 200m EXCLUSION ZONE FROM HIGH-RISE DEVELOPMENT
- 400m REDUCED DENSITY ZONE FROM HIGH-RISE DEVELOPMENT



**PROJECT**  
 項目  
 FIRST PHASE DEVELOPMENT OF THE NEW TERRITORIES NORTH – SAN TIN / LOK MA CHAU DEVELOPMENT NODE – INVESTIGATION

**CLIENT**  
 業主  
 土木工程拓展署  
 Civil Engineering and Development Department  
 規劃署  
 Planning Department

**CONSULTANT**  
 顧問公司  
 AECOM Asia Company Ltd.  
 www.aecom.com

**SUB-CONSULTANTS**  
 分判工程師/顧問公司

**ISSUE/REVISION**  
 修訂

I/R	DATE	DESCRIPTION	CHK.

**STATUS**  
 階段

**SCALE**                      **DIMENSION UNIT**  
 比例                              尺寸單位  
 A3 1 : 20000                      METRES

**KEY PLAN**  
 索引圖

**PROJECT NO.**                      **AGREEMENT NO.**  
 項目編號                              協議編號  
 60670882                              CE 20/2021

**SHEET TITLE**  
 圖紙名稱  
 INDICATIVE LOCATION OF EZ, RDZ AND 500M FOR MONITORING OF CONSTRUCTION DISTURBANCE

**SHEET NUMBER**  
 圖紙編號  
 60670882/A36/FIGURE 9.6

This drawing has been prepared for the use of AECOM's client. It may not be used, modified, reproduced or relied upon by third parties, except as agreed by AECOM or as required by law. AECOM accepts no responsibility, and denies any liability, whatsoever, for any part, that less or relies on this drawing without AECOM's express written consent. All measurements must be obtained from the stated dimensions.

Plot File for: vicky.xia1  
 PATH: P:\PROJECTS\60670882\DRAWING\REPORT\A3\A34\_722.dgn