

Clean Shorelines Video Filming Competition

Factsheet

The work of the Inter-departmental Working Group on Clean Shorelines (the Working Group):

- Identify the sources of marine refuse
- Review existing measures to keep the shorelines clean
- Formulate strategic policies to prevent and reduce marine refuse
- Identify the priority areas that require attention and formulate other improvement measures
- Organize public engagement activities to promote public awareness of keeping the shorelines clean

Membership of the Working Group:

Agriculture, Fisheries and Conservation Department
Civil Engineering and Development Department
Drainage Services Department
Environmental Protection Department
Food and Environmental Hygiene Department
Lands Department
Leisure and Cultural Services Department
Marine Department

Clean Shorelines Campaign:

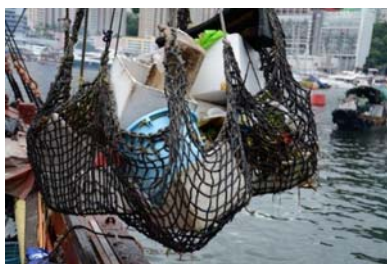
- Launched in May 2013 with the aim to raise public awareness on keeping the shorelines clean and to unite the efforts of various Government departments and community groups to conduct cleanup operations in the coastal areas;
- the theme of 2014 is “Protect our coast Leave no trace” aiming to emphasize the importance of personal actions in keeping the shorelines clean; these would include
 - using reusable items while spending time at the coast, and not using disposable items;
 - take away one’s rubbish, dispose properly or recycle;
- supported by a thematic website on clean shorelines (http://www.epd.gov.hk/epd/clean_shorelines), TV and radio announcements.

Amount of marine refuse collected by government departments:

Location (Responsible Department)/ Amount Collected (Tonnes)	2011	2012	2013
Within Hong Kong waters (Marine Department)	11,100	10,996	10,900
Gazetted beaches (Leisure and Cultural Services Department)	3,548	3,401	3,336
Marine Parks/Reserves (Agriculture, Fisheries and Conservation Department)	344	340	362
Nearshore/watercourses (Food and Environmental Hygiene Department)	238	263	307



Marine Park



Hong Kong Water



Gazetted Beach



Non-gazetted Beach

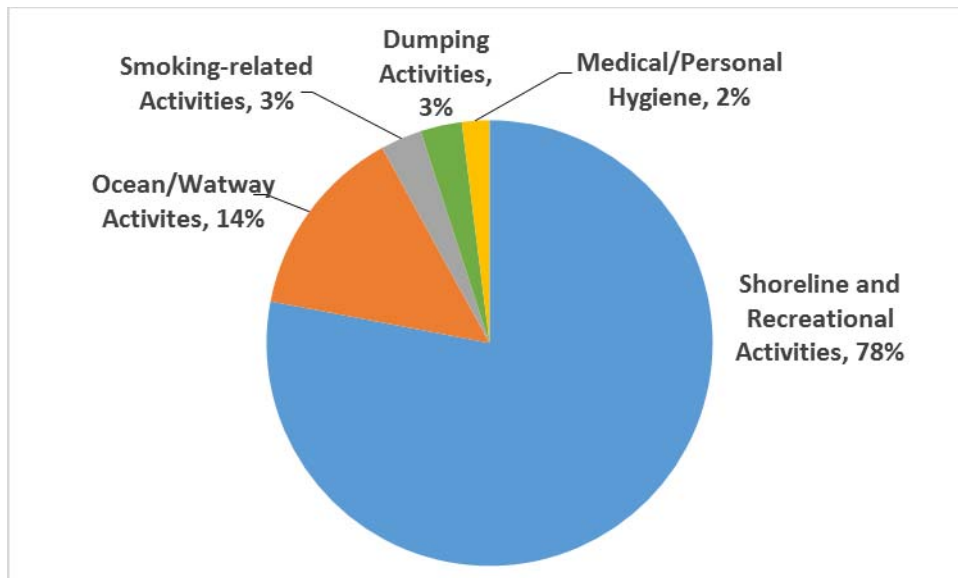
Top ten types of marine refuse:

Data from Refuse Characteristic Survey conducted by the EPD (from April 2013 to March 2014)

Weight of refuse collected (kg)	472
Amount of refuse collected by count	25266
Ranking (based on percentage of refuse by count)	
Plastic - Pieces	1 (23.7%)
Plastic - Food wrappers, Labels, Packets	2 (7.4%)
Foamed plastic fragments (> 5 cm)	3 (5.8%)
Foamed plastic fragments (2-5 cm)	4 (5.5%)
Foamed plastic fragments (< 2 cm)	5 (5.5%)
Plastic - Caps, Lids	6 (5.0%)
Plastic - Hard items	7 (4.8%)
Plastic - Cutlery (Spoons, Knives, Forks), Straws, Stirrers	8 (4.4%)
Plastic - Food containers, Cups, Plates	9 (3.7%)
Plastic - Beverage bottles < 2L	10 (3.1%)

Sources of marine refuse found at coastal areas by count:

Data from Refuse Characteristic Survey conducted by the Environmental Protection Department (EPD) (from April 2013 to March 2014)



Shoreline and Recreational Activities: Debris from beach-goers, sports/games, festivals, streets/storm drains, e.g. beverage cans/bottles, food wrappers, cutlery, toys, towels, hats

Ocean/Waterway Activities: Debris from recreational/commercial fishing and boat/vessel operations, e.g. lube oil bottles, fishing nets, buoys

Smoking-Related Activities: Debris of smoking-related materials and packaging, e.g. butts, filters

Dumping Activities: Improper disposal of construction material and household waste, e.g. paint tins, rubber tyres, bricks

Medical/Personal Hygiene: Debris of medical and sanitary items from beach-goers, sewers, storm drains, e.g. syringes, cotton buds, diapers

Marine refuse found on beaches and waterfront promenades after festivals:

Dragon Boat Festival



Mid-Autumn Festival



Ways to reduce marine refuse:

Do not use disposable items



Use reusable items for activities in coastal areas or at sea



Take your own rubbish away and recycle



Useful information links on marine refuse

Marine refuse statistics

http://www.epd.gov.hk/epd/clean_shorelines/statistics.html

Offence and penalty on marine littering

http://www.epd.gov.hk/epd/clean_shorelines/node/38.html

Government's measures to tackle marine refuse

http://www.epd.gov.hk/epd/clean_shorelines/node/39.html

Sharing by community groups on their cleanup operations

http://www.epd.gov.hk/epd/clean_shorelines/node/70.html