

B (809800,826000)



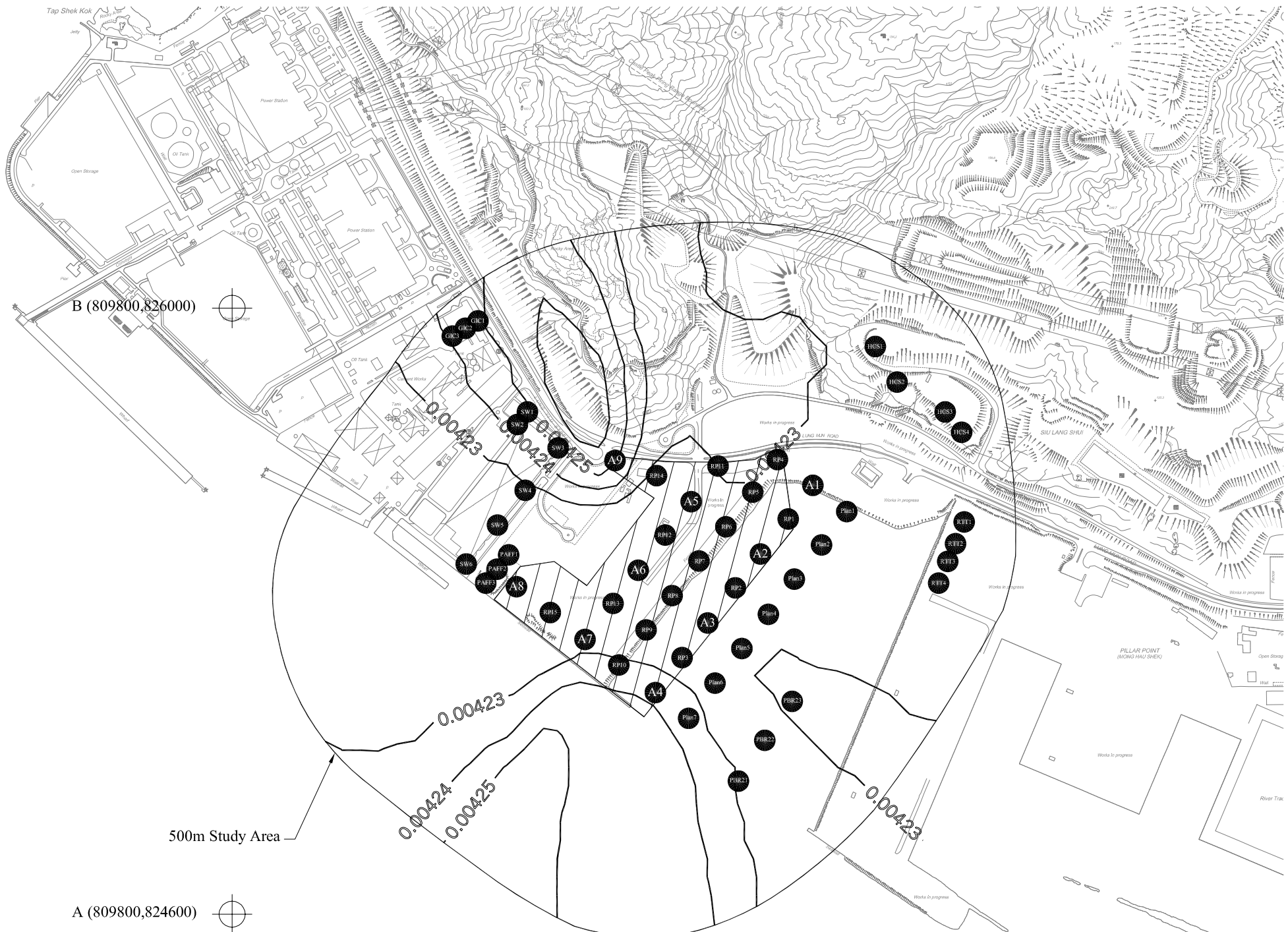
500m Study Area

A (809800,824600)



Scale: As shown

Figure 7-M1 Cumulative 1-year Cr6+ Concentration ($\mu\text{g}/\text{m}^3$) at 8.5mPD emitted from Source Location A4 (Mitigated Scenario 2)

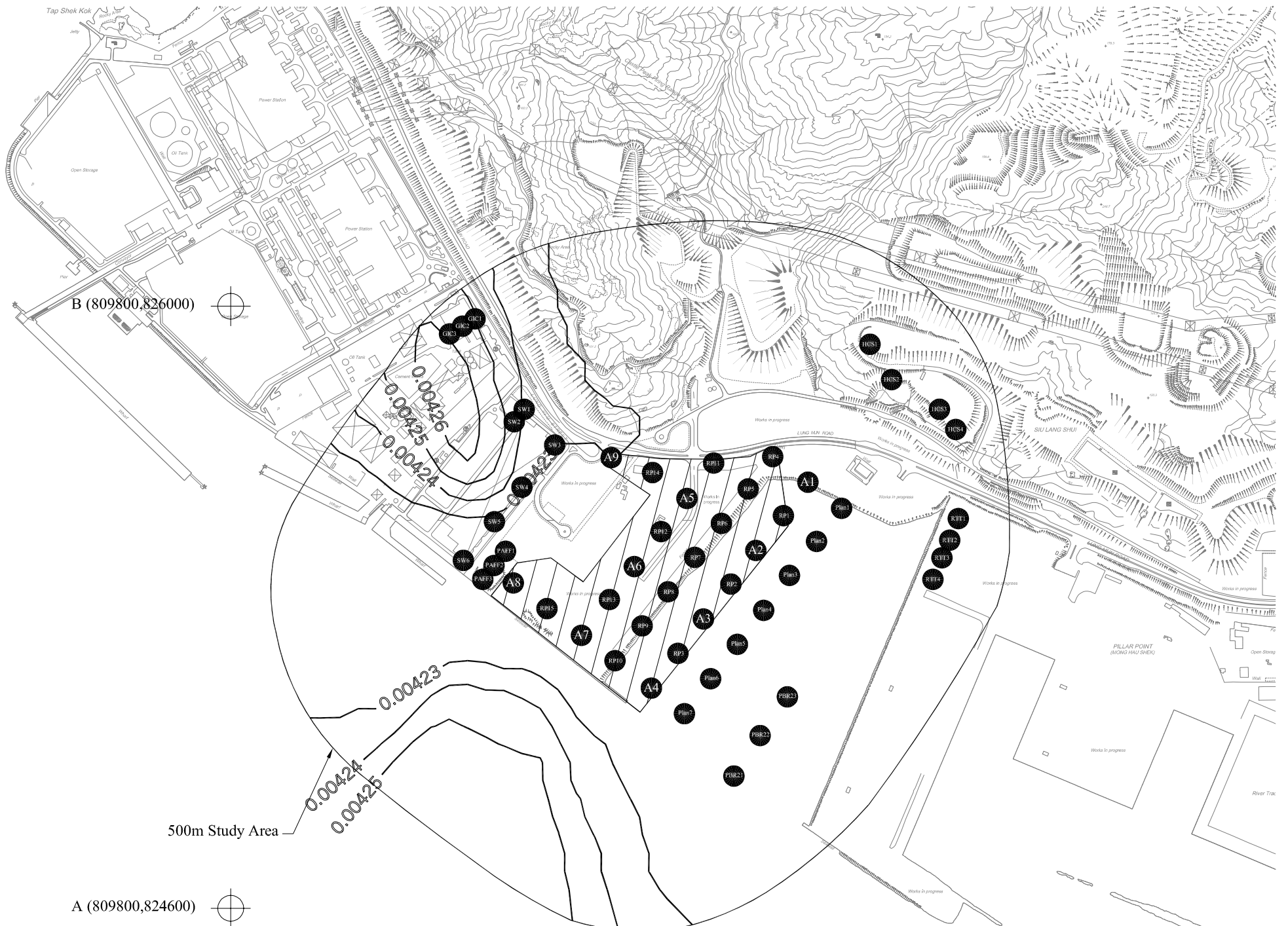


B (809800,826000)

500m Study Area

A (809800,824600)

Scale: As shown
Figure 7-M2 Cumulative 1-year Cr6+ Concentration ($\mu\text{g}/\text{m}^3$) at 8.5mPD emitted from Source Location A6 (Mitigated Scenario 2)



B (809800,826000)

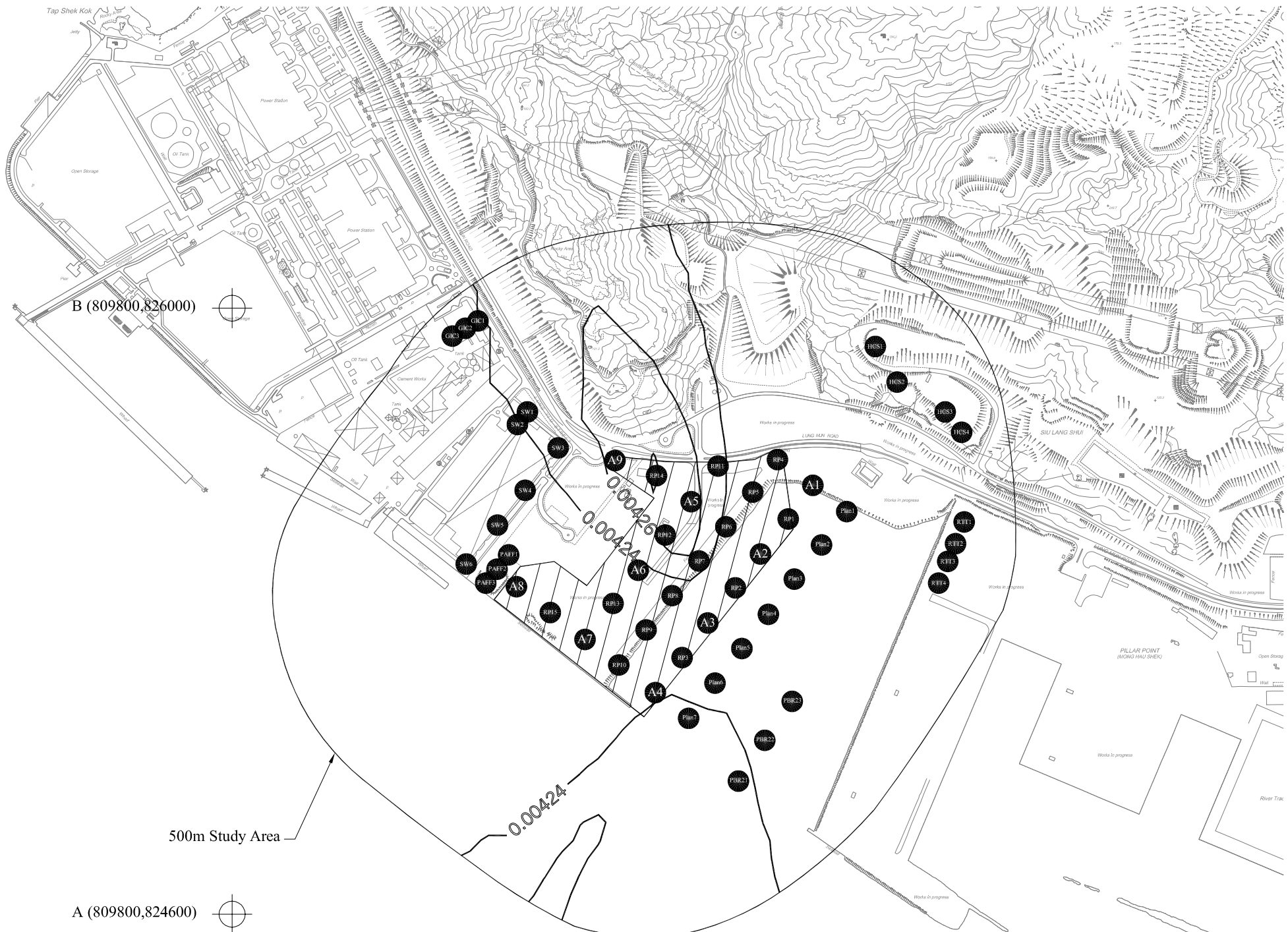


500m Study Area

A (809800,824600)



Scale: As shown
Figure 7-M3 Cumulative 1-year Cr6+ Concentration ($\mu\text{g}/\text{m}^3$) at 8.5mPD emitted from Source Location A8 (Mitigated Scenario 2)



B (809800,826000)



500m Study Area

A (809800,824600)



Scale: As shown
Figure 7-M4 Cumulative 1 Year Cr6+ Concentration ($\mu\text{g}/\text{m}^3$) at 22.5mPD emitted from Source Location A3 (Mitigated Scenario 2)



B (809800,826000)

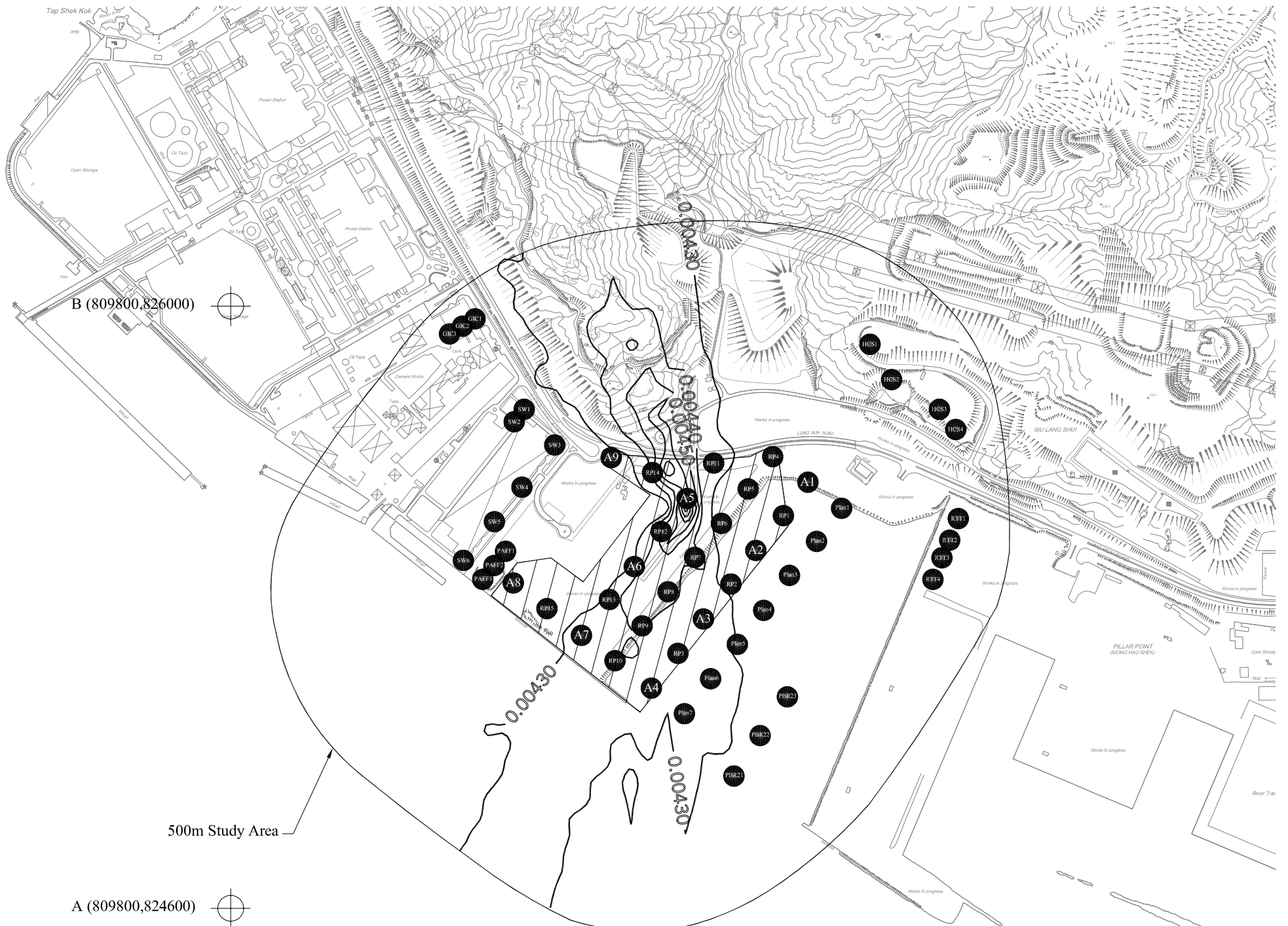


500m Study Area

A (809800,824600)



Scale: As shown
Figure 7-M5 Cumulative 1-year Cr6+ Concentration ($\mu\text{g}/\text{m}^3$) at 61.5mPD emitted from Source Location A2 (Mitigated Scenario 2)



B (809800,826000)



500m Study Area

A (809800,824600)



Scale: As shown
Figure 7-M6 Cumulative 1-year Cr6+ Concentration ($\mu\text{g}/\text{m}^3$) at 61.5mPD emitted from Source Location A5 (Mitigated Scenario 2)