

Table of Content

0.0	Terms and Definitions	2
1.0	General	4
1.1	Company Profile.....	4
1.2	Purpose of this Manual.....	4
1.3	Scope of EMS.....	4
2.0	Policy	5
3.0	Organisation	6
3.1	Organisation Chart.....	6
3.2	Responsibility.....	6
3.2.1	General Manager.....	6
3.2.2	Environmental Management Representative (EMR).....	7
3.2.3	Deputy Environmental Management Representative (DEMR).....	7
3.2.4	Environmental Management System Committee (EMS Committee).....	7
3.2.5	Management Review Committee.....	8
3.2.6	Project Manager.....	8
3.2.7	Technical Services Manager.....	8
3.2.8	Human Resource Manager.....	9
3.2.9	All Employees.....	9
4.0	Environmental Management System Requirements	9
4.1	Environmental Management System Documents.....	9
4.2	Environmental Policy.....	10
4.3	Planning.....	10
4.3.1	Environmental Aspects.....	10
4.3.2	Legal and Other Requirements.....	11
4.3.3	Objectives, Targets and Programme(s).....	11
4.4	Implementation and Operation.....	12
4.4.1	Resources, Roles, Responsibility and Authority.....	12
4.4.2	Competence, Training and Awareness.....	12
4.4.3	Communication.....	13
4.4.4	Documentation.....	13
4.4.5	Control of Document.....	14
4.4.6	Operational Control.....	14
4.4.7	Emergency Preparedness and Response.....	14
4.5	Checking.....	15
4.5.1	Monitoring and Measurement.....	15
4.5.2	Evaluation of Compliance.....	15
4.5.3	Nonconformity, Corrective Action and Preventive Action.....	15
4.5.4	Control of Records.....	16
4.5.5	Internal Audit.....	16
4.6	Management Review.....	16

Appendix A Cross Reference of ISO 14001 Requirements and Sections in the EMS Manual and Environmental Procedures.

Appendix B Controlled Document List

0.0 Terms and Definitions

Auditor	Person with the competence to conduct an audit
Continual improvement	Recurring process of enhancing the environmental management system in order to achieve improvements in overall environmental performance consistent with the organisation's environmental policy.
Corrective action	Action to eliminate the cause of a detected nonconformity.
Document	Information and its supporting media
Environment	Surroundings in which an organisation operates, including air, water, land, natural resources, flora, fauna, humans, and their interrelation.
Environmental aspect (EA)	Elements of an organisation's activities or products or services that can interact with the environment.
Environmental impact	Any change to the environment, whether adverse or beneficial, wholly or partially resulting from an organisation's environmental aspects.
Environmental management system (EMS)	Part of an organisation's management system used to develop and implement its environmental policy and manage its environmental aspects.
Environmental objective	Overall environmental goal, consistent with the environmental policy, which an organisation sets itself to achieve.
Environmental performance	Measurable results of an organisation's management of its environmental aspects.
Environmental policy	Overall intentions and directions of an organisation related to its environmental performance as formally expressed by top management.
Environmental target	Detailed performance requirement applicable to the organisation or parts thereof, that arises from the environmental objectives and that needs to be set and met in order to achieve those objectives.
Interested party	Person or group concerned with or affected by the environmental performance of an organisation.
Internal audit	Systematic, independent and documented process for obtaining audit evidence and evaluating it objectively to determine the extent to which the environmental management system audit criteria set by the organization are fulfilled.
Nonconformity	Non-fulfilment of a requirement.
Organisation	Wan Bao Construction Limited (WBC)
Preventive action	Action to eliminate the cause of a potential nonconformity.
Prevention of pollution	Use of processes, practices, techniques, materials, products, services or energy to avoid, reduce or control (separately or in combination) the creation, emission or discharge of any type of pollutants or waste, in order to reduce adverse environmental impacts.

Procedure	Specified way to carry out an activity or a process
Record	Document stating results achieved or providing evidence of activities performed.

1.0 General**1.1 Company Profile**

The business activities undertaken by Wan Bao Construction Limited (hereafter name as WBC) are the design and construction of buildings and civil engineering works. WBC was established in Hong Kong in the 1990's and despite being a Small and Medium Enterprise (SME), we have provided services for some major building and infrastructure projects for the Hong Kong Government, such as airport, government offices and Tai Lam Tunnel, etc.

We specialise in public sector building and civil engineering works, residential buildings, government offices, hotels and public facilities.

1.2 Purpose of this Manual

This Manual defines the Environmental Management System (EMS) of WBC's activities and contains:

- a) The Environmental Policy;
- b) Statements of responsibility and authority;
- c) An overview of the company's environmental procedures and controls;
- d) The identification of the resources and training allocated to management, performance of work and verification activities including internal audit;
- e) The appointment of the Environmental Management Representative (EMR); and
- f) The arrangement for periodic management reviews.

The purpose of this Manual is to demonstrate that this EMS meets all ISO14001:2004 requirements and provide guidance and direction for the implementation and operation of the EMS to all personnel including all relevant documents.

1.3 Scope of EMS

The scope of the EMS applies to the Design and Construction of Buildings and Civil Engineering Projects related to all operations by WBC. Also the locations and areas to be covered in the EMS.

2.0 Policy***Wan Bao Construction Limited***

Wan Bao Construction Limited (WBC) undertakes the design, construction, operation, maintenance and project management of building and civil engineering works in both public and private sectors.

Protecting the environment is the responsibility of everyone in the organization. WBC is committed to sustainable construction and minimise any adverse impact on the environment resulting from our business activities.

We are committed to delivering services with minimal impact to the environment through the following principles: -

- ★ Focus on prevention of pollution, waste minimization and resource conservation as critical considerations within our core management processes.
- ★ Compliance with applicable legal requirements and other requirements to which the Company subscribes which relate to its environmental aspects.
- ★ Regular performance reviews to ensure that environmental objectives and the requirements of Interested Parties are met.
- ★ Provision of staff training to ensure understanding, implementation and development of these principles throughout our business.
- ★ Continual improvement

All staff will follow the requirements of the Environmental Management System in the performance of their tasks and will ensure this policy is supported and maintained. This policy will be communicated to our customers, suppliers, and subcontractors. It will also be made available to the public whenever requested.

Signed :

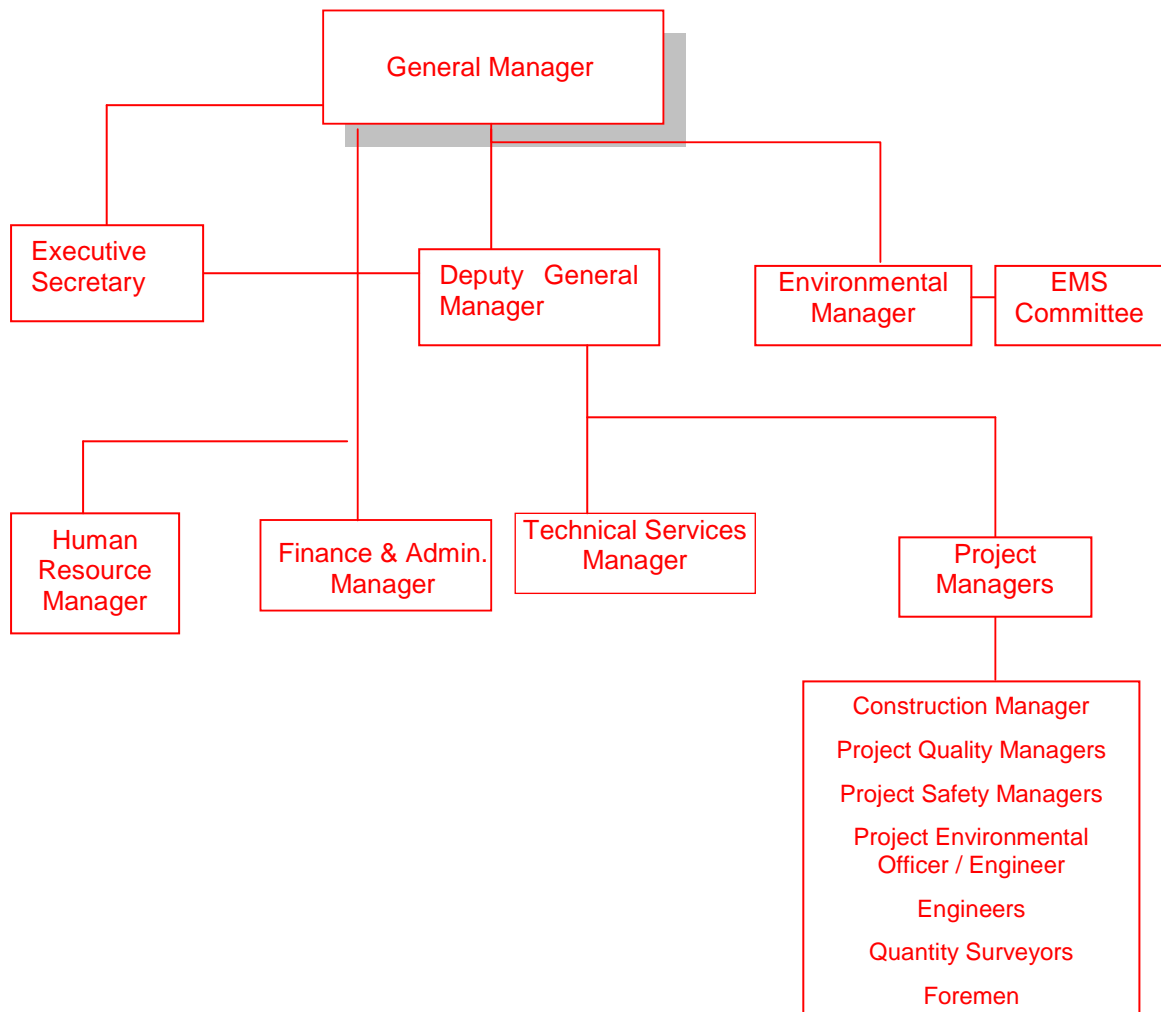


Date: 1-1-2006

K.T. Wong
General Manager

3.0 Organisation

3.1 Organisation Chart



3.2 Responsibility

3.2.1 General Manager

The **General Manager** is committed to developing and implementing the Environmental Management System. Resources requirements are reviewed to ensure that adequate resources are provided to plan, do, check and act for continually improving its effectiveness.

General Manager is responsible for:

- a) endorsing the environmental policy;
- b) ensuring appropriate resource allocation to enable the effective operation and continual improvement of the EMS.

3.2.2 Environmental Management Representative (EMR)

The **Environmental Manager** is the appointed EMR and has the responsibility and authority for:

- a) ensuring that EMS requirements are established, implemented and maintained in accordance with the ISO 14001 standard, including the following tasks;
 - to control and issue all EMS documentation;
 - to ensure the promotion of awareness of customer requirement and environmental awareness throughout WBC;
 - to receive staff suggestions for improvements or additions to the EMS and taking the necessary action to implement them where they are beneficial;
 - to keep staff informed of developments in the EMS.
- b) ensuring that sufficient resources are allocated for the proper implementation of the environmental policy and the EMS;
- c) regularly reviewing the policy and the effectiveness of the EMS, and ensuring that the necessary changes are made.

EMR is also the Chairman of the EMS Committee and has the responsibility and authority for :

- a) leading the EMS Committee to establish and implement the EMS according to ISO 14001 standard, and monitoring the performance of the EMS;
- b) coordinating internal EMS audits to ensure the EMS has been properly implemented and maintained;
- c) handling and investigating nonconformity and ensuring corrective and preventive action has been taken to mitigate any impacts caused;
- d) reporting on the performance of the EMS to the top management for review and as a basis for improvement of the EMS.

The EMR, the Deputy Environmental Management Representative (DEMR), the EMS Committee and **General Manager** shall undertake the EMS management review **annually** to ensure top management commitment and integration of the EMS with business strategies for its implementation and continual improvement.

3.2.3 Deputy Environmental Management Representative (DEMR)

The **Finance & Administration Manager** is the appointed DEMR and has the responsibility and authority for:

- a) assisting the EMR to ensure the EMS is effectively implemented and maintained in accordance with ISO 14001 standard;
- b) assuming the responsibility and action of the EMR when the EMR is unavailable.

3.2.4 Environmental Management System Committee (EMS Committee)

This committee is responsible for:

- a) the establishment and implementation of the EMS;
- b) the establishment and review of objectives, targets, and programmes;
- c) ensuring the effective implementation of environmentally-related operational controls and programmes;
- d) the internal communication of environmental matters between management and

- employees; and promoting environmental awareness among company staff;
- e) the review of complaint records, nonconformity, corrective action and preventive action reports and the adoption of preventive actions as necessary;
 - f) providing leadership in the pursuit of environmental issues;
 - g) any other EMS activities that are assigned by the EMR;
 - h) holding regular meeting (every **3 months**).

3.2.5 Management Review Committee

The Committee systematically examines the EMS to ensure the suitability, adequacy and effectiveness of the EMS. The Committee comprises of the **General Manager**, EMR, DEMR and the EMS Committee.

3.2.6 Project Manager

Project Manager is responsible to plan, organize, co-ordinate and control individual project activities, the responsibilities related to EMS include:

- a) assisting the **General Manager in the pre-contract review**;
- b) reviewing the project and formulates the detailed contract program;
- c) implementing contracts through the co-ordination and instruction of site and office based staff;
- d) resolving problems encountered during the contract (e.g. any environmental issue) and refer to the **General Manager** if necessary;
- e) liaising with all other managers in order that the contract can be completed in accordance with the specified requirements and within the program;
- f) to be accountable for the **Technical Services and environmental management**;
- g) controlling overall cost of the projects;
- h) to foster good client relationships;
- i) promoting and develop the company image at all times;
- j) to keep up to date with all new business related developments, new statutory requirements and implements them accordingly.
- k) to evaluate the performance of the suppliers and sub-contractors.
- l) to handle client complaints (e.g. any environmental issue).

3.2.7 Technical Services Manager

Reporting to the **General Manager** or delegated **Deputy General Manager**, **Technical Services Manager** is responsible for the proper estimating of the tender and project planning in accordance with policy and directives given by **General Manager** or delegated **Deputy General Manager**, maximizing profit and making the most efficient use of resources under his control.

- a) to advise and make recommendations on technical engineering policy relative to the efficiency of the company.
- b) to provide technical advice and proposals to support projects.
- c) to carry out tender estimation.
- d) to ensure adequate resources are made available for tendering.
- e) to co-ordinate the estimating and planning works with Joint-Venture partners(as

appropriate)

f) to adjudicate the prices of suppliers and subcontractors in each tender.

3.2.8 Human Resource Manager

The Human Resource Manager shall consolidate the training needs and prepare an annual training plan for all employees. The HRM shall also arrange or coordinate training and keep training records accordingly.

3.2.9 All Employees

All employees are responsible for:

- a) Working in accordance with the documented environmental procedures and instructions, and specific responsibilities are defined in individual procedures and instructions;
- b) Reporting problems or deviations associated with environmental issues and the EMS to the EMS Committee.

4.0 Environmental Management System Requirements

The EMS of WBC is developed to manage significant environmental aspects so as to limit their impacts on the environment. The EMS is established in accordance with ISO 14001:2004 and is described in this section. Procedures for each component is given in the relevant Environmental Procedures (EPs) listed in Appendix A.

4.1 Environmental Management System Documents

The purposes of these EMS documents are as follows:

Environmental Policy	Describes the intention and principles to be adopted in relation to environmental performance, including but not limited to legal compliance, continual improvements and pollution prevention.
Environmental Management System Manual (EMS Manual)	Describes the environmental management system and outlines how the requirements of the International Standard (ISO 14001) are achieved. A cross-reference of the ISO 14001 clauses to the sections of this Manual is listed in Appendix A.
Objective(s) *	The overall environmental goals that WBC set to achieve.
Target(s) *	The set of measurable performance requirements that WBC establishes to achieve the objectives.
Programme(s) *	The programme and schedule which WBC implements to achieve the objectives and targets.
Environmental Procedures (EPs)	Define the roles, responsibilities, and actions to be taken to ensure that activities are performed and the EMS implemented in accordance with the environmental policy and the requirements of ISO 14001. A cross-reference of the ISO 14001 clauses to the EPs is listed in Appendix A.

Register of Environmental Aspects	Compiles the environmental aspects that are derived from the activities and services of WBC. The register also denotes the significance of the environmental aspects and the respective operational controls for significant environmental aspects.
Register of Legal and Other requirements	Compiles the legal and other requirements, which include legislation, codes of practice, regulatory and non-regulatory guidelines that are applicable to WBC.
Environmental Instructions (EIs)	Describe which and how activities should be performed to manage significant environmental aspects and to achieve the EMS ISO 14001 requirements.
Environmental Forms/Records	Record information for the audit trail and the assessment of environmental conditions and performance.

* Objectives and Targets, and associated Programmes are provided as a single document.

4.2 Environmental Policy

(ISO 14001 Standard Clause 4.2)

The environmental policy of WBC is included in Section 2 of this document. It outlines the environmental commitments of WBC with respect to its operations, activities, and overall environmental performance. During the development of this policy, the appropriateness to the nature, scale and environmental impacts of WBC's activities, products and services has been considered. The policy is endorsed by the General Manager and the policy shall be reviewed during the management review meeting.

The policy shall stipulate the commitments of WBC to continually improve its environmental management and prevention of pollution. WBC is also committed to comply with applicable legal requirements and other requirements to which WBC subscribes which relate to its environmental aspects.

The environmental policy shall provide a framework for setting and reviewing objectives and targets, and must be maintained, implemented and communicated to all employees of WBC and its contractors.

This policy shall be available to the public.

4.3 Planning

WBC shall follow a "plan-do-check-act" process to facilitate continual environmental performance improvements. The planning process includes the identification and updating of WBC's Register of Environmental Aspects, and the Register of Legal and Other Requirements. Together with WBC's environmental policy, WBC's objectives and targets are established, and appropriate programmes are formulated to achieve the objectives and targets.

4.3.1 Environmental Aspects

(ISO 14001 Standard Clause 4.3.1)

The planning process commences with the identification and updating of environmental aspects. In order to evaluate the impacts of its activities to the

environment, WBC shall establish, implement and maintain a procedure to identify the environmental aspects of its activities, products or services that it can control and those it can influence taking into account planned or new developments, or new or modified activities, products and services. These aspects, inclusive of those arising from works carried out by contractors, are registered in the "Register of Environmental Aspects".

WBC shall ensure that all environmental aspects that may pose significant impacts to the environment are under control and prioritised for improvements.

WBC shall keep this information up-to-date.

Relevant procedure : EP-01 Identification of Environmental Aspects and Significance Evaluation

4.3.2 Legal and Other Requirements

(ISO 14001 Standard Clause 4.3.2)

WBC shall establish, implement and maintain a procedure to identify and maintain access to legal requirements that are relevant to the company, as well as other requirements that the company subscribes to which relates to the company's environmental aspects

WBC shall identify all relevant regulations, codes of practice and guidelines that are applicable to the environmental aspects of its activities, products and services, and record this information in the Register of Legal and Other Requirements.

WBC shall keep this information up-to-date.

Relevant procedure : EP-02 Review of Legal and Other Requirements

4.3.3 Objectives, Targets and Programme(s)

(ISO 14001 Standard Clause 4.3.3)

Based on the environmental policy and significant environmental aspects, environmental objectives and targets shall be established, implemented and maintained at each function and level within WBC. Programmes are established, implemented and maintained for achieving its objectives and targets.

When establishing and reviewing its objectives, WBC shall take into consideration the legal and other requirements, significant environmental aspects, technological options, financial/operational/business requirements, and views of interested parties, and ensure that the objectives and targets are consistent with the environmental policy, including commitment to pollution prevention, to compliance with applicable legal requirements and other requirements, and to continual improvement.

The programmes designate the responsibility for achieving objectives and targets at each function and level of the company, together with the means and time frame by which they are to be achieved.

The **General Manager** shall approve the objectives, targets and programmes proposed by the EMS Committee before implementation. The EMS Committee shall ensure that the objectives and targets are measurable if possible, and that the progress towards achieving the objectives and targets is continually monitored and reviewed.

The achievement of objectives, targets and programmes shall be reviewed by the EMS Committee **every 3 months**. The EMS Committee shall lead the EMS Committee in revising the objectives, targets and programmes as necessary.

WBC shall ensure that the programmes are amended as appropriate for new projects and new or modified activities, products or services in order to ensure that

environmental management applies to such projects and activities.

In the event that objectives and targets in the programmes are not met, the EMR shall revise the programme as necessary and maintain documented evidence / records for the actions taken to mitigate the problems.

The EMR shall also maintain obsolete objectives, targets and programmes as an EMS record for **three years**.

4.4 Implementation and Operation

The implementation of the EMS requires **WBC** to clearly define roles, responsibilities and authorities of key personnel, commit to staff training, maintain effective communication channels, adopt effective document and operational controls, and maintain sufficient awareness on emergency preparedness among the staff.

4.4.1 Resources, Roles, Responsibility and Authority

(ISO 14001 Standard Clause 4.4.1)

Top management of **WBC** shall commit to provide resources (including human resources and specialized skills, organizational infrastructure, technological and financial resources) essential to the implementation and control of the EMS. The roles, responsibilities and authorities of key personnel shall be defined, documented, and communicated in order to facilitate effective environmental management.

WBC has appointed the **Environmental Manager** as the Environmental Management Representative (EMR), and the **Finance & Administration Manager** as the Deputy Environmental Management Representative (DEMUR) for the implementation and maintenance of the EMS. Their EMS responsibilities are described in section 3 of this manual.

4.4.2 Competence, Training and Awareness

(ISO 14001 Standard Clause 4.4.2)

WBC shall ensure all persons performing tasks for it or on its behalf, whose work may have a significant impact on the environment, are competent on the basis of appropriate education, training and/or experience, and shall retain associated records.

WBC will need to ensure that all people performing tasks for or on behalf of the organization, which includes contractors, sub-contractors, temporary staff and remote workers, have had an appropriate assessment for their potential to cause a significant environmental impact and the associated competence required.

WBC shall establish, implement and maintain procedures to identify the training needs associated with its environmental aspects and its EMS, and develop programmes to ensure awareness and competence, at each relevant function and level, by addressing:

- the roles and responsibilities in achieving conformity with the environmental management system;
- the importance of conformity with the environmental policy, the procedures and the requirements of the structured EMS;
- the significant environmental aspects and related actual or potential impacts associated from their work activities and the environmental benefits of improved personal performance;

- the potential consequences of departure from specified operating procedures;

Relevant procedure : EP-03 Training

4.4.3 Communication

(ISO 14001 Standard Clause 4.4.3)

For internal communication, the EMR shall ensure information regarding the EMS (such as the policy, objectives, targets and programmes) and environmental performance is readily available to employees on notice board, or is published on the intranet or newsletters.

Employees with enquiries / complaints regarding to the EMS and/or environmental issues of WBC shall inform their **Project Manager / Function / Departmental Manager**. The designated member of EMS Committee representing each division shall maintain a log for the relevant enquiries / complaints. Depending on the nature and scope of the enquiry / complaint, the EMR shall determine the corresponding action and maintain relevant records to demonstrate the response / corrective actions taken.

For external communication, the environmental policy is available at the office and **company web page**. All internal and external enquiries / complaints / communications shall be discussed and reviewed during the EMS Committee meeting and the decision shall be recorded on meeting minutes.

The EMS Committee may discuss and decide whether to communicate externally about its significant environmental aspects, the decision shall be documented in the meeting minutes. If the decision is to communicate, the EMS Committee shall establish and implement a method(s) for this external communication, e.g. publish environmental report.

Relevant procedure : EP-07 Enquiry / Complaint / Nonconformity Handling

4.4.4 Documentation

(ISO 14001 Standard Clause 4.4.4)

The Environmental Management System documentation encompasses four levels as described below :

The first level is the *Environmental Management System Manual* (this document) which includes WBC's environmental policy (specifying the principal objectives and environmental commitments of WBC), and a broad description of how WBC addresses the ISO 14001 requirements. The EMS Manual serves as an interface to interpret the relationship between WBC's EMS and the ISO 14001 Standard. An individual document of *Objectives, Targets and Programmes* is developed based on the company's environmental policy. It demonstrates the company's commitment on continual improvement in environmental performance.

The second level is the *Environmental Procedures (EPs)*, which include all procedures that WBC shall follow as specified in the ISO 14001 Standard. These procedures provide a detailed description of the EMS elements and define who should do what, how and when. Appendix A shows the relationship between various environmental procedures and the ISO 14001 Standard clauses. Register of Environmental Aspects, and Register of Legal and Other Requirements are derived from the procedures and act as the foundation of the EMS which the company subscribed to.

The third level is the *Environmental Instructions (EIs)*, which are operational control procedures or instructions, with defined responsibilities, to control the identified significant environmental aspects associated with WBC's operations and activities.

The fourth level is *Environmental Records* which arise from the implementation of the Environmental Management System Manual, Environmental Procedures and Environmental Instructions. Environmental Records include various checklists, reports and meeting records, etc, as defined in each Environmental Procedure and Environmental Instruction.

4.4.5 Control of Documents

(ISO 14001 Standard Clause 4.4.5)

The essences of EMS documentation controls are:

- they shall be reviewed, revised as necessary and approved for adequacy by authorized personnel;
- that current version of relevant documents shall be available at all locations where operations essential to the effective functioning of the environmental management system are performed;
- that documents of external origin determined by the organization to be necessary for the planning and operation of the EMS are identified and their distribution controlled;
- obsolete documents shall be promptly removed from all points of issue and use, or are otherwise assured against unintended use; and
- any obsolete documents retained for legal and / or knowledge preservation purposes shall be suitably identified.

WBC shall ensure that documentation is legible, dated (with dates of revision) and readily identifiable, maintained in an orderly manner, and retained for a specified period. WBC shall establish, implement and maintain a procedure for the creation and modification of the various types of documents and the respective responsibilities for such creation and modifications.

Relevant procedure : EP-04 Control of Documents

4.4.6 Operational Control

(ISO 14001 Standard Clause 4.4.6)

WBC shall establish, implement and maintain operation control procedures to manage its significant environmental aspects.

WBC shall ensure that all operations and activities, carried out by WBC's employee or contractors, that are associated with the significant aspects are properly controlled, and that appropriate operational control procedures, in terms of Environmental Procedures (EPs) and Environmental Instructions (EIs), are communicated to personnel whose tasks may result in significant environmental aspects. WBC shall influence its staff and contractors by communicating its environmental policy and other relevant EPs and/or EIs to them.

Relevant procedure : EI-01 to 08

4.4.7 Emergency Preparedness and Response

(ISO 14001 Standard Clause 4.4.7)

WBC shall establish, implement and maintain a procedure to identify potential emergency situations and responses to such situations in order to prevent and/or mitigate environmental impacts that may associate with them.

WBC shall review and revise its emergency preparedness and response procedures,

in particular after the occurrence of accidents or emergency situations.

WBC shall also periodically test the procedure and the preparedness where practicable.

Relevant procedure : EP-05 Environmental Emergency Preparedness and Response

4.5 Checking

While implementing the EMS, WBC shall monitor and measure the key characteristics of its operations and activities on a regular basis. These results shall be recorded together with nonconformity and the corrective action and preventive action. As part of the checking process, a periodic audit on the EMS shall provide a basis for management review.

4.5.1 Monitoring and Measurement

(ISO 14001 Standard Clause 4.5.1)

WBC shall establish, implement and maintain procedures to monitor and measure, on a regular basis, the key characteristics of its operations and activities that have significant impacts on the environment. This shall include procedures for tracking of performance, applicable operational controls and conformity with the company's objectives and targets, as well as the calibration and maintenance of monitoring equipment. The information of environmental monitoring shall be documenting.

Relevant procedure : EP-06 Environmental Monitoring and Evaluation of Compliance

4.5.2 Evaluation of Compliance

(ISO 14001 Standard Clause 4.5.2)

To meet the company's commitment to compliance, WBC shall regularly monitor and evaluate the compliance status of the applicable environmental legal requirements (section 4.5.2.1) and other requirements (section 4.5.2.2) that the company subscribes to. The records of the results of the periodic evaluations shall be retained.

Relevant procedure : EP-06 Environmental Monitoring and Evaluation of Compliance

4.5.3 Nonconformity, Corrective Action and Preventive Action

(ISO 14001 Standard Clause 4.5.3)

Continual improvement of the EMS can be achieved by identifying nonconformity, correcting nonconformity and preventing nonconformity from occurring again. Regarding non-conformity and its subsequent corrective / preventive action, WBC shall establish, implement and maintain a procedure which defines the responsibilities and authorities to:

- Handle and investigate nonconformity;
- Take action to mitigate the impacts caused;
- Initiate and complete corrective and preventive actions;
- Ensure that the corrective or preventive actions taken to eliminate the causes of actual and potential nonconformity are appropriate to the magnitude of problems and commensurate with the environmental impacts encountered;
- record the results of corrective and prevention actions taken;

- Review the effectiveness of corrective action and preventive action taken; and
- implement and record any changes in the documented procedures resulting from corrective and preventive action.

WBC shall also ensure that any necessary changes are made to environmental management documentation.

Relevant procedure : EP-07 Enquiry / Complaint / Nonconformity Handling

4.5.4 Controls of Records

(ISO 14001 Standard Clause 4.5.4)

Records shall be maintained to keep track of **WBC**'s environmental performance, to demonstrate conformity to the requirements of the EMS, legal compliance, and to maintain audit trails in accordance with the requirements of ISO 14001 Standard, and the results achieved.

WBC shall establish, implement and maintain a procedure to denote the identification, storage, protection, retrieval, retention and disposition of environmental records, to ensure that such records are legible, identifiable, and traceable to the activity, product or service involved, and that they are stored and maintained in such a way that they are readily retrievable and protected against damage, deterioration or loss. The retention period of each type of environmental records shall be specified.

Relevant procedure : EP-08 Control of Records

4.5.5 Internal Audit

(ISO 14001 Standard Clause 4.5.5)

WBC shall plan, establish, implement and maintain a programme and procedures to carry out periodic environmental management system audits to:

- a) determine whether or not the environmental management system:
 - conforms to planned arrangements for environmental management including the requirements of ISO 14001; and
 - has been properly implemented and maintained;
- b) provide audit results and information for management review for environmental improvement.

The audit programme, including the schedule, shall be based on the environmental importance of the activities concerned and results from previous audits. The audit procedures cover the audit criteria, scope, frequency and methods, as well as responsibilities and requirements for conducting audits and reporting results and retaining associated records.

WBC shall conduct EMS audits on a regular basis. Timely site environmental audits are required to ensure appropriate preventive actions being taken as planned, and corrective actions being carried out on a timely basis.

Relevant procedure : EP-09 Internal Audit

4.6 Management Review

(ISO 14001 Standard Clause 4.6)

The "plan-do-check-act" cycle shall require the top management of **WBC** to act and review the environmental management system periodically to ensure its suitability,

adequacy and effectiveness.

Before the Review, the EMR shall schedule for the management review and inform all the participants, and gather all relevant records/requirements (such as change in legal requirements) and prepare a summary report (if necessary) for discussion.

The **General Manager**, EMR and DEMR together with the EMS Committee shall take part in the **annual** management review. They shall assess the work done in the past year in environmental management and evaluate the existing EMS with respect to changes in legislation, concerns of interested parties, business activities, technology and product requirements, and lessons gained from previous experience, etc.

Topics to be discussed in the management review shall include but not be limited to:

- review of the environmental policy, objectives, targets, and programmes;
- review of legal compliance and compliance with other requirements (including contractor compliance on **WBC's** activities);
- environmental aspects of activities and their disclosure to public;
- findings of the internal audits;
- review of nonconformities and the status of corrective/preventive actions;
- areas for improvement with respect to environmental performance;
- adequacy of emergency preparedness and response;
- changing circumstances, including developments in legal and other requirements related to its environmental aspects,
- identify the need for modification of the existing EMS in light of the above items, and
- follow-up action from previous management reviews.

The review shall initiate a new “plan-do-check-act” cycle with improvements in **WBC's** environmental performance and further enhancement of the EMS.

Findings from the management review shall be recorded in the meeting minutes and the EMR shall retain it as an EMS record. Maintenance of the records shall be in accordance with EP-08.

Appendix A Cross Reference of ISO 14001 Requirements* and Sections in the EMS Manual and Environmental Procedures.

ISO 14001 Clause	EMS Manual Section No.	EP Ref. No.
4.1 General Requirements	4.1	–
4.2 Environmental Policy	4.2.	–
4.3 Planning	4.3	–
4.3.1 Environmental Aspects	4.3.1	EP-01
4.3.2 Legal and Other Requirements	4.3.2	EP-02
4.3.3 Objectives, Targets and Programme(s)	4.3.3	–
4.4 Implementation and Operation	4.4	–
4.4.1 Resources, Roles, Responsibility and Authority	4.4.1	–
4.4.2 Competence, Training, and Awareness	4.4.2	EP-03
4.4.3 Communication	4.4.3	–
4.4.4 Documentation	4.4.4	–
4.4.5 Control of Documents	4.4.5	EP-04
4.4.6 Operational Control	4.4.6	All EIs
4.4.7 Emergency Preparedness and Response	4.4.7	EP-05
4.5 Checking	4.5	–
4.5.1 Monitoring and Measurement	4.5.1	EP-06
4.5.2 Evaluation of Compliance	4.5.2	EP-06
4.5.3 Nonconformity, Corrective Action and Preventive Action	4.5.3	EP-07
4.5.4 Control of Records	4.5.4	EP-08
4.5.5 Internal Audit	4.5.5	EP-09
4.6 Management Review	4.6	–

* ISO 14001:2004 is referred.

Appendix B Controlled Document List

Document No.	Document/Form Name
CP-01	Environmental Policy
O&T-YYYY	Objectives, Targets and Programmes
EAR-01	Register of Environmental Aspects
LR-01	Register of Legal and Other Requirements
EM-01	Environmental Management System Manual
EP-01	Identification of Environmental Aspects and Significance Evaluation
EP-02	Review of Legal and Other Requirements
EP-03	Training
EP-04	Control of Documents
EP-05	Environmental Emergency Preparedness and Response
EP-06	Environmental Monitoring and Evaluation of Compliance
EP-07	Enquiry / Complaint / Nonconformity Handling
EP-08	Control of Records
EP-09	Internal Audit
EI-01	Environmental Management Plan
EI-02	Waste Management Plan
EI-03	Environmental Instruction for Building and Civil Engineering Design
EI-04	Best Practices for Construction Activities
EI-05	Selection and Control of Contractors Regarding Environmental Performance
EI-06	Green Purchasing for Office
EI-07	Environmental Office Practices
EI-08	Environmental Practices for Using Company's Car