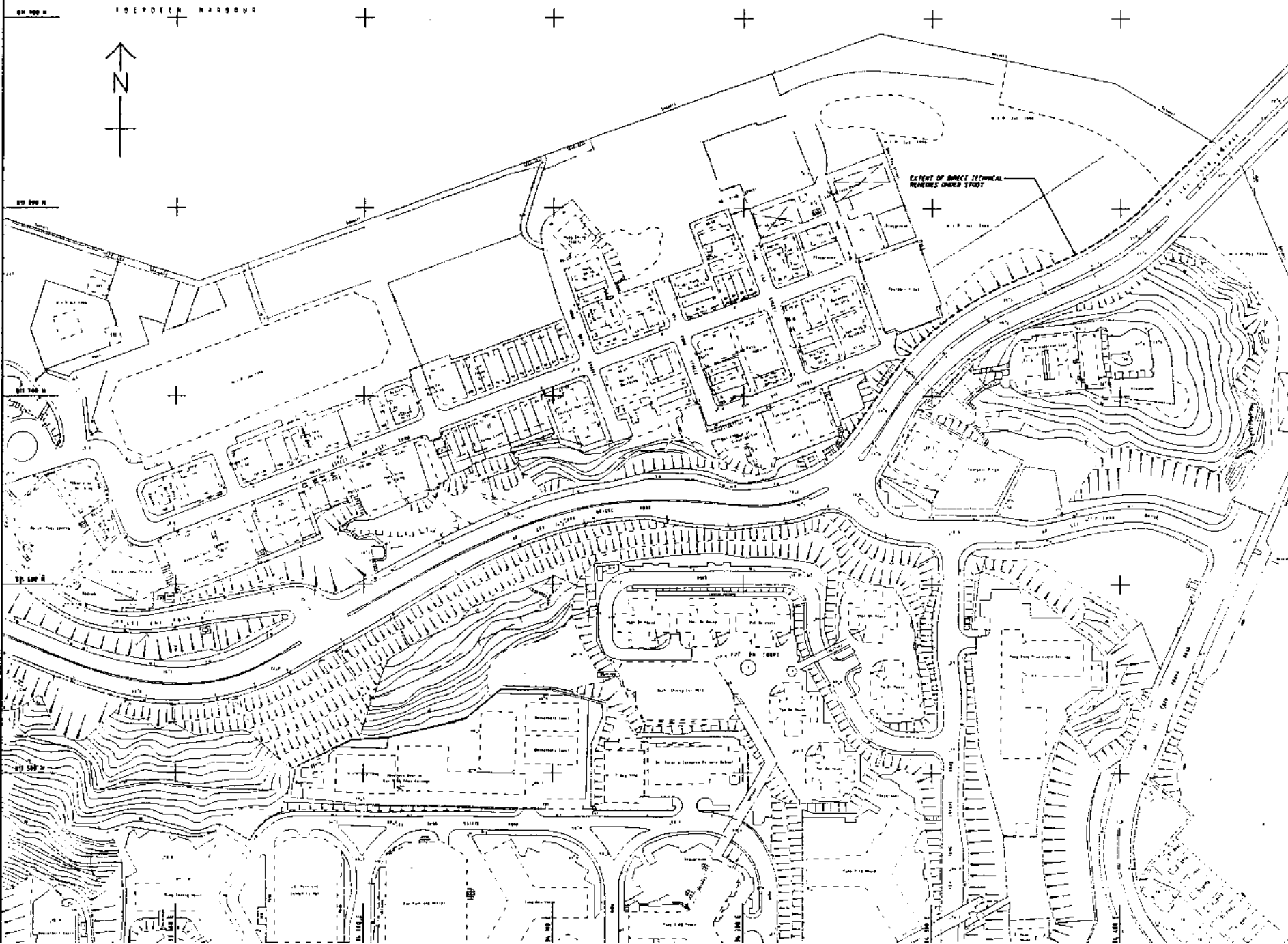



FIGURES



--	--	--	--	--	--	--	--	--	--

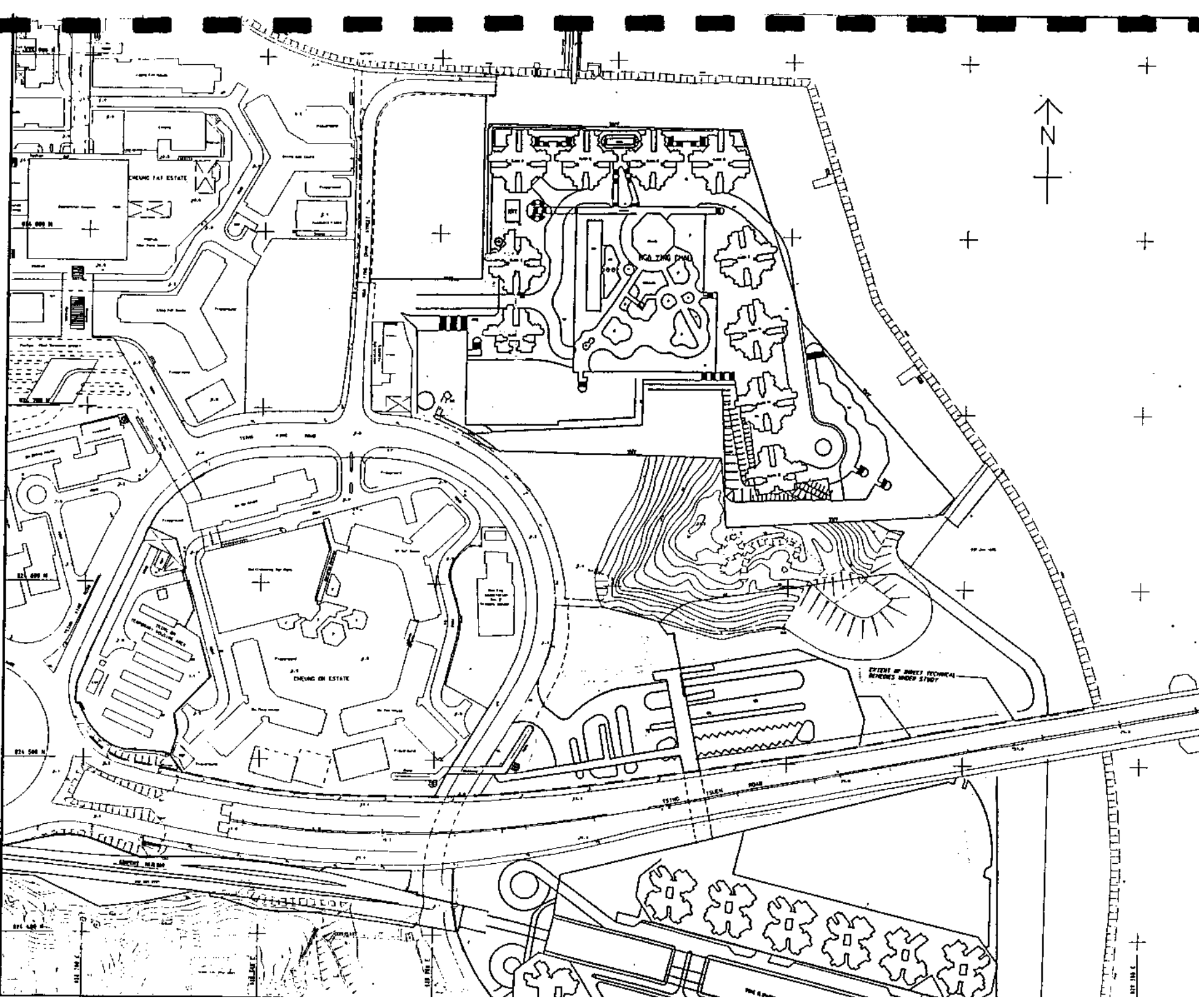

ENVIRONMENTAL PROTECTION DEPARTMENT
 FEASIBILITY STUDY FOR PROVIDING NOISE MITIGATION MEASURES ON EXISTING FLYOVERS


AP LEI CHAU BRIDGE LOCATION & KEY PLAN

MAUNSELL CONSULTANTS ASIA LTD
 茂華顧問有限公司

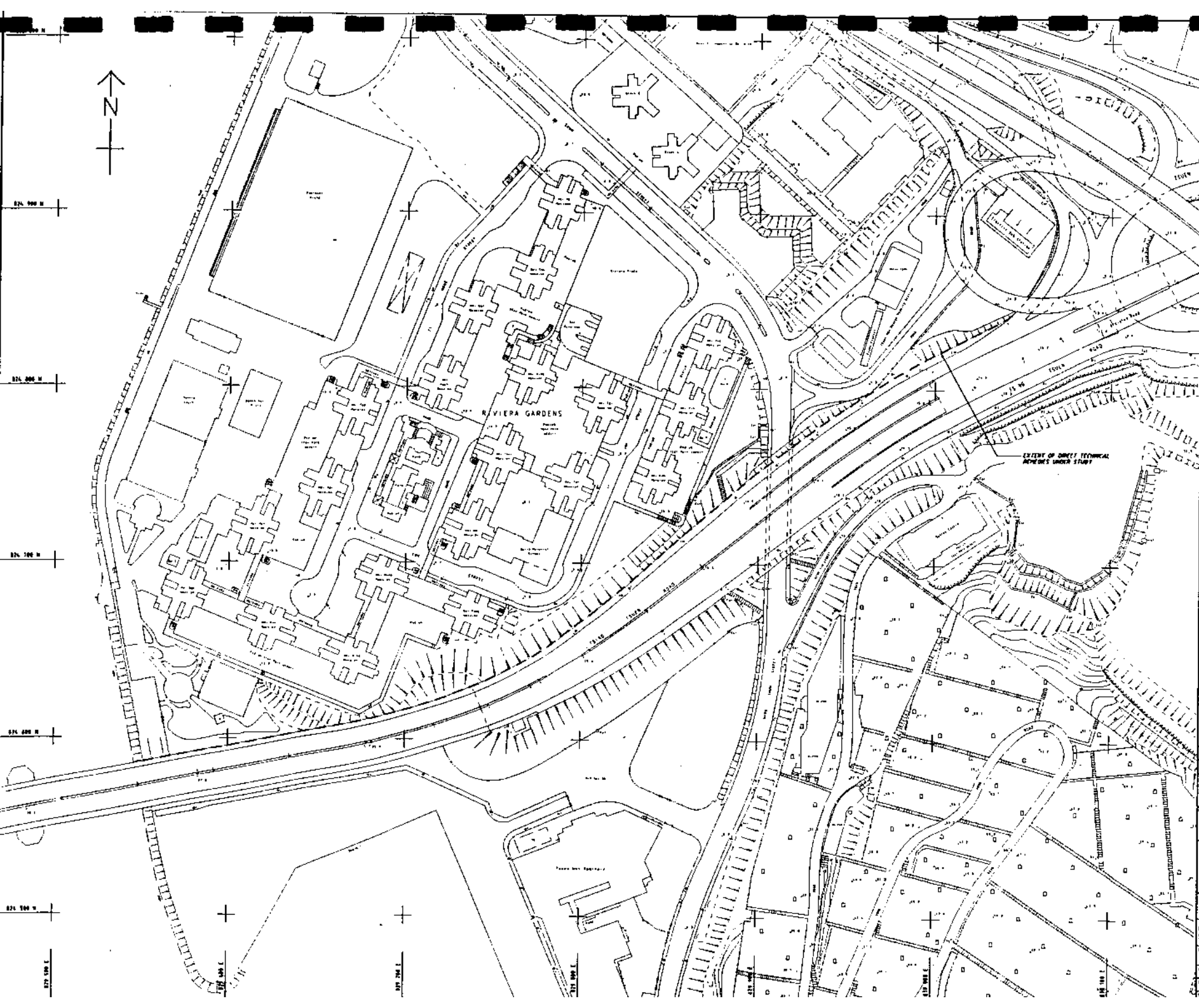
DRG NO 圖號		Figure 1-1	
DATE 日期	SCALE 比例尺	SHEET NO. 圖號	TOTAL SHEETS 總圖數
DRAWN BY 繪圖人	CHECKED BY 校核人	DATE 日期	PRELIMINARY 初步

Maunsell



 ENVIRONMENTAL PROTECTION DEPARTMENT	
FEASIBILITY STUDY FOR PROVIDING NOISE MITIGATION MEASURES ON EXISTING FLYOVERS	
TSING TSUEN BRIDGE LOCATION & KEY PLAN	
SHEET 1 OF 2	
MAUNSELL CONSULTANTS ASIA LTD. 馬善士顧問有限公司	
FIGURE NO. 圖號 FIGURE 1.2	
DATE 日期 11/04/97	DRAWN BY 繪圖 CE 95/97
CHECKED BY 校核 11/04/97	SCALE 比例 PRELIMINARY
EMPLOYMENT RECORD	

Maunsell



ENVIRONMENTAL PROTECTION DEPARTMENT

FEASIBILITY STUDY FOR PROVIDING NOISE MITIGATION MEASURES ON EXISTING FLYOVERS

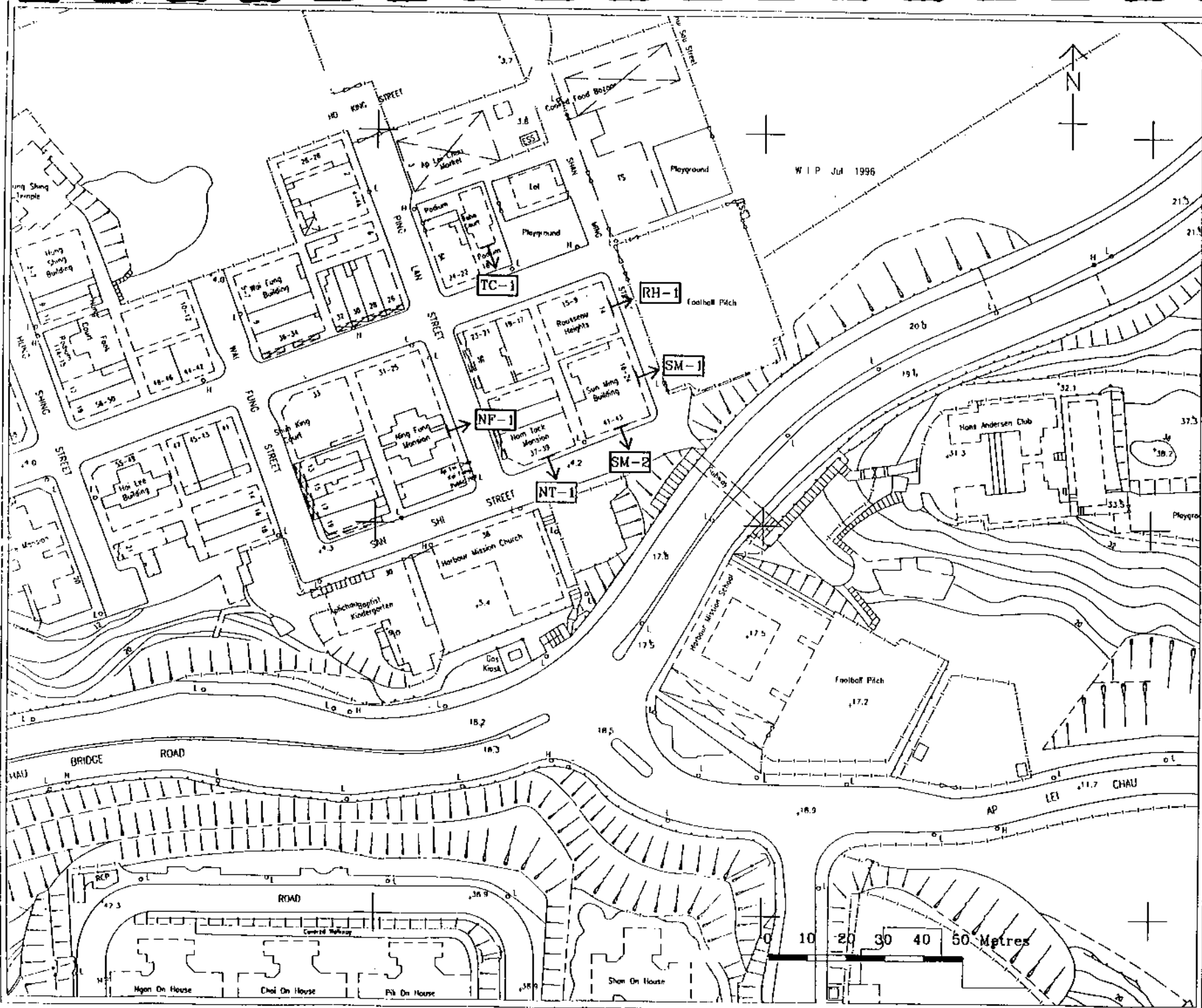
TSING TSUEN BRIDGE LOCATION & KEY PLAN

MAINSSELL CONSULTANTS ASIA LTD
 及誠信建築師事務所

Figure 1-3

PRELIMINARY

Mainsell

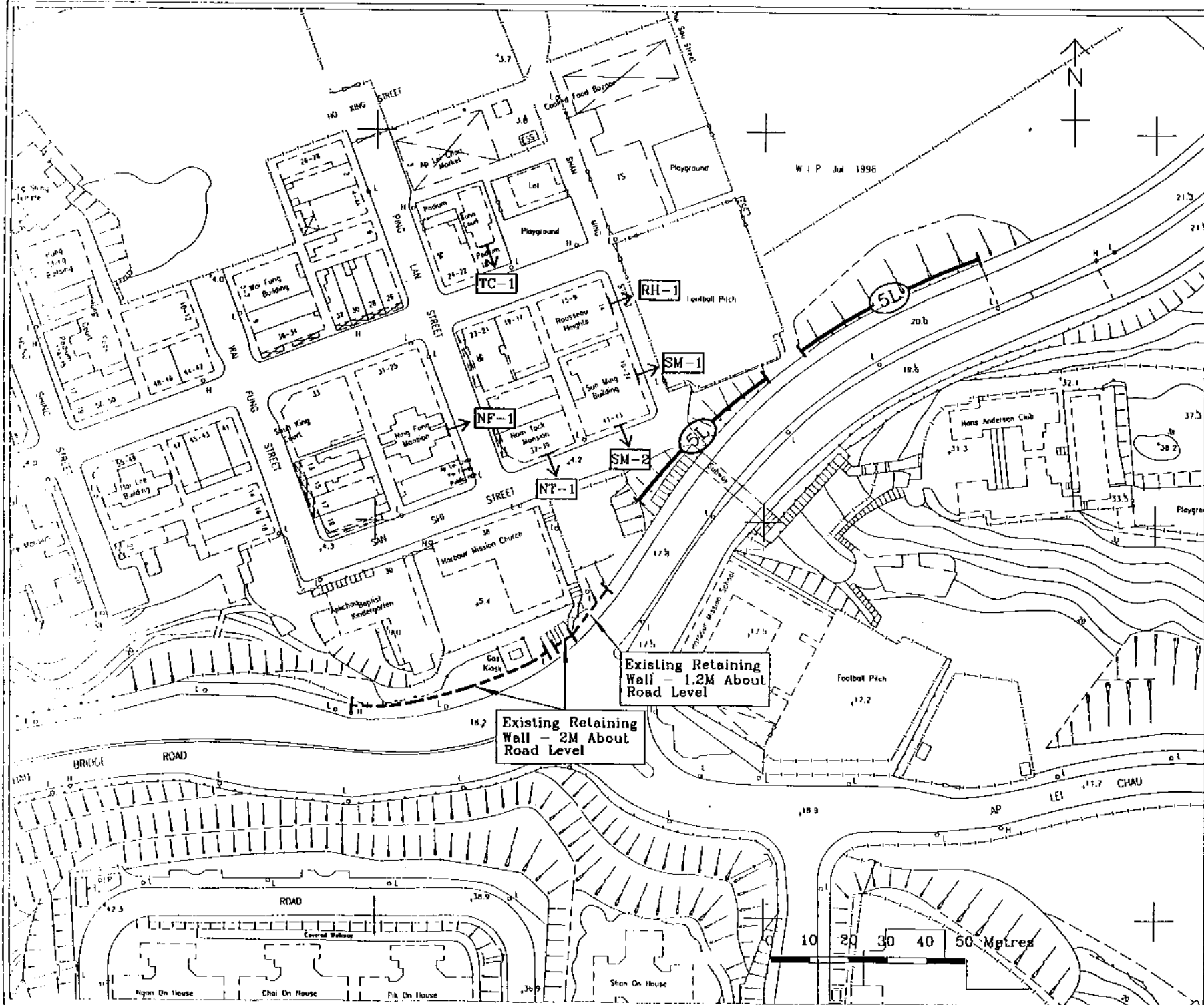


LEGEND
 → **SM-1** LOCATION OF REPRESENTATIVE NSR

W I P Jul 1996

ENVIRONMENTAL PROTECTION DEPARTMENT	
FEASIBILITY STUDY FOR PROVIDING NOISE MITIGATION MEASURES ON EXISTING FLYOVERS	
LOCATIONS OF REPRESENTATIVE NSR ALONG AP LEI CHAU BRIDGE	
MAUNSELL CONSULTANTS ASIA LTD. 茂德建築工程顧問有限公司	
FIGURE NO. 圖號	Figure 4-1
SCALE 比例	AS SHOWN
COPYRIGHT RESERVED 版權保留	

Maunsell



LEGEND

(5L) PROPOSED 5M INVERTED L-SHAPED BARRIER

W I P Jul 1996

Existing Retaining Wall - 1.2M About Road Level

Existing Retaining Wall - 2M About Road Level

ENVIRONMENTAL PROTECTION DEPARTMENT

FEASIBILITY STUDY FOR PROVIDING NOISE MITIGATION MEASURES ON EXISTING FLYOVERS

Ap Lei Chau Bridge
- Location of Proposed Noise Barrier

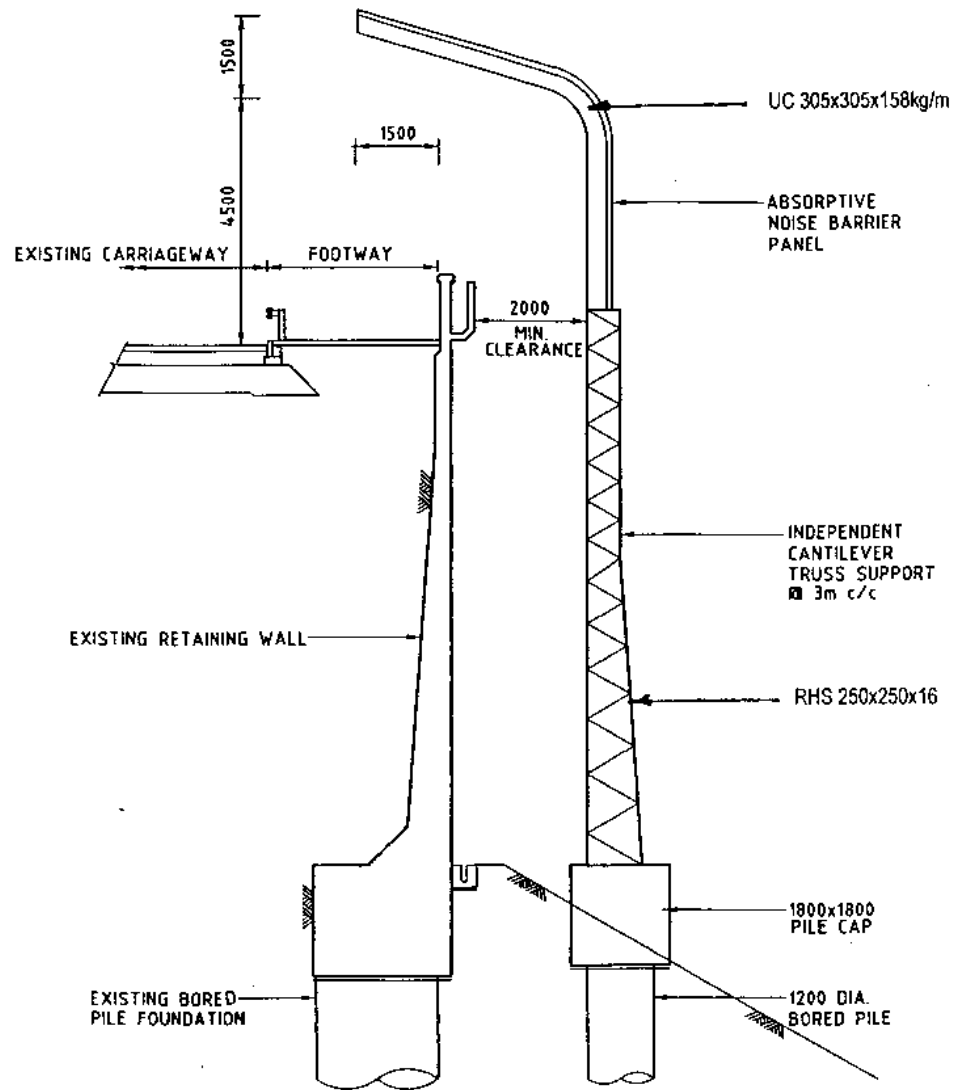
MAUNSELL CONSULTANTS ASIA LTD
茂華諮詢工程師有限公司

FIGURE NO. Figure 4-2

SCALE AS SHOWN

© COPYRIGHT RESERVED

MAUNSELL



SCALE 1 : 100

REV	DATE	BY	CHK	APP
1				
2				
3				
4				
5				
6				
7				
8				
9				
10				

ENVIRONMENTAL PROTECTION DEPARTMENT

FEASIBILITY STUDY FOR PROVIDING NOISE MITIGATION MEASURES ON EXISTING FLYOVERS

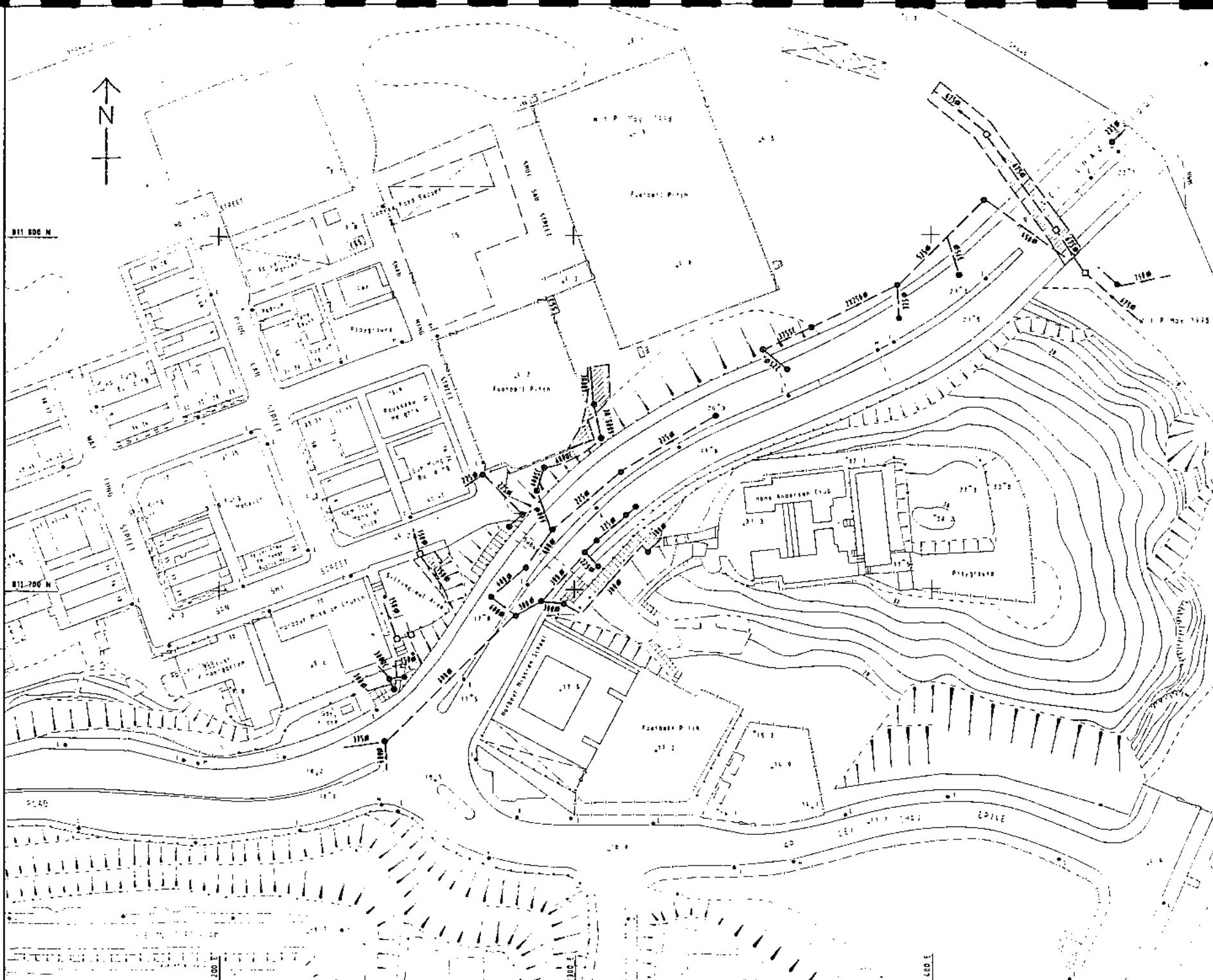
Ap Lei Chau Bridge - Cross Section of Inverted-L Shaped Noise Barrier

SUMNER & PARTNERS ARCHITECTS LTD.
 2/F, 200 WING LOK STREET, HONG KONG

DRAWING TITLE Figure 4-3

DATE	SCALE	REVISION
15/11/77	1:100	
BY	CHK	APP
AS SHOWN		

Hauhsell



- LEGEND:**
- EXISTING STORMWATER DRAINAGE
 - EXISTING FOUL SEWERAGE
 - EXISTING STORMWATER MANHOLE
 - EXISTING FOUL SEWERAGE MANHOLE
 - EXISTING EATCHPIT
 - EXISTING DRAINAGE RESERVE

DATE	BY	CHKD	APP'D
FIRST ISSUE	AC	AC	ZW

ENVIRONMENTAL PROTECTION DEPARTMENT
 FEASIBILITY STUDY FOR PROVIDING NOISE MITIGATION MEASURES ON EXISTING FLYOVERS

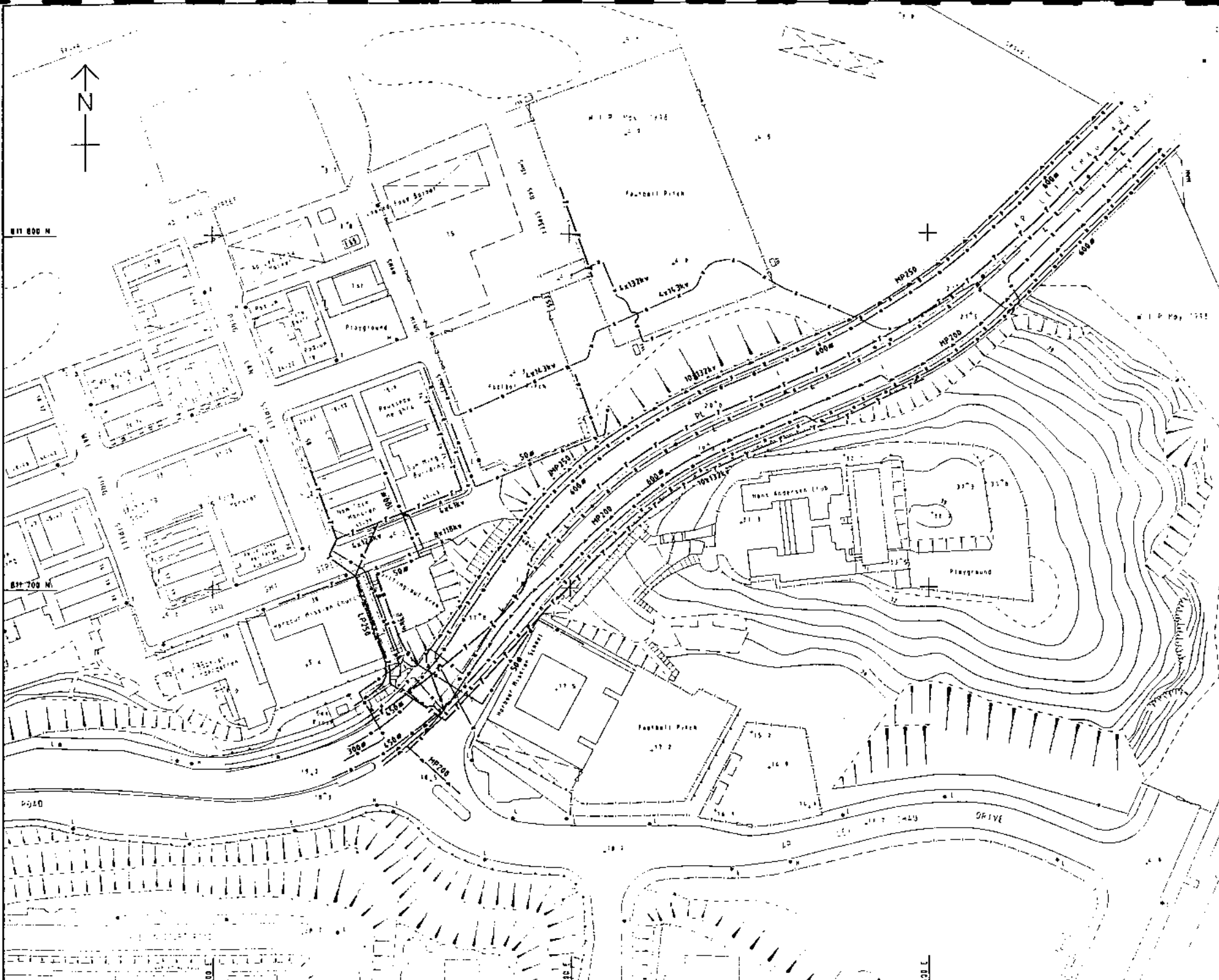
AP LEI CHAU BRIDGE EXISTING LAYOUT OF DRAINAGE AND SEWERAGE

MAUNSELL CONSULTANTS ASIA LTD
 馬敏時顧問有限公司

DRG. NO. Figure 4-4

DATE: 15/92
 SCALE: PRELIMINARY

Maunsell



- LEGEND:**
- WATERSUPPLY**
 - EXISTING FRESH WATER SUPPLY
 - - - EXISTING SALT WATER SUPPLY
 - ELECTRICITY**
 - 11KV — EXISTING HIGH TENSION CABLE
 - — EXISTING PUBLIC LIGHTING CABLE
 - TELEPHONE**
 - - - EXISTING TELEPHONE DUCT
 - GAS**
 - - - EXISTING PRESSURE GASMAIN

REV	DESCRIPTION	DATE	BY	CHECKED
01	FIRST ISSUE		AL	AC
02			CM	099

ENVIRONMENTAL PROTECTION DEPARTMENT
 FEASIBILITY STUDY FOR PROVIDING NOISE MITIGATION MEASURES ON EXISTING FLYOVERS

AP LEI CHAU BRIDGE EXISTING LAYOUT OF UTILITES AND SERVICES

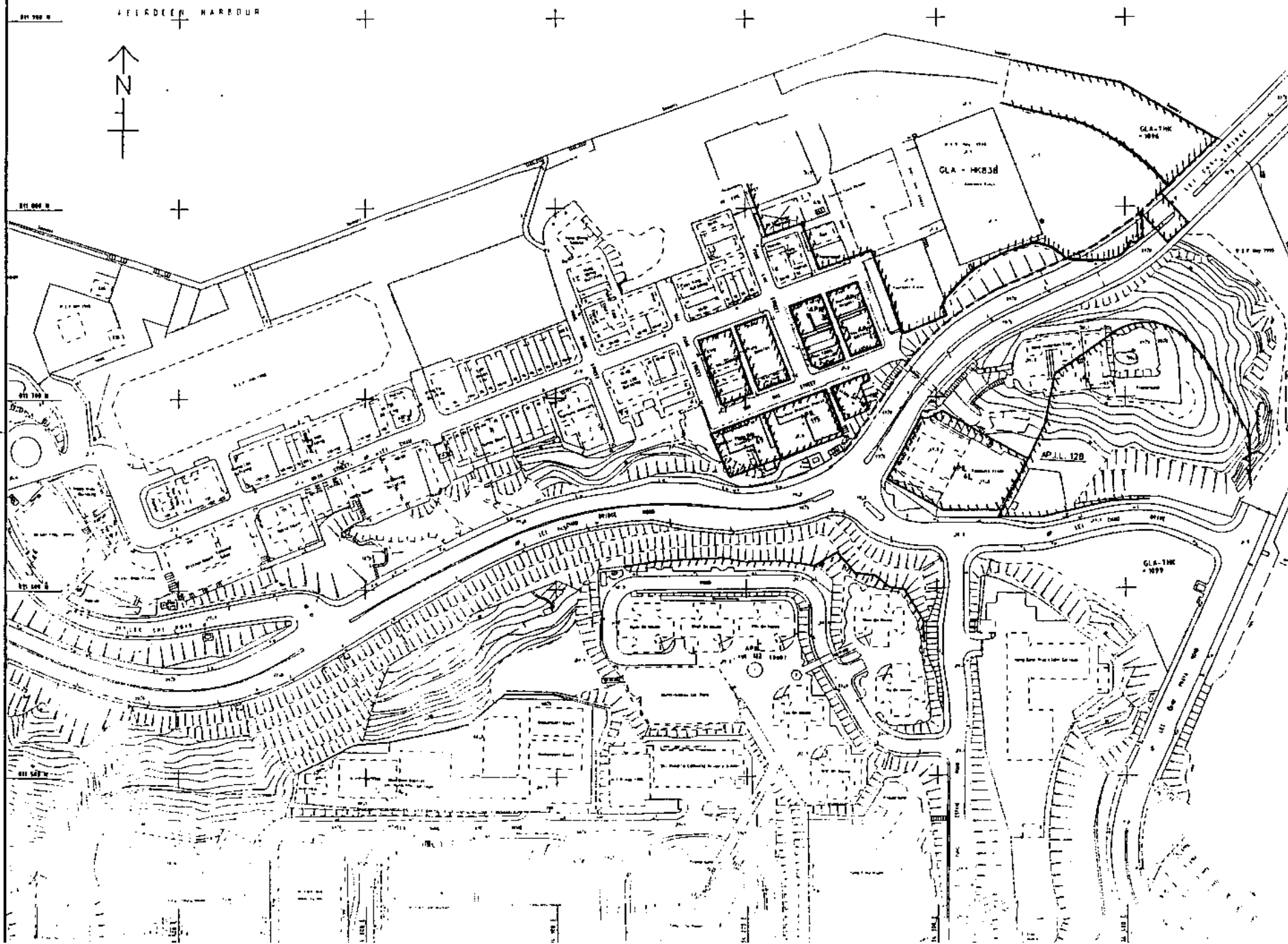
MAUNSELL CONSULTANTS ASIA LTD
 馬善士顧問有限公司

DRG. NO. Figure 4-5

DATE	SCALE	PROJECT NO.	DATE	PROJECT NAME
01/01/97	1:500	97/001	01/01/97	AP LEI CHAU BRIDGE
BY	CHECKED	DATE	BY	CHECKED
AL	AC	01/01/97	CM	099
DATE	SCALE	PROJECT NO.	DATE	PROJECT NAME
01/01/97	1:500	97/001	01/01/97	AP LEI CHAU BRIDGE

Maunsell

PRELIMINARY



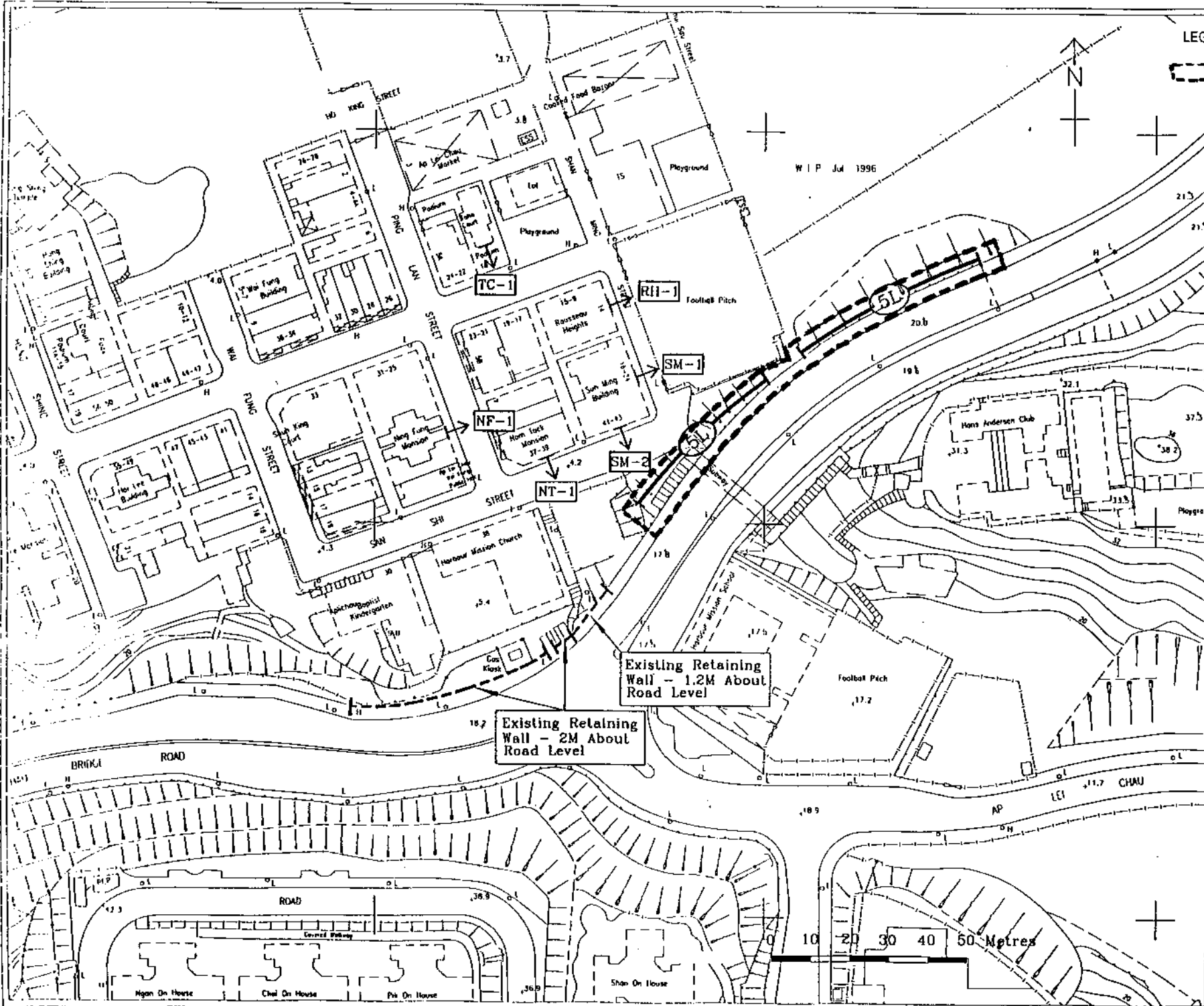
ENVIRONMENTAL PROTECTION DEPARTMENT
 FEASIBILITY STUDY FOR PROVIDING NOISE MITIGATION MEASURES ON EXISTING FLYOVERS

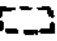
AP LEI CHAU BRIDGE LAND STATUS PLAN

MAUNSELL CONSULTANTS ASIA LTD.
 馬善士顧問有限公司

FIGURE NO 圖號	Figure 4-6
SCALE 比例尺	1:1000
DATE 日期	PRELIMINARY

Maunsell



LEGEND:
 BOUNDARY OF LANDS FOR POSITIONING MITIGATION STRUCTURE

W I P Jul 1996

Existing Retaining Wall - 2M About Road Level

Existing Retaining Wall - 1.2M About Road Level

ENVIRONMENTAL PROTECTION DEPARTMENT

FEASIBILITY STUDY FOR PROVIDING NOISE MITIGATION MEASURES ON EXISTING FLYOVERS

AP LEI CHAU BRIDGE LAND REQUIREMENT PLAN

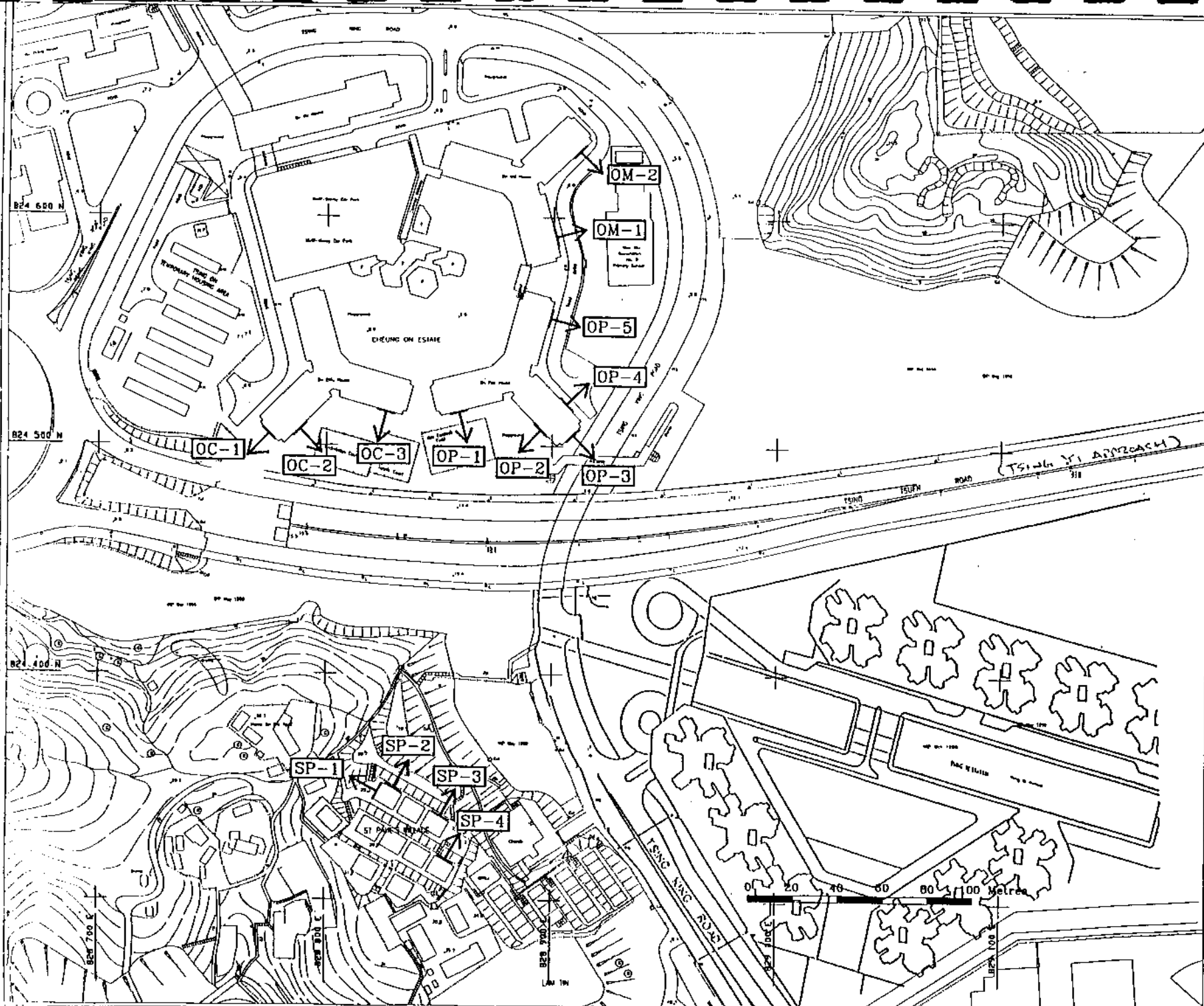
MAUNSELL CONSULTANTS ASIA LTD
 茂盛(亞洲)顧問有限公司

FIGURE NO. 圖紙編號 Figure 4-7


SCALE 比例 AS SHOWN

COPYRIGHT RESERVED 版權保留

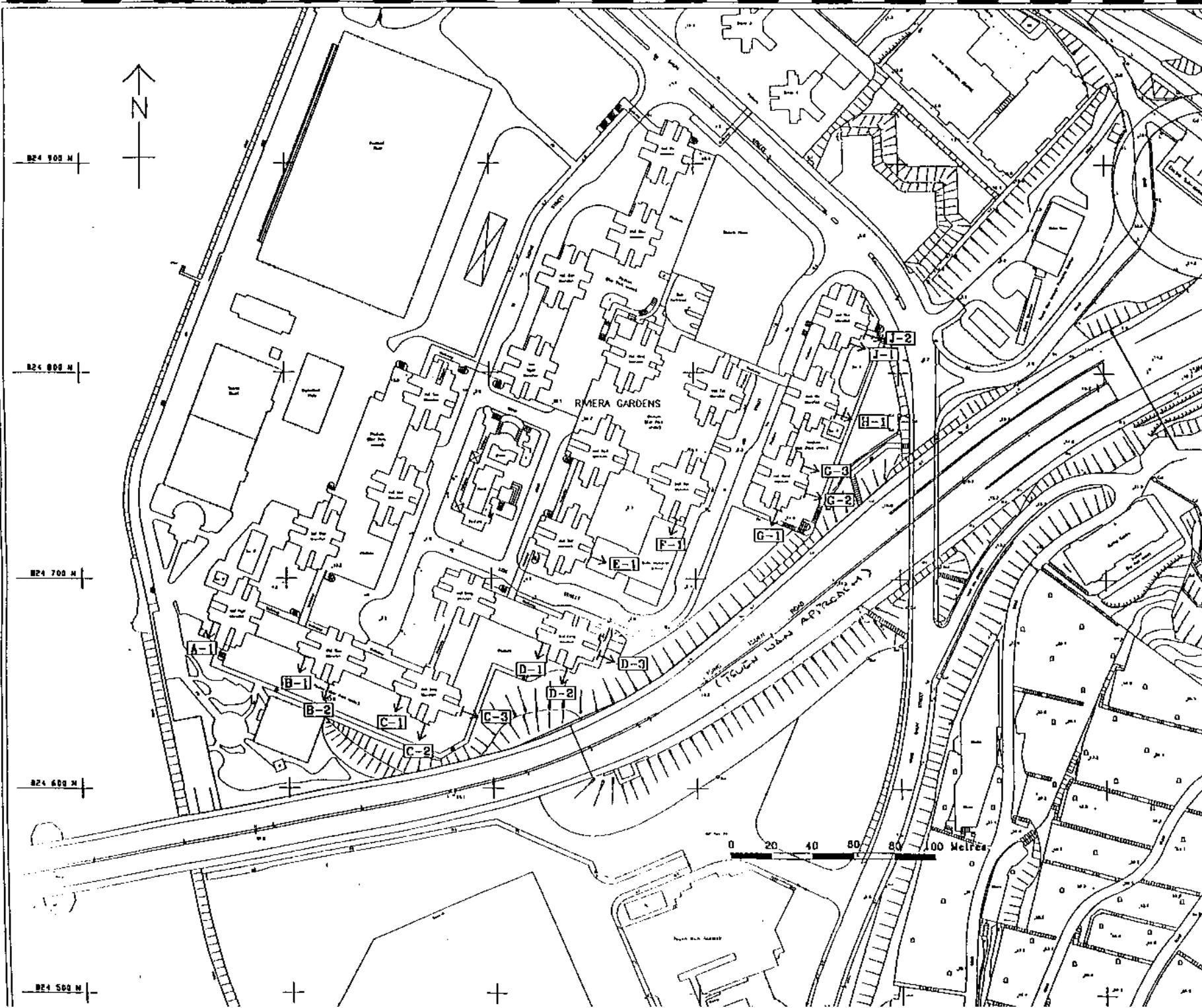
Maunsell



LEGEND
 → OM-1 LOCATION OF REPRESENTATIVE NSR

 ENVIRONMENTAL PROTECTION DEPARTMENT FEASIBILITY STUDY FOR PROVIDING NOISE MITIGATION MEASURES ON EXISTING FLYOVERS LOCATIONS OF REPRESENTATIVE NSR ALONG TSING TSUEN ROAD (SHEET 1 OF 2)	
MAUNSELL CONSULTANTS ASIA LTD 茂盛諮詢工程師有限公司	
FIGURE NO.	Figure 5-1
SCALE	AS SHEWN
COPYRIGHT RESERVED 版權保留	

MAUNSELL



LEGEND
 ↳ I-2 LOCATION OF REPRESENTATIVE NSR

ENVIRONMENTAL PROTECTION DEPARTMENT

FEASIBILITY STUDY FOR PROVIDING NOISE MITIGATION MEASURES ON EXISTING FLYOVERS

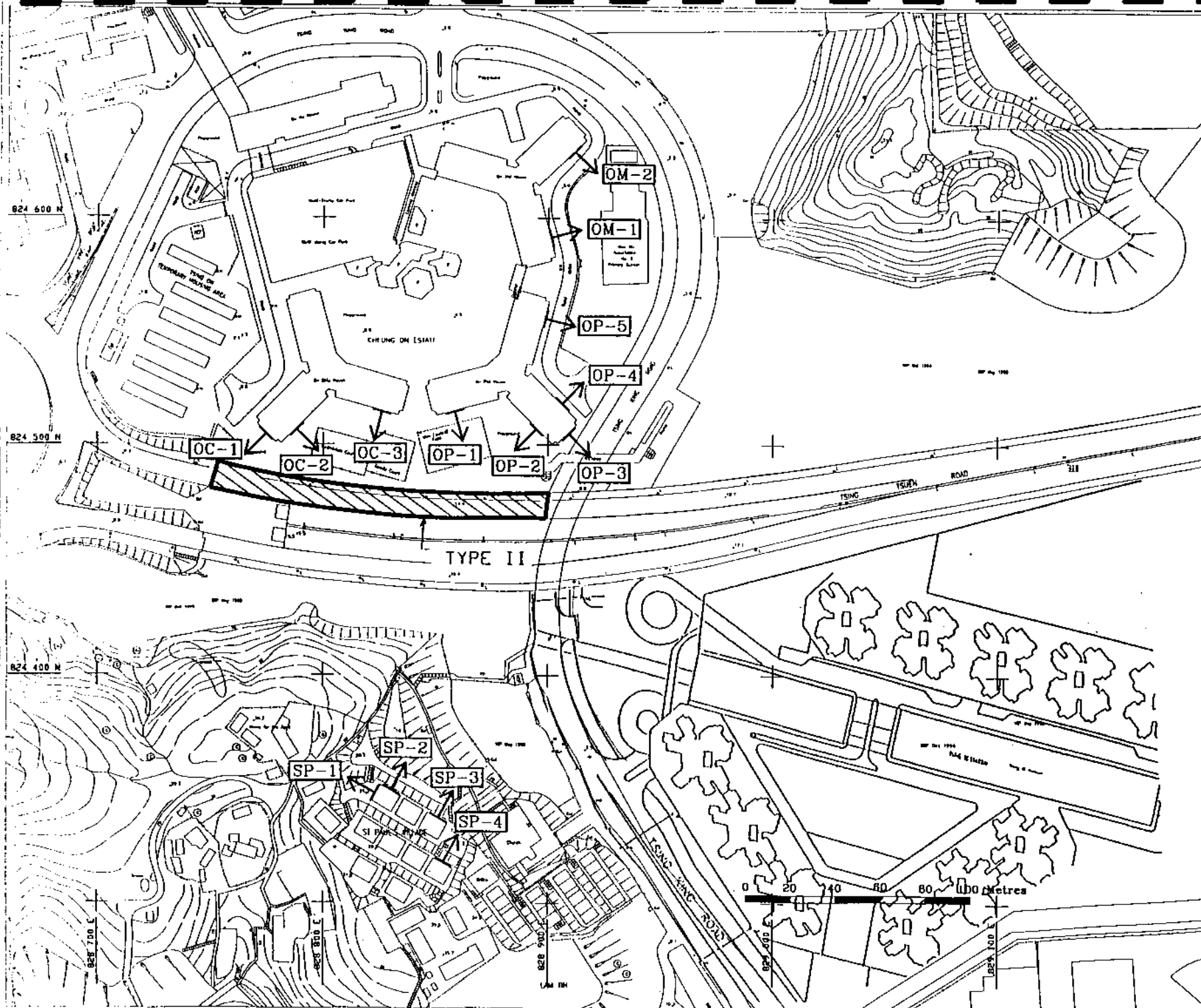
LOCATIONS OF REPRESENTATIVE NSR ALONG TSING TSUEN ROAD (SHEET 2 OF 2)

MAHNEILL CONSULTANTS ASIA LTD.
 馬尼爾工程顧問有限公司

FIGURE NO. Figure 5-2

SCALE 1:500 AS SHOWN

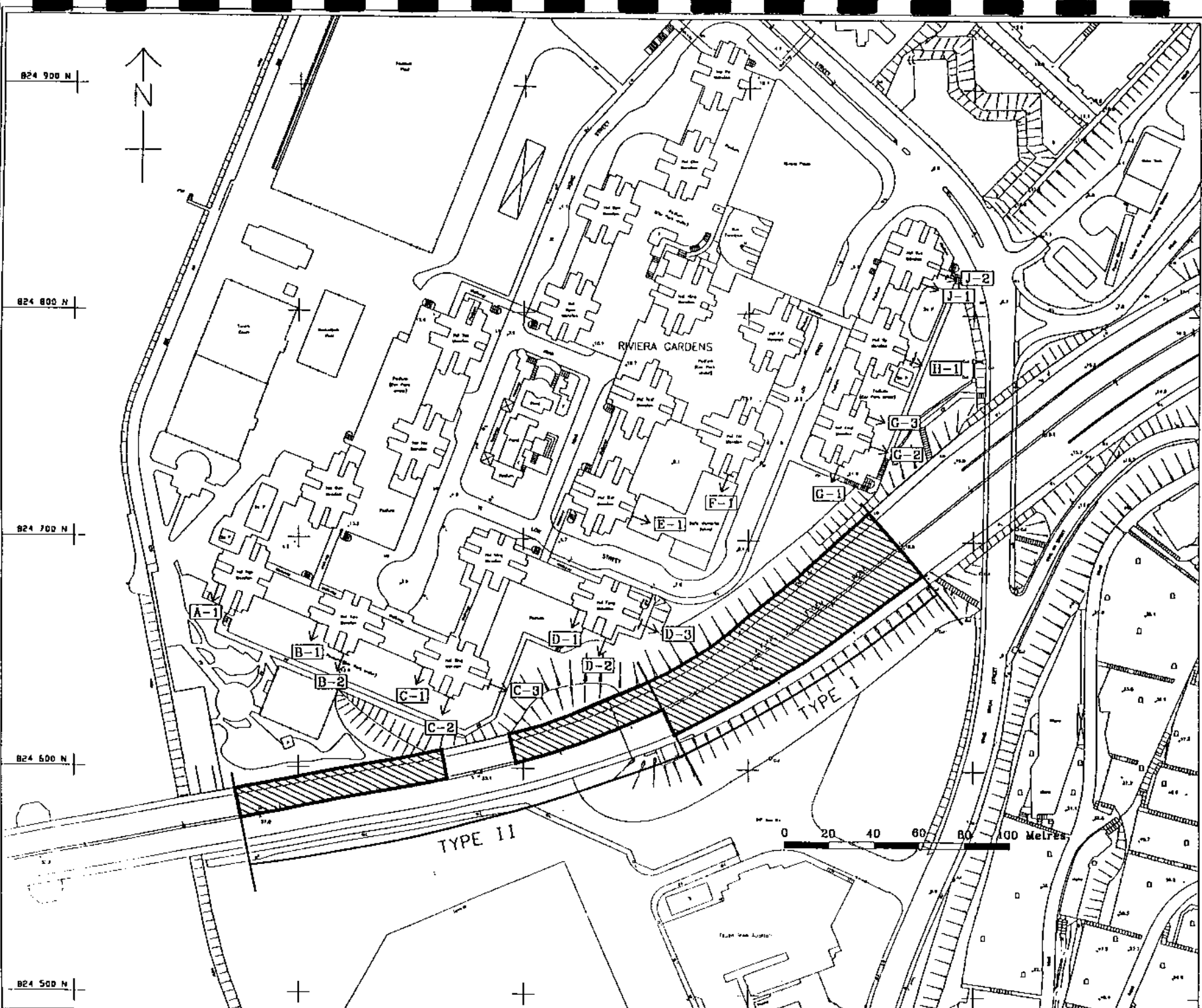
© COPYRIGHT RESERVED





- LEGEND**
- OM-1 LOCATION OF REPRESENTATIVE NSR
 - ▨ PARTIAL ENCLOSURE

ENVIRONMENTAL PROTECTION DEPARTMENT	
FEASIBILITY STUDY FOR PROVIDING NOISE MITIGATION MEASURES ON EXISTING FLYOVERS	
Tsing Tsuen Bridge - Location of Proposed Partial Enclosures	
MALISELL CONSULTANTS ASIA LTD. 茂業諮詢工程師有限公司	
FIGURE NO. 圖號	Figure 5-3
SCALE 比例	AS SHOWN
COPYRIGHT RESERVED	

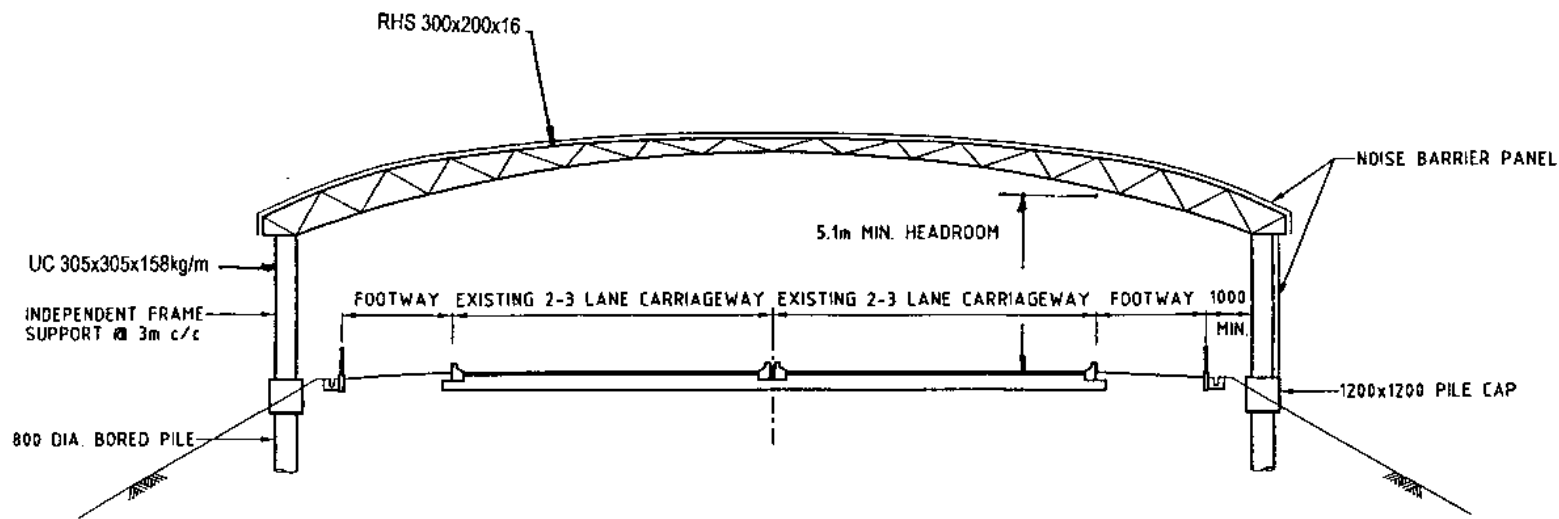
MaliseLL



- LEGEND**
- [J-2] LOCATION OF REPRESENTATIVE NSR
 - TYPE I - PARTIAL ENCLOSURE COVERING THE ENTIRE WIDTH OF CARRIAGEWAY
 - TYPE II - PARTIAL ENCLOSURE COVERING EASTBOUND CARRIAGEWAY

 ENVIRONMENTAL PROTECTION DEPARTMENT	
FEASIBILITY STUDY FOR PROVIDING NOISE MITIGATION MEASURES ON EXISTING FLYOVERS	
Tsing Tsuen Bridge - Location of Proposed Partial Enclosures	
(SHEET 2)	
MAUNSELL CONSULTANTS ASIA LTD. 茂盛諮詢工程顧問有限公司	
FIGURE NO.	Figure 5-3
SCALE	AS SHOWN
 COPYRIGHT RESERVED	

Maunsell



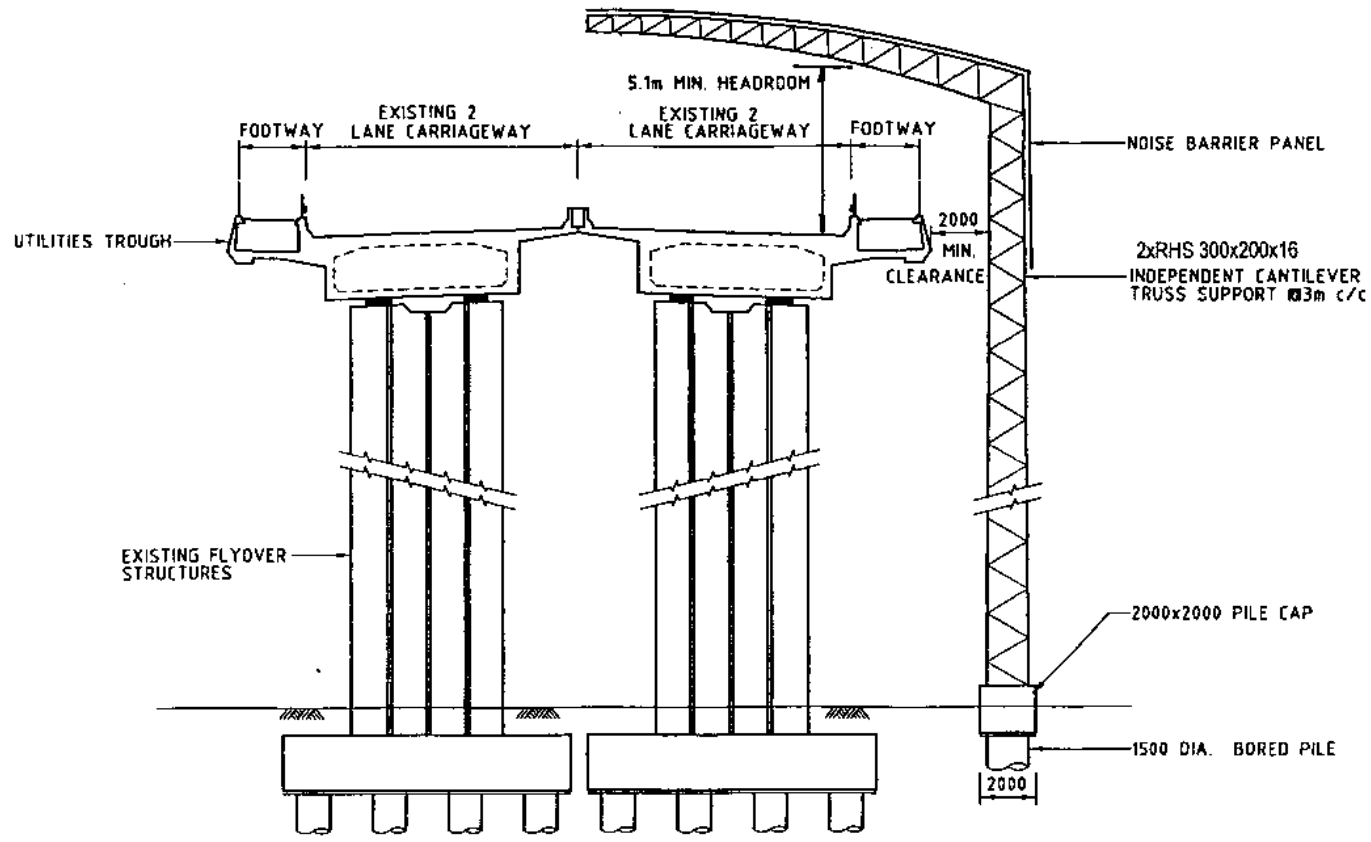
SCALE 1 : 200

REV	DESCRIPTION	DATE	BY	CHECKED
1	ISSUE	19/07/77	AC	AC
2	REVISION	22/07/77	AC	AC
3	REVISION	22/07/77	AC	AC
4	REVISION	22/07/77	AC	AC
5	REVISION	22/07/77	AC	AC
6	REVISION	22/07/77	AC	AC
7	REVISION	22/07/77	AC	AC
8	REVISION	22/07/77	AC	AC
9	REVISION	22/07/77	AC	AC
10	REVISION	22/07/77	AC	AC
11	REVISION	22/07/77	AC	AC
12	REVISION	22/07/77	AC	AC
13	REVISION	22/07/77	AC	AC
14	REVISION	22/07/77	AC	AC
15	REVISION	22/07/77	AC	AC
16	REVISION	22/07/77	AC	AC
17	REVISION	22/07/77	AC	AC
18	REVISION	22/07/77	AC	AC
19	REVISION	22/07/77	AC	AC
20	REVISION	22/07/77	AC	AC
21	REVISION	22/07/77	AC	AC
22	REVISION	22/07/77	AC	AC
23	REVISION	22/07/77	AC	AC
24	REVISION	22/07/77	AC	AC
25	REVISION	22/07/77	AC	AC
26	REVISION	22/07/77	AC	AC
27	REVISION	22/07/77	AC	AC
28	REVISION	22/07/77	AC	AC
29	REVISION	22/07/77	AC	AC
30	REVISION	22/07/77	AC	AC
31	REVISION	22/07/77	AC	AC
32	REVISION	22/07/77	AC	AC
33	REVISION	22/07/77	AC	AC
34	REVISION	22/07/77	AC	AC
35	REVISION	22/07/77	AC	AC
36	REVISION	22/07/77	AC	AC
37	REVISION	22/07/77	AC	AC
38	REVISION	22/07/77	AC	AC
39	REVISION	22/07/77	AC	AC
40	REVISION	22/07/77	AC	AC
41	REVISION	22/07/77	AC	AC
42	REVISION	22/07/77	AC	AC
43	REVISION	22/07/77	AC	AC
44	REVISION	22/07/77	AC	AC
45	REVISION	22/07/77	AC	AC
46	REVISION	22/07/77	AC	AC
47	REVISION	22/07/77	AC	AC
48	REVISION	22/07/77	AC	AC
49	REVISION	22/07/77	AC	AC
50	REVISION	22/07/77	AC	AC
51	REVISION	22/07/77	AC	AC
52	REVISION	22/07/77	AC	AC
53	REVISION	22/07/77	AC	AC
54	REVISION	22/07/77	AC	AC
55	REVISION	22/07/77	AC	AC
56	REVISION	22/07/77	AC	AC
57	REVISION	22/07/77	AC	AC
58	REVISION	22/07/77	AC	AC
59	REVISION	22/07/77	AC	AC
60	REVISION	22/07/77	AC	AC
61	REVISION	22/07/77	AC	AC
62	REVISION	22/07/77	AC	AC
63	REVISION	22/07/77	AC	AC
64	REVISION	22/07/77	AC	AC
65	REVISION	22/07/77	AC	AC
66	REVISION	22/07/77	AC	AC
67	REVISION	22/07/77	AC	AC
68	REVISION	22/07/77	AC	AC
69	REVISION	22/07/77	AC	AC
70	REVISION	22/07/77	AC	AC
71	REVISION	22/07/77	AC	AC
72	REVISION	22/07/77	AC	AC
73	REVISION	22/07/77	AC	AC
74	REVISION	22/07/77	AC	AC
75	REVISION	22/07/77	AC	AC
76	REVISION	22/07/77	AC	AC
77	REVISION	22/07/77	AC	AC
78	REVISION	22/07/77	AC	AC
79	REVISION	22/07/77	AC	AC
80	REVISION	22/07/77	AC	AC
81	REVISION	22/07/77	AC	AC
82	REVISION	22/07/77	AC	AC
83	REVISION	22/07/77	AC	AC
84	REVISION	22/07/77	AC	AC
85	REVISION	22/07/77	AC	AC
86	REVISION	22/07/77	AC	AC
87	REVISION	22/07/77	AC	AC
88	REVISION	22/07/77	AC	AC
89	REVISION	22/07/77	AC	AC
90	REVISION	22/07/77	AC	AC
91	REVISION	22/07/77	AC	AC
92	REVISION	22/07/77	AC	AC
93	REVISION	22/07/77	AC	AC
94	REVISION	22/07/77	AC	AC
95	REVISION	22/07/77	AC	AC
96	REVISION	22/07/77	AC	AC
97	REVISION	22/07/77	AC	AC
98	REVISION	22/07/77	AC	AC
99	REVISION	22/07/77	AC	AC
100	REVISION	22/07/77	AC	AC

ENVIRONMENTAL PROTECTION DEPARTMENT
 FEASIBILITY STUDY FOR PROVIDING NOISE MITIGATION MEASURES ON EXISTING FLYOVERS
 Tsing Tsuen Bridge - Cross
 Section of Partial Enclosure Type I
 (SHEET 1 OF 2)

MALDEN CONSULTANTS AND ARCHITECTS LTD.
 22, HONG KONG STREET, HONG KONG
 DRAWING NO. Figure 5-4
 SCALE: AS SHOWN

Aamsell



SCALE 1 : 200

REV	DESCRIPTION	DATE	BY	CHECKED
1	FIRST ISSUE	AC	AC	CM
2		AC	AC	CM

ENVIRONMENTAL PROTECTION DEPARTMENT

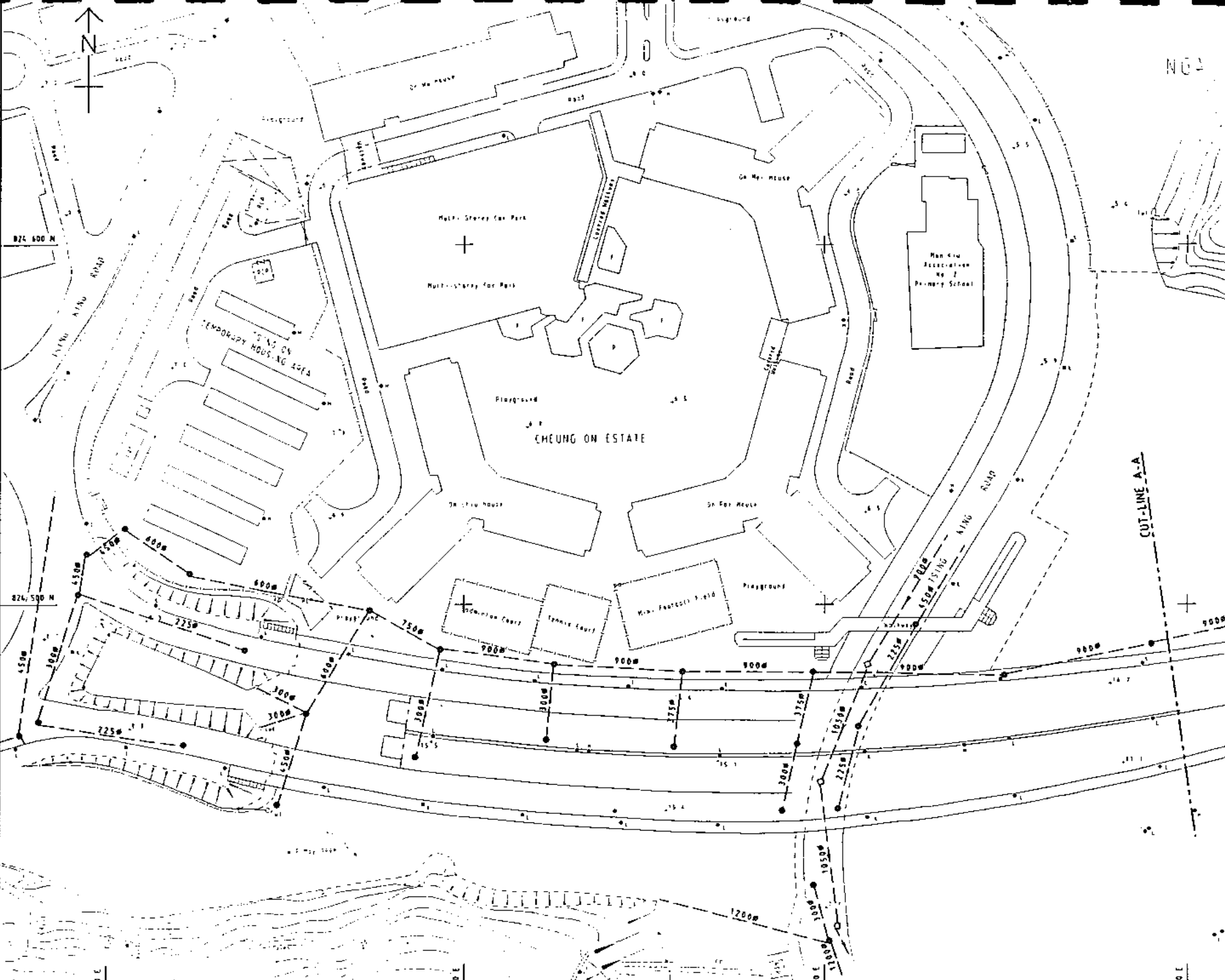
FEASIBILITY STUDY FOR PROVIDING NOISE MITIGATION MEASURES ON EXISTING FLYOVERS

Tsing Tsuen Bridge - Cross Section of Partial Enclosure Type II (SHEET 2 OF 2)

MAUNSELL CONSULTANTS AND ASSOCIATES LTD.
 2/F, 110, WING LOK STREET, HONG KONG

PROJECT NO.	FIGURE	SHEET
AC	5-5	2 OF 2
DATE	DATE	DATE
2.21	21/11/77	21/11/77
BY	CHECKED	DATE
AS SHOWN		

Maunsell



- LEGEND:**
- EXISTING STORMWATER DRAINAGE
 - EXISTING FOUW SEWERAGE
 - EXISTING STORMWATER MANHOLE
 - EXISTING FOUW SEWERAGE MANHOLE
 - EXISTING CATCHPIT
 - DRAINAGE RESERVE

DATE	DESCRIPTION	BY	CHECKED	DATE
FIRST ISSUE		AC	AE	EW
20		2000	2000	2000

ENVIRONMENTAL PROTECTION DEPARTMENT







FEASIBILITY STUDY FOR PROVIDING NOISE MITIGATION MEASURES ON EXISTING FLYOVERS

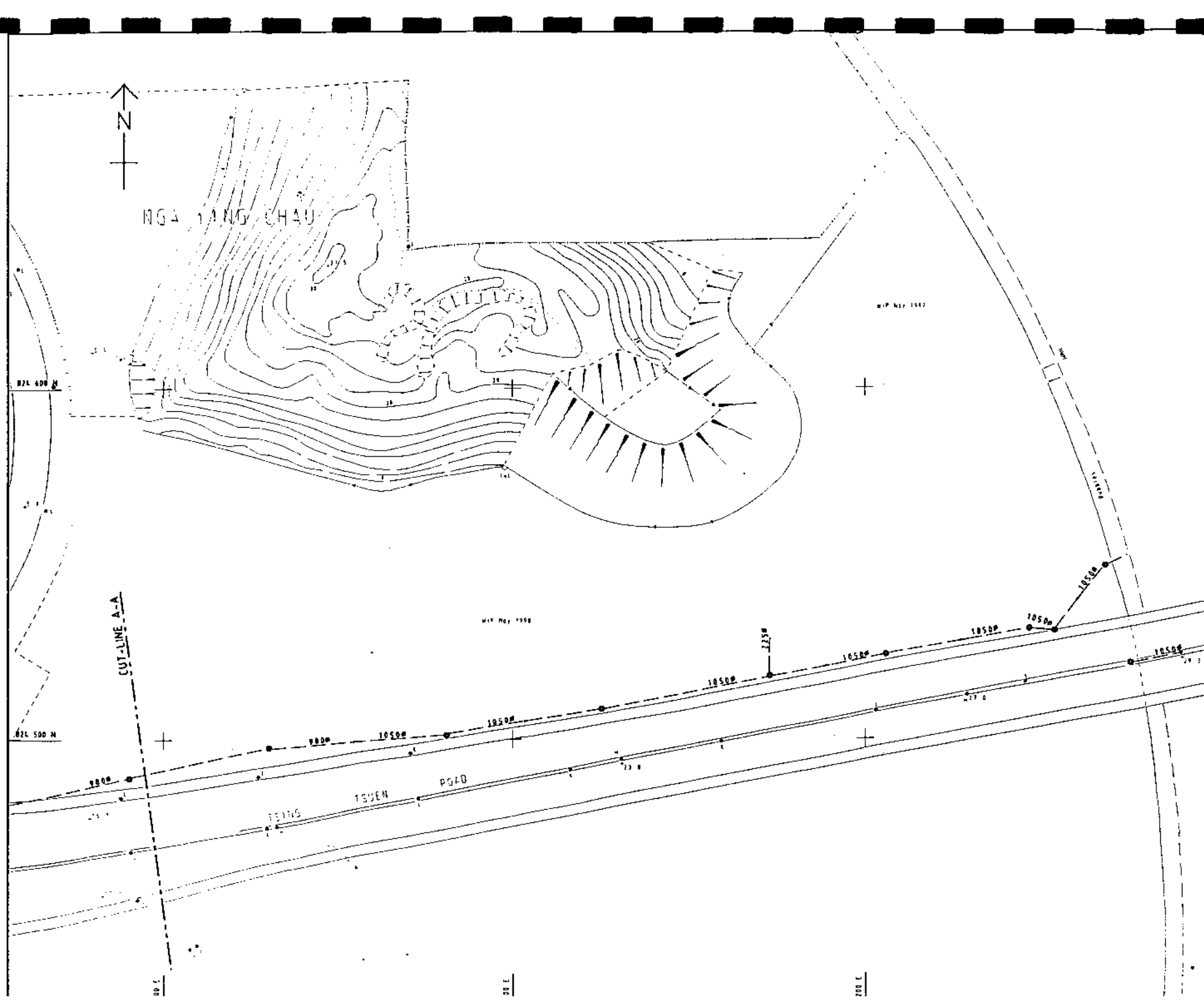
TSING TSUEN BRIDGE EXISTING LAYOUT OF DRAINAGE AND SEWERAGE (SHEET 1)

MAUNSELL CONSULTANTS ASIA LTD
 茂華顧問有限公司

DRG. NO.	FIGURE	5-6
Scale	1:500	
DATE	21/11/99	
STATUS	PRELIMINARY	

maunsell

- LEGEND:**
-  EXISTING STORMWATER DRAINAGE
 -  EXISTING FOUL SEWERAGE
 -  EXISTING STORMWATER MANHOLE
 -  EXISTING FOUL SEWERAGE MANHOLE
 -  EXISTING CATCHPIT
 -  DRAINAGE RESERVE



NO.	DATE	BY	CHECKED	APPROVED
1	FIRST ISSUE	AC	AC	EM
2				
3				
4				
5				
6				
7				
8				
9				
10				
11				
12				
13				
14				
15				
16				
17				
18				
19				
20				
21				
22				
23				
24				
25				
26				
27				
28				
29				
30				
31				
32				
33				
34				
35				
36				
37				
38				
39				
40				
41				
42				
43				
44				
45				
46				
47				
48				
49				
50				
51				
52				
53				
54				
55				
56				
57				
58				
59				
60				
61				
62				
63				
64				
65				
66				
67				
68				
69				
70				
71				
72				
73				
74				
75				
76				
77				
78				
79				
80				
81				
82				
83				
84				
85				
86				
87				
88				
89				
90				
91				
92				
93				
94				
95				
96				
97				
98				
99				
100				

ENVIRONMENTAL PROTECTION DEPARTMENT
 FEASIBILITY STUDY FOR PROVIDING NOISE MITIGATION MEASURES ON EXISTING FLYOVERS

TSING TSUEN BRIDGE
 EXISTING LAYOUT OF DRAINAGE AND SEWERAGE

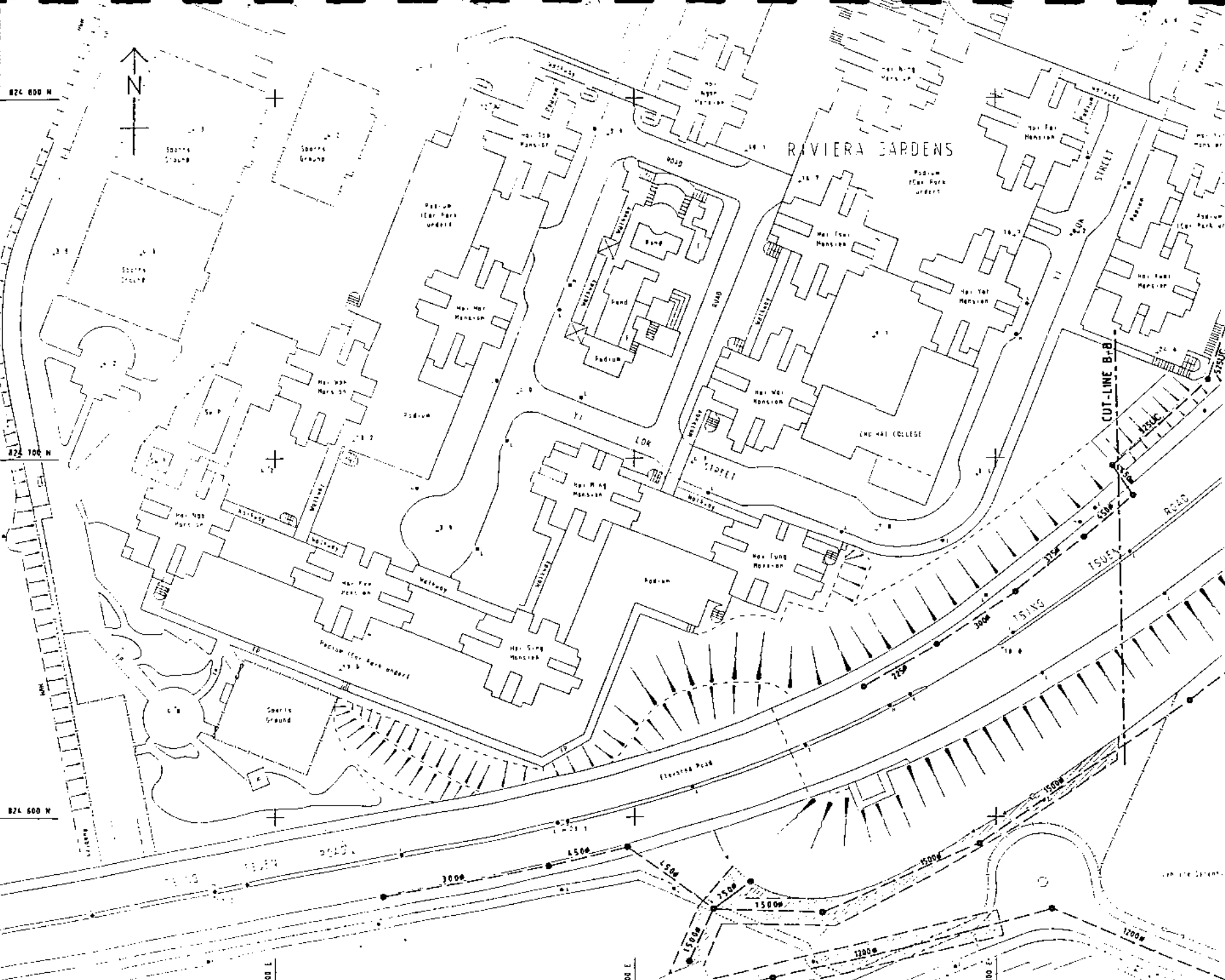
HAUNSELL CONSULTANTS ASIA LTD
 漢申顧問有限公司

DRG. NO. **FIGURE 5-6**

DATE: 23/01/97
 SCALE: 1:500
PRELIMINARY

haunsell

- LEGEND:**
- EXISTING STORMWATER DRAINAGE
 - EXISTING FOUL SEWERAGE
 - EXISTING STORMWATER MANHOLE
 - EXISTING FOUL SEWERAGE MANHOLE
 - EXISTING CATCHPIT
 - EXISTING DRAINAGE RESERVE



DATE	DESCRIPTION	BY	CHKD
FIRST ISSUE		AC	CW
		AC	CW

ENVIRONMENTAL PROTECTION DEPARTMENT

FEASIBILITY STUDY FOR PROVIDING NOISE MITIGATION MEASURES ON EXISTING FLYOVERS







TSING TSUEN BRIDGE EXISTING LAYOUT OF DRAINAGE AND SEWERAGE (Sheet 5-7)

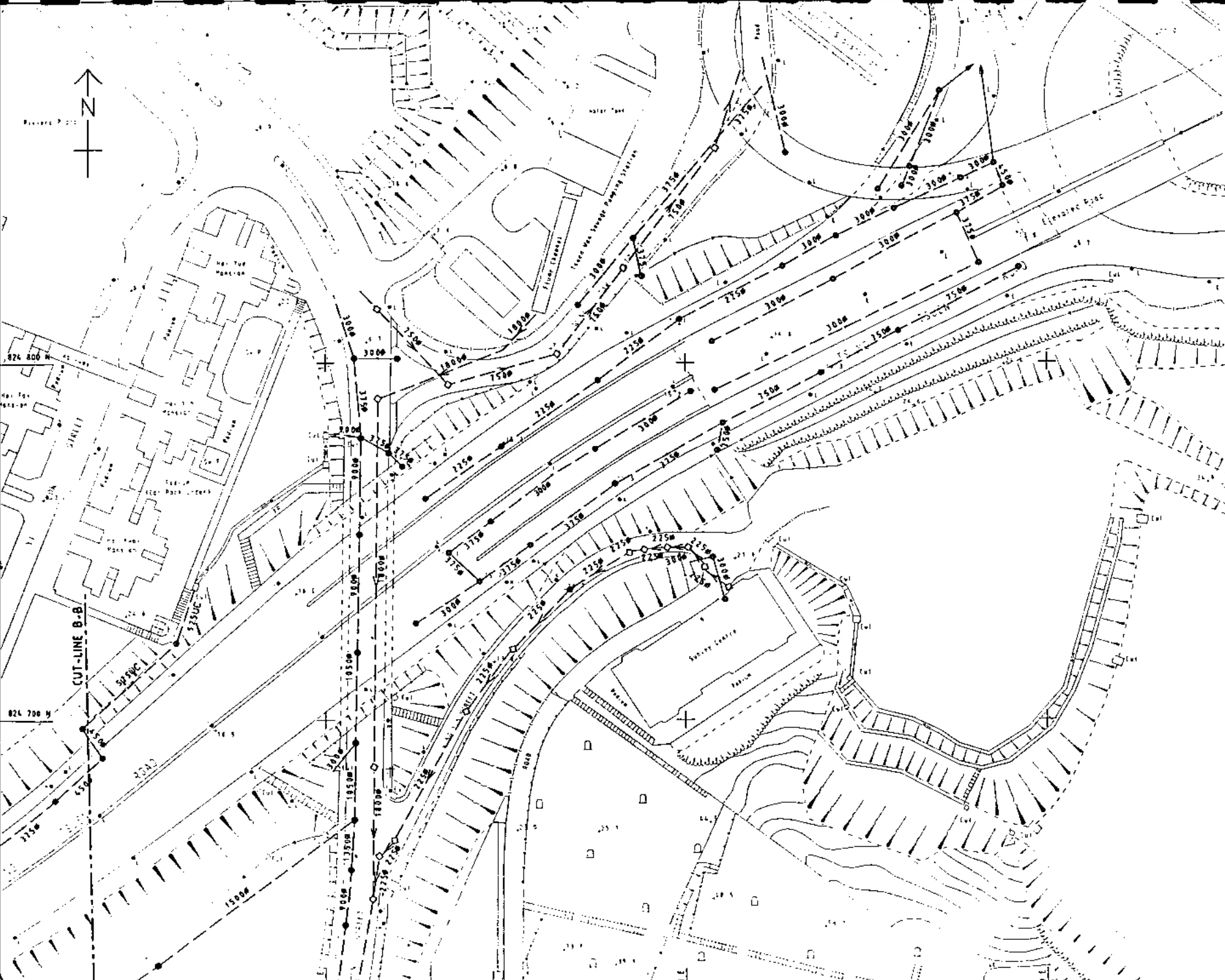
MANSELL CONSULTANTS ASIA LTD
 及 曼 德 烈 土 建 師 事 務 有 限 公 司

DRG. NO. **FIGURE 5-7**

DATE: AC
 SCALE: 1:500
 PROJECT: CE 95/11
 SHEET NO.: PRELIMINARY

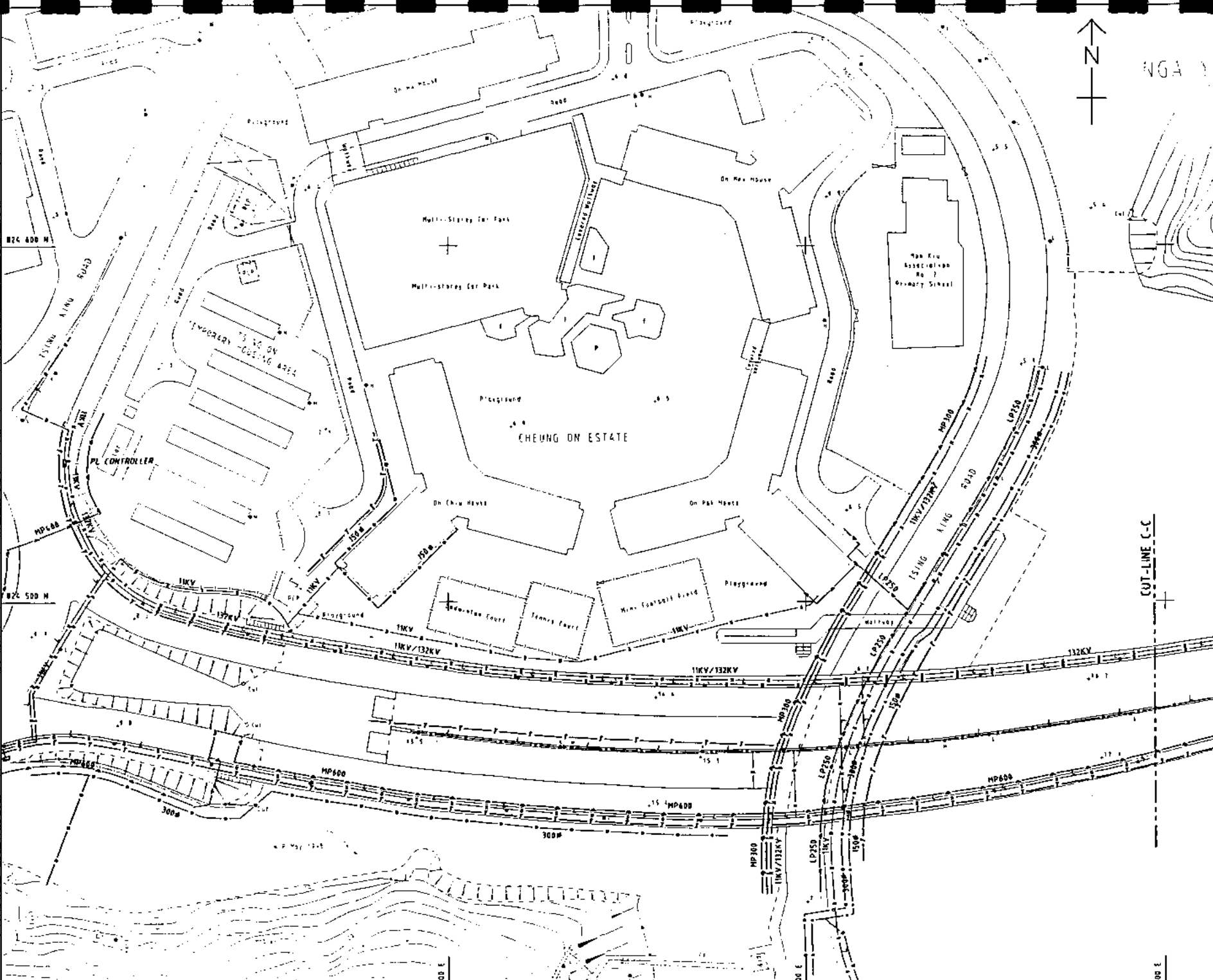
Mansell

- LEGEND:**
-  EXISTING STORMWATER DRAINAGE
 -  EXISTING FOUA SEWERAGE
 -  EXISTING STORMWATER MANHOLE
 -  EXISTING FOUA SEWERAGE MANHOLE
 -  EXISTING CATCHPIT
 -  DRAINAGE RESERVE



REVISED	NO.	BY	DATE
ENVIRONMENTAL PROTECTION DEPARTMENT			
FEASIBILITY STUDY FOR PROVIDING NOISE MITIGATION MEASURES ON EXISTING FLYOVERS			
TSING TSUEN BRIDGE EXISTING LAYOUT OF DRAINAGE AND SEWERAGE (SHEET 1)			
MAUNSELL CONSULTANTS ASIA LTD 馬敏思顧問有限公司			
DRG. NO.	FIGURE	5-7	
SCALE	DATE		
PRELIMINARY			

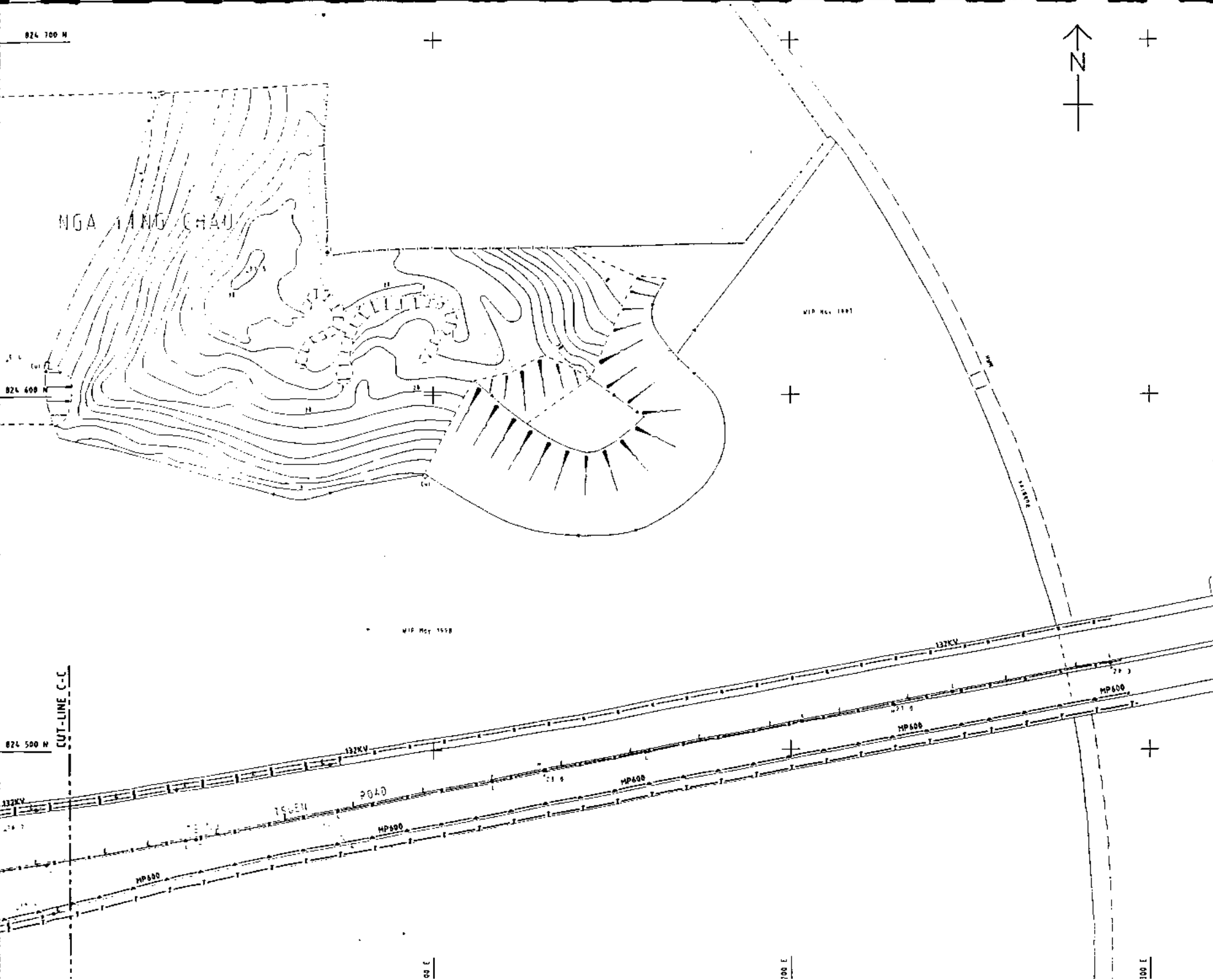
maunsell



- LEGEND:**
- WATERSUPPLY**
- EXISTING FRESH WATER SUPPLY
 - EXISTING SALT WATER SUPPLY
- ELECTRICITY**
- 11KV EXISTING HIGH TENSION CABLE
 - EXISTING PUBLIC LIGHTING CABLE
- TELEPHONE**
- EXISTING TELEPHONE DUCT
- GAS**
- EXISTING PRESSURE GASMAIN

FIRST ISSUE		AC	EC	EW	FF
DATE	BY	DATE	BY	DATE	BY
ENVIRONMENTAL PROTECTION DEPARTMENT					
FEASIBILITY STUDY FOR PROVIDING NOISE MITIGATION MEASURES ON EXISTING FLYOVERS					
TSING TSUEN BRIDGE EXISTING LAYOUT OF UTILITIES AND SERVICES					
(S-307)					
MAUNSELL CONSULTANTS ASIA LTD 馬善士顧問有限公司					
DRC. NO. FIGURE 5-8					
Scale: 1:500 Date: 11/9/91	Drawing No: EE 95/91 Sheet No: 1/1	PRELIMINARY			

Maunsell



- LEGEND.**
- WATERSUPPLY**
 - EXISTING FRESH WATER SUPPLY
 - EXISTING SALT WATER SUPPLY
 - ELECTRICITY**
 - |—|— 11KV EXISTING HIGH TENSION CABLE
 - |—|— EXISTING PUBLIC LIGHTING CABLE
 - TELEPHONE**
 - |—|— EXISTING TELEPHONE DUCT
 - GAS**
 - ▲—▲— EXISTING PRESSURE GASMAIN

NO.	DATE	BY	CHKD	APPD
1	1998	AC	AC	EW
2	1998	EW	AC	EW
ENVIRONMENTAL PROTECTION DEPARTMENT				
FEASIBILITY STUDY FOR PROVIDING NOISE MITIGATION MEASURES ON EXISTING FLYOVERS				
TSING TSUEN BRIDGE EXISTING LAYOUT OF UTILITIES AND SERVICES				
(SHEET 2)				
MAUNSELL CONSULTANTS ASIA LTD 馬敏申顧問有限公司				
DRG. NO.		FIGURE 5-8		
NO.	DATE	BY	CHKD	APPD
1	1998	AC	EW	EW
2	1998	EW	AC	EW
PRELIMINARY				

maunsell