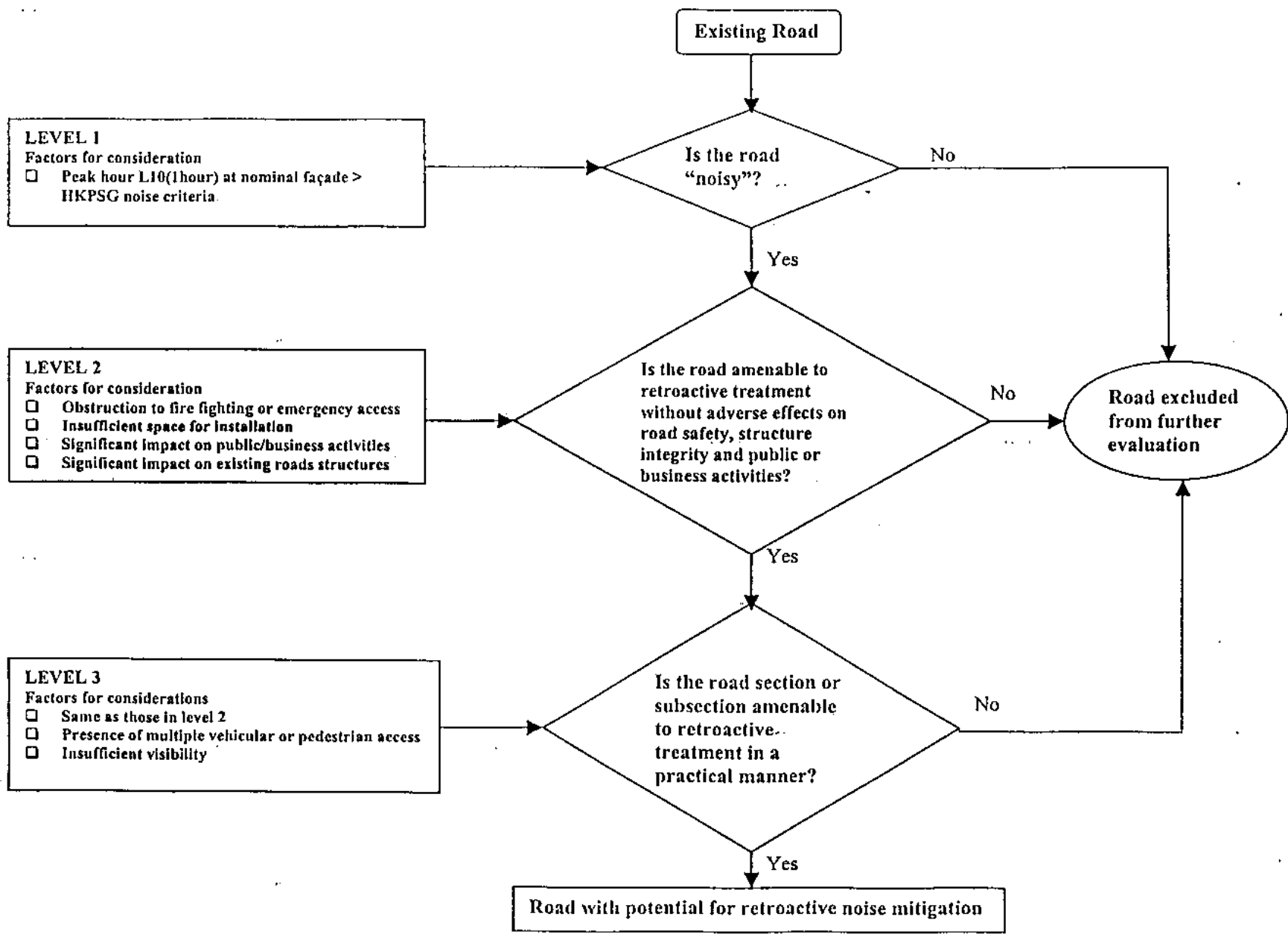
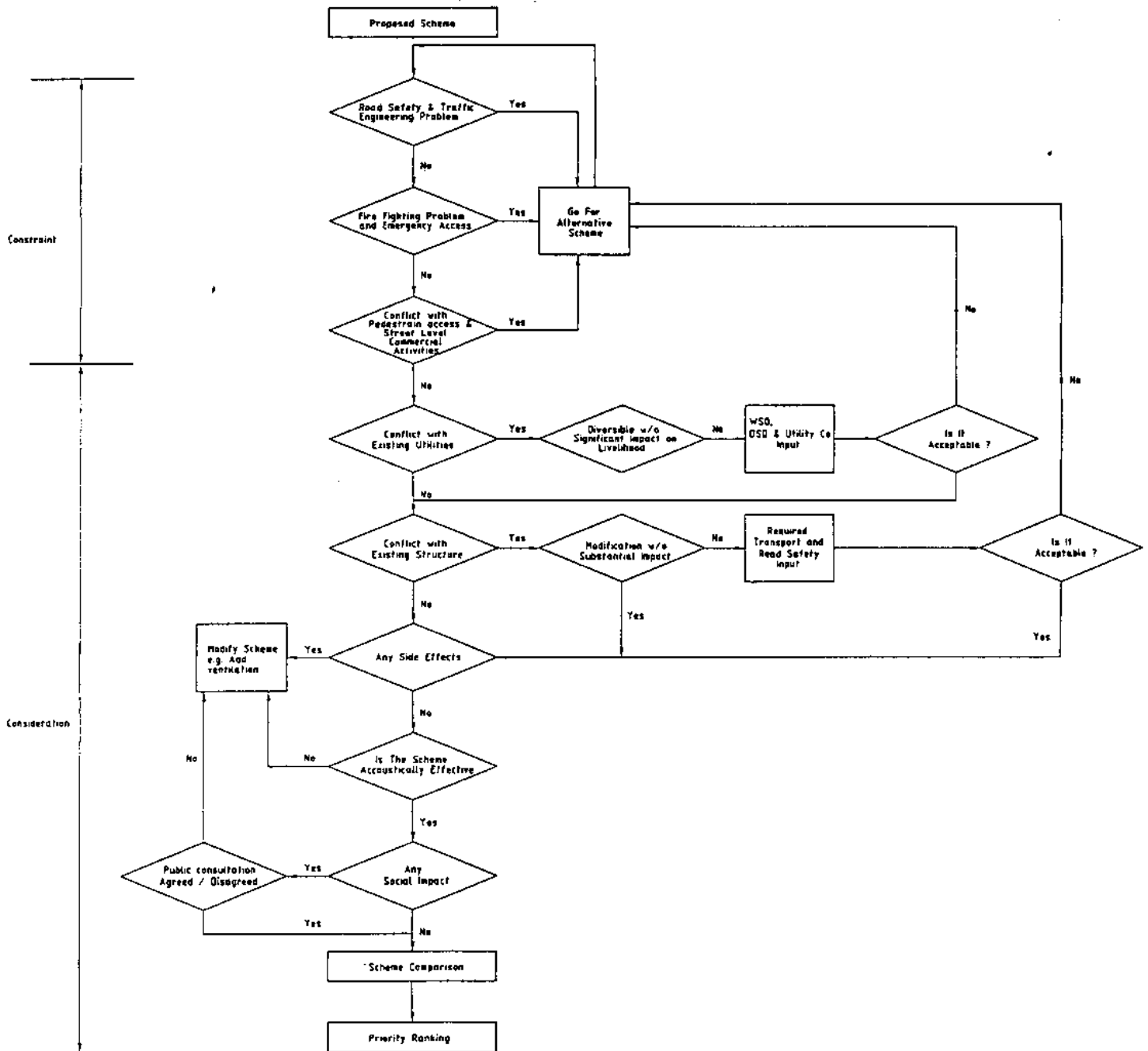
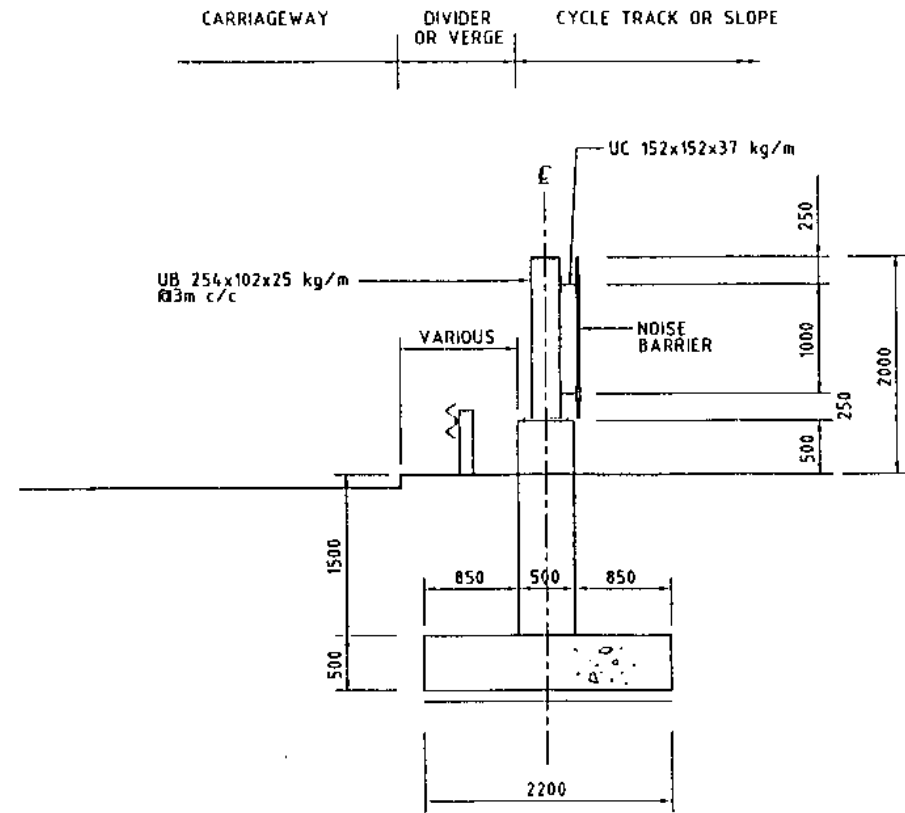




FIGURES

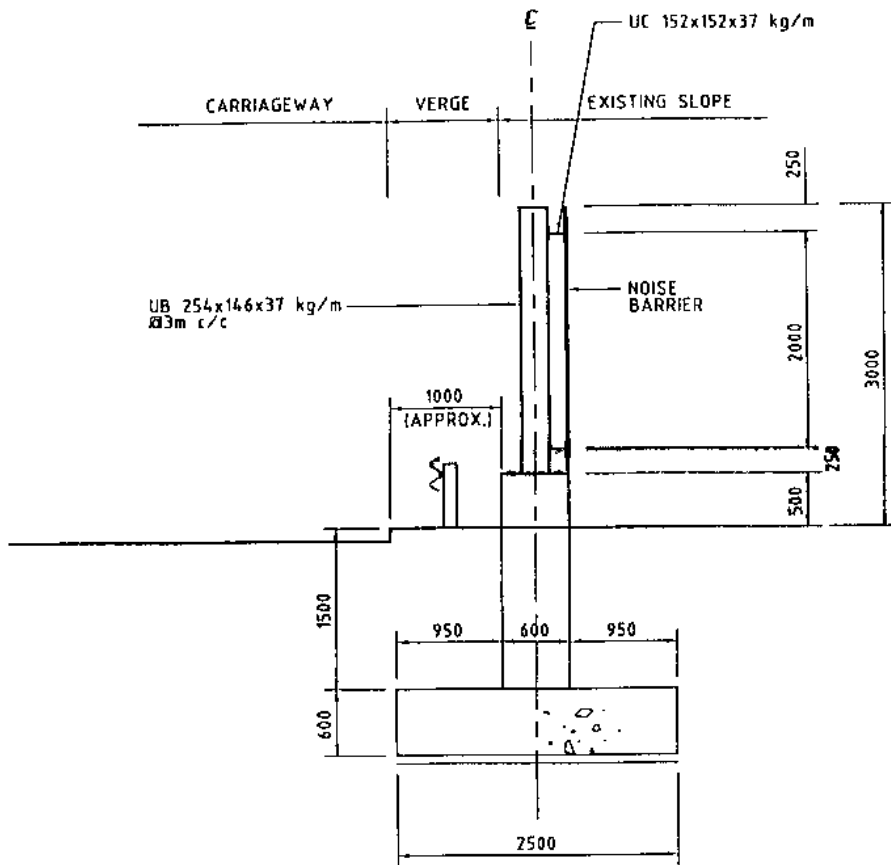




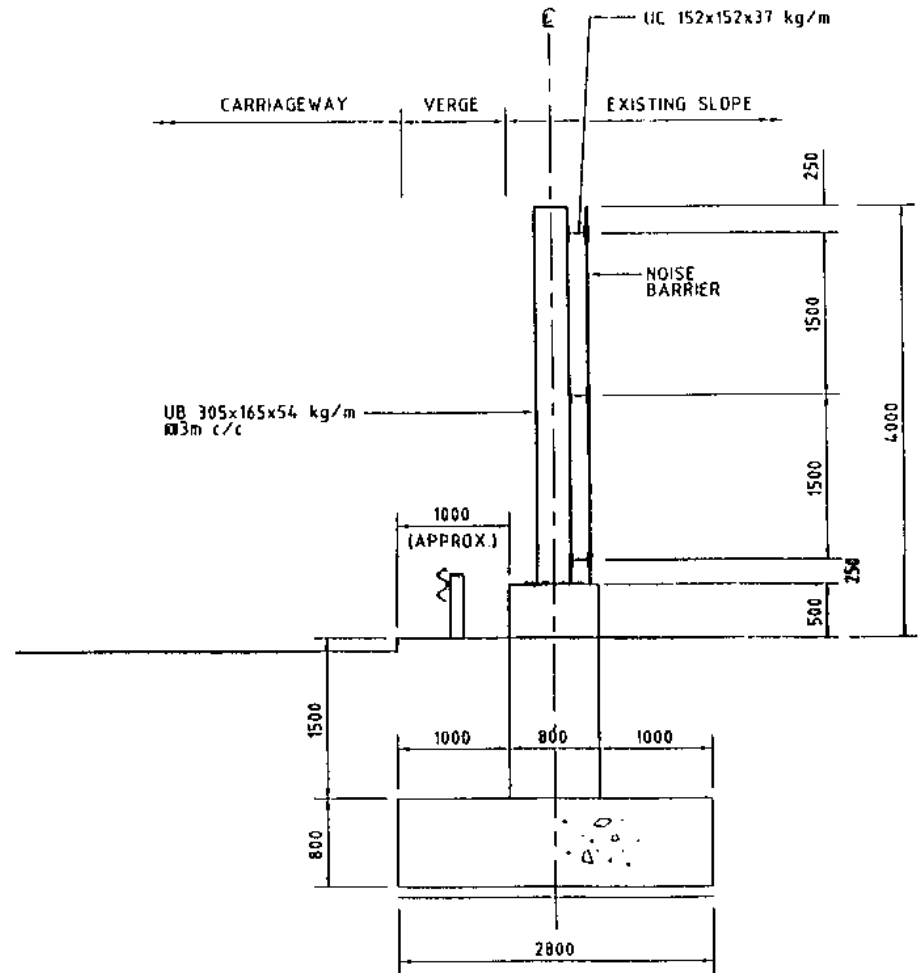


2-METRE PLAIN BARRIER
ON SPREAD FOOTING

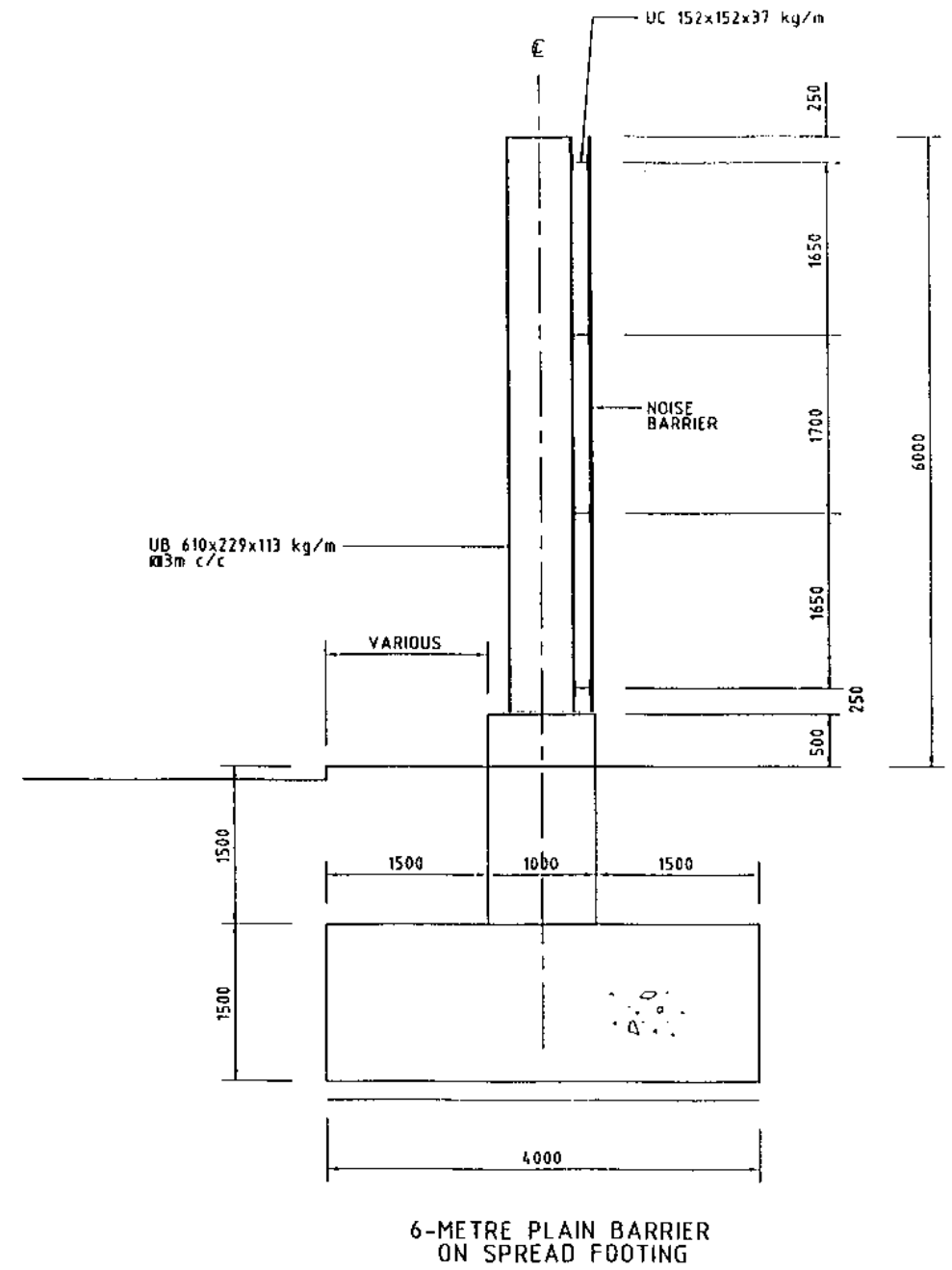
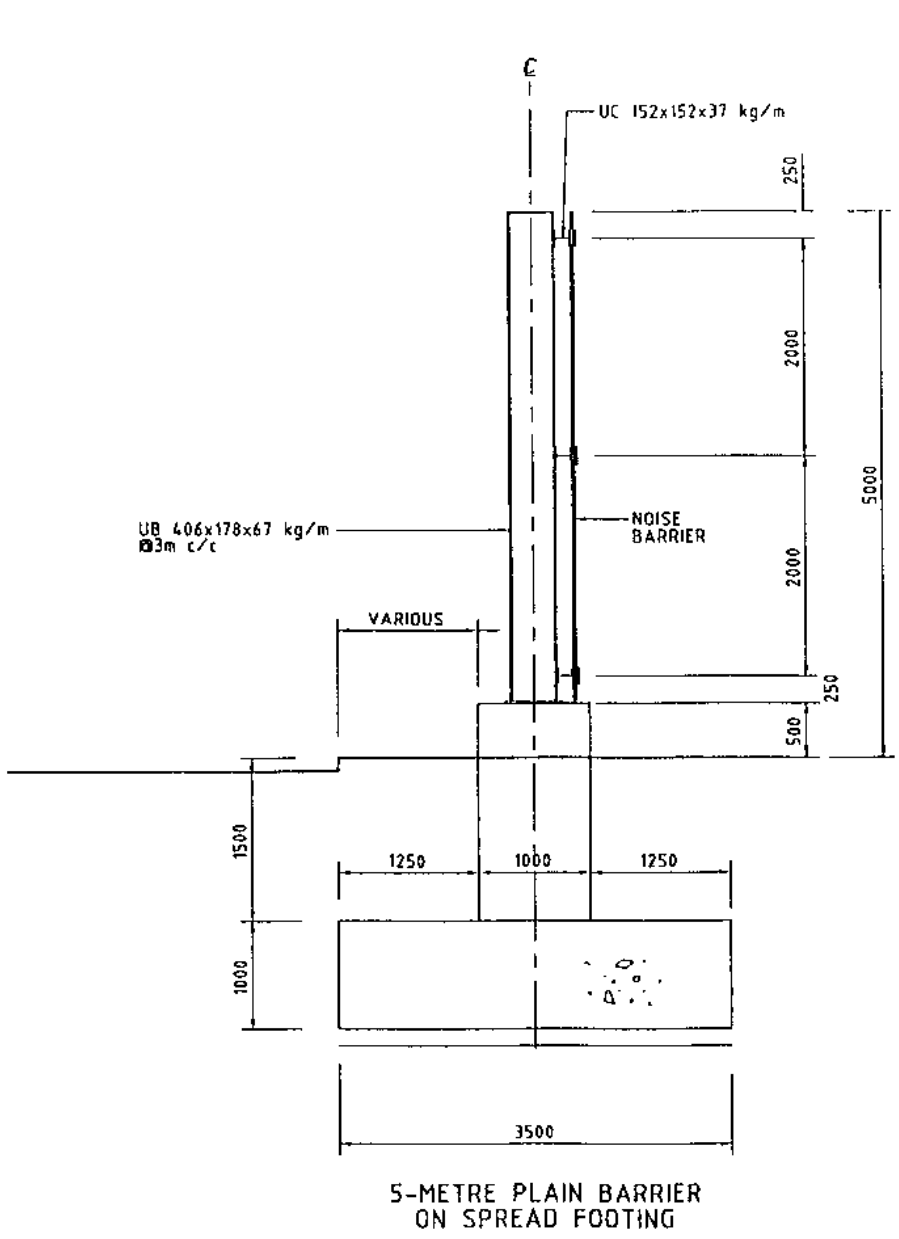
<p>FEASIBILITY STUDY FOR PROVIDING RETROACTIVE ROAD TRAFFIC NOISE MITIGATION MEASURES</p> <p>TYPICAL NOISE BARRIER SECTIONS</p> <p style="text-align: right;">. N.T.S</p>	<p>Maunsell 茂盛(亞洲)工程顧問有限公司</p>	<p>JOB NO.: 95796</p>	<p>FIGURE: FIG 2-3</p>
---	---	---------------------------	----------------------------

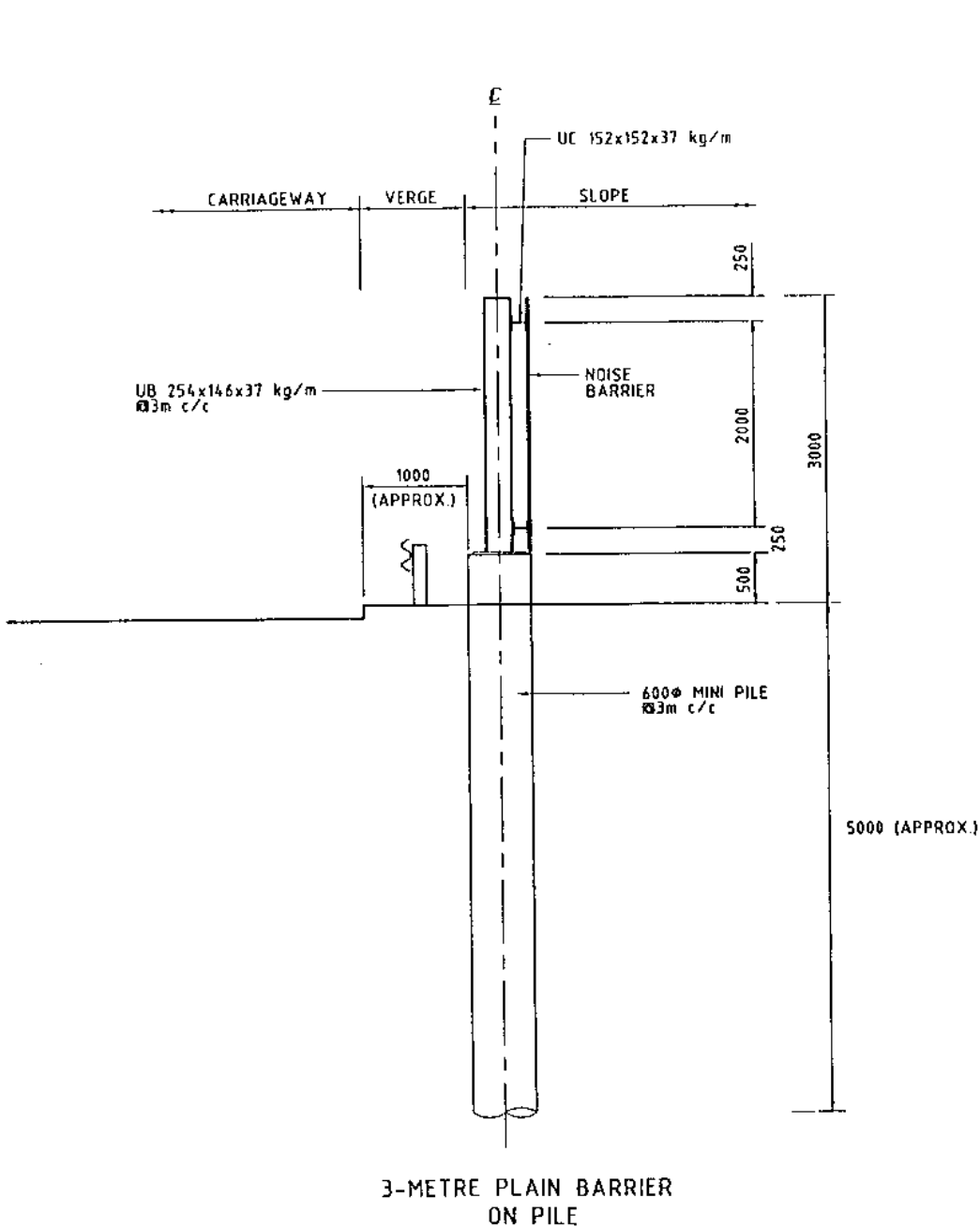


3-METRE PLAIN BARRIER
ON SPREAD FOOTING

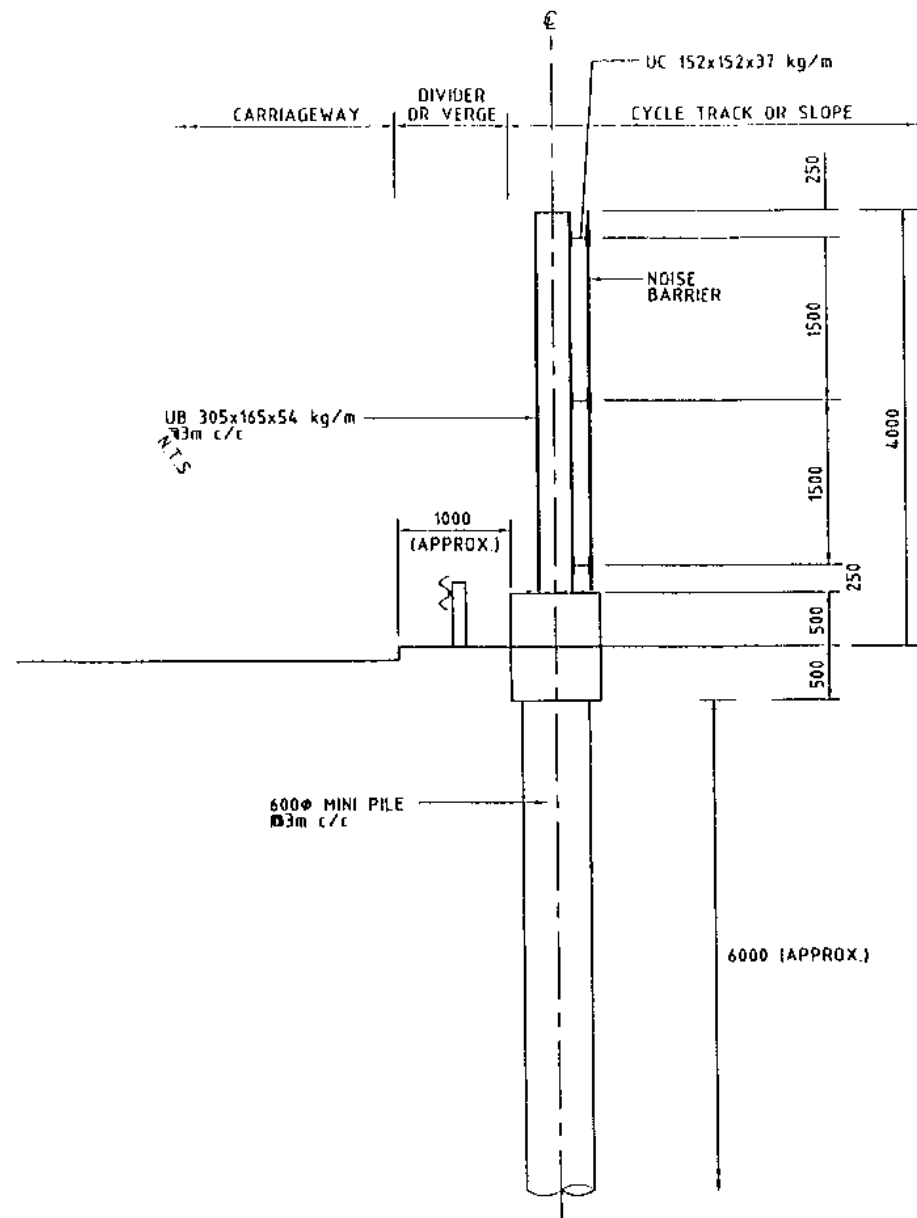


4-METRE PLAIN BARRIER
ON SPREAD FOOTING

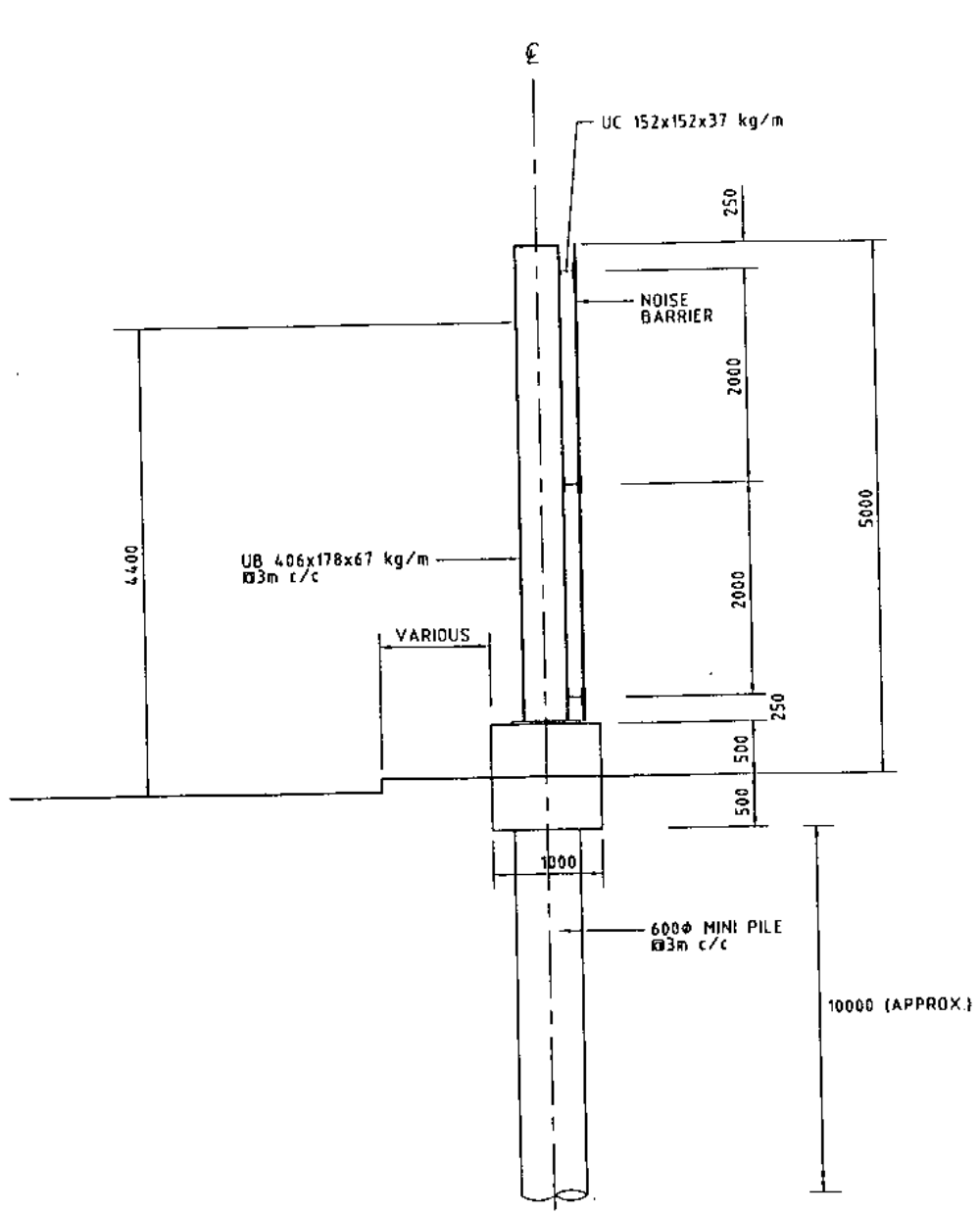




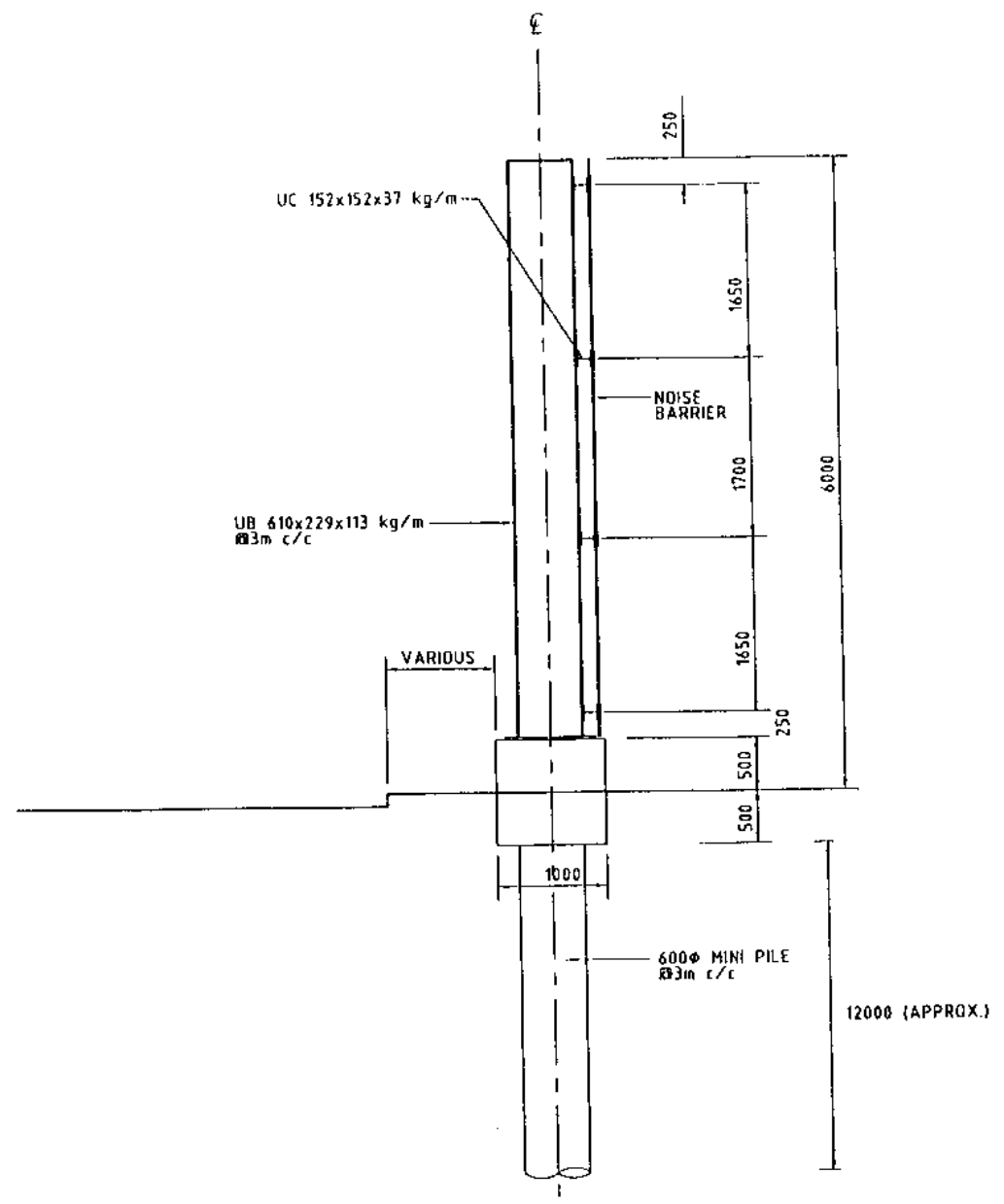
3-METRE PLAIN BARRIER ON PILE



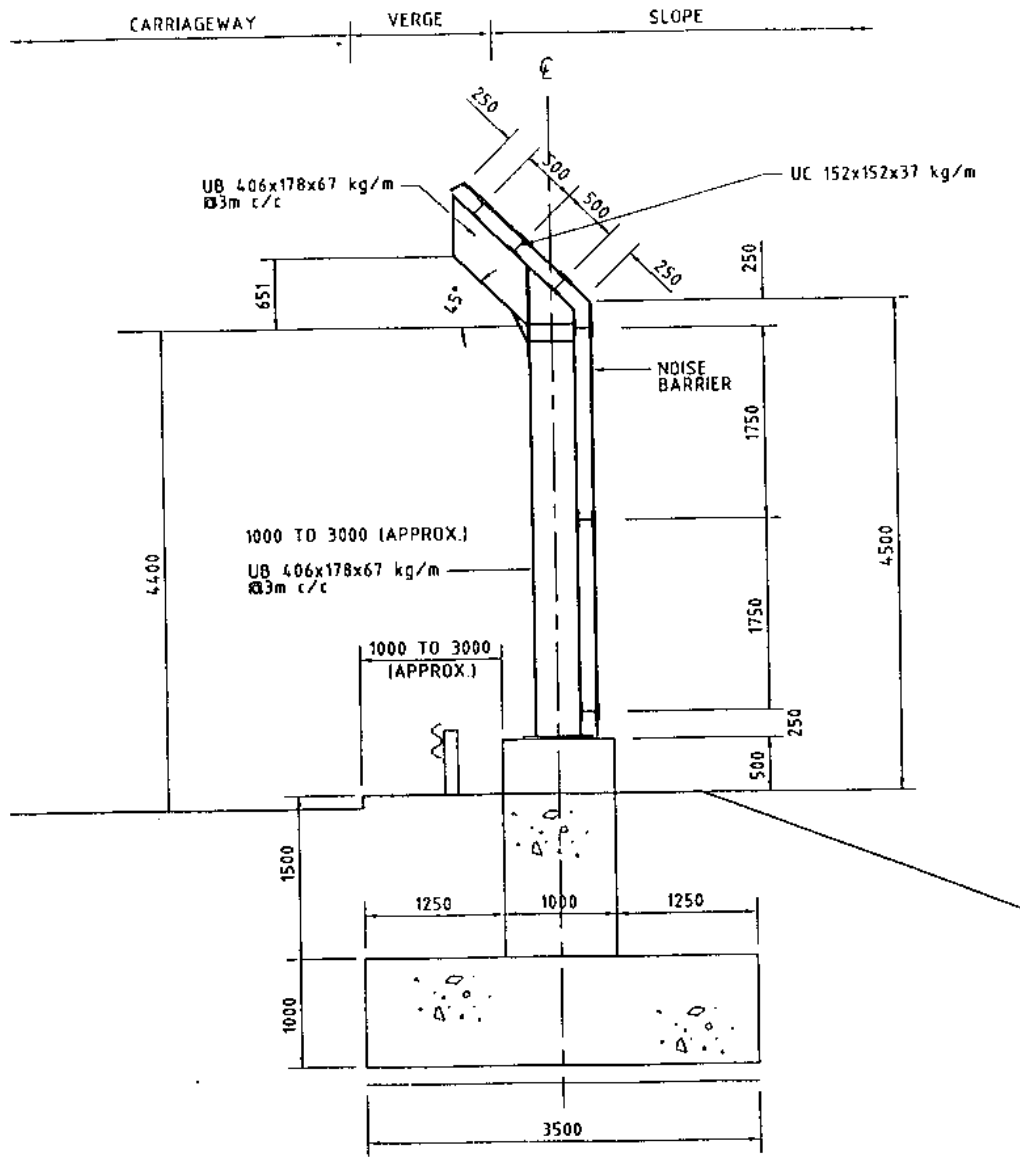
4-METRE PLAIN BARRIER ON PILE



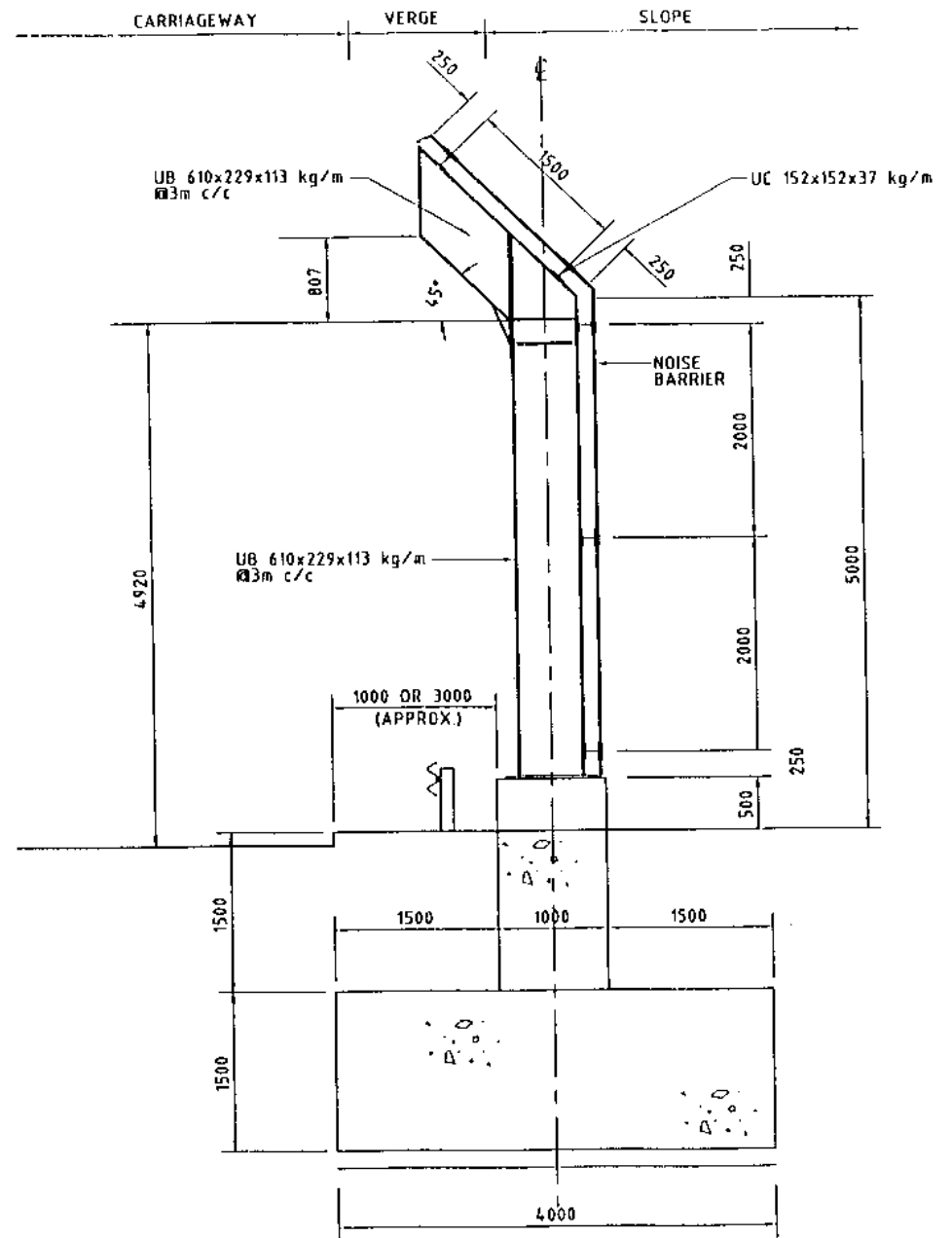
5-METRE PLAIN BARRIER ON PILE



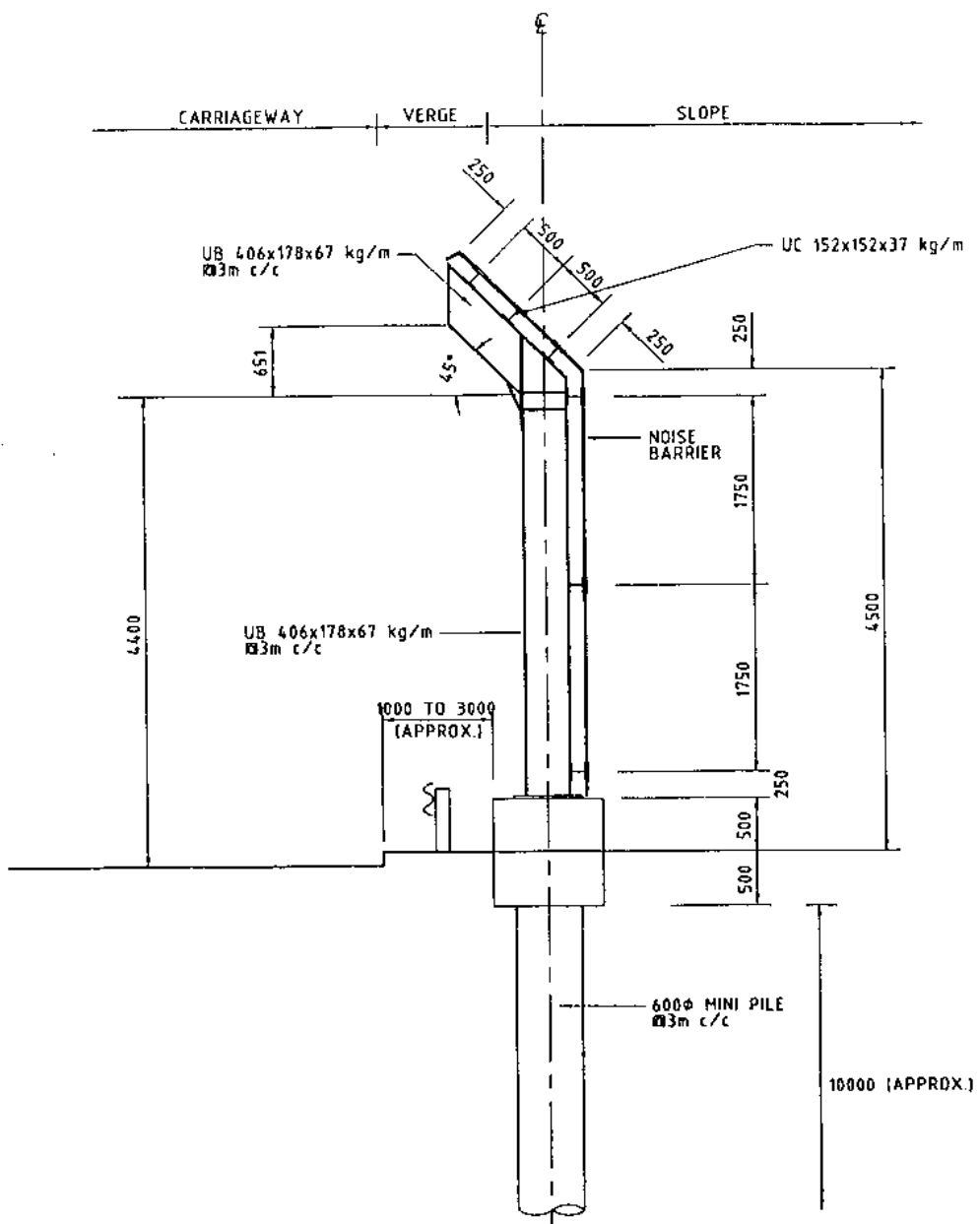
6-METRE PLAIN BARRIER ON PILE



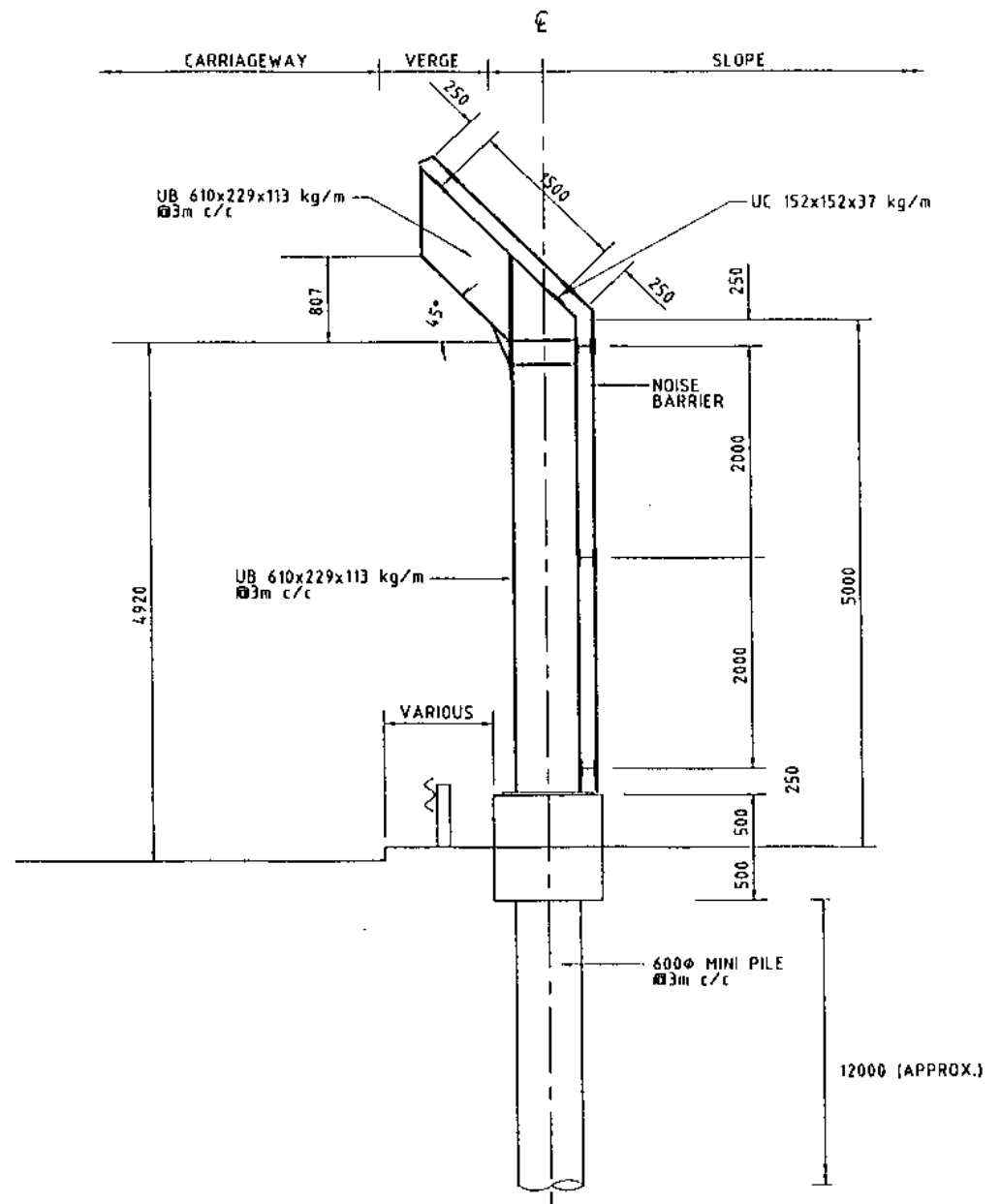
CANTILEVERED BARRIER (TYPE A) (5.6m)
ON SPREAD FOOTING



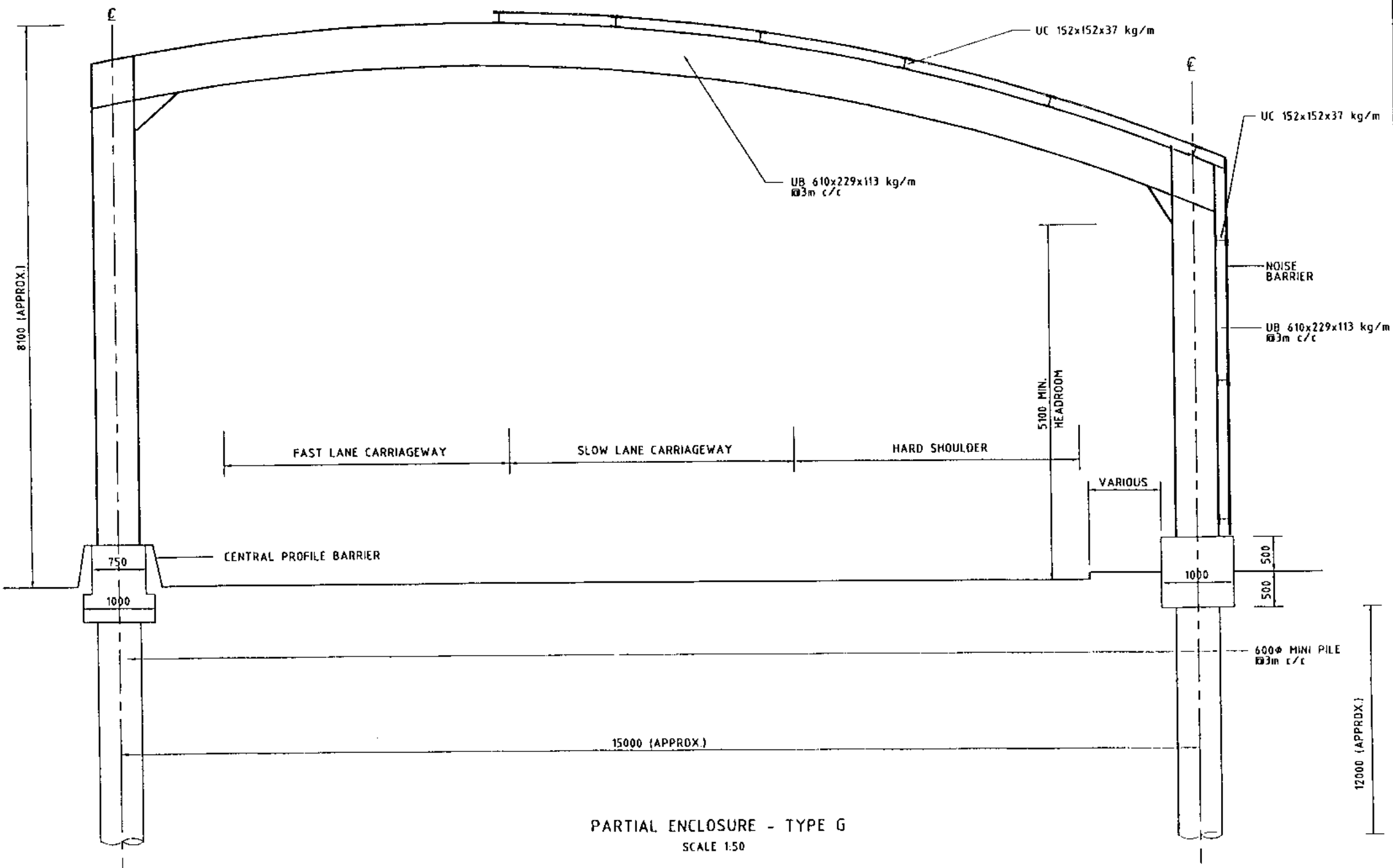
CANTILEVERED BARRIER (TYPE B) (6.4m)
ON SPREAD FOOTING

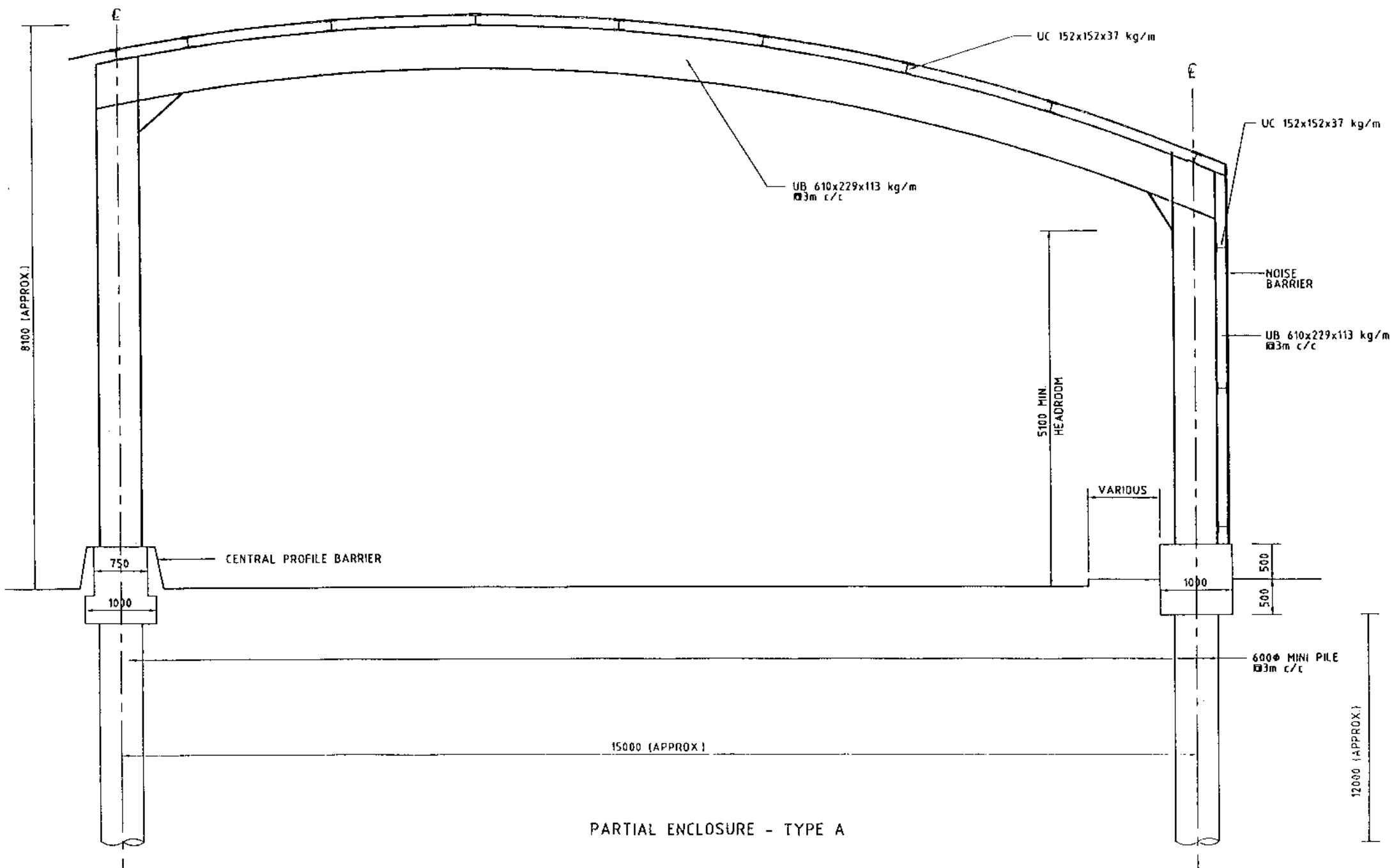


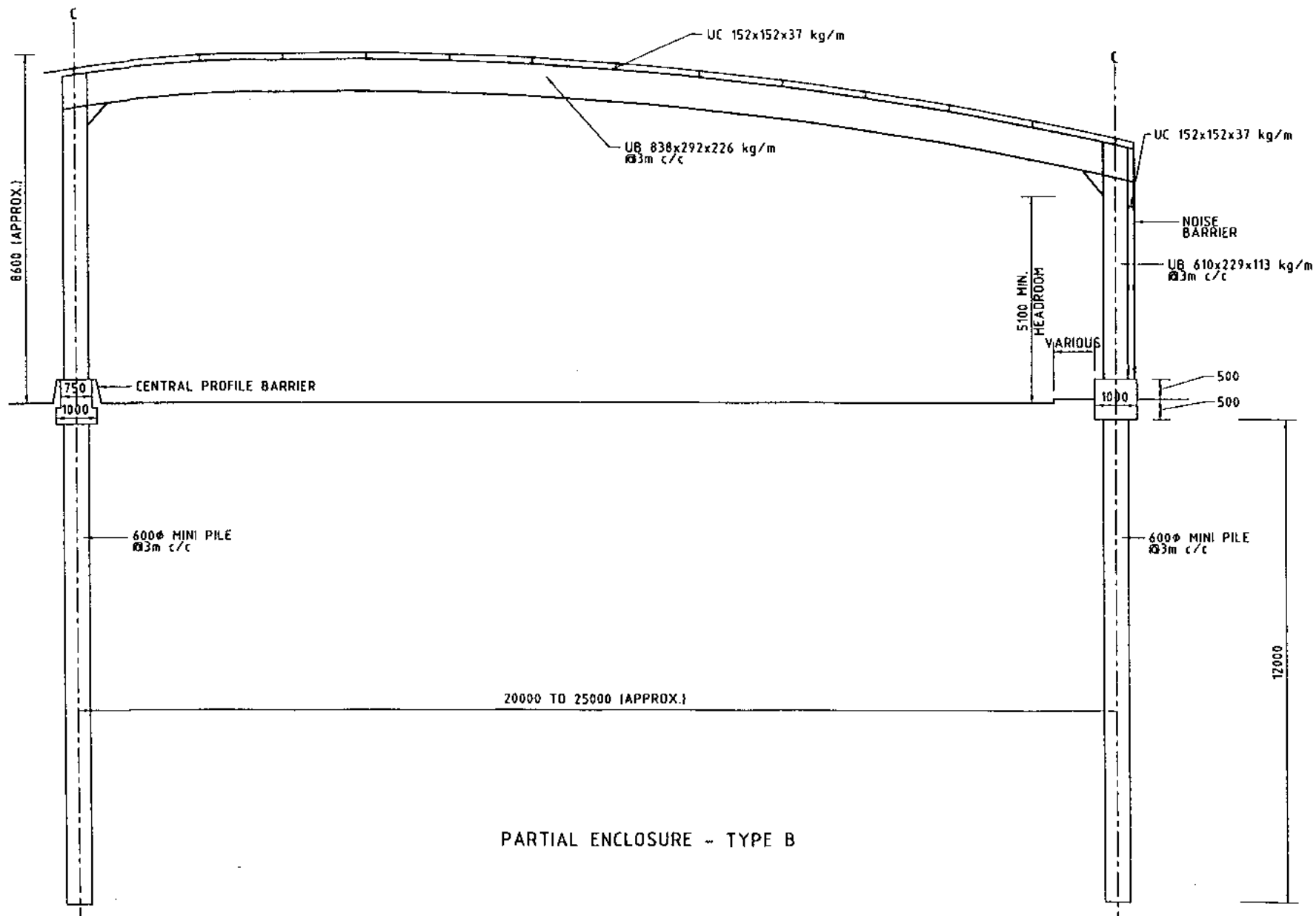
CANTILEVERED BARRIER (TYPE A) (5.6m)
ON PILE



CANTILEVERED BARRIER (TYPE B) (6.4m)
ON PILE







FEASIBILITY STUDY FOR PROVIDING RETROACTIVE ROAD TRAFFIC NOISE MITIGATION MEASURES

TYPICAL NOISE BARRIER SECTIONS

N.T.S

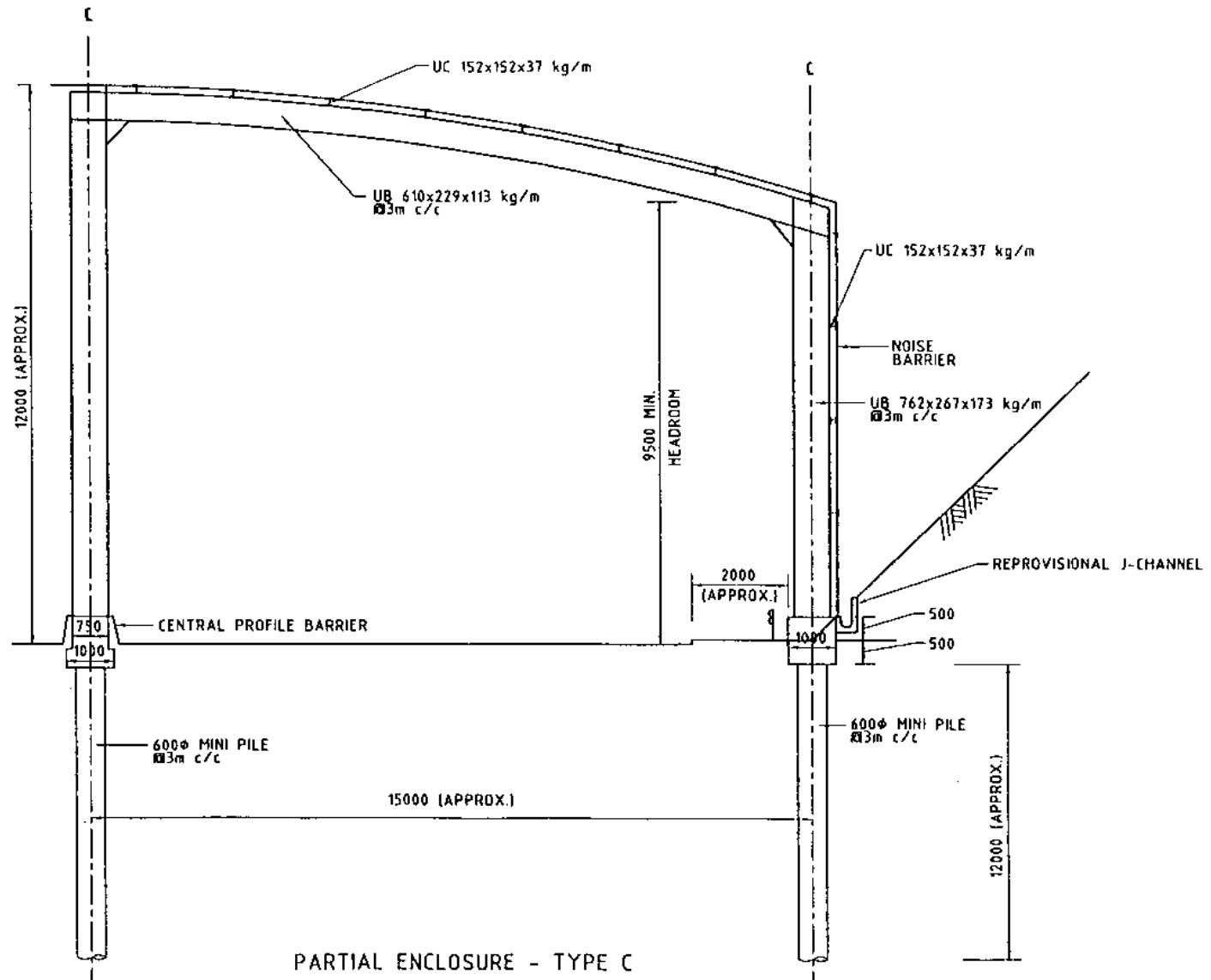
Maunsell
茂盛(亞洲)工程顧問有限公司

JOB NO.:

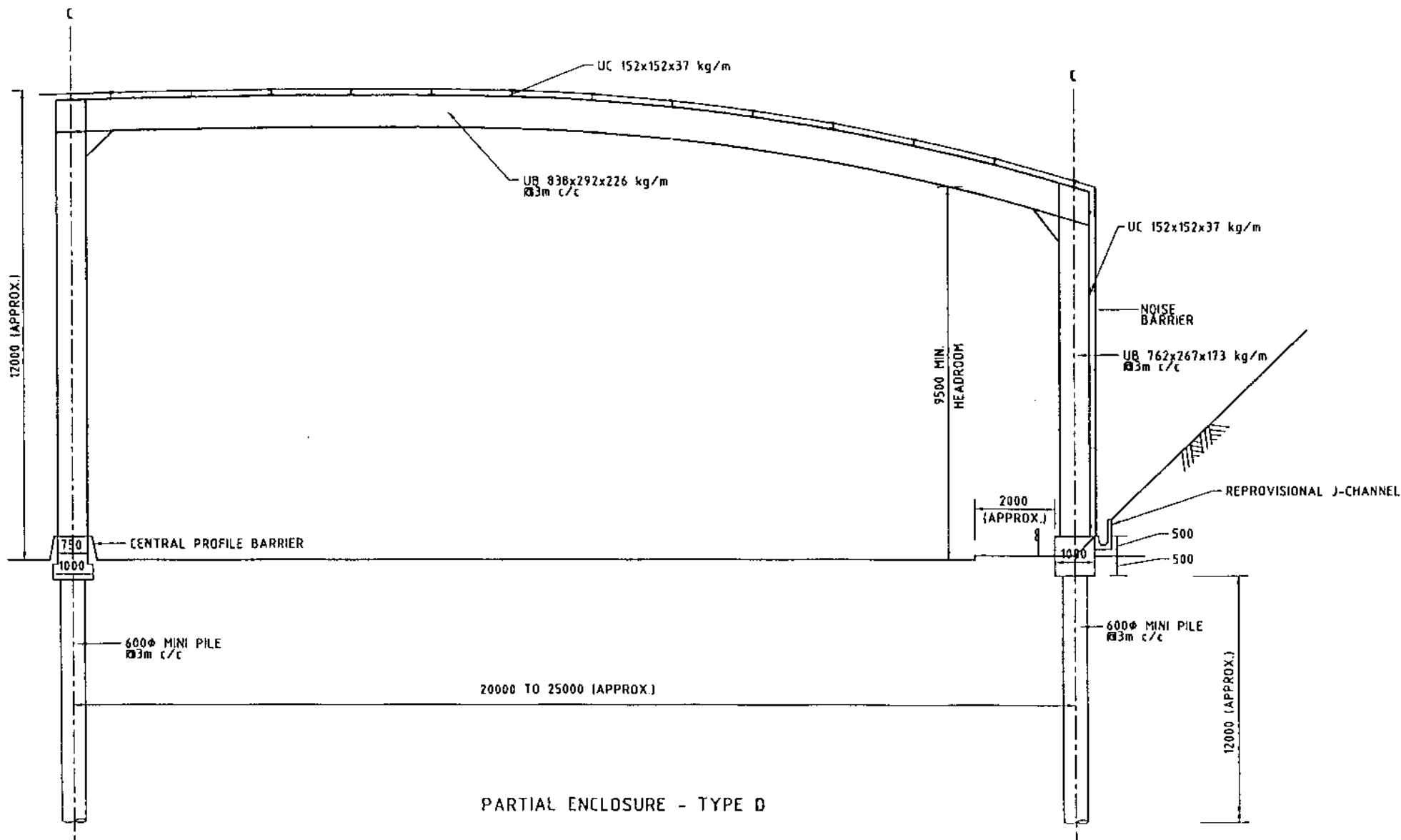
95796

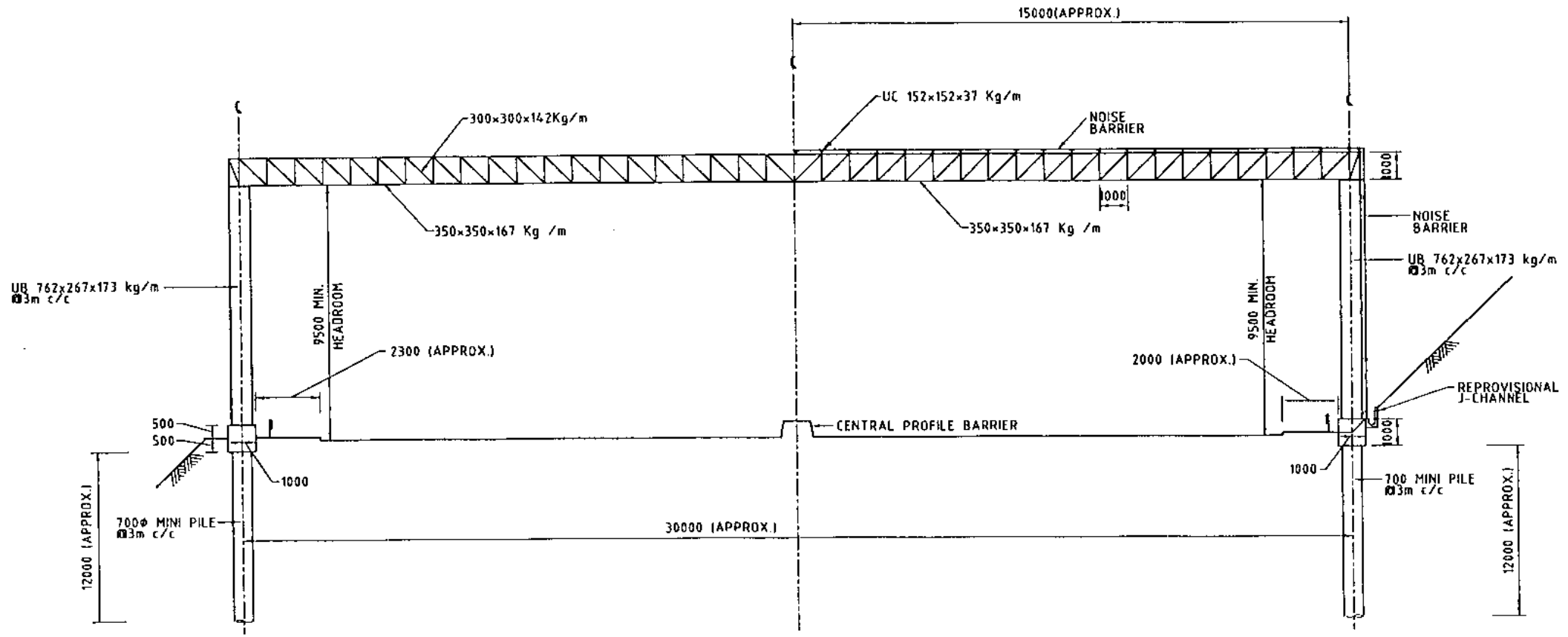
FIGURE:

FIG 2-12

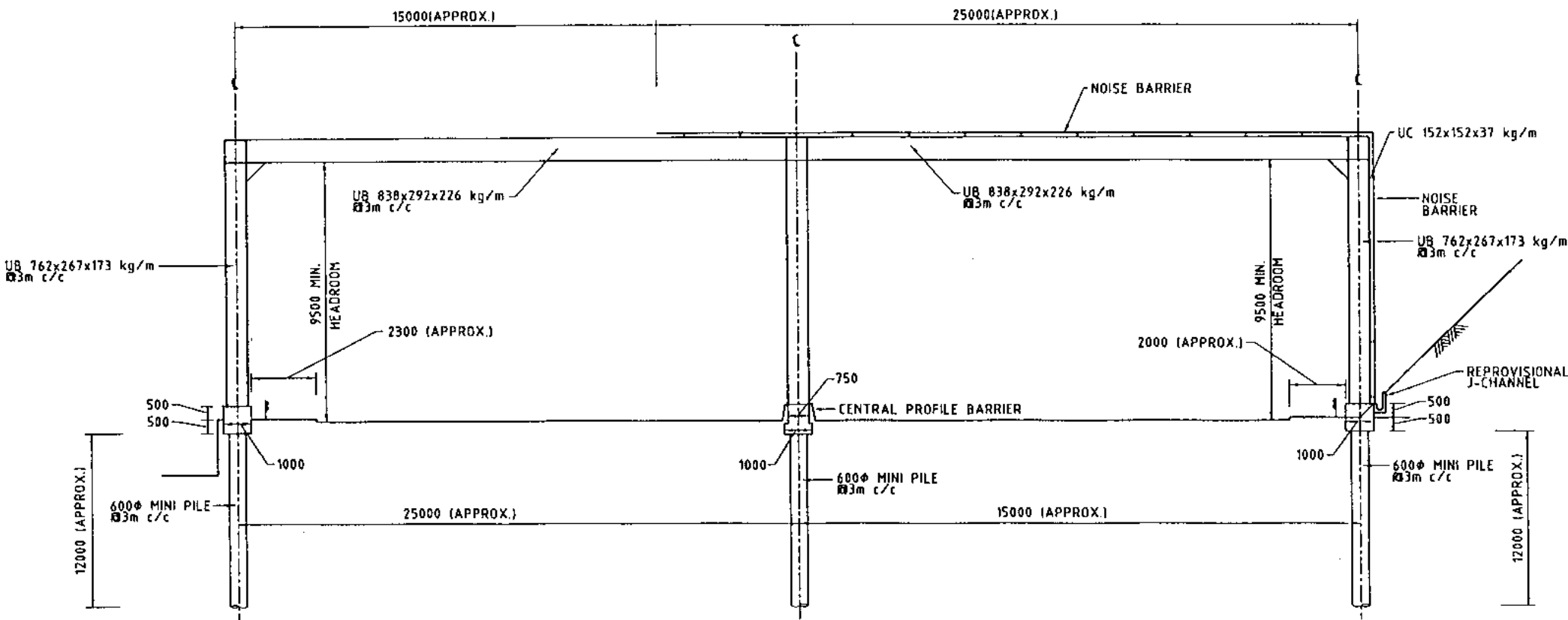


PARTIAL ENCLOSURE - TYPE C

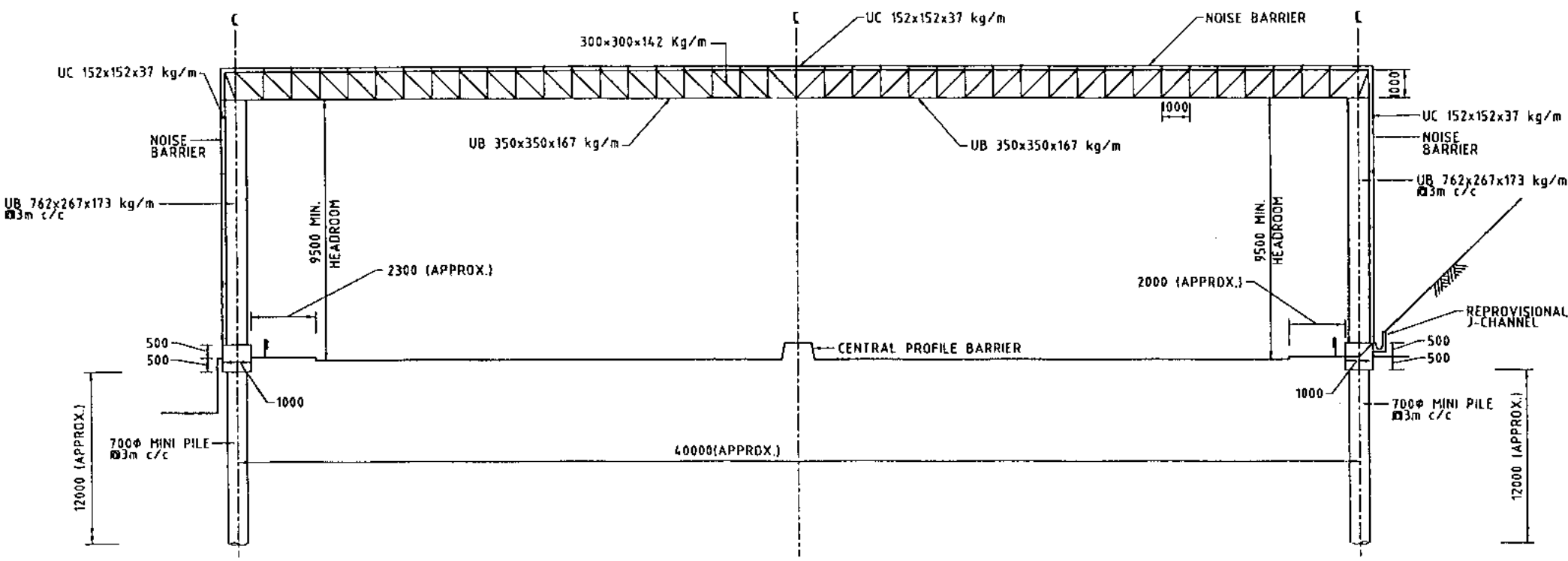




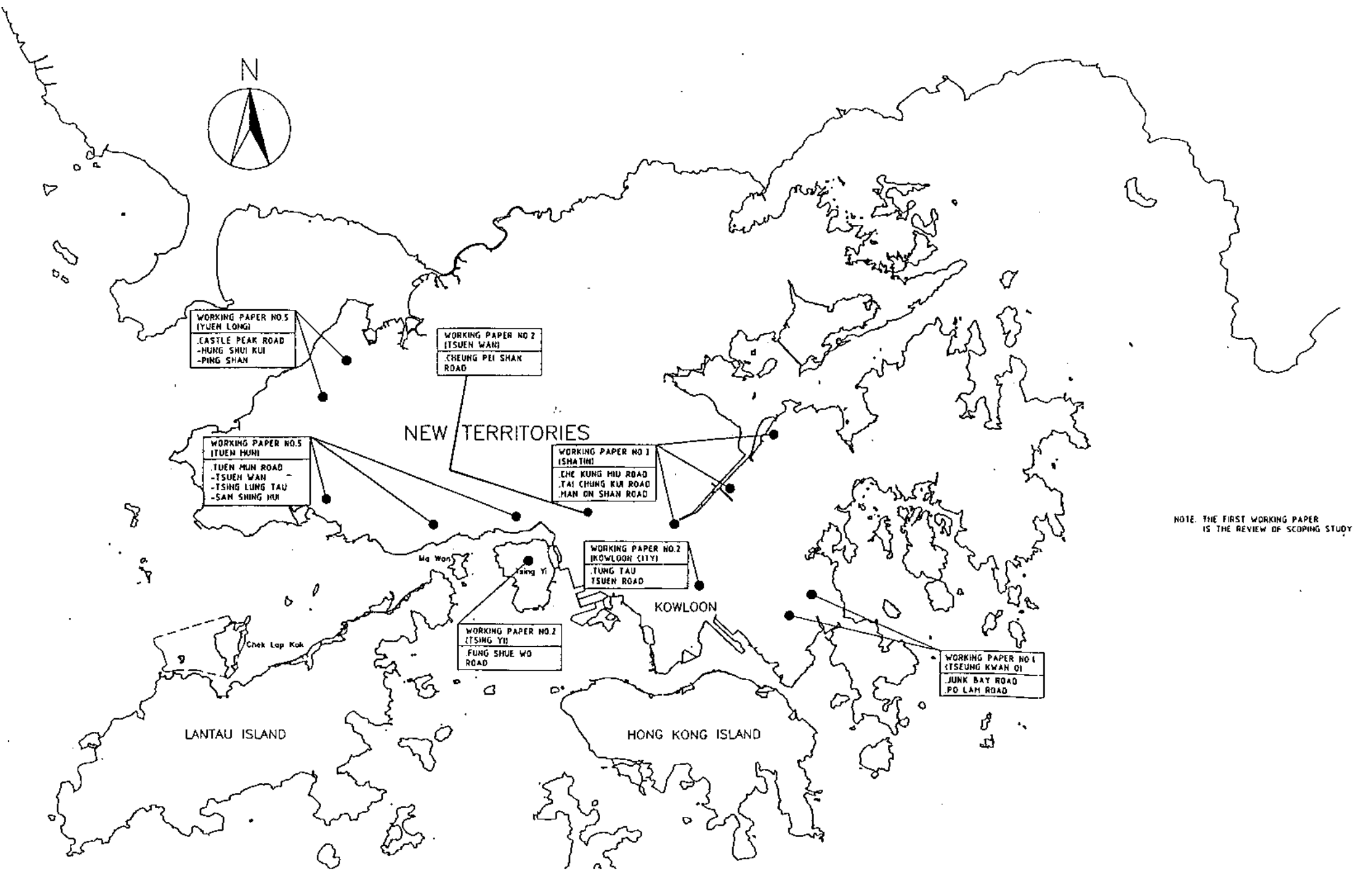
PARTIAL ENCLOSEURE - TYPE E



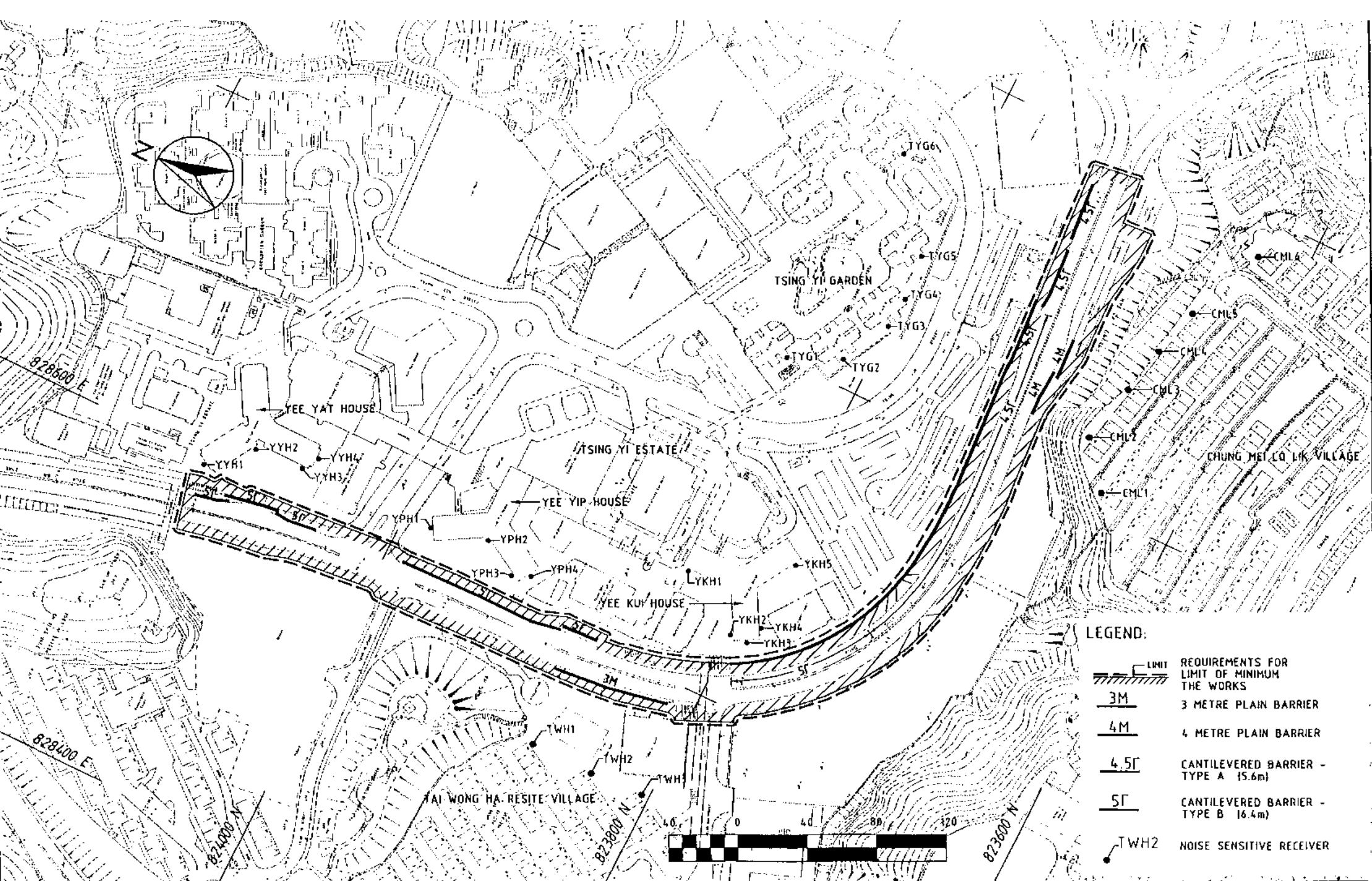
PARTIAL ENCLOSURE - TYPE F



FULL ENCLOSURE

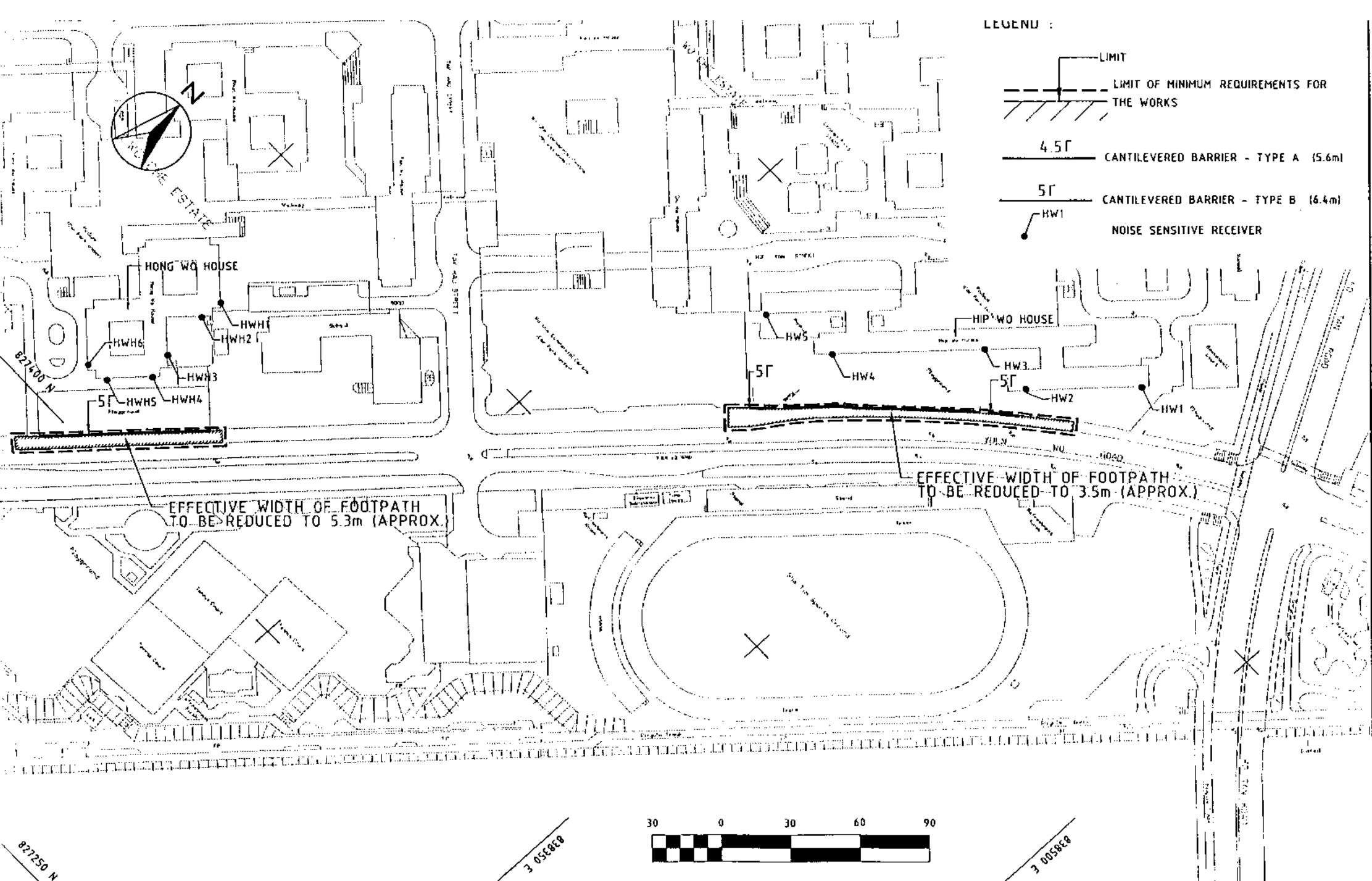


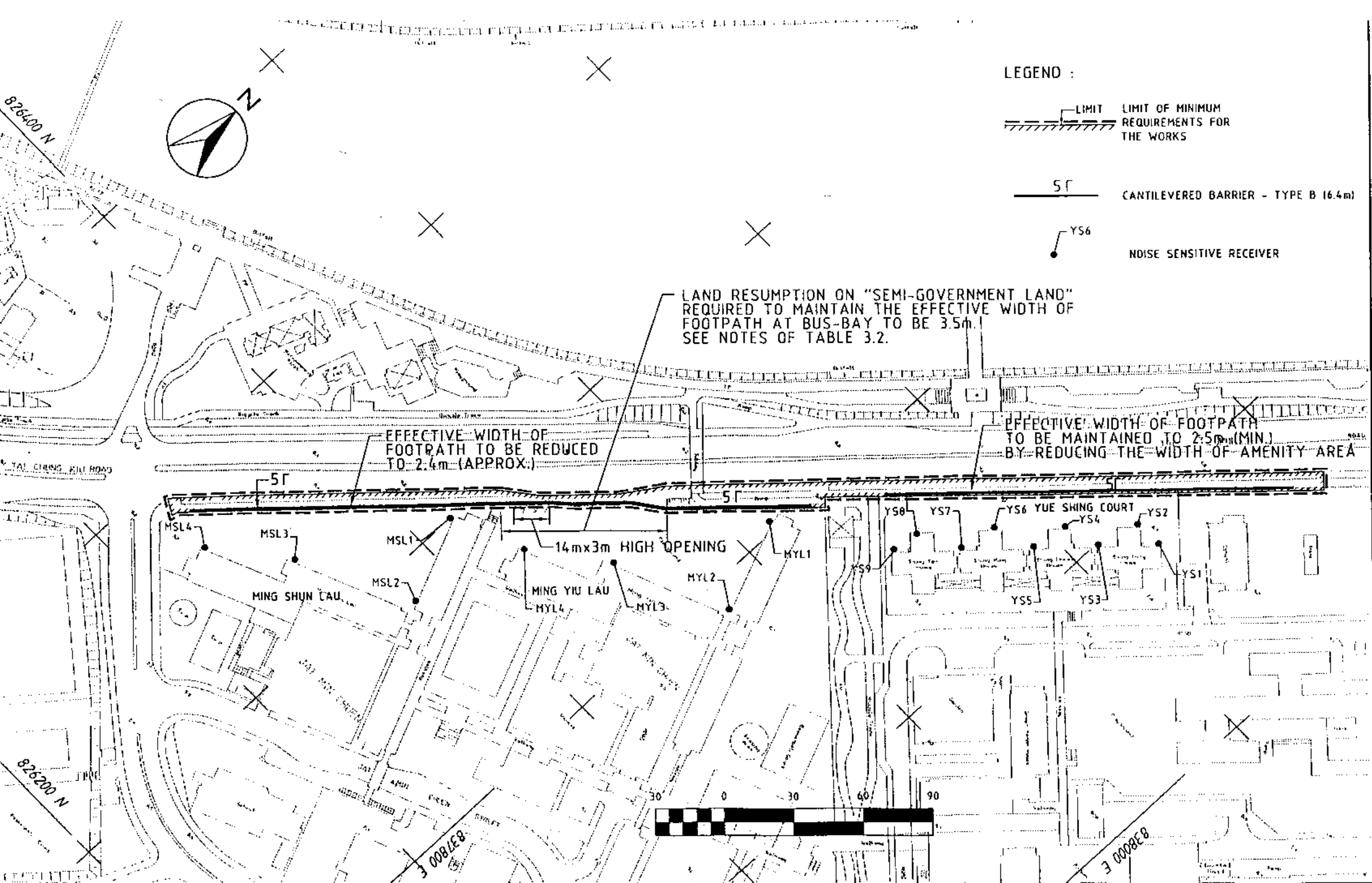
NOTE: THE FIRST WORKING PAPER IS THE REVIEW OF SCOPING STUDY

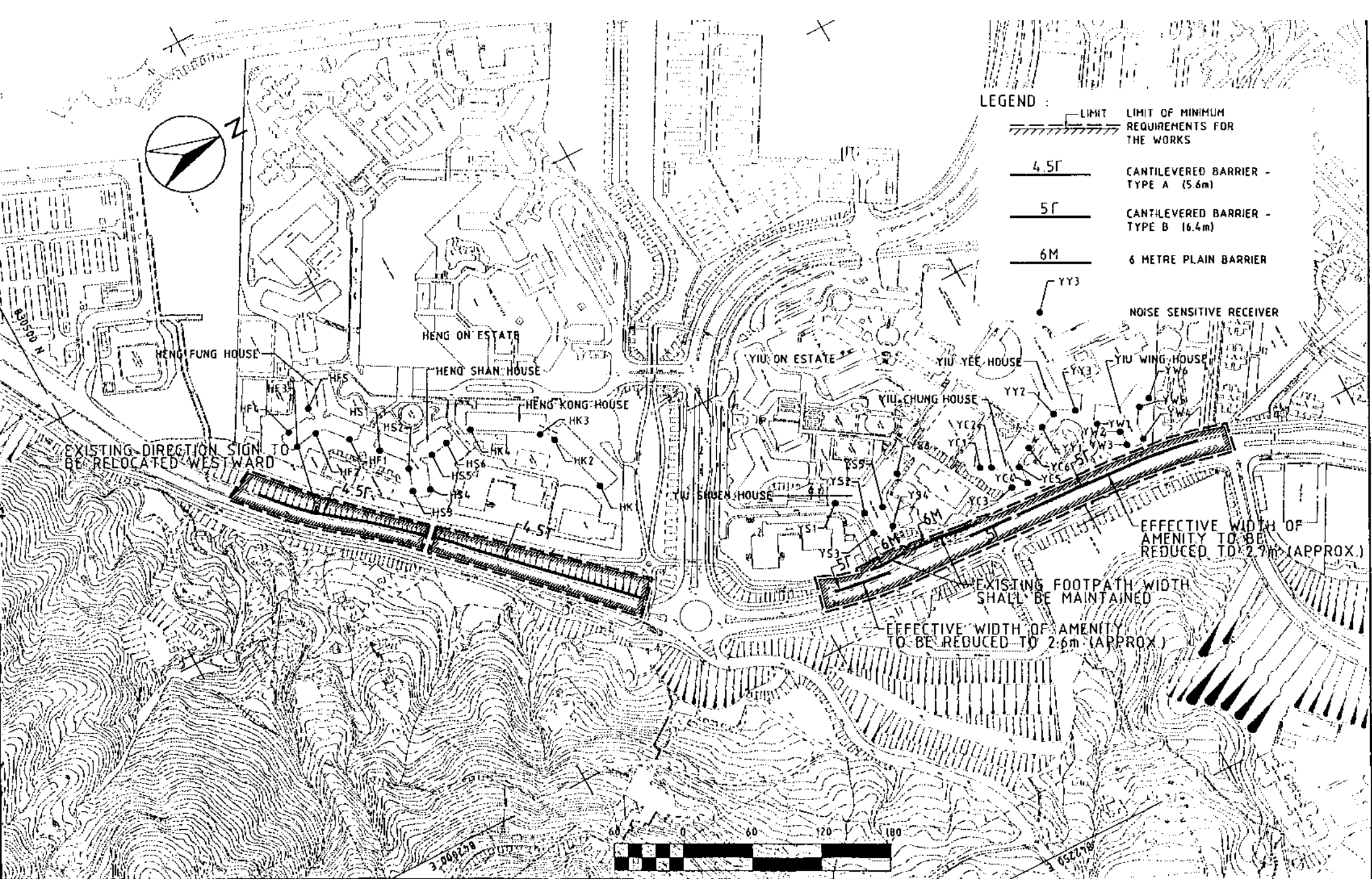


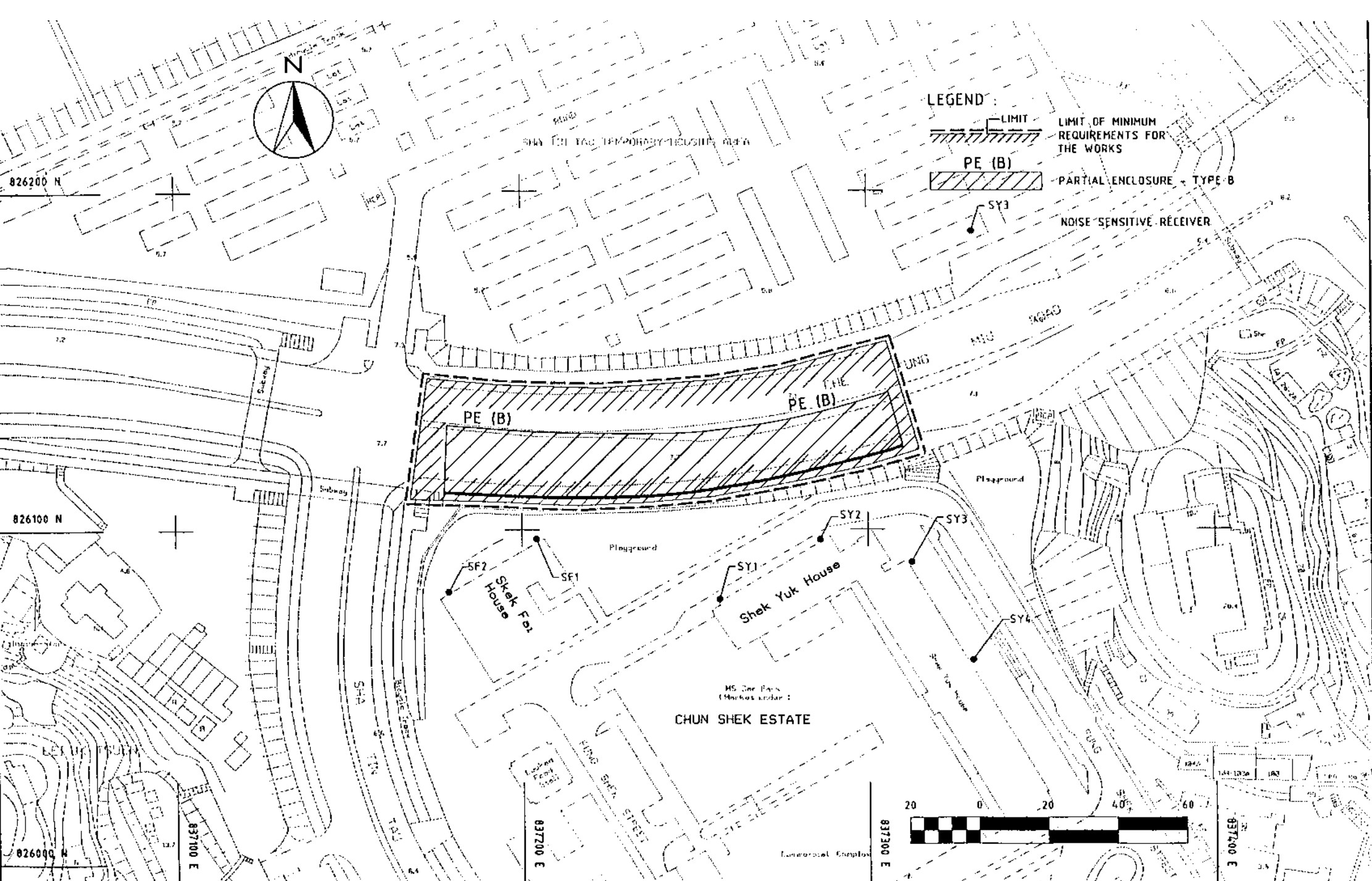
LEGEND:

LIMIT	REQUIREMENTS FOR LIMIT OF MINIMUM THE WORKS
3M	3 METRE PLAIN BARRIER
4M	4 METRE PLAIN BARRIER
4.5M	CANTILEVERED BARRIER - TYPE A (5.6m)
5M	CANTILEVERED BARRIER - TYPE B (6.4m)
TWH2	NOISE SENSITIVE RECEIVER

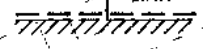
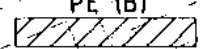









LEGEND:

-  LIMIT
 -  PE (B)
 -  NOISE SENSITIVE RECEIVER
- LIMIT OF MINIMUM REQUIREMENTS FOR THE WORKS
- PARTIAL ENCLOSURE - TYPE B