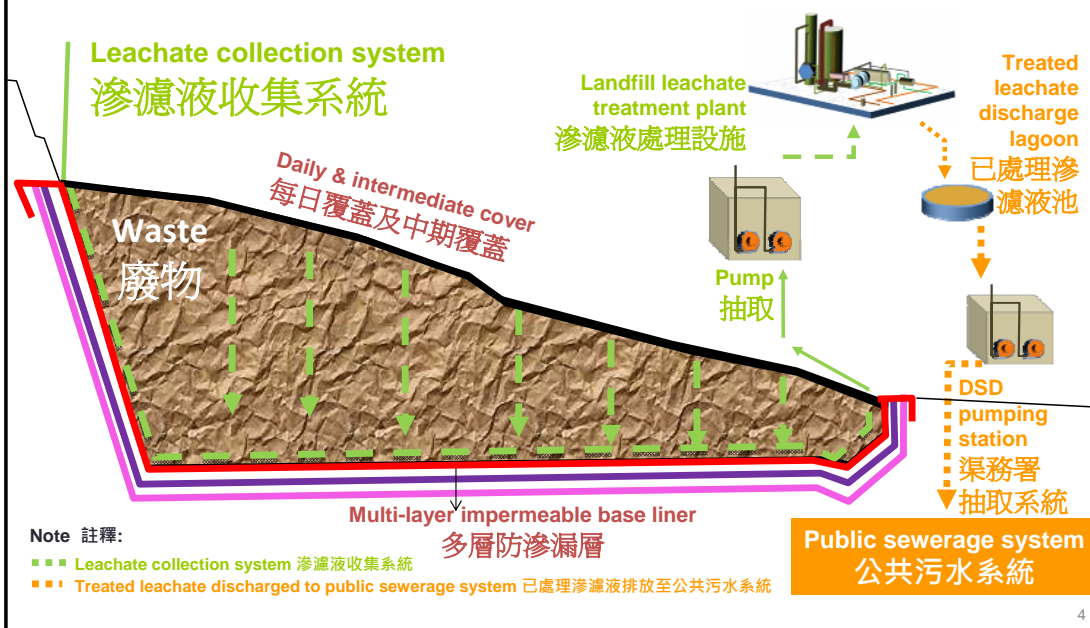


## Incident of Leachate from NENT Landfill Due to Damaged Temporary Lagoon



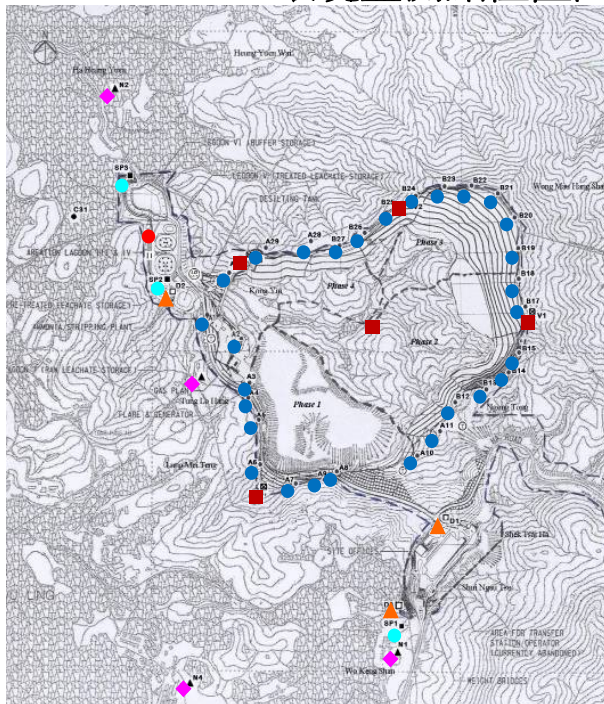
## Leachate Collection & Management System (Normal Operation)

### 滲濾液收集及處理系統 (一般情況)





## Environmental Monitoring Stations of NENT Landfill 環境監測點位置圖



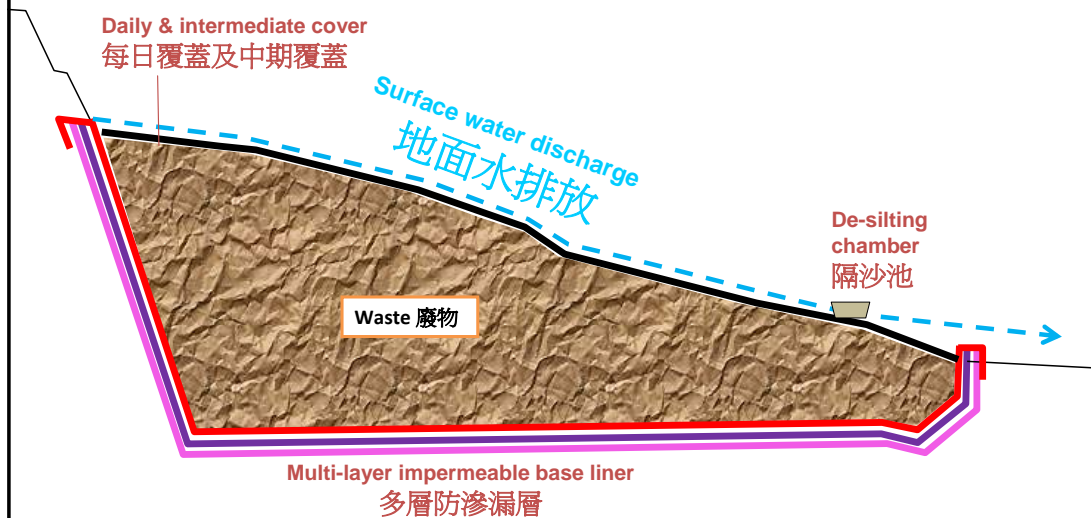
113 monitoring stations in total  
合共113個監測點

Legend 圖例

- Surface Water 地面水
- Groundwater & Landfill Gas 地下水及堆填氣體
- Treated Leachate 處理後滲濾水
- ▲ Dust 塵埃
- ◆ Noise 噪音
- VOC 揮發性有機化合物

5

## Surface Water Management System (On Rainy Days) 地面水收集及處理系統 (雨季情況)



6

## Most Areas of Landfill Already Covered by Impermeable Liners

堆填區的大部份面積已用不滲漏膠墊覆蓋

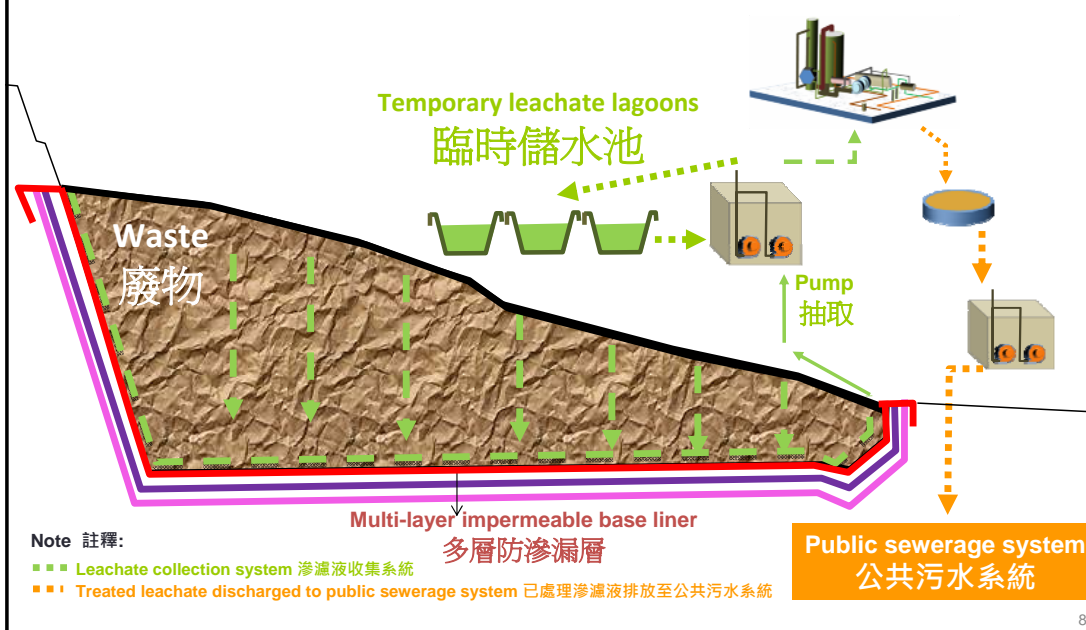


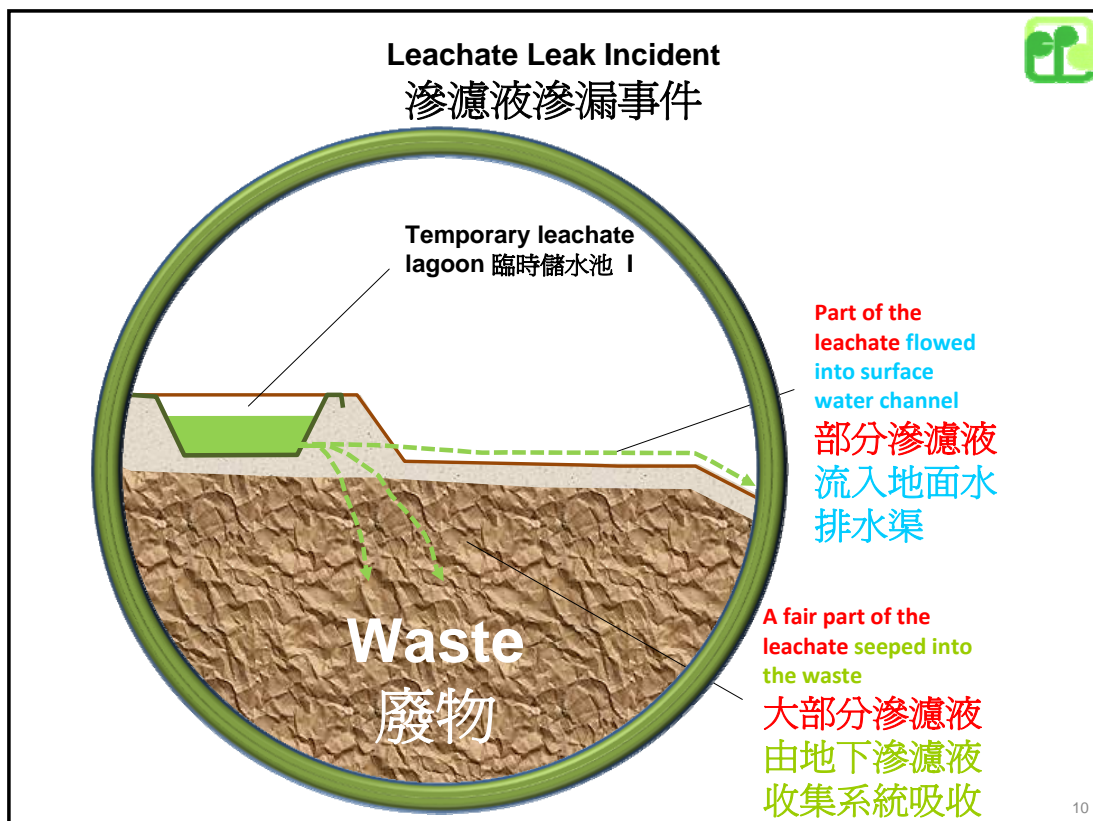
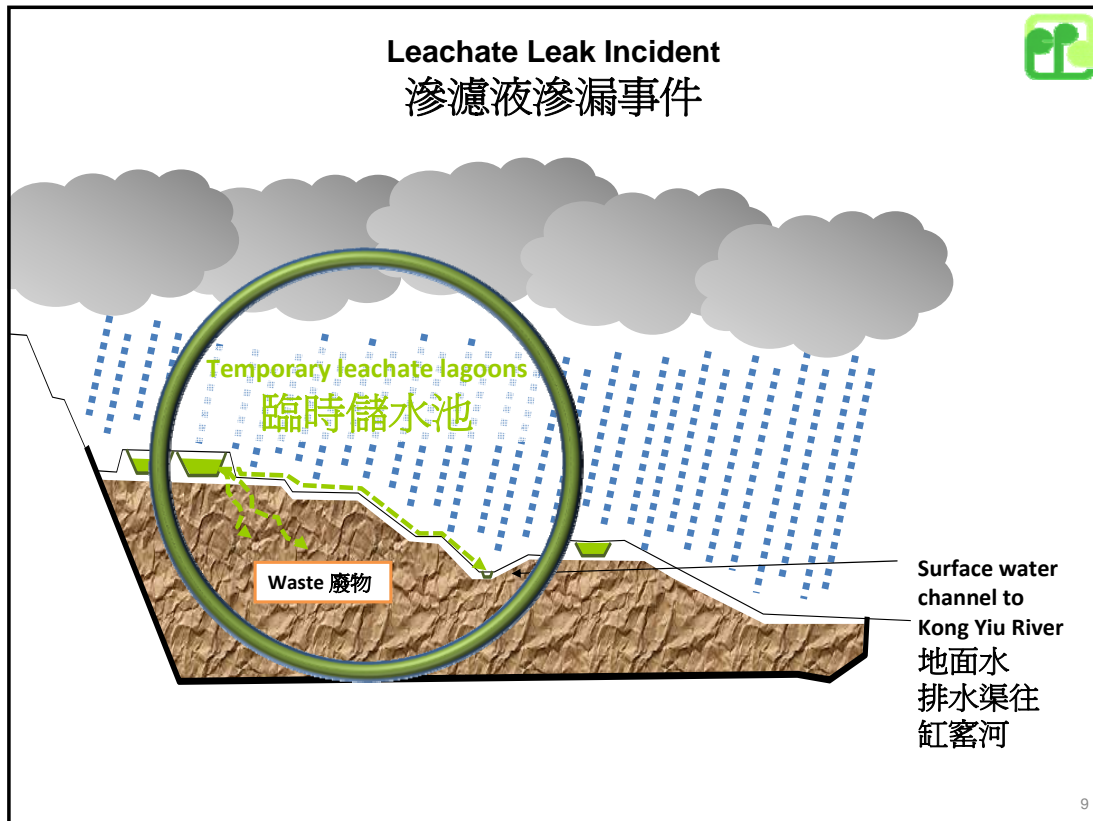
Daily & intermediate cover  
每日覆蓋及中期覆蓋



## Leachate Collection & Management System (During Wet Seasons)

滲濾液收集及處理系統 (雨季情況)









## Damaged Temporary Lagoon (I)

(Resumed Operation after Repairing Completed on 31 August 2013)



## 損壞的臨時儲存池 (I)

(已於2013年8月31日完成復修後恢復運作)



Damaged Temporary Lagoon (I)  
已損壞的臨時儲存池 (I)

## Recommended Follow-up Actions

### 建議跟進行動

#### Short-term Measures 短期措施

- Increase uptake of pre-treated leachate by the current sewerage system as far as possible  
利用現有的污水收集系統，盡量接收更多預先處理的滲濾污水
- Increase tankering of pre-treated leachate direct to Shek Wu Hui STW  
增加水車將預先處理的滲濾污水直接運送往石湖墟污水處理廠

#### Mid-term Measures 中期措施

- Install on-site treatment facility to treat wastewater generated from site activities and proposed new vehicle wash up to standard for direct discharge to Kong Yiu Channel  
安裝場內污水處理設施，處理從工地活動及洗車設施所產生的污水，達到符合直接排放至缸窰河的標準
- Enhance overall leachate management (estimation of leachate generation and provision of adequate storage capacity etc.) and monitoring on site  
改善整體滲濾污水的管理 (估計滲濾污水的產生量及提供充足的儲存容量等)和現場監測工作
- Expedite the upgrading of the sewerage network  
加快開展該區污水系統網絡的改善工程