

塑膠飲料容器

生產者責任計劃公眾諮詢

Public Consultation on the Producer Responsibility Scheme
on

Plastic Beverage Containers



塑膠飲料容器生產者責任計劃公眾諮詢

Public Consultation on

Producer Responsibility Scheme on Plastic Beverage Containers (PPRS)

- 1) 廢塑膠的挑戰
Challenge of waste plastics
- 2) 建議的「塑膠飲料容器生產者責任計劃」
The proposed PPRS
- 3) 主要持份者的角色及責任
Roles and obligations of key parties
- 4) 公眾諮詢
Public consultation
- 5) 意見分享
View Exchange



搵少啲
慳多啲

Dump Less
Save More

塑膠飲料容器生產者責任計劃公眾諮詢

Public Consultation on

Producer Responsibility Scheme on Plastic Beverage Containers (PPRS)

- 1) 廢塑膠的挑戰
Challenge of waste plastics
- 2) 建議的「塑膠飲料容器生產者責任計劃」
The proposed PPRS
- 3) 主要持份者的角色及責任
Roles and obligations of key parties
- 4) 公眾諮詢
Public consultation
- 5) 意見分享
View Exchange



搵少啲
慳多啲

Dump Less
Save More



全球廢塑膠情況

Global Waste Plastic Situation

- ▶ 自1950年代起，全球共產生63億公噸廢塑膠

6.3 billion tonnes of waste plastics were generated globally since the 1950s

- ▶ 其中只有約9%得以循環再造，12%被焚化

Only around 9% has been recycled, and around 12% incinerated



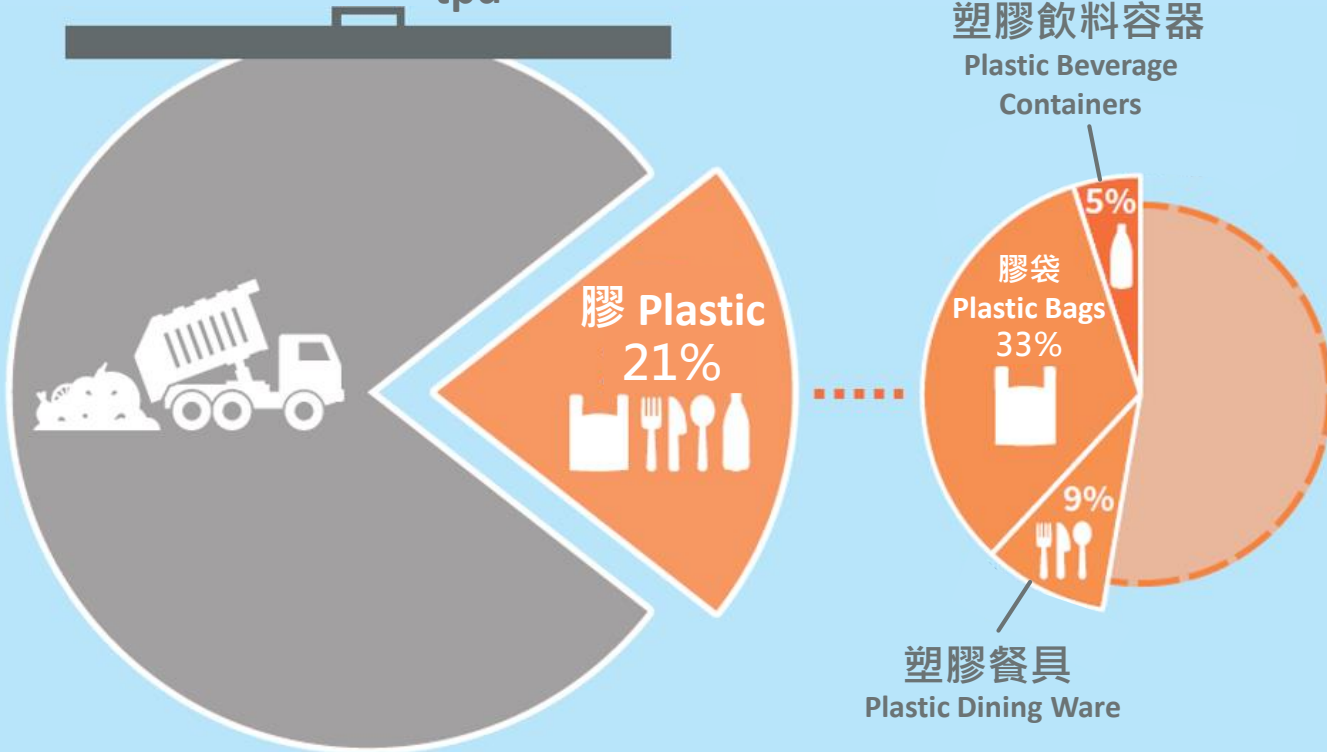
本港塑膠廢物現況

Plastic Waste in HK: Current Situation

都市固體廢物棄置量(2019)

Disposal Amount of Municipal Solid Waste (2019)

> 11,000 公噸(每日)
tpd



棄置廢塑膠(每日) :
Disposal of Waste Plastics (per day):

2,320 公噸
tonnes

聚脂纖維塑膠容器回收率 :
Recycling Rate of
PET Containers:

~17%

塑膠飲料容器

Plastic Beverage Containers

- ▶ 每日棄置量~**106**公噸，佔所有廢塑膠容器約6成
~106 tonnes were disposed per day, ~60% of all waste plastic containers
- ▶ 超過九成為聚脂纖維塑膠 (PET)，較易回收處理
Over 90% is PET which is relatively easy to recycle
- ▶ 如能妥善分類、收集及回收，可成寶貴資源
Can turn into valuable resource if properly separated and collected for recycling
- ▶ 回收塑膠飲料容器在其他地方十分普遍
Plastic beverage containers recycling is commonly practiced in other places
- ▶ 市民習慣「隨買隨飲」的模式，增加有效收集的難度
Difficult to collect for recycling owing to the on-the-go consumption pattern



其他地方的慣常做法

Common Practice in Other Places

- ▶ 在**歐洲、北美洲和澳洲**，通常透過生產者責任計劃設立專用的系統收集飲料容器

In **Europe, North America and Australia**, beverage containers are commonly collected through a dedicated system under the PRSs

- 提供經濟誘因，鼓勵市民交回用完的塑膠飲料容器
Provide economic incentive to encourage the public to return used beverage containers
- 普遍以逆向自動售貨機（「入樽機」）收集飲料容器及提供回贈
Common to use reverse vending machines (RVMs) to collect beverage containers and provide rebate
- 售賣塑膠樽裝飲料的零售商通常充當容器的退還點
Retailers selling plastic-bottled beverages commonly serve as return points for used containers
- 通常有較高的回收率，例如德國和挪威的回收率高於 90%
Generally higher recovery rate, e.g. >90% in Germany and Norway



塑膠飲料容器生產者責任計劃公眾諮詢

Public Consultation on

Producer Responsibility Scheme on Plastic Beverage Containers (PPRS)

- 1) 廢塑膠的挑戰
Challenge of waste plastics
- 2) 建議的「塑膠飲料容器生產者責任計劃」
The proposed PPRS
- 3) 主要持份者的角色及責任
Roles and obligations of key parties
- 4) 公眾諮詢
Public consultation
- 5) 意見分享
View Exchange



搵少啲
慳多啲

Dump Less
Save More



塑膠飲料容器生產者責任計劃的要點

Key Features of the PPRS

- ▶ 設立回贈安排，以鼓勵大眾交回塑膠飲料容器
Set up a rebate arrangement to encourage the public to return plastic beverage containers
- ▶ 在飲料供應商層面收取循環再造徵費，以資助計劃的運作
Impose a recycling levy on the beverage supplier level to fund the operation of the scheme
- ▶ 若干售賣塑膠樽裝飲料的特定零售店舖須作為指定退還點
Certain retail stores selling plastic-bottled beverages to serve as designated return points
- ▶ 適度採用入樽機，以提升回收效率和方便提供回贈
Application of RVMs, as appropriate, to enhance the recovery efficiency and facilitate the provision of rebate
- ▶ 引入牌照制度，確保妥善回收處理塑膠飲料容器
Introduce licensing control to ensure proper recycling and treatment of plastic beverage containers



運作安排

Operation Arrangement



涵蓋範圍

Scope of Coverage

- ▶ 在香港分發#的以密封塑膠容器盛載的飲料，不論該容器是屬於那種塑膠物料
Beverages carried in sealed plastic containers that are distributed in Hong Kong#, irrespective of the plastic materials of the containers
- ▶ 涵蓋容積在**100毫升至2公升**之間的飲料
The coverage is confined to beverages with volume ranging from 100mL to 2L
- ▶ 「飲料」採用玻璃飲料容器生產者責任計劃的同一定義
Adopt the same definition of “**beverage**” as in the PRS on Glass Beverage Containers



不包括 Excluding -

- (i) 本地生產而供出口的塑膠樽裝飲料；及
Plastic-bottled beverage manufactured locally and **solely for export**; and
- (ii) 進口供轉口的塑膠樽裝飲料。
Plastic-bottled beverage imported and **solely for re-export**.

「飲料」定義

Definition of “Beverage”

a) 即開即飲的飲品，包括 -

- (i) 酒精飲品；
- (ii) 水（碳酸或非碳酸）或
以水為主的經調味飲品（碳酸或非碳酸）；
- (iii) 奶或以乳類為主的飲品；
- (iv) 以大豆為主的飲品；
- (v) 果汁或蔬菜汁，或
果蜜飲品或蔬菜蜜飲品；
- (vi) 咖啡、咖啡代替品、茶或草本植物沖泡液；
及
- (vii) 穀物飲品；或

b) 屬液體或含液體及通常在稀釋或調製後用作飲品的產品，例如：

- (i) 濃縮果汁；
- (ii) 柚子蜜

a) A ready-to-serve drink, including -

- (i) Alcoholic drink;
- (ii) Water (carbonated or non-carbonated) or
water-based flavoured drink (carbonated or non-carbonated);
- (iii) Milk or dairy-based drink;
- (iv) Soybean-based drink;
- (v) Fruit or vegetable juice or nectar;
- (vi) Coffee, coffee substitute, tea or herbal infusion;
and
- (vii) Cereal grain drink; or

b) a product that is a liquid or consists of liquid and is commonly served as a drink after being diluted or reconstituted, e.g. -

- (i) Concentrated fruit juice;
- (ii) Honey citron tea

不包括項目

Exclusions

- 建議**不包括** -
Propose to **exclude** -



容積小於100毫升或大於2公升
Volume < 100mL or > 2L



以可重複使用的塑膠容器
盛載的飲料
(例如適用於飲水機的桶裝水)
Refillables (e.g. carboy water)

袋裝飲料

(容器由複合塑膠或其他複合物料製成，
通常不可回收)

Beverages carried in drink pouches
(Pouches made of composite plastic or other composite
materials, generally not recyclable)



在售賣前於銷售點注滿及
密封的外賣飲料產品
(例如珍珠奶茶)

Beverage products filled and sealed
immediately before sale for **takeaway** at
retail outlets on the spot
(e.g. bubble tea)



循環再造徵費

Recycling Levy

- ▶ 按「污染者自付原則」，收回計劃運作成本
Recover the full cost of the PPRS in line with the “polluter pays” principle
- ▶ 兩個部分：
Two components:
 - **回收費**：按容器容積* 以公升單位計算
Recycling fee: To be calculated on container litre-volume basis
 - **回贈**：**劃一水平**按容器數量計算
Rebate: To be determined on number of containers on a **flat rate** basis



* 容器容積指有關容器盛載的產品的體積（以公升計）。

Litre-volume of a container refers to the litre volume of the product contained in the container.

減收徵費

Levy reduction

- ▶ 設有自行收集及回收塑膠飲料容器的供應商，可申請減收徵費
Suppliers with proper arrangement to recover and recycle plastic beverage containers can apply for levy reduction
- ▶ 減收按實際回收量計算
Reduction to be determined by the actual amount recycled
- ▶ 運作須符合特定環保要求
Operation should comply with certain environmental requirements

現時由飲料供應商推出的塑膠飲料容器回收計劃：

Existing plastic beverage containers recovery programmes launched by beverage suppliers:



香港太古可口可樂有限公司 –
「啱一啱·樂意收」
Swire Coca-cola Hong Kong –
“Tap, Return & Earn”



維他奶 –
膠樽回收機
Vitasoy – Plastic Bottle
Recycle Machine



屈臣氏蒸餾水(香港) –
「分分有禮·滴滴賞」
Watsons Water (HK) –
“Drops of Fun”

退還點網絡

Return Point Network

- ▶ 適度便利的退還點網絡
A reasonably convenient return point network
- ▶ 除了合適的公共及政府設施及自願參與的私人地點外，建議售賣預先包裝塑膠樽裝飲料的特定零售店舖須作為指定退還點（例如零售樓面面積不少於200平方米的店舖）
Besides the suitable public and government facilities and private places participated voluntarily, we propose to require certain retail stores selling pre-packaged plastic-bottled beverages to serve as designated return points (say those with retail floor area $\geq 200 \text{ m}^2$)
- ▶ 可以人手方式或透過採用入樽機進行
Either manually or automatically through the application of RVMs



容器循環再造

Container Recycling

- ▶ 收集到的塑膠飲料容器會透過公開招標或其他合適方法，供應給本地回收市場
Plastic beverage containers will be supplied to local recycling market by open tender or other suitable means
- ▶ 塑膠飲料容器的循環再造設施須受牌照規管，以確保妥善回收
Recycling facilities for plastic beverage containers are subject to licensing control to ensure proper recycling



塑膠飲料容器生產者責任計劃公眾諮詢

Public Consultation on

Producer Responsibility Scheme on Plastic Beverage Containers (PPRS)

- 1) 廢塑膠的挑戰
Challenge of waste plastics
- 2) 建議的「塑膠飲料容器生產者責任計劃」
The proposed PPRS
- 3) 主要持份者的角色及責任
Roles and obligations of key parties
- 4) 公眾諮詢
Public consultation
- 5) 意見分享
View Exchange



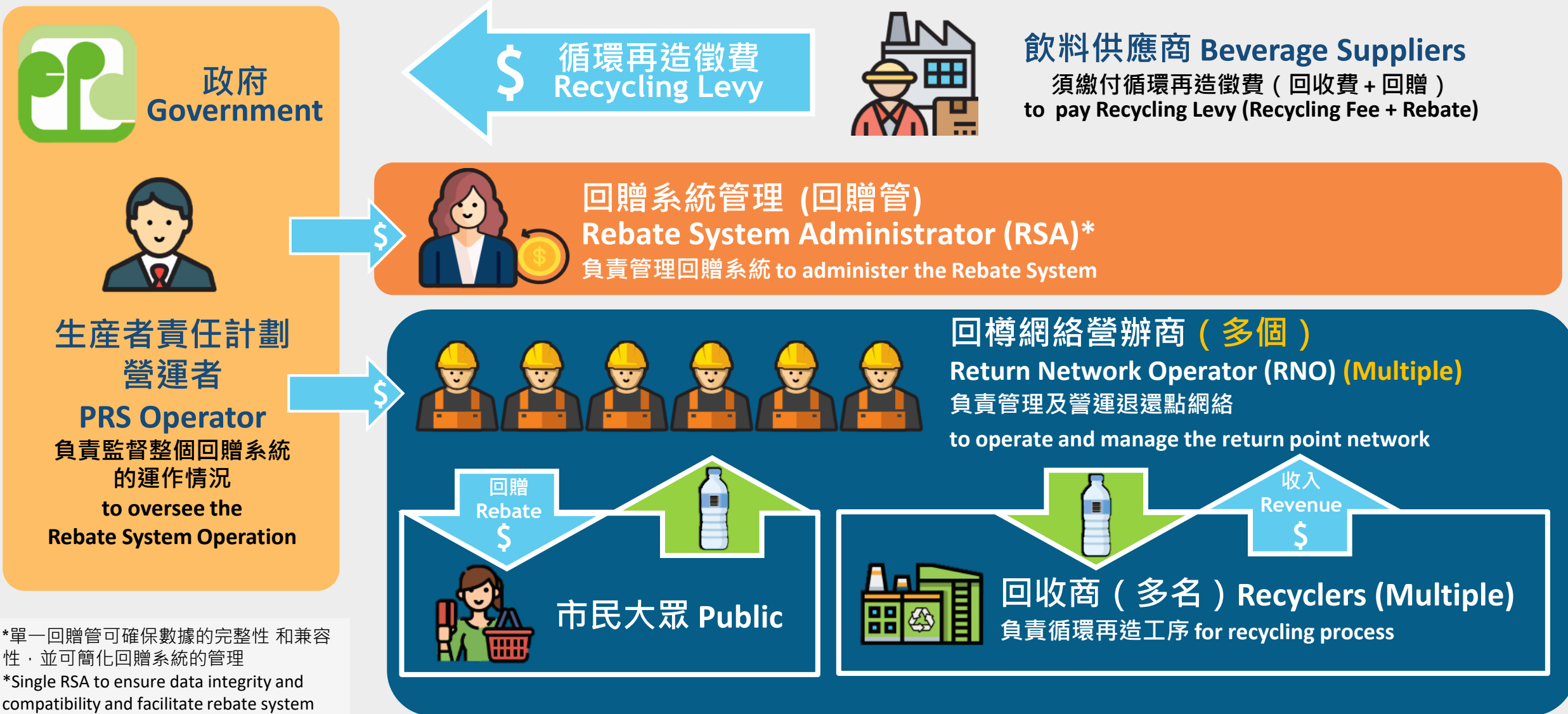
搵少啲
慳多啲

Dump Less
Save More



計劃的設計大綱

Schematic Design of the PPRS



*單一回贈管可確保數據的完整性和兼容性，並可簡化回贈系統的管理

*Single RSA to ensure data integrity and compatibility and facilitate rebate system administration

主要持份者的角色及責任

Roles and Obligations of Key Parties



► 政府 Government —

- 為在香港實施塑膠飲料容器生產者責任計劃提供法律基礎
To provide the legal backup for the implementation of the PPRS
- 執行有關法例，確保有關人士遵守法定要求
To enforce the legislative requirement to ensure compliance
- 擔當或委聘「生產者責任計劃營運者」管理生產者責任計劃
To assume or appoint the “PPRS Operator” to operate the PPRS

主要持份者的角色及責任

Roles and Obligations of Key Parties



► 生產者責任計劃營運者 (由政府負責擔當或委聘)

PRS Operator (to assume / to be appointed by the Government) –

- 委聘及管理「回贈系統管理」和「回樽網絡營辦商」
Appoint and manage Rebate System Administrator (RSA) and Return Network Operators (RNOs)
- 監督整個回贈系統的運作及塑膠容器的收集情況
Oversee the operation of the rebate system and collection of the returned plastic containers
- 處理塑膠飲料供應商的登記
Process registration of beverage suppliers
- 處理登記供應商的定期申報及減免徵費申請等，以計算供應商須繳交的循環再造徵費
Process periodic returns and applications for levy reduction, etc., from registered suppliers for calculating the recycling levy to be paid by suppliers
- 收取飲料供應商繳付的循環再造徵費
Receive recycling levy payment by the beverage suppliers

主要持份者的角色及責任

Roles and Obligations of Key Parties

► 回贈系統管理 (回贈管) Rebate System Administrator (RSA) –



- 設立、管理和營運資訊科技平台，以管理回贈系統
Set up, manage and operate the IT platform for administration of the rebate system
- 辦理飲料產品的登記，以及設立已登記飲料產品的中央數據庫並維持其運作
Process registration of beverage products, and set up and maintain central databases of registered beverage products
- 為退還點提供和安裝入樽機
Provide and set up RVMs for return points
- 作為中央交易結算平台，接收及處理各個回樽網絡營辦商的數據
Act as central transaction clearing platform to receive and process data from different RNOs

主要持份者的角色及責任

Roles and Obligations of Key Parties



► 回樽網絡營辦商

Return Network Operators (RNOs) –

- 在其服務區域設立、管理和營運退還點，以收集大眾交回的飲料容器
Establish, manage and operate the return points in its catchment region for collection of the plastic beverage containers returned by the public
- 設立及營運不少於一間區域性點算及打捆中心
Set up and operate not less than one regional counting and baling centre
- 收集交回的容器並運往區域性點算及打捆中心
Collect returned containers to regional counting and baling centre
- 把交回的容器打捆並供應給本地回收市場作循環再造
Bale the returned containers and supply to local market for recycling

主要持份者的角色及責任

Roles and Obligations of Key Parties

► 供應商 (包括製造商及進口商)

Suppliers (including manufacturers and importers) –

- 登記成為「登記供應商」

Register as **Register Supplier**

- 為擬在本港分發的塑膠樽裝飲料產品的資料作登記，並在容器上提供所需的條碼及特定的**回收標誌**

Register the information on plastic-bottled beverage products to be distributed in Hong Kong and provide the required **barcodes** and designated **recycling logos** on plastic beverage containers

- 定期呈交在本港分發的塑膠樽裝飲料產品的**生產量或入口量**

Submit periodic returns for the amount of the plastic-bottled beverage products **manufactured or imported** that are distributed in Hong Kong

- 按時繳付按已分發的塑膠樽裝飲料產品總量計算的**循環再造徵費**

Pay the **recycling levy** calculated based on the amount of plastic-bottled beverage products distributed on time

- 聘請獨立及合資格的審計師擬備**周年審計報告**，以確保資料準確無誤

Engage an independent and qualified auditor to prepare **annual audit report** to ensure factual accuracy



主要持份者的角色及責任

Roles and Obligations of Key Parties



► 零售商 Retailers –

- 售賣塑膠樽裝飲料產品並具一定運作規模的零售商（例如零售樓面面積不少於200平方米）必須**提供回樽及回贈服務**

Retailers selling plastic-bottled beverage products and with certain operation scale (say those stores with retail floor area $\geq 200 \text{ m}^2$) to **provide take-back and rebate redemption services**



► 市民大眾 The Public –

- 交回用完的塑膠飲料容器到指定的退還點以獲取回贈

Return used plastic beverage containers to designated return points for redeeming the rebate



► 回收商 Recyclers –

- 申領所需牌照

Apply for the necessary licences

- 按遵照牌照條款要求，妥善回收塑膠飲料容器

Proper recycle plastic beverage containers in compliance with the licence terms and conditions

塑膠飲料容器生產者責任計劃公眾諮詢

Public Consultation on

Producer Responsibility Scheme on Plastic Beverage Containers (PPRS)

- 1) 廢塑膠的挑戰
Challenge of waste plastics
- 2) 建議的「塑膠飲料容器生產者責任計劃」
The proposed PPRS
- 3) 主要持份者的角色及責任
Roles and obligations of key parties
- 4) **公眾諮詢**
Public consultation
- 5) 意見分享
View Exchange



**搵少啲
慳多啲**
Dump Less
Save More

諮詢公眾的主要議題

Key Issues for Public Consultation

► 收集公眾對建議的塑膠飲料容器生產者責任計劃的意見，主要包括 –

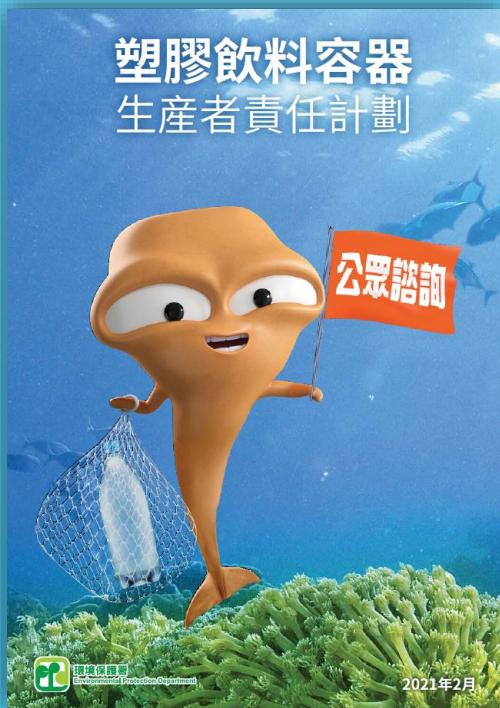
To gauge public's view on the proposed PPRS, mainly including -

- 引入強制性生產者責任計劃的需要
Need for introducing a mandatory PRS
- 規管範圍
Scope of control
- 引入回贈及回贈水平
Introducing a rebate and the rebate level
- 循環再造徵費及減收徵費
Recycling levy and levy reduction
- 供應商及零售商的責任
Suppliers' and retailers' responsibilities
- 入樽機的應用及適合的退還點
Application of RVMs and suitable return points
- 收集及處理塑膠飲料容器的安排
Arrangement on collection and treatment of plastic beverage containers
- 牌照規管要求確保妥善回收
Licencing control to ensure recycling quality
- 其他建議及意見
Other suggestions and comments

公眾諮詢文件及相關資料

Public Consultation Document and Relevant Information

諮詢文件 Consultation Paper



宣傳單張 Leaflet



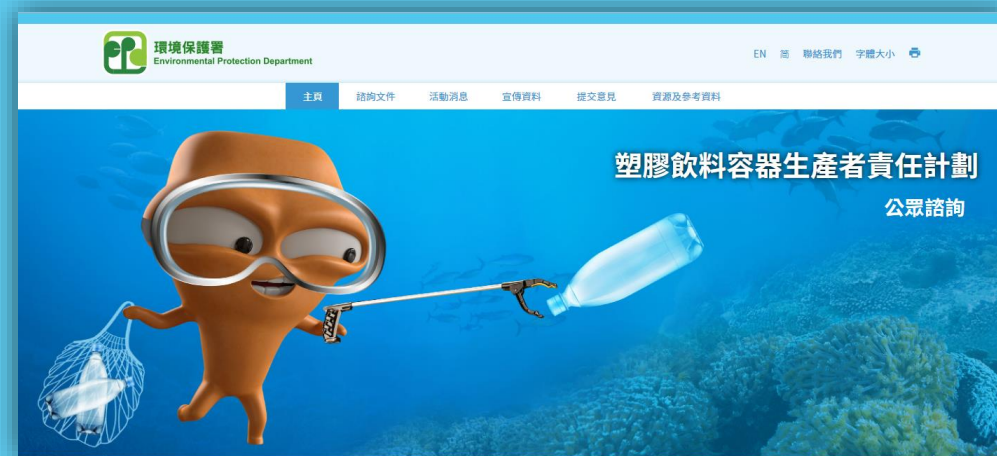
海報 Poster



專題網頁

Dedicated website

www.pprs.hk



期待你的寶貴意見

Share Your Views with Us

截止日期：2021年5月21日
Deadline: 21-May-2021

網上提交意見，或下載意見回覆表：
Online view submission or downloading the response form:

網址：www.pprs.hk

Website:



電郵：pprs@epd.gov.hk

Email:

郵寄：香港鰂魚涌
海灣街1號
華懋交易廣場15樓1501室
環境保護署
廢物管理政策組

Post：Waste Management Policy Group
Environmental Protection Department
Room 1501, 15/F, Chinachem Exchange Square,
1 Hoi Wan Street,
Quarry Bay, Hong Kong.

傳真：3121-5761

Fax:

塑膠飲料容器生產者責任計劃公眾諮詢

Public Consultation on

Producer Responsibility Scheme on Plastic Beverage Containers (PPRS)

- 1) 廢塑膠的挑戰
Challenge of waste plastics
- 2) 建議的「塑膠飲料容器生產者責任計劃」
The proposed PPRS
- 3) 主要持份者的角色及責任
Roles and obligations of key parties
- 4) 公眾諮詢
Public consultation
- 5) 意見分享
View Exchange



搵少啲
慳多啲

Dump Less
Save More



謝謝
Thank you

