

PROTECT OUR ENVIRONMENT KEEP WASTEWATER AWAY FROM STORMWATER DRAIN



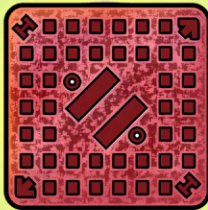
Sources of wastewater



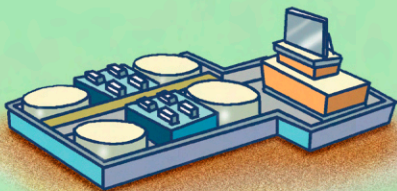
Keep wastewater away from stormwater drain



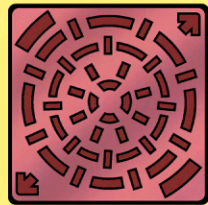
Foul sewer



Wastewater treatment plant



Stormwater drain



Hong Kong waters

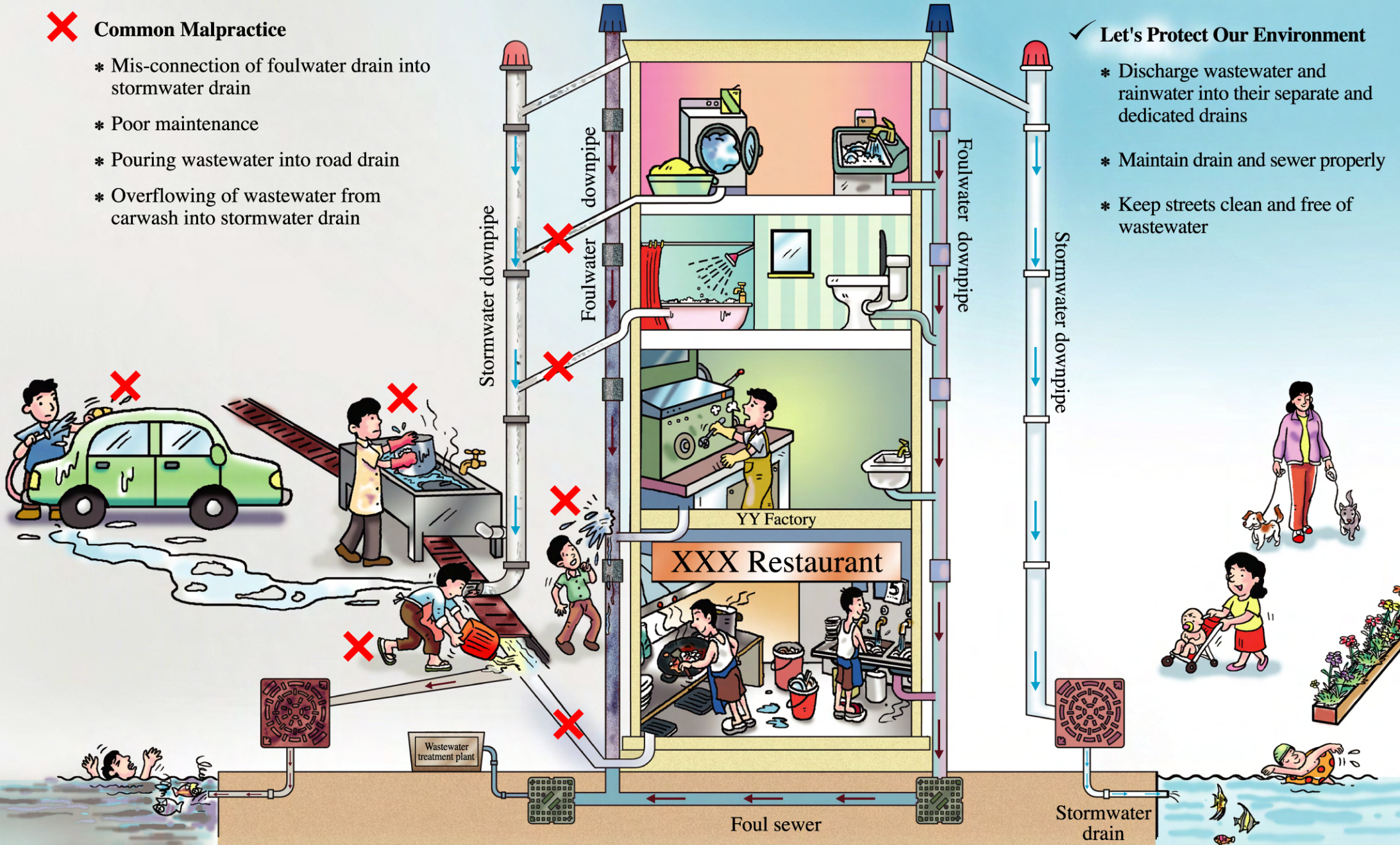


❌ Common Malpractice

- * Mis-connection of foulwater drain into stormwater drain
- * Poor maintenance
- * Pouring wastewater into road drain
- * Overflowing of wastewater from carwash into stormwater drain

✅ Let's Protect Our Environment

- * Discharge wastewater and rainwater into their separate and dedicated drains
- * Maintain drain and sewer properly
- * Keep streets clean and free of wastewater



Points to note:

- ✓ Conduct regular check and maintenance of all drainage system in residential, commercial and industrial buildings. Clear all blockage and rectify any problems spotted at once.
- ✓ Rectify any mis-connection immediately.
- ✓ All repair / modification works on drainage system must comply with the relevant legislations and supervised by qualified persons.
- ✓ Keep the manhole covers tightly closed.
- ✓ Assign a dedicated area for washing vehicles and refuse collection facilities and ensure that all wastewater is discharged into foul sewer.

— EPD Hotline —

For more information on how to handle and discharge wastewater properly, please call EPD Hotline at 2838 3111, or you may send an email to enquiry@epd.gov.hk.

— Supplementary Information —

Drainage Services Department's Website:
www.dsd.gov.hk
24 Hours Hotline: 2300 1110

Buildings Department's Website:
www.bd.gov.hk
Hotline: 2626 1616

