




Next 

 繁體中文
  简体中文
  Site Map

# 2008 Environmental Report



- [Foreword](#)
- [Vision, Mission & Values](#)
- [Environmental Policy / Goals](#)
- [Responsibilities](#)
- [Environmental Management](#)
- [Environmental Performance](#)
- [Stakeholder Engagement](#)
- [Environmental Targets](#)

For better viewing effect,  
please use Internet Explorer 6.0 or above at 1024 x  
768 screen resolution.



# 2008 Environmental Report



Foreword

Vision, Mission &amp; Values

Environmental Policy / Goals

Responsibilities

Environmental Management

Environmental Performance

Stakeholder Engagement

Environmental Targets



## Foreword



The Drainage Services Department has been working wholeheartedly to address the environmental concerns and to strive for a balance on economic, social, and environmental aspects in delivering our drainage services.

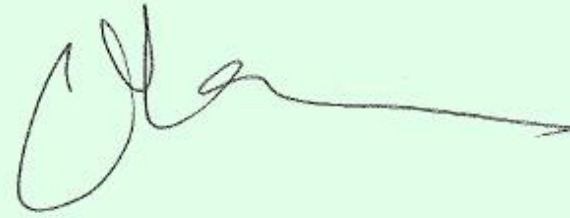
In 2008, we met all the major environmental targets, including energy conservation, chemical conservation, paper consumption reduction, waste recovery and ecological enhancement. Efforts on implementing energy efficiency measures and utilizing renewable energy at our sewage treatment works had reduced energy consumption of 1.15M kWh. We will continue to enhance our services as well as our environmental performance.

On sewerage services, we gained the support of the public to adjust the Sewage Charge rate and the Trade Effluent Surcharge rates starting in 2008 in accordance with the polluter pays principle. We proceeded with the implementation of the Harbour Area Treatment Scheme Stage 2A to further improve the harbour water quality by 2014 as pledged in the Policy Address. To bring early improvement to the bacteriological quality of the closed beaches in Tsuen Wan, we advanced the construction of the disinfection facilities under the Scheme aiming at commissioning in late 2009.

On flood protection, we completed the intercepting drains along Queen's Road Central reducing 30% of the surface runoff entering the low-lying Wing Lok Street. This together with the subsequent completion of an underground stormwater pumping station at the waterfront in early 2009 provide the required flood protection to Wing Lok Street and surrounding areas. The pumping station has adopted a half sunken design to reduce the landtake and the adjacent open space will be landscaped to match with the proposed seafront promenade development for the enjoyment of the public. We also consulted District Councils and other stakeholders on how to improve the aesthetic quality of the drainage channel in Yuen Long and Kai Tak.

This report discloses our environmental performance in 2008. We welcome your

comments as they would certainly help us improve further on our works. Our email address is [enquiry@dsd.gov.hk](mailto:enquiry@dsd.gov.hk)



K. K. Lau  
Director of Drainage Services

---

 [Top](#)

# 2008 Environmental Report



Foreword

Vision, Mission & Values

Environmental Policy / Goals

Responsibilities


Environmental Management

Environmental Performance

Stakeholder Engagement

Environmental Targets

## Vision, Mission & Values

Click to enlarge 

### 我們的抱負、使命和信念 Our Vision, Mission and Values



渠署萬眾心連心 治水防洪衛萬民  
除污淨流港生輝 竭誠服務樂社群



Poster on Vision, Mission and Values

### Vision

To provide world-class wastewater and stormwater drainage services enabling the sustainable development of Hong Kong

### Mission

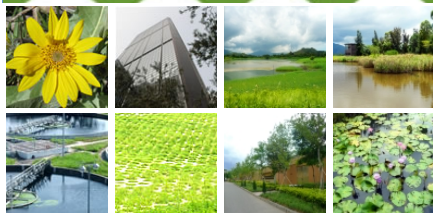
- Improving drainage services in a cost-effective and environmentally responsible manner.
- Enhancing a caring, harmonious, safe and healthy work environment that fosters staff development and a mindset for change.
- Strengthening relationships with community, industry and worldwide counterparts

### Values

- Customer Satisfaction
- Quality
- Commitment
- Teamwork



# 2008 Environmental Report



Foreword

Vision, Mission &amp; Values

 Environmental Policy / Goals

Responsibilities

Environmental Management

Environmental Performance

Stakeholder Engagement

Environmental Targets

## Environmental Policy & Goals

- Environmental Policy
- Environmental Goals



## Environmental Policy

We are committed to being environmentally conscious in all our activities and services and endeavour to serve the Hong Kong community with the best of our expertise in safeguarding human health, protecting and preserving natural ecosystems, thus contributing to the sustainable development of Hong Kong.

We aim to continually improve the quality of our services, and to alleviate as far as practicable the impact that our facilities and sewage and drainage systems impose on the environment of Hong Kong. To meet these objectives, we are committed to:

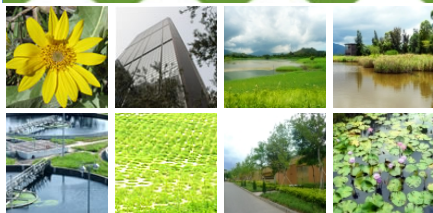
- Adopting state-of-the-art clean technologies and pollution prevention measures;
- Integrating sustainability considerations into the design, construction and operation of our facilities;
- Minimising and mitigating environmental impacts arising from the construction and operation of our facilities;
- Meeting all statutory and regulatory requirements on environmental performance that are applicable to the activities of the department; and
- Devising and conducting internal operations in an environmentally responsible manner.

We ensure that our Environmental Policy is communicated to all staff, our consultants and contractors, and is open to public scrutiny. Our staff are committed to upholding this departmental policy, obtaining the relevant training and deploying the necessary resources to enable its implementation.



Top

# 2008 Environmental Report



Foreword

Vision, Mission &amp; Values

Environmental Policy / Goals

 Responsibilities




Environmental Management

Environmental Performance

Stakeholder Engagement

Environmental Targets

## Responsibilities

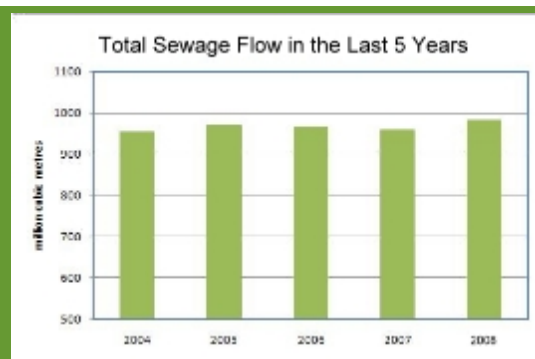
Click to enlarge Click to enlarge Click to enlarge 

## Responsibilities

DSD is responsible for flood protection, and collection and treatment of sewage in Hong Kong. On flood protection, the major activities include the planning and implementation of the drainage systems under each Drainage Master Plan, the river channel management in the New Territories, and the operation of flood protection facilities. On sewage collection and treatment, DSD designs, constructs, operates, and maintains sewerage system and sewage treatment plant with respect to the Sewerage Master Plan prepared by the Environmental Protection Department.

## Flood Protection

With an annual rainfall exceeding 2,200 mm, one of the highest among the cities in the Pacific Rim, flooding is a serious concern in the low-lying areas of the northern New Territories and the old urban areas. DSD is tasked to reduce the risk of flooding and has been implementing a massive flood prevention programme. It includes the development of drainage tunnel, the training of river, the provision of village flood protection scheme, and the undertaking of urban drainage improvement works. To ensure that stormwater finds its way into the sea without causing flooding, DSD carried out maintenance works on 2,626 km of drainage channels and stormwater drains, and 27 village flood protection schemes in 2008. Furthermore, DSD also spent \$1.4B on capital works for drainage improvement.



## Sewage Collection and Treatment

DSD collected and treated 990 million cubic metres of sewage in 2008. The facilities for handling the sewage include 67 sewage treatment works (STW), 207 sewage pumping stations, 44 submarine outfalls, 3 effluent disposal tunnels, and 1,610 kilometres of sewers.

DSD continues to expand and upgrade the collection and treatment of sewage. About 120 villages are served by public sewers, and works are being carried out to extend the coverage to another 40 villages. On sewage treatment side, DSD commissioned the new membrane bioreactor process successfully in 2008.



Tai Lam MBR Plant




Top



# 2008 Environmental Report

## Environmental Management



Click to enlarge 

- Foreword
- Vision, Mission & Values
- Environmental Policy / Goals
- Responsibilities
- Environmental Management
- Environmental Performance
- Stakeholder Engagement
- Environmental Targets



DSD has approximately 2,000 staff, consisting of 1,850 permanent establishment and 150 contract posts. There are about 300 professional staff, 1,100 technical and general staff, and 600 frontline staff and direct labours. The department is divided into four branches - Projects and Development, Operations and Maintenance, Electrical and Mechanical, and Sewerage Services. Each branch is headed by an Assistant Director. There are seven integrated management system under ISO 9001 and ISO 14001 to cover all aspects of DSD.

The Deputy Director chairs a Green Management Committee to formulate and review the environmental policies and environmental goals of the department. The Committee also monitors the performance of environmental targets and promotes staff awareness and involvement in protecting the environment. The Committee is represented by the Management Representative or Deputy Management Representatives of each Integrated Management System under which the environmental policies are implemented and monitored. A green manager at the Assistant Director level with assistance from a senior professional and the department administration oversees and coordinates the day-to-day green issues.

# 2008 Environmental Report



Foreword

Vision, Mission & Values

Environmental Policy / Goals

Responsibilities

Environmental Management

→ Environmental Performance

Stakeholder Engagement

Environmental Targets

## Environmental Performance

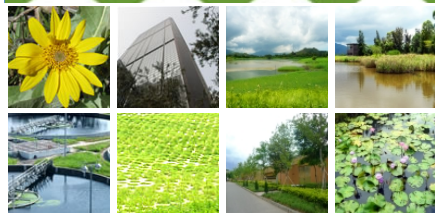
- Achievement in Sewage Treatment
- Environmental Compliance and Monitoring
- Ecological Enhancement
- Green Office
- Progress of Clean Air Charter



This chapter presents our environmental performance on the following areas:

- Achievement in Sewage Treatment
- Environmental Compliance and Monitoring
- Ecological Enhancement
- Green Office
- Progress of Clean Air Charter

# 2008 Environmental Report



Foreword

Vision, Mission &amp; Values

Environmental Policy / Goals

Responsibilities




Environmental Management

Environmental Performance

 Stakeholder Engagement

Environmental Targets

## Stakeholder Engagement

Click to enlarge Click to enlarge Click to enlarge 

## Staff Training

DSD continues to provide training to staff to update their environmental knowledge, and to enhance their environmental awareness and competency. In 2008 we supported 83 staff to attend training courses on environmental matters. To cope with the newly implemented ISO 14001 environmental management systems in DSD, we provided ISO 14001 related training courses to 132 staff in 2008.

## Community Engagement

DSD maintains effective communications with external stakeholders as they provide useful feedback to minimize the impact of our operations on the environment. In 2008 we continued to engage the green groups, academia, professional organizations, District Council members, and LegCo members on our projects. Our director had attended meetings at six District Councils to update members on our works and listen to their concern about drainage services. A meet-the-media function was organized to enhance our communications with the press. Extensive consultations have been conducted with the stakeholder affected by the construction of the Tsuen Wan Drainage Tunnel and the Hong Kong West Drainage Tunnel in 2008. Community Liaison Groups have also been set up to help address the stakeholders' concern on our projects. Additional description on stakeholder engagement activities could be found in our [Annual Report](#).



Joint Capture Survey with Green Group

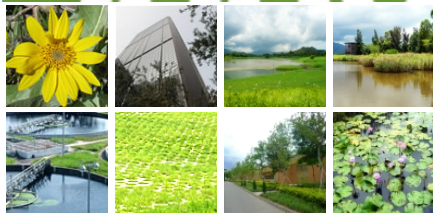
[↑](#) Top



# 2008 Environmental Report

## Environmental

### Environmental Targets


[Foreword](#)
[Vision, Mission & Values](#)
[Environmental Policy / Goals](#)
[Responsibilities](#)
[Environmental Management](#)
[Environmental Performance](#)
[Stakeholder Engagement](#)
 [Environmental Targets](#)


### 2008 Achievement of Environmental Targets

Environmental targets are set each year as a tool to help colleagues to focus on the environmental quality that is of major concern of DSD. They are also important elements in the “Plan-Do-Check-Act” management cycle for continuous improvement.

Click [Here](#) for Achievement of Environmental Targets

Click [Here](#) for Environmental Targets for 2009