





| 中文 | Feedback | Home |

Environmental Report

- About This Report
- Organizational Profile
- Environmental Policy
- Our Vision
- Environmental Management
- Our Triple Role
 - Corporate Citizen
 - Regulatory Authority
 - Service Provider
- Key Results in 2002
- Awards and Recognition
- Independent Assessment on Environment Report
- Data and Facts
- Feedback

About this Report

Welcome to the fourth EMSD Corporate Environmental Report. We publish this annual Environmental Report to keep our stakeholders informed on our environmental activities and results achieved over the year 2002. This report provides a wide range of information about our efforts in protecting, conserving and improving our environment. It also provides environmental data from our core activities.

We would like to take this opportunity to thank all those who provided us with comments on the quality and relevance of our previous reports. We look forward to your valuable feedback, which can be sent to us electronically via the Feedback Form at the back of this report.



EMSD Headquarter

Scope of this Report

This report focuses on efforts and achievements within EMSD based on results over the 2002 calendar year (January to December). It also contains information on relevant activities and our outlook for the future.



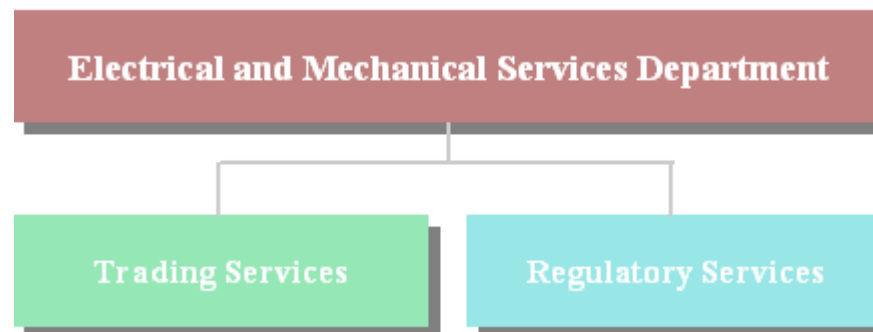
[| 中文](#) | [Feedback](#) | [Home](#) |

Environmental Report

Organizational Profile

- [About This Report](#)
- [Organizational Profile](#)
- [Environmental Policy](#)
- [Our Vision](#)
- [Environmental Management](#)
- [Our Triple Role](#)
- [Corporate Citizen](#)
- [Regulatory Authority](#)
- [Service Provider](#)
- [Key Results in 2002](#)
- [Awards and Recognition](#)
- [Independent Assessment on Environment Report](#)
- [Data and Facts](#)
- [Feedback](#)

EMSD has a workforce of around 5,000. We take on the triple role of an authority in promoting energy efficiency in the community (alongside with our regulatory role in electricity, gas and mechanical safety), a service provider in providing professional engineering services for Government departments and related organizations as well as being a good corporate citizen.



Our Trading services arm provides a wide range of consultancy and value-added engineering and maintenance services to our

Our Regulatory services arm provides core regulatory functions to ensure public safety in electrical, mechanical and gas

customers (Government departments, etc.) to ensure their engineering systems are up and running without interruption to deliver effective and efficient services to the public. We serve the airport, hospitals, schools, disciplined forces, transportation and highways, port and harbour as well as public recreation and leisure facilities that make up the very fabric of life in Hong Kong.

applications. We are also actively involved in promoting energy efficiency and protection of environment through new services and activities together with our support to government's sustainable development and environmental initiatives, such as the introduction of LPG vehicles and the studies for renewable energy source in Hong Kong.



| 中文 | Feedback | Home |

Environmental Report

- About This Report
- Organizational Profile
- Environmental Policy
- Our Vision
- Environmental Management
- Our Triple Role
- Corporate Citizen
- Regulatory Authority
- Service Provider
- Key Results in 2002
- Awards and Recognition
- Independent Assessment on Environment Report
- Data and Facts
- Feedback

Environmental Policy

Goal

The management and staff of the Electrical and Mechanical Services Department are committed to building a better environment through an ongoing conservation, protection and improvement programme.

Policies

To ensure fulfilment of this goal, EMSD has drawn up the environmental policy. In accordance with this, we undertake:

- To take pride in ourselves as a responsible organisation that is helping to build a better environment
- To take every reasonable and practicable measure to conserve resources, minimize the generation of waste and prevent pollution in each and every one of our business operation processes.
- To comply with green legislation as the baseline of our operations and to ensure that all staff behave accordingly.
- To encourage our contractors and their staff to be equally friendly to the

environment.

- To ensure that our environmental management system conforms to internationally recognised ISO 14001 standards.



| 中文 | Feedback | Home |

Environmental Report

- About This Report
- Organizational Profile
- Environmental Policy
- Our Vision
- Environmental Management
- Our Triple Role
 - Corporate Citizen
 - Regulatory Authority
 - Service Provider
- Key Results in 2002
- Awards and Recognition
- Independent Assessment on Environment Report
- Data and Facts
- Feedback

Our Vision

Vision of Regulatory Services

Our vision is to be the government agency that makes Hong Kong a top-ranking city in E&M safety and in the utilization of energy

Vision of Trading Services

Our Vision is to be the most preferred E&M engineering service provider in Hong Kong.



Environmental Report

- About This Report
- Organizational Profile
- Environmental Policy
- Our Vision
- Environmental Management
- Our Triple Role
 - Corporate Citizen
 - Regulatory Authority
 - Service Provider
- Key Results in 2002
- Awards and Recognition
- Independent Assessment on Environment Report
- Data and Facts
- Feedback

Environment Management

Our commitment to environmental responsibility goes back a long way. For example, we have been paying attention to energy efficiency for many years; we set up our Energy Efficiency Office in 1994 to drive for energy efficiency and conservation programmes in Hong Kong. In our own operation, we recognise that more can be done in managing the environmental impacts arising from our operations and activities. In 1999 we took the decision to establish a formal Environmental Management System (EMS) and was awarded an ISO14001 Corporate Certificate in 2000.

A best practice

At EMSD we conduct periodic inspections and internal audit to ensure compliance with regulatory requirements. In addition, we invite external body to conduct ISO14001 audits to ensure our compliance with international standard

● Environmental Management Structure



Quality, Environmental & Productivity Steering Committee - comprising an assistant director and senior management from major business areas and support functions - ensures that all quality, environmental and

safety policies are properly implemented and impetus of respective management systems is maintained.

• Environmental Management System

The Environmental Management System (EMS) sets the standards that EMSD must, as a minimum, comply with the legal environment protection requirements. It provides a comprehensive framework to help each Division to systematically managing its daily operation in an environmental responsible manner. In 2002, the EMS had been renewed and rationalized to encompass 10 distinct but coherent divisional level management systems, all of which are internally and externally audited to the ISO 14001 requirements.



• Identifying Environmental Impact



The EMS has enabled EMSD to internalise the P-D-C-A cycle philosophy to educate, raise awareness, communicate with stakeholders and checking its effectiveness to ensure all environmental aspects are identified so that proactive control measures can be taken in our activities to eliminate or minimize their impacts on the environment.

• Significant Environmental Aspects

To conserve the environment, the first priority is to avoid creating adverse environmental aspect and to reduce their impacts. We are aware that our operation can create environmental aspects during our services to some existing systems. We are carefully identifying and evaluating issues with significant environmental aspect in the first place to ensure that we can exert a positive influence to reduce their impacts. This process not only helps us to have a clear overview of how we affect the environment and use of resources, it also helps us to reduce environmental impacts from our activities and to achieve cost savings and productivity improvement.

• Audit Mechanism



Regulatory compliance inspections and operational evaluations have been woven into the daily routine in EMSD. We have over 100 staff trained to perform ISO 14001 internal auditing. They performed around 80 man-days of cross-division internal audits in year 2002

to ascertain the effectiveness of the EMS in each Division. Our EMS is also subject to independent external Certification Body surveillance audits in six monthly basis.

- **Training and Awareness Promotion**

To upkeep the environmental awareness of our employees and new recruits, regular training programmes have been developed. The programme includes general awareness for all employees and regulatory-compliance training for team leaders and selected staff members. Specific courses are organized for managers and internal auditors. More than 3,370 man-days have been invested in this aspect to date. Such training and development effort will be maintained so as to prepare each EMSD employee to discharge their duties in an environmental friendly manner.

- **Communication with Stakeholders including the Public**

We listened to our stakeholders who include our customers, employees and the general public and recognised their interest on our environmental performance. We conduct regular surveys for both EMSD employees and our customers to gauge their feedback in order to form our future targets for improvements. We publish the annual Environmental Report since 1999 by posting them onto our Internet.

As a Service Provider to all trading services clients, we go the extra mile of providing professional advice on energy savings to help them improve their overall environmental performance.

As a Regulatory Authority, we are actively involved in promoting energy efficiency. We take this message to the community through a number of different channels, including radio and TV campaigns, publications, promotional advertisements, posters, road shows and free seminars.

Environmental Report Triple Role

- About This Report
- Organizational Profile
- Environmental Policy
- Our Vision
- Environmental Management
- Our Triple Role
- Corporate Citizen
- Regulatory Authority
- Service Provider
- Key Results in 2002
- Awards and Recognition
- Independent Assessment on Environment Report
- Data and Facts
- Feedback

Because of our diverse activities, we play a triple-role in conserving, improving and protection the environment.



Corporate Citizen - *Caring for our Environment*

- **Recycle Paper**

We monitor the consumption pattern of new and recycled paper in relation to our daily operations. Starting from late 2001, EMSD began the



widespread use of environment-friendly recycled office printing papers made from recycled fibre sources.

- **Waste Management**

Over the years, EMSD has handled and disposed considerable amount of industrial and chemical wastes in an environmentally responsible manner. Collected items are carefully stored and transported before being disposed of in accordance with statutory requirements.

- **Spent Mercury Lamp**



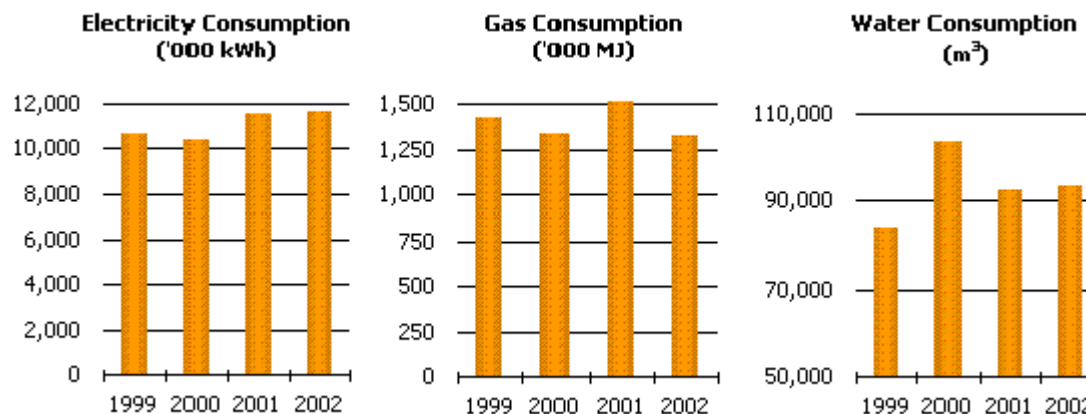
The Environmental Protection Department will commission a mercury recycling plant in Tsing Yi in year 2003 to recover spent mercury lamps

and fluorescent tubes from government premises. As a key service provider for the Government, we volunteered to store up fluorescent lamps in Wanchai Government Towers Complex since April 2002 and have extended the practice to

other venues.



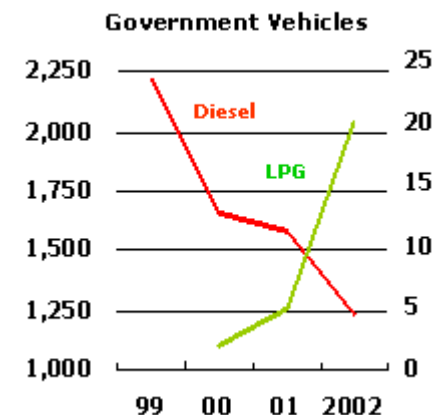
- **Energy and Resource Savings**



There is a minor increase in electricity and water consumption of less than 1% over year 2001 figures. This may be attributed to our increase in activities. We will identify the cause of the increase and take appropriate measures. The gas and paper consumption were however reduced by 12 % and 6.2 % respectively from the 2001 level.

• **Vehicle Emission**

At EMSD we provide maintenance service for the 6,200 Government vehicle fleet. We play a significant role in ensuring their emissions are reduced to a minimum. The number of diesel vehicles in the Government fleet has decreased from 2,218 to 1,238 in year 1999 to 2002 respectively.



• **Renewable Energy**



500 m² of mono-crystalline and poly-crystalline silicon photovoltaic panels have been installed as a pilot project by EMSD at Wanchai Tower to generate 55 kW of electricity from solar energy.

The performance of the system will continue to be monitored by EMSD until early 2004. It is estimated that this project has helped to reduce annually 23,000 kg of carbon dioxide, which would otherwise be generated from the power stations. A territory-wide wind measurement programme will be carried out to collect site specific data for assessment of wind resources at selected sites. The preparatory work has already commenced. The wind measurement programme is scheduled for completion by mid 2004.

- **Wider-use of Water-Cooled Air Conditioning Systems**

EMSD has been actively involved in the study and implementation of Water-cooled Air-Conditioning Systems (WACS). Since a pilot scheme was launched in June 2000 to allow the use of fresh-water for evaporative cooling in non-domestic developments in 6 designated areas, response has been quite positive. The scheme was extended for another two years to May 31 2004 and the geographical coverage was expanded to cover a total of 45 designated areas. WACS has the potential to reduce greenhouse gas emissions by 600,000 tonnes a year and save 7 to 32% of energy used for air-conditioning.

- **New Headquarters at Kai Tak**



EMSD will relocate to a new headquarter in the Kai Tak area in 2004. A task force has been established to oversee the project in the design stage to ensure full compliance to environmental regulatory requirements as well as making the new headquarter a showcase of the latest E&M technologies and best practices in energy efficiency. Various new and renewable energy technologies including photovoltaic panels, a small wind turbine, binary ice storage air-conditioning system and daylight pipe are being considered for incorporation in the new headquarter.

- **Energy Saving Competition**

To support Government initiatives, EMSD will undertake to organize a Government-wide energy saving promotion programme this year. The programme aims at promoting energy efficiency equipment and raising awareness in energy savings in government premises.

- **Occupational Health and Safety**

Occupational health and safety is closely akin to working environmental conditions in the workplace. Under the IMS umbrella, all employees irrespective of their location and rank, are also charged with ensuring full compliance with the legal regulations as well as the internal and external Occupational Health and Safety (OH&S) requirements. In order to make EMSD an even safer place to work, we have launched internal OH&S promotional and assessment programmes last year to help raise employee awareness and interest on OH&S and to put them into practice in all work activities.

Regulatory Authority - *Promoting Energy Efficiency in the Public*

- **Energy Efficiency Equipment**

We have introduced the latest energy efficient technology applications, like the T5 fluorescent lamps and electronic ballasts into Hong Kong. We are trying out new energy efficiency technologies.



- **Energy Efficiency Labelling Scheme**



The scheme was initially introduced for household appliances in 1995. It was extended to office equipment in December 2000. Last year, the scheme was further extended to cover petrol passenger vehicles. For details and information pamphlets on Energy Efficiency Labelling Scheme (EELS), please visit our website <http://www.emsd.gov.hk>.

- **Energy Benchmarking Studies and Database**

Realising the importance of energy efficiency and conservation, EMSD commissioned a study in 2000 to obtain more in-depth data on energy use in commercial and transport sectors. The study was completed in November 2002 and a web-based **benchmarking tool** has been made available for general public to benchmark their energy consumption with others in the same business category.

Energy Consumption Indicators and Benchmarks

The Energy Consumption Indicators and Benchmarks provide in-depth data about energy consumption levels and the extent of the use of energy efficient equipment among the selected groups. This enables the Government to set future targets and implement measures to reduce energy consumption of the society.

Service Provider - Supporting our Customers

- **A/C System Enhancement in City Hall**



We understand the importance of plant efficiency and the ways to reduce electricity consumption. Our Municipal Sector Division assisted the LCSD client at City Hall to reconfigure the chilled water circuit and rebalance the cooling load distribution in their air-conditioning system to improve operational efficiency to save 67,000kWh of electricity annually. The modification also results in extended life expectancy of the air-conditioning equipment.

- **Indoor Air Quality**

We monitor the indoor air quality (IAQ) of the client buildings as a value-added service by undertaking regular IAQ survey on critical parameters and render technical advice on improvement measures where appropriate since mid-1990s.

- **Vehicle Maintenance**

The professional vehicle maintenance service provides our Government clients with the confidence of safety, and reliability of their vehicle fleets. This also ensures vehicle fleets of essential services are available to serve the community twenty four hours a day, seven days a week.



- **Energy Efficiency Projects**



We have helped our customers identifying Energy Management Opportunities (EMO) in their premises. We render our clients recommendations to improve their overall energy efficiency and environmental performance with the latest technological options. A recent project includes the application of binary ice refrigeration for air-conditioning and heat pumps for water heating purpose.



Environmental Report Key Results in 2002

- About This Report
- Organizational Profile
- Environmental Policy
- Our Vision
- Environmental Management
- Our Triple Role
- Corporate Citizen
- Regulatory Authority
- Service Provider
- Key Results in 2002
- Awards and Recognition
- Independent Assessment on Environment Report
- Data and Facts
- Feedback

Below is a review of the progress made on our major activities in 2002.

Main Objectives	Target	Results in 2002
Protecting the environment	<ul style="list-style-type: none"> ● Reduce vehicle emissions. ● Sustain a collection and recycling system. ● Increase the use of recycled paper. ● Establish a collection system for spent fluorescent lamps 	<ul style="list-style-type: none"> ● Downward trend of diesel vehicles in the Government vehicle fleet. ● Collection and recycling system was well maintained and sustained throughout the year. ● Widespread use of recycled paper within EMSD. ● Established best practice in collection and handling of spent mercury lamps.
Conserving the environment	<ul style="list-style-type: none"> ● Reduce energy consumption or maintain at current levels. ● Promote and implement energy efficiency labelling schemes (EELS) for household appliances and office equipment. ● Promote and implement energy management opportunities (EMO). ● Promote and implement the Hong 	<ul style="list-style-type: none"> ● Downward trend in towngas consumption. Growth of electricity consumption was less than 1 %. ● Over 1,600 energy efficiency labels have been issued to date and new EELS for dehumidifier and laser printer have been launched. Petrol passenger vehicle was incorporated in the scheme. ● New energy efficiency technologies were applied for EMO such as binary ice,

	Kong Energy Efficiency Registration Scheme for Buildings (HKEERSB).	variable speed drive, heat pump, smart lighting sensor and T5 lighting. <ul style="list-style-type: none"> Over 150 HKEERSB Certificates issued.
Improving the environment	<ul style="list-style-type: none"> Improve Indoor Air Quality for buildings in Hong Kong. Establish proper measures to reduce air, soil and water pollution in our housekeeping. Support cleaner fuel options for vehicles. Promote the energy efficiency of air-conditioning systems such as the wider-use of water-cooled systems. Introduce new and renewable energy 	<ul style="list-style-type: none"> Satisfactory IAQ survey result and preparing certification of satisfactory Government buildings. No abnormality reported in 2002. Almost 90% of diesel taxis were replaced with LPG models. LPG filling stations increased from 12 in 1999 to over 43 at the end of 2002. The pilot scheme was extended to May 2004 and expanded to cover a total of 45 designated areas. A solar energy system was installed to demonstrate the applicability of renewable energy technologies.



[| 中文](#) | [Feedback](#) | [Home](#) |

Environmental Report

- [About This Report](#)
- [Organizational Profile](#)
- [Environmental Policy](#)
- [Our Vision for the Future](#)
- [Environmental Management](#)
- [Our Triple Role](#)
- [Corporate Citizen](#)
- [Regulatory Authority](#)
- [Service Provider](#)
- [Key Results in 2002](#)
- [Awards and Recognition](#)
- [Independent Assessment on Environment Report](#)
- [Data and Facts](#)
- [Feedback](#)

Awards & Recognition

• IMS corporate certification

After our successful corporate certification to ISO 9001, ISO 14001 and OHSAS 18001 standards over the past three years, we began to integrate the three management system into one last year and successfully completed the IMS corporate certification in August 2002 and was awarded an IMS Corporate Certificate in November 2002 by HKQAA.



• Donation to Sowers Action

At EMSD we send the empty laser and inkjet cartridges to the re-manufacturer who will donate \$13 to Sowers Action for each cartridge to help building and repairing schools in the remote areas of China to provide a safe learning environment for those needy school children to raise their education standard.

• Hong Kong Occupational Health and Safety Award 2002



The EMSD won two bronze awards in the Hong Kong

Occupational Health and Safety Award 2002, organised by the Occupational Health and Safety Council in the areas of Safety Management System and Safety Technological Achievement categories plus the Best Presentation Merit Award during the award presentation ceremony.



Environmental Report

- About This Report
- Organizational Profile
- Environmental Policy
- Our Vision
- Environmental Management
- Our Triple Role
 - Corporate Citizen
 - Regulatory Authority
 - Service Provider
- Key Results in 2002
- Awards and Recognition
- Independent Assessment on Environment Report
- Data and Facts
- Feedback

Independent Assessment on Environmental Report

Purpose of the verification



P-E Handley Walker (HK) Ltd. was commissioned by the Electrical and Mechanical Services Department (EMSD) to perform an independent verification on the report layout, wordings and the accuracy of the data in the context of a public corporate environmental report 2002.

Scope of the verification

The verification is focussed on coverage of the report and accuracy of the reporting system on environmental performances.

The relevant documents of the key information and data from all Divisions of the EMSD and other Government Departments were reviewed and the pertinence of the data to the calendar year 2002 was also verified.

Verification Statement of the Corporate Environmental Report

Our verification results confirm that the data presented is consistent with the materials and the system used to collect, maintain and analyze the data is also effective.

Our verification results also indicate that the EMSD has presented a comprehensive, reasonable and balanced disclosure of information of their Environmental Performances.

EMSD has made a notable achievement in meeting its environmental objectives and targets in fulfillment of its environmental policy. From the key results in 2002, EMSD has demonstrated its incremental approach in achieving higher and wider environmental performances especially for its triple role as Corporate Citizen, Regulatory Authority and Service Provider.

During the verification process, we have noticed the office resource consumption is relatively under control after the expansion of new service depots and various types of Demand Side Programme have been launched by the two power companies with the effort of EMSD.

Particularly noteworthy is the Department' s effort in the year of 2002 in achieving the IMS Corporate Certification and the Hong Kong Occupational Health and Safety Award, establishing collection system for spent mercury lamp, providing the Energy Consumption Indicators and Benchmarks tool in its web-site, and introducing new and renewable energy such as solar energy system.

Recommendations for future Reports

EMSD has established communication channels to consolidate the interests of stakeholders including the public on regular basis. It is recommended that the perceptions and expectations of relevant stakeholders about the EMSD Environmental Performances can be included in future Environmental Report.



Tommy Lau
Principal Consultant
Compliance Services
P-E Handley Walker (HK) Ltd.



| 中文 | Feedback | Home |

Environmental Report

- About This Report
- Organizational Profile
- Environmental Policy
- Our Vision for the Future
- Environmental Management
- Our Triple Role
- Corporate Citizen
- Regulatory Authority
- Service Provider
- Key Results in 2002
- Awards and Recognition
- Independent Assessment on Environment Report
- Data and Facts
- Feedback

Key Environmental Figures

Office Waste Recycling

	Waste Paper (kg)	Used Batteries (kg)	Tone Cartridges ⁽¹⁾ (nos.)	Room Cooler (nos.)	Unserviceable Computer (nos.)	Refrigerator (nos.)
1999	5,891	--	--	1,105	120	252
2000	17,362	5,99	173	1,065	213	296
2001	26,898	3,122	1,276	1,470	347	335
2002	27,220	3,335	1,355	1,316	567	677

¹⁾ Particular types only.

[<View Chart>](#)

Industrial Waste Recycling

	Spent Vehicle Battery (kg)	Metal Scrap (kg)	Waste Oil ⁽²⁾ (l)	Damaged Traffic Bollard (nos.)	Condemned Vehicle (nos.)	Used Vehicle Tyre (kg)	CFC Refrigerant (kg)	⁴⁾ Other Chemical Wastes (kg)
1999	3,696	47,805	155,500	3,920	846	442,350	1,000,000 ⁽³⁾	--
2000	3,920	45,401	142,387	4,225	842	370,485	1,955	21,448
2001	4,880	56,097	236,750	4,040	731	440,910	2,089	30,040
2002	5,200	59,440	169,857	4,350	1,141	507,420	3,259	16,385

²⁾ Increase in activities.

³⁾ Aggregated amount up to 1999 for the CFC replacement programme.

⁴⁾ Oily wastes, etc.

[<View Chart>](#)

Office Resource Consumption

	Electricity (kWh)	Town Gas (MJ)	Water (m ³)	⁹⁾ Paper (ream)	¹⁰⁾ Envelope (nos.)
1999	10,681,557	1,422,816	84,216	38,323	355,161
2000	10,370,343	1,336,176 ⁽⁷⁾	103,535	28,355	233,522
2001	11,516,845 ⁽⁵⁾	1,506,624 ⁽⁸⁾	92,525	27,088	327,554
2002	11,634,922 ⁽⁶⁾	1,324,416	93,335	25,402	346,510

⁵⁾ New depots in service. ⁶⁾ Downward-trend in electricity and gas consumption per capita values since 1999, slightly upward in consumption in 2002.

⁷⁾ Boiler plant replacement ⁸⁾ Increase in activities ⁹⁾ A4 size.

¹⁰⁾ Periodical fluctuation in consumption due to publicity campaigns (e.g. electrical and gas safety).

[<View Chart>](#)

Industrial Resource Consumption

	Paint & Solvent (l)	Kerosene (l)	Lubrication Oil (l)	Grease (kg)	Refrigerant R22,R134a (kg)	¹¹⁾ Industrial Gas (m ³)
1999	31,044	--	124,849	1,362	592	1,898
2000	31,580	5,717	139,384	1,732	30,509	2,650
2001	35,272	918	153,130	802	20,490	3,721 ⁽¹²⁾
2002	11,526	--	144,660	1,579 ⁽¹²⁾	23,849 ⁽¹²⁾	2,361

¹¹⁾ Oxygen, Argon & Acetylene. ¹²⁾ Periodic fluctuation due to operational need.

[<View Chart>](#)

Vehicle by Engine Type

	Petrol		Diesel		LPG		Electric		Others [@]	
	Public*	Government#	Public*	Government#	Public*	Government#	Public*	Government#	Public*	Government#
1999	345,008	5,330	149,188	2,218	329	--	--	1	--	--
2000	359,015	4,743	146,172	1,662	4,247	2	52	--	54	--
2001	368,956	4,667	135,143	1,578	14,172	5	43	--	1	--
2002	370,284	4,475	131,350	1,238	17,112	20	57	--	8	--

* Data from Transport Department. # Vehicle maintained by EMSD. @ Wankel engine.

[<View Chart>](#)

Vehicle Service Resource Consumption

	Sulphuric Acid (kg)	¹³⁾ Battery Electrolyte (l)	Tubeless Tyre (nos.)	Outer Cover Tyre (nos.)	Inner Tube (nos.)
1999	5,680	--	10,811	4,122	1,160
2000	4,855	860	11,488	2,859	534

2001	435	6,370 ⁽¹⁴⁾	23,936 ⁽¹⁵⁾	6,182	322
2002	--	2,924	9,405	1,743	1,805 ⁽¹⁵⁾

13) 4-litre pack.

14) Increase in use of package-type electrolyte battery instead of sulphuric acid.

15) Periodical fluctuation in operation need.

[<View Chart>](#)

Note: Some resources consumption level remain less satisfactory; however, it should be mentioned that since EMSD is an engineering service provider, the facilities or equipment we serviced may vary with time and may be beyond our reasonable jurisdiction. Thus, the figures depicted may not correlate directly with our performance. When studying these figures, it should be noted that they reflect the consumption of a particular resource or waste product collected and recycled in our operation.

Integrated Management System

Unit/Division/Sub-division	ISO9001 System Certificate No.:	ISO14001 System Certificate No.:	OHSAS18001 System Certificate No.:
Corporate Certificate for EMSTF	HC003	HC006	HC011
Airport Sector Division	CC1467	CC1803	CC2051
Corporate Services Units	CC1765	CC1765	CC2067
General Engineering Services Division	CC2008	CC2021	CC2091
Health Sector Division	CC384	CC1804	CC2087
Municipal Sector Division	CC1457	CC1820	CC2070
Project Division	CC887	CC1839	CC2094
Regulatory Services	Implemented	CC1985	Implemented
Supplies Sub-division	CC1200	CC1845	CC2097
Transport, Security and Central Services Division	CC1118	CC1826	CC2100
Vehicle Engineering Division	CC1220	CC1805	CC2077

Feedback Form on EMSD's Corporate Environmental Report 2002

1. Which aspect of the report do you find most useful?

	Yes	No	No comment
About this report/Scope of this report	<input type="radio"/>	<input type="radio"/>	<input checked="" type="radio"/>
Organizational Profile	<input type="radio"/>	<input type="radio"/>	<input checked="" type="radio"/>
Environmental Policy	<input type="radio"/>	<input type="radio"/>	<input checked="" type="radio"/>
Our Vision	<input type="radio"/>	<input type="radio"/>	<input checked="" type="radio"/>
Environmental Management	<input type="radio"/>	<input type="radio"/>	<input checked="" type="radio"/>
Our Triple Role	<input type="radio"/>	<input type="radio"/>	<input checked="" type="radio"/>
Key Results in 2002	<input type="radio"/>	<input type="radio"/>	<input checked="" type="radio"/>
Awards and Recognition	<input type="radio"/>	<input type="radio"/>	<input checked="" type="radio"/>
Data and Facts	<input type="radio"/>	<input type="radio"/>	<input checked="" type="radio"/>

2. Which aspect of the report would you like more information?



3. How do you think EMSD could further improve our environmental and OHS performance?



4. Which part of the report do you find most interesting?

	Yes	No	No comment
About this report/Scope of this report	<input type="radio"/>	<input type="radio"/>	<input checked="" type="radio"/>
Organizational Profile	<input type="radio"/>	<input type="radio"/>	<input checked="" type="radio"/>
Environmental Policy	<input type="radio"/>	<input type="radio"/>	<input checked="" type="radio"/>
Our Vision	<input type="radio"/>	<input type="radio"/>	<input checked="" type="radio"/>
Environmental Management	<input type="radio"/>	<input type="radio"/>	<input checked="" type="radio"/>
Our Triple Role	<input type="radio"/>	<input type="radio"/>	<input checked="" type="radio"/>
Key Results in 2002	<input type="radio"/>	<input type="radio"/>	<input checked="" type="radio"/>
Awards and Recognition	<input type="radio"/>	<input type="radio"/>	<input checked="" type="radio"/>
Data and Facts	<input type="radio"/>	<input type="radio"/>	<input checked="" type="radio"/>

5. Do you find the report informative?

Yes No No comment

6. Do you have any new initiatives on indoor air quality, energy efficiency, renewable energies and the use of electricity or other fuel resources consumption?

Yes No No comment

7. Other comments and suggestions, please specify.

8. How can we convey our feedback to your comments/suggestions?

(Please provide email or contact detail for us to follow up.) - Optional

Readers without internet e-mail access, please send your hardcopy feedback form to Quality & Research Sub-division, EMSD. (Attn: Quality and Research Manager, Fax: 2882 1574)

