





Environmental Report 2006

Environmental Report 2006

Chapter 1

Introduction and Controlling Officer's Profile of Key Responsibilities

Chapter 2

Environmental Goal and Policy

Chapter 3

Environmental Management, Performance Analysis and Targets / Milestones

Chapter 4

Towards a Quality Future

Annex

Back to LCSD

Chapter 1

Introduction and Controlling Officer's Profile of Key Responsibilities

1.1 The Leisure and Cultural Services Department (LCSD), set up under the Home Affairs Bureau (HAB), is responsible for the territory-wide provision of recreational, sports and cultural facilities and services.

Vision, Mission and Values

1.2 Our **vision** is to :

- provide quality leisure and cultural services that are commensurate with Hong Kong's development as a world-class city and events capital.

1.3 Our **mission** is to:

- enrich life by providing quality leisure and cultural services for all;
- promote professionalism and excellence in leisure pursuits and cultural services;
- promote synergy with sports, cultural and community organisations to enhance the development of arts and sports in Hong Kong;
- preserve cultural heritage;
- beautify the environment through tree planting;
- achieve a high level of customer satisfaction; and
- build a highly motivated, committed and service-oriented workforce.

1.4 Our **core values** are:

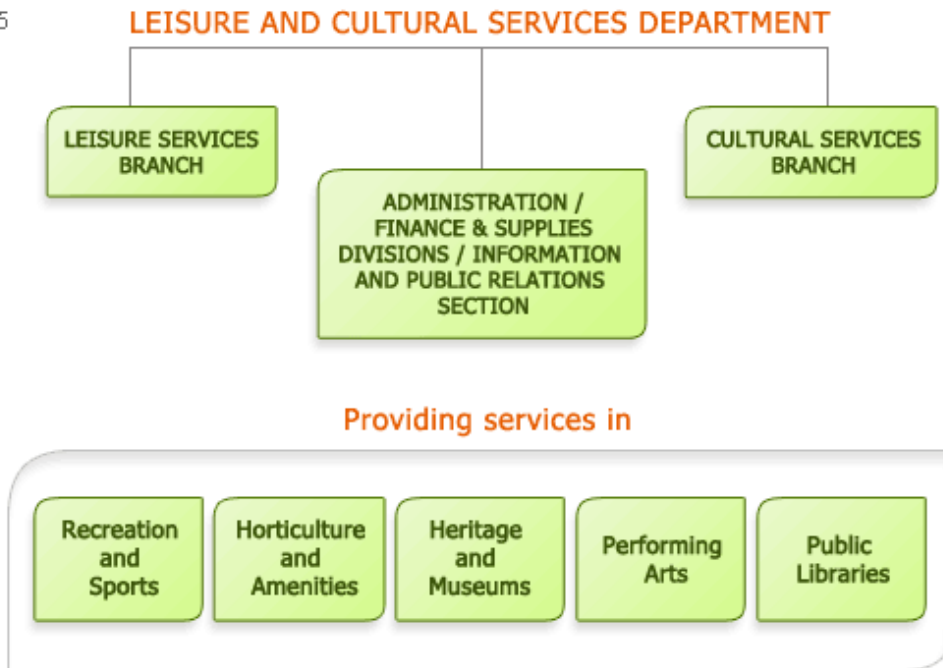
- Customer focus
We continue to respond to customers' needs and pledge to provide services in a courteous and user-friendly manner.
- Quality
We pledge to deliver high-quality services in a cost-effective manner.
- Creativity
We continue to encourage diversity and to value original ideas.
- Professionalism

We uphold the highest standards of professionalism and ethics while maintaining a high level of performance.

- Result-oriented
Our focus at all times is to achieve the best results possible.
- Cost-effectiveness
We are committed to reaching our goals in an efficient and cost-effective manner.
- Continuous improvement
We seek to continually improve our services and to respond proactively in meeting the changing needs of the community.

Overall View of Our Operation

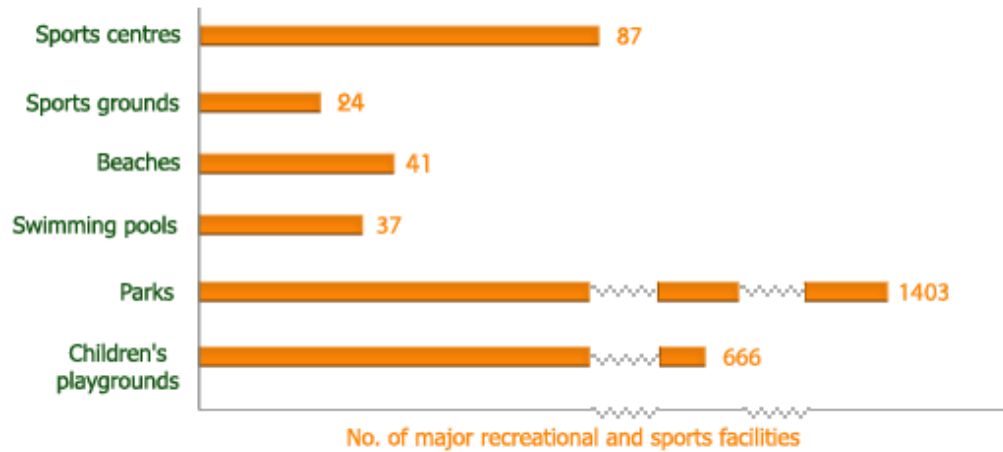
1.5



1.6 The Department organises and promotes a wide range of leisure and cultural activities for people of all ages with a view to enhancing arts appreciation and enriching the quality of life of the community. The major responsibilities of the Department are set out in the paragraphs below.

Recreation and Sports

1.7 We develop and manage recreational and sports facilities and organise a wide range of leisure activities in order to promote recreation and sports at all levels throughout the community. As at 31.12.2006, the number of major recreational and sports facilities under our management was:



Horticulture and Amenities

1.8 We promote appreciation and conservation of nature and greening of Hong Kong through planting of trees, shrubs and other plants in public parks and amenity areas, and through organising a wide range of community greening activities. In 2006, we maintained a total of 1 556 hectares of amenities area and planted about 3.34 million trees, shrubs and annuals.

Heritage and Museums

1.9 We preserve heritage and provide museum services with a view to promoting appreciation of heritage, arts and culture. In 2006, we managed 16 museums including a film archive.

Performing Arts

1.10 We promote arts and culture through the provision of cultural facilities and services, and presentation programmes. In 2006, we managed 15 performing arts venues and organized a total of 4 137 cultural presentations of music, dance, Cantonese and western opera, drama, theatre and multimedia performing arts programmes.

Public Libraries

1.11 We provide, manage and develop library services to meet the community needs for education, information, research and recreation; offer library extension activities to all ages; and promote reading and literary arts. We managed 76 public libraries and the stock of books as at 31.12.2006 was 10.4 million and that for multimedia materials was 1.5 million.



Environmental Report 2006

Environmental Report 2006

Chapter 1

Introduction and Controlling
Officer's Profile of
Key Responsibilities

Chapter 2

Environmental
Goal and Policy

Chapter 3

Environmental Management,
Performance Analysis and
Targets / Milestones

Chapter 4

Towards a Quality Future

Annex

[Back to LCSD](#)

Chapter 2 Environmental Goal and Policy

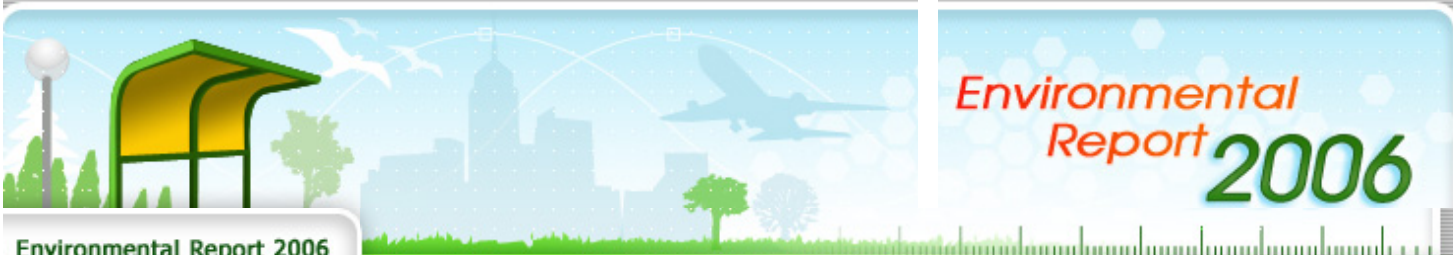
Environmental Goal

2.1 Our environmental goal is to improve our living environment and to enrich the quality of life of our community by providing a wide range of leisure and cultural facilities and activities throughout the territory. We take into account environmental considerations from project inception to management/operation to minimise pollution, conserve resources, protect the natural environment and promote the appreciation of the beauty of our environment.

Environmental Policy

2.2 In meeting our goal, we are committed to:

- (A) Promoting greening and horticulture;
- (B) Preserving assets of our heritage;
- (C) Providing aesthetically pleasing open space;
- (D) Practising waste reduction and energy saving; and
- (E) Minimising air and noise pollution in organising leisure and cultural activities.



Environmental Report 2006

Environmental Report 2006

Chapter 1

Introduction and Controlling Officer's Profile of Key Responsibilities

Chapter 2

Environmental Goal and Policy

Chapter 3

Environmental Management, Performance Analysis and Targets / Milestones

Chapter 4

Towards a Quality Future

Annex

[Back to LCSD](#)

Chapter 3

Environmental Management, Performance Analysis and Targets / Milestones

(A) Promoting greening and horticulture

- 3.1 In promoting greening and horticulture, we have four areas of work. They are :
- upgrading of existing landscape areas;
 - massive planting programme;
 - education & promotion on environmental protection; and
 - greening activities.

3.2 Up-grading of Existing Landscape Areas

Performance Targets (Year 2006)	Actual Performance (Year 2006)
<ul style="list-style-type: none"> • Up-grading of 32 hectares of existing landscape areas. 	<ul style="list-style-type: none"> • A total of 45 hectares of existing landscape area had been upgraded.

Performance Analysis in 2006

- The Department's target was over-achieved through the combined effort of district staff and regional landscape teams, and placing more resources and effort on improving the environment.

Performance Targets in 2007

The Department's targets in 2007 are:

- 45 hectares of landscape areas will be upgraded.
- 35 prominent roadside amenity areas and 9 vacant government sites with the total area of about 2.7 hectares will be identified for landscape improvement.
- 15 pedestrian footbridges in various districts will be beautified with portable planters.

3.3 Massive Planting Programme

Performance Targets (Year 2006)	Actual Performance (Year 2006)
<ul style="list-style-type: none"> To plant 10 000 trees and 3 260 000 shrubs and annuals. 	<ul style="list-style-type: none"> Target met. (breakdown at Annex I)

Performance Analysis in 2006

- The problem of sourcing large flowering trees was overcome by service contracts that covered the supply of plants and provision of manpower for planting large trees.

Performance Targets in 2007

The Department's targets in 2007 are:

- to plant another 10 000 trees;
- to plant shrubs and annuals up to 3.34 million; and
- to emphasize planting of flowering trees with a view to enhancing the visual impact with more seasonal colours.

3.4 Education & Promotion on Environmental Protection

(I) Horticulture Courses for the General Public

Performance Targets (Year 2006)	Actual Performance (Year 2006)
<ul style="list-style-type: none"> To organise 35 horticulture courses for 1050 participants. 	<ul style="list-style-type: none"> Organised 36 courses for 1080 participants.

Performance Analysis in 2006

The courses were well-received by the participants.

Performance Targets in 2007

We plan to conduct 35 horticulture courses for 1050 participants from the general public for the year 2007. Details of the courses are publicized in the "Community Recreation and Sports Programme" booklet and the Department's webpage.

(II) School Guided Visits

Performance Targets (Year 2006)	Actual Performance (Year 2006)
<ul style="list-style-type: none"> To organise 650 guided visits for a target of 23 400 participants. 	<ul style="list-style-type: none"> Organised 620 guided visits for 21 639 participants.

Performance Analysis in 2006

The number of guided visits and participants had slightly dropped due to the temporary closure of four aviaries in early 2006 to prevent the spread of avian flu. School children were guided around Hong Kong Zoological & Botanical Gardens, Kowloon Park, Hong Kong Park, Tai Po Waterfront Park, Lower

Shouson Hill Nursery and Tung Tze Nursery. The content of the talk delivered during the guided visit was designed to relate to the syllabus of environmental education for primary schools, including the profile of plants and animals.

Performance Targets in 2007

We plan to conduct 620 visits for 21 000 primary school students in the year 2007. Programme details will be uploaded onto the webpage of the Department and hyper-linked to the webpage of Education Bureau.

(III) Outdoor Education Activity for Kindergarten

Performance Targets (Year 2006)	Actual Performance (Year 2006)
<ul style="list-style-type: none"> To organise 65 guided visits for 2 500 participants. 	<ul style="list-style-type: none"> Organised 46 guided visits for 1589 participants.

Performance Analysis in 2006

Children from kindergartens were arranged to join guided tours around Kowloon Park. Basic knowledge of plants was introduced. Children were also taught the manner and courtesy for visiting parks and the concept of environmental conservation. The number of guided visits and participants had dropped due to the temporary closure of four aviaries in early 2006 to prevent the spread of avian flu.

Performance Targets in 2007

We plan to conduct 50 visits for some 1 600 participants in the year 2007.

(IV) Programme for Interest Badge Courses for Brownies and Girl Guides

Performance Targets (Year 2006)	Actual Performance (Year 2006)
<ul style="list-style-type: none"> To organise 19 courses for 580 participants. 	<ul style="list-style-type: none"> Organised 19 courses for 454 participants.

Performance Analysis in 2006

The programmes provided a wide range of courses in gardening and arboriculture for Brownies and Girl Guides. It aimed at promoting the concept of nature conservation. Participants were involved in group discussions, lectures, guided visits and practical services. They learnt not only about plants and gardening but also problem-solving techniques.

Performance Targets in 2007

On the request of the Hong Kong Girl Guides Association, we will conduct 19 conservation courses for some 500 Brownies and Girl Guides in the year 2007.

(V) Seminar and Gallery on Environmental Protection

Performance Analysis in 2006

The Hong Kong University of Science & Technology organized a symposium on environmental issues for secondary schools in association with the Hong Kong Science Museum on 3 June 2006. The objectives were to promote students' interest in and understanding of the environmental issues in Hong Kong, and to increase their environmental awareness. Students of the participating schools presented

the methods and findings of their school-based programme on environmental studies related to their school and community. 113 students and teachers participated in the symposium.

The Hong Kong Jockey Club Charities Trust approved a grant of \$15 million in April 2004 for setting up The Jockey Club Environmental Conservation Gallery in the Hong Kong Science Museum. The Gallery seeks to communicate the importance of environmental conservation to the community at large and to advocate an environmental friendly lifestyle. In late 2006, the detailed design of the Gallery was completed. The Gallery is expected to be completed in 2008.

Performance Targets in 2007

The Science Museum will continue to organize symposium/seminars on environmental issues for schools.

The Science Museum will proceed with tendering of fabrication of the Jockey Club Environmental Conservation Gallery targeted for completion in 2008.

3.5 Greening Activities

Performance Analysis in 2006

Over 2 770 greening activities were organised, which exceeded the performance target of 2 650 for the year of 2006.

(a) Hong Kong Flower Show

The Hong Kong Flower Show 2006 was held from 3 to 12 March at Victoria Park attracting about 516 000 visitors. The Flower Show aimed at promoting public interest in horticulture and arousing an awareness of the conservation of the natural environment. Over 180 local and overseas horticultural organisations participated in the Show. The major attractions included colourful garden displays and flower arrangements staged by horticultural organisations, plant nurseries and flower clubs; beautiful plant exhibits; and floral art arrangements entered for competition by individuals and schools. A wide range of educational activities, musical performances and entertainment programmes were also provided for the enjoyment of visitors.

(b) Community Planting Day

To promote public awareness in greening, the Department organised 27 Community Planting Days in 2006. A total of 8 000 participants had planted 28 860 trees and shrubs in 18 Districts. The performance target of 26 Community Planting Day was met.

(c) Green Volunteer Scheme

Under this Scheme, Green Volunteers were recruited in 18 Districts to undertake simple horticultural maintenance tasks in parks and gardens, and serve as stewards in greening promotion activities. They were encouraged to participate in greening their own neighbourhood. The performance target of 300 voluntary greening activities with a total of 6 000 sessions of services provided by the volunteers was met in 2006.

(d) Greening School Subsidy Scheme

The Scheme was launched for schools and kindergartens to implement planting projects in their campuses with technical advice from horticultural instructors, and to organise greening activities. It aimed at fostering green consciousness among students. This Scheme was very popular and had attracted the participation of 746 schools and kindergartens in 2006.

(e) "One Person, One Flower" Programme

The Scheme aimed to enhance the knowledge of students about plants and cultivate their interests in growing them. In 2006, 350 000 seedlings were distributed for students to nurture at home or in school.

(f) Greening Hong Kong Activities Subsidy Scheme

The Scheme aimed at encouraging more greening activities organised by the local community. Eight organisations were subsidised under this Scheme in 2006 to organise greening activities. The original performance target was to subsidize five organisations.

(g) Greening Exhibitions and Talk

Greening exhibitions and talks on horticulture were organized at the Green Education and Resource Centre at Kowloon Park in 2006 with a view to educating and arousing public's awareness in greening. A total of 441 exhibitions and talks with 37 000 participants were organized.

(h) Community Garden Programme

To encourage the public to participate actively in greening activities at the neighbourhood level and adopt greening activities as part of daily life, 40 gardening courses were organized with 7 000 participants.

(i) Best Landscape Award for Private Property Development 2006

The Award aimed at promoting greening and environment conscious development in the private sector. It was launched in 2006 with 239 entries from private organizations.

(j) Outreaching Greening Promotional Activities

To promote greening and enhance public awareness in greening and environmental protection, 166 outreaching greening activities were delivered to organizations and schools in 2006.

(k) Harvest Carnival

To promote the community garden programme and encourage the public to participate in greening activities at the community level, two harvest carnivals were organized with 15 000 participants.

Performance Targets in 2007

The Department will continue to promote a green culture in the community through a series of educational and community involvement programmes. We target to organise 2 780 greening activities with 1 231 000 participants in 2007. Our plan is as follows -

(a) Hong Kong Flower Show

The Hong Kong Flower Show 2007 will be held from 16 to 25 March 2007 in Victoria Park and about 500 000 visitors are expected.

(b) Community Planting Days

A total of 26 Community Planting Days with 12 000 participants will be organised in 2007.

(c) Green Volunteer Scheme

Members of the public will be recruited as Green Volunteers in 18 Districts to perform simple garden maintenance in LCSD parks and playground, and to serve as stewards in greening activities organized by LCSD. A total of 300 voluntary greening activities with 6

000 sessions of voluntary services will be provided by volunteers in 2007.

(d) Greening School Subsidy Scheme

The Department aims to invite 740 schools to participate in this Scheme in 2007.

(e) "One Person, One Flower" Programme

The Department targets to distribute 350 000 seedlings to students in 2007.

(f) Greening Hong Kong Activities Subsidies Scheme

Six applications for subsidy to hold greening activities are expected from local organisations in 2007.

(g) Greening Exhibitions and talks

Greening exhibitions and talks on horticulture will be organized at Green Education and Resource Centre in 2007 with a view to educating and arousing the public's awareness in greening.

(h) Community Garden Programme

40 gardening courses under the programme with 7 000 participants will be organized in 2007.

(i) Outreaching Greening Promotional Activities

To promote greening and enhance public awareness in greening and environmental protection, the Department's target is to organize 173 outreaching greening activities in 2007.

(j) Harvest Carnival

The Department aims to organize one harvest carnival in 2007.

(B) Preserving Assets of Our Heritage

3.6 The Department, through its Antiquities and Monuments Office (AMO), is committed to preserving Hong Kong's cultural heritage. Under the Antiquities and Monuments Ordinance, the Antiquities Advisory Board (AAB) advises the Secretary for Development, the Authority, on matters relating to antiquities and monuments. The AMO works closely with AAB and acts as the Authority's executive arm under the Ordinance.

3.7 In addition, the AMO plays an important role in monitoring Environmental Impact Assessment (EIA) projects insofar as their impact on antiquities and monuments is concerned. The work involves inspecting cultural heritage sites, examining mitigation measures to remedy any possible damage to the sites and, conducting, where necessary, rescue excavations at archaeological sites and cartographic recording of historical buildings.

3.8 The AMO also organizes educational programmes to promote heritage preservation among the public.

Performance Target in 2006

3.9 The targets set for 2006 were -

- to declare 1 monument under the Antiquities and Monuments Ordinance;

- to excavate and monitor 180 archaeological sites;
- to issue 13 archaeological licences;
- to restore and maintain 60 historical buildings;
- to process 140 EIA projects;
- to organize 300 heritage educational programmes; and
- to publish 12 publications.

3.10 It is the Department's conviction that cultural heritage is very much part of our physical as well as cultural environment. Not only does it enhance our built environment and the natural landscape, it also provides an essential, finite and irreplaceable link between the past, the present and the future. It forms the basic points of reference for our cultural identity and traditions.

Actual Performance in 2006

3.11 The major projects of the year included the gazetting of Leung Ancestral Hall, Pat Heung, Yuen Long for declaration as a monument under the Antiquities and Monuments Ordinance; major restoration and improvement works projects at various declared monuments including Tang Chung Ling Ancestral Hall and Tin Hau Temple in Lung Yeuk Tau, Tang Ancestral Hall in Ping Shan, Leung Ancestral Hall in Pat Heung, St. John's Cathedral in Central, Tai Fu Tai in San Tin and Hau Mei Fung Ancestral Hall in Sheung Shui; technical support to a private restoration project for Liu Ying Lung Study Hall in Sheung Shui and conversion of Kom Tong Hall into Dr Sun Yat-sen Museum.

3.12 To save archaeological heritage from destruction by development projects, rescue archaeological excavation was conducted in Lam Tei, Tuen Mun and in Cheung Shue Tan, Tai Po before the sites were developed. Artefacts dating back to the prehistoric period and the Qing dynasty were recovered at those places respectively. In 2006, similar operations were carried out in Sai Kung, Tuen Mun, Cheung Chau, and Lamma Island to prevent the underground archaeological remains there from being damaged during the development of village houses at those sites. Excavation was conducted at Lam Tei in July 2005 and archaeological investigations were arranged at Pak Shek Kok in Tai Po and various village small house sites. Stone foundation of building structure associated with cultural remains of Qing and modern periods was unearthed at Lam Tei, Tuen Mun. Abundant prehistoric artefacts were retrieved from various small house sites at Sha Ha, Sai Kung.

3.13 An exhibition on archaeological discoveries in Sha Ha, Sai Kung was presented at the Thematic Exhibition Gallery of Hong Kong Heritage Discovery Centre (HDC) from October 2005 to April 2006. In addition, the winning entries of the Hong Kong Heritage Awards 2004 were showcased at the HDC from November 2005 to March 2006. From June to December 2006, the Cartographic Survey of Historic Buildings Exhibition was staged to introduce measured drawings and models of selected historic buildings in Hong Kong. The AMO also organized a number of special exhibitions on local heritage at the HDC in collaboration with non-governmental organizations. An exhibition entitled "Transforming Our Community" was jointly organized by the AMO and the Centre of Architectural Research for Education of the Elderly Environment and Excellence Ltd. at the Permanent Exhibition Gallery of the HDC from May to July 2006. Another exhibition entitled "Venice Biennale International Architecture Exhibition Hong Kong Response Exhibition" was jointly organized with the Hong Kong Institute of Architects at the Permanent Exhibition Gallery of the HDC from 8 December 2006 to 21 February 2007. A standing exhibition on Hong Kong's archaeology and built heritage is being prepared for inaugurating the grand opening of the centre in early 2008.

3.14 The AMO excavated and monitored 226 archaeological sites and issued 10 archaeological licences for various development projects. In addition, we processed 140 EIA reports and carried out 79 restoration/maintenance projects for historical buildings. We declared the Leung Ancestral Hall in Yuen Long as monument under the Antiquities and Monuments Ordinance. We also conducted 656 heritage educational programmes and produced 12 publications.

Performance Targets in 2007

3.15 The performance targets in preserving assets of heritage for 2007 are :

(a)	No. of buildings/structures declared as monuments	1
(b)	No. of archaeological sites excavated/monitored	180
(c)	No. of archaeological excavation licences issued	13
(d)	No. of historical buildings restored/maintained	60
(e)	No. of educational programmes	566
(f)	No. of publications	12

3.16 To achieve these targets, the Department, under the guidance of AAB, will continue to work closely with the bureaux and departments concerned, including the Development Bureau; Education Bureau; Home Affairs Department; Architectural Services Department; Environmental Protection Department; and Planning Department; as well as Hong Kong Tourism Board, private developers and land owners.

(C) Providing Aesthetically Pleasing Open Space

We achieve our objective through :

(I) Land use zoning and acquisition of land for open space development-

- We take an active role in negotiating with the Planning Department and Lands Department to acquire more quality and genuine open spaces at good locations with easy accessibility for recreational development.
- Special care has been and will continue to be taken to avoid taking over land which has either low potential for open space development or has excessive site constraints such as steep slopes, drainage reserves, road reserves and polluted sites for recreational use.
- As part of the Government's greening efforts, we have been working with Civil Engineering Development Department to provide simple landscaping to vacant government land in prominent/strategic position with no imminent/known development programme in the near future.

(II) Design of Aesthetically Pleasing Open Space

- We ensure that soft landscape areas are maximised in passive recreation areas. In general, 85% of the site will be used as landscape area.
- Conspicuous flowering and shade trees, colour foliage and flowering shrubs of hardy species will be chosen to create colour contrast and seasonal changes.
- Through careful design, selection of heavy standard trees and increase of planting density, instant greening for new projects will be achieved.
- When planning new open space projects, the facility will be designed and constructed with consideration to its environmental performance such as application of energy saving building services installation and use of environmental friendly materials. (e.g. recycled plastic seating benches, refuse bins, etc.) Wooden materials from regenerated forests will be used.

Actual Performance in 2006

3.18 In 2006, 9 open space projects (including capital works projects, minor works projects and sponsored projects) were completed, resulting in an increase of about 7.46 hectares of open space in Hong Kong.

Performance Target in 2007

3.19 In 2007, 15 open space projects will be completed, which will provide an additional 11.71 hectares of open space. A list of these projects is shown at [Annex II](#). Apart from new open space projects, there are on-going improvement and upgrading works to existing parks and playgrounds.

(D) Practising Waste Reduction and Energy Savings

3.20 Environment-related policies are reviewed and co-ordinated through the Departmental Committee on Environmental Efforts (DCEE). The committee also assists in promoting good practices and monitoring their implementation throughout the department. Under the DCEE, there is the Task Force on Energy Savings. It proactively explores ways to promote energy saving efforts, including conducting energy audits to identify good energy management practices.

3.21 In November 2005, the sixth Environmental Report was issued to cover detailed activities of the department in this area.

3.22 We have been paying much attention to green housekeeping, waste reduction and energy savings. We have adopted the following measures in pursuing waste reduction and in saving energy and natural resources:

(I) On paper saving

3.23 Good practices for economy in the use of paper are set out in Administrative Circular No. 8/2000 and Circular Memorandum 2/2005, which are re-circulated to staff periodically as a reminder. We promoted 'reduce and reuse' for saving paper. In 2006, the department's consumption of paper increased by 32.75% when compared with 2005. More paper was consumed in 2006 because of the commissioning of 16 major facilities/venues in 2006, holding of a considerable number of large-scale exhibitions, cultural and leisure activities (including rolling out of various activities to prepare for and promote the 2007 East Asian Games) which led to increase in paper consumption. Nevertheless, we met the target for shifting 30% of the total paper consumption from woodfree paper to recycled paper. We also made the following endeavors in 2006:

- a. Application of PCs, Intranet and e-mail were widely used in the department for internal and external communications, and conveyance of digital photographs and design works. This had not only contributed to office efficiency, but had helped save paper.
- b. Our Information and Public Relations Section had provided an electronic newspaper clipping services to the Department's Lotus Notes users to ensure that the number of hard copies is kept at a minimum through share reading.
- c. We produced e-versions of the departmental yearbook, departmental Christmas cards and Lunar New Year cards; hard copies were suspended.
- d. We recycled paper and library materials. In the year 2006, 557 115 kg of library materials were recycled. Moreover, the email notification service provided readers with the option of receiving overdue and reservation notices through e-mail and had thus economised on the use of paper. As at 31.12.2006, about 129 000 registered borrowers had opted for the service.
- e. Museums and Film Archive also reduced waste by recycling exhibition materials and placed collection boxes for collecting used guided maps/pamphlets disposed by patrons after their visits for recycling purpose.
- f. Performing arts venues and programming offices used electronic means to publicize performing arts programmes or to collect feedback. Unused flyers and house programmes left by patrons were collected for recycling purpose.
- g. In line with the Government's initiative of paper saving, suppliers were encouraged to adopt environment friendly measures in preparation of tender/quotation documents (such as using recycled paper) and minimize the use of packaging materials.

(II) On energy saving

3.24 We managed our resources responsibly with a view to preserving natural resources. We were mindful of our environmental objectives when planning new facilities and maintaining existing facilities.

Energy-saving building services installations and environmentally friendly materials were considered. However, owing to commissioning of new facilities (the number of major facilities/venues of the department has increased by 16 from 1882 in 2005 to 1,898 in 2006), reopening of some facilities after their closure for renovation works, installation of additional equipment, and higher utilization of facilities, the total electricity consumption of the department increased by 0.88% in 2006/07 when compared with 2005/06. Nevertheless, we have taken the following endeavours to save energy :

- a. High-efficiency lighting systems (fluorescent tubes with electronic ballasts, motion sensors and optical fibres) were used to achieve energy savings as far as possible. The operating hours of venue lightings were rationalized where appropriate to reduce electricity consumption.
- b. Generally, we maintained the 25.5°C office room temperature target set by the Government for the summer months. Where, for essential operational reasons and customer service purposes, deviation from the office room temperature standard was necessary in certain areas of specific venues such as museums, sports centres and performing arts venues, we worked closely with the Electrical and Mechanical Services Department (EMSD) to monitor the situation and adjust the room temperature to as close to 25.5°C as possible and appropriate.
- c. We have appealed for staff's support in adopting a more relaxed code of business attire and dress down in the summer for energy conservation and improving air quality in Hong Kong.
- d. Administration Circular on "Electricity Economy" and Office Green Tips were recirculated to staff to promote energy conservation.
- e. For Hong Kong Stadium, half of the lightings at the backstage area have been modified and arranged to be turned off during non-event days since April 2005 and half of the lightings in the office have been dismantled since December 2006 for energy saving purpose.
- f. The following measures were adopted in performing arts venues:
 - i. turning off the air conditioning system in the Main Foyer half an hour/one hour before the close of the venue when there are no performances/activities in the venues;
 - ii. shortening pre-cool time of the air conditioning system required on stage while maintaining fairly reasonable level of services; and
 - iii. maximising the use of natural light and turning off the lights in the venue where illumination level is acceptable.
- g. EMSD has conducted energy saving improvement works in sports centres, including the replacement of the aging condenser coil in Shek Tong Tsui Sports Centre in 2004 to improve the performance of air-conditioning system and save energy. Free cooling mode air-conditioning system has been adopted for the arena of Smithfield Sports Centre since 2005. Upon implementation of these energy saving measures in 2004 and 2005, the respective sports centres have saved more on energy consumption.
- h. All museums continued to exercise the following tight measures on energy saving:
 - i. disconnecting/switching off some of the lights in illuminated area at the public corridors and office area;
 - ii. switching off escalators during museum closing days when maintenance works are carried out;
 - iii. switching on and off the lights in the public area by phases;
 - iv. turning on and off the air-conditioning supply in office area by phases to reduce energy consumption;
 - v. adjusting temperature settings in working area to save energy on air-conditioning;
 - vi. shortening pre-cooling hours for galleries as deemed appropriate;
 - vii. installing speed control sensor for outdoor escalator; and
 - viii. using energy saving lamps inside the passenger lifts.
- i. The following energy-saving initiatives were implemented at the HQ building in 2006:
 - i. removing over 700 no. of fluorescent lamps in the common area;
 - ii. installing occupancy sensors on some floors to control the on/off of the lightings;

- iii. using environmental friendly construction materials and energy saving device for the new offices at G/F;
- iv. replacing the fluorescent lamps at the staircases and the car park by energy saving model;
- v. suspending the operation of a number of lifts during non-peak hours; and
- vi. separating the lighting control at the lavatories to have a better control on the illumination level.

(III) Other Green Measures

3.25 Other green measures adopted were listed below:

- a. We exercised vigilance in the use of water by regulating outflow of water taps and replacing them with timer-taps at our offices and venues as far as possible.
- b. We achieved water saving by planting drought tolerant species at suitable locations and using less water for water features in major parks.
- c. Works were conducted at beaches to connect sewer for disposal of sewage or shower water up to the requirement of Environmental Protection Department. It is estimated that the connection work for all beaches in Tsuen Wan will be completed in 2009.
- d. We issued good practices in energy saving for operational staff and contractors ([Annex III](#)). They are constantly reminded to follow the good practices to achieve waste reduction and savings.
- e. We promulgated on our Document Library a list of sales term contracts for waste disposal/recycling to facilitate sale/recycling of unserviceable items.
- f. We promoted the use of more green products such as solar cell electronic calculators and environmental-friendly pesticide for plants.
- g. We placed waste separation bins at about 375 venues including parks, playgrounds, sports grounds, beaches, swimming pools, sports centres, water sports centres, outdoor recreation centres, camps, other cultural venues and the headquarters building.

(IV) Action Blue Sky Campaign

3.26 On 27 November 2006, the Chief Executive signed the Clean Air Charter on behalf of the Government at the "Business for Clean Air" seminar organized by the Hong Kong General Chamber of Commerce. The Charter was initiated by the business sector in support of the Government's appeal to improve air quality in Hong Kong. In support of the campaign to improve air quality in Hong Kong, we implemented the following measures:

- a. All departmental light buses would gradually be replaced as they retire by LPG vehicles that have lower emission.
- b. We installed Diesel Oxidation Catalysts (DOC) on all Euro I & II emission standard diesel vehicles of our fleet, and planned to replace vehicles with Euro IV within 3 years.
- c. We issued instruction to all departmental drivers to switch off the engine while waiting to reduce emission.

(E) Minimising Air and Noise Pollution in Organizing Leisure and Cultural Activities

3.27 We monitored closely the generator and machinery installed for activities to ensure that dark smoke emission would not breach the prescribed requirement in the relevant Regulations.

3.28 We monitored the noise level of outdoor events and ensure they were within the limits set in the relevant Regulations.

3.29 We persuaded hirers of the Hong Kong Stadium to declare their events held at the Stadium as smoke-free events, and hirers and LCSd staff advised spectators not to smoke within the Stadium.



Environmental Report 2006

Environmental Report 2006

Chapter 1

Introduction and Controlling
Officer's Profile of
Key Responsibilities

Chapter 2

Environmental
Goal and Policy

Chapter 3

Environmental Management,
Performance Analysis and
Targets / Milestones

Chapter 4

Towards a Quality Future

Annex

Back to LCSD

Chapter 4 Towards a Quality Future

- 4.1 We will continue to work towards our environmental goal by:
- planting more trees and increasing the planting of shrubs and seasonal flowers with a view to enhancing the visual impact with more seasonal colours;
 - focusing our efforts of greening promotion on two aspects : family participation and local participation;
 - preserving more assets of our heritage;
 - providing more aesthetically pleasing open space for the enjoyment of the community; and
 - maintaining our efforts in practising waste reduction and saving energy and natural resources for promotion of a greener working environment.

4.2 We believe that with the targets and goals we set for ourselves, we will continue to contribute towards a more sustainable development in environmental protection in Hong Kong.

Comments and Suggestions

4.3 This report can be viewed at our homepage at www.lcsd.gov.hk. We welcome any comments and enquiries on this report. Please write to our Departmental Green Manager through any of the following channels:

Mail : 13/F, LCSD Headquarters Building, 1, Pai Tau Street, Shatin, N.T.

Fax : 2603 0642

E-mail : enquiries@lcsd.gov.hk



Environmental Report 2006

Environmental Report 2006

Chapter 1

Introduction and Controlling
Officer's Profile of
Key Responsibilities

Chapter 2

Environmental
Goal and Policy

Chapter 3

Environmental Management,
Performance Analysis and
Targets / Milestones

Chapter 4

Towards a Quality Future

Annex

[Back to LCSD](#)

Annex

[Annex I](#) | [Annex II](#) | [Annex III](#)

Annex I

Summary of Massive Planting Programme 2006

District	Tree	Shrubs	Annuals	Total
C&W	250	47 497	32 816	80 563
Wch	161	46 871	15 855	62 887
E	304	141 629	65 510	207 443
S	134	43 616	26 045	69 795
SSP	361	92 685	2 900	95 946
YTM	1 563	147 920	62 231	211 714
KC	42	163 424	19 260	182 726
WTS	347	176 901	7 500	184 748
KT	491	79 256	17 520	97 267
Is	734	458 310	28 350	28 350
TM	748	165 495	33 076	199 319
YL	550	31 460	9 650	41 660
KwT	324	171 918	7 052	179 294
TW	696	74 583	130 016	130 016
N	730	206 292	57 083	264 105
TP	481	137 648	44 289	182 418
ST	1 605	254 001	43 497	299 103
SK	486	311 638	54 881	367 005
	10 007	2 751 144	582 252	3 343 403



Environmental Report 2006

Environmental Report 2006

Chapter 1

Introduction and Controlling
Officer's Profile of
Key Responsibilities

Chapter 2

Environmental
Goal and Policy

Chapter 3

Environmental Management,
Performance Analysis and
Targets / Milestones

Chapter 4

Towards a Quality Future

Annex

[Back to LCSD](#)

Annex

[Annex I](#) | [Annex II](#) | [Annex III](#)

Annex II

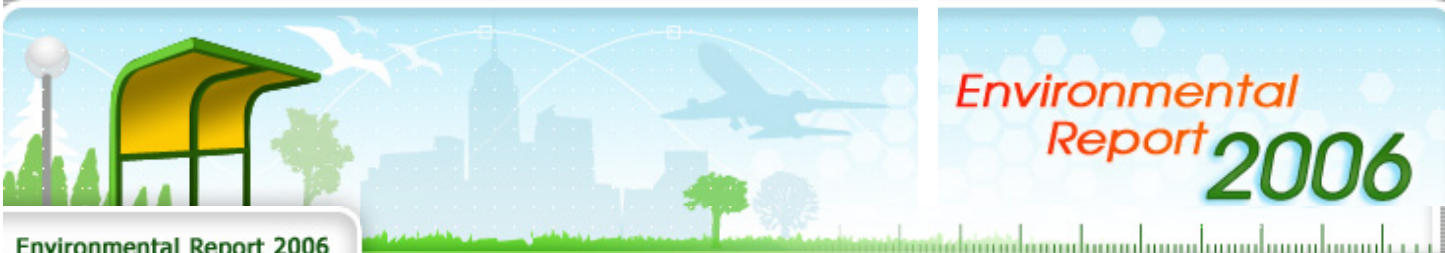
I. Open Space Projects Completed in 2006

Item No.	District	Project Title	Additional Open Space Area (ha)
1	WTS	Hammer Hill Road Park , Diamond Hill	3.50
2	KC	Sheung Lok Street Rest Garden (Site B) , Kowloon City	0.31
3	S	Development of Recreational Facilities on the Roof-Top of Ap Lei Chau No.2 Fresh Water Service Reservoir, Yuk Kwai Shan, Ap Lei Chau	0.10
4	YL	Construction of a 7-a-side Soccer Pitch in Area 107, Tin Shui Wai, Yuen Long	0.85
5	TW	SOA in Area 51, Ting Kau	0.93
6	YTM	Tsim Sha Tsui Promenade Beautification Project	0.14
7	C&W	Central Reclamation Phases III - Promenade between Pier 7 and 8	0.14
8	N	Local Open Space in Area 3, Fanling/Sheung Shui	0.05

9	KwT	District Open Space, Shek Lei Estate Phase 11, Kwai Chung	1.44
		Total	7.46

II. Open Space Projects to be Completed in 2007

<u>Item No.</u>	<u>District</u>	<u>Project Title</u>	<u>Additional Open Space Area (ha)</u>
1	YTM	Cherry Street Park , Tai Kok Tsui (Site A)	0.55
2	YL	Local Open Space in Areas 25, 25A and 25B, Tin Shui Wai	1.98
3	E	Siu Sai Wan Garden	0.61
4	YTM	Development of Allotment Garden at part of DOS at Ferry Street and Jordan Road, Kowloon	0.21
5	KwT	DOS at Tsing Yi North Low Level Fresh Water & Salt Water Services Reservoirs, Tsing Yi	0.28
6	SK	Local Open Space in Area 44, Tseung Kwan O	0.59
7	YL	Basketball Courts in Area 107 Tin Shui Wai	0.43
8	TM	Public Open Space, Fuk Hang Tsuen Road, Lam Tei, Tuen Mun	0.70
9	C&W	Central Reclamation Phases III - Promenade between Pier 8 and 9	0.06
10	N	Local Open Space in Area 29, Fanling/Sheung Shui	0.11
11	N	Local Open Space in Area 29A, Fanling/Sheung Shui	0.27
12	ST	Pak Shek Kok Waterfront Promenade	2.10
13	TP	Pak Shek Kok Waterfront Promenade	2.20
14	KwT	District Open Space adjoining Kwai Chung Estate	0.94
15	KwT	Local Open Space, Kwai Chung Estate Phase 3	0.68
		Total	11.71



Environmental Report 2006

Chapter 1

Introduction and Controlling
Officer's Profile of
Key Responsibilities

Chapter 2

Environmental
Goal and Policy

Chapter 3

Environmental Management,
Performance Analysis and
Targets / Milestones

Chapter 4

Towards a Quality Future

Annex

Back to LCSD

Annex

[Annex I](#) | [Annex II](#) | [Annex III](#)

Annex III

Proposed Good Practices to Operational Staff and Contractors

1. Choose energy efficient electrical appliances.
2. Do without unnecessary electrical appliances, e.g. electric pencil sharpener.
3. Use power-saving light bulbs.
4. Reduce lighting to minimum level required for illumination.
5. Switch off the air-conditioner and lights on leaving the room.
6. Use lead-free petrol.
7. Switch off vehicles or machines when not in use.
8. Save paper, print or photocopy only when necessary.
9. Write on both sides of every piece of paper before throwing it away.
10. Reuse envelopes.
11. Send waste paper for recycling.
12. Use your own cup. Avoid throw-away paper cup and other utensils.
13. Separate garbage in paper, can and bottle and send them to collection centers for recycling.
14. Reuse polythene bags if possible.
15. Put used batteries in litterbins. Do not leave them outdoor or throw them into water.
16. No smoking in public places.
17. Save water. Turn off water taps when not in use. Repair leaked water taps as soon as possible.
18. Minimize copies of circulars (e.g. by circulating a copy to staff).
19. Reuse loose minute jackets.
20. Avoid use of fax leader pages.
21. Minimize copies of flimsies and reference copies at meetings.
22. Photocopy on both sides of every piece of paper as far as possible.

23. Photocopy on the unused side of waste paper for internal use documents.