

Environmental Report 2007

Environmental Report 2007

Chapter 1

Introduction and Controlling Officer's Profile of Key Responsibilities

Chapter 2

Environmental Goal and Policy

Chapter 3

Environmental Management, Performance Analysis and Targets / Milestones

Chapter 4

Towards a Quality Future

Annex

Back to LCSD

Chapter 1

Introduction and Controlling Officer's Profile of Key Responsibilities

1.1 The Leisure and Cultural Services Department (LCSD), set up under the Home Affairs Bureau (HAB), is responsible for the territory-wide provision of recreational, sports and cultural facilities and services.

Vision, Mission and Values

1.2 Our **vision** is to :

provide quality leisure and cultural services that are commensurate with Hong Kong's development as a world-class city and events capital.

1.3 Our **mission** is to:

enrich life by providing quality leisure and cultural services for all;

promote professionalism and excellence in leisure pursuits and cultural services;

promote synergy with sports, cultural and community organisations to enhance the development of arts and sports in Hong Kong;

preserve cultural heritage;

beautify the environment through tree planting;

achieve a high level of customer satisfaction; and

build a highly motivated, committed and service-oriented workforce.

1.4 Our **core values** are:

Customer focus

We continue to respond to customers' needs and pledge to provide services in a courteous and user-friendly manner.

Quality

We pledge to deliver high-quality services in a cost-effective manner.

Creativity

We continue to encourage diversity and to value original ideas.

Professionalism

We uphold the highest standards of professionalism and ethics while maintaining a high level of performance.

Result-oriented

Our focus at all times is to achieve the best results possible.

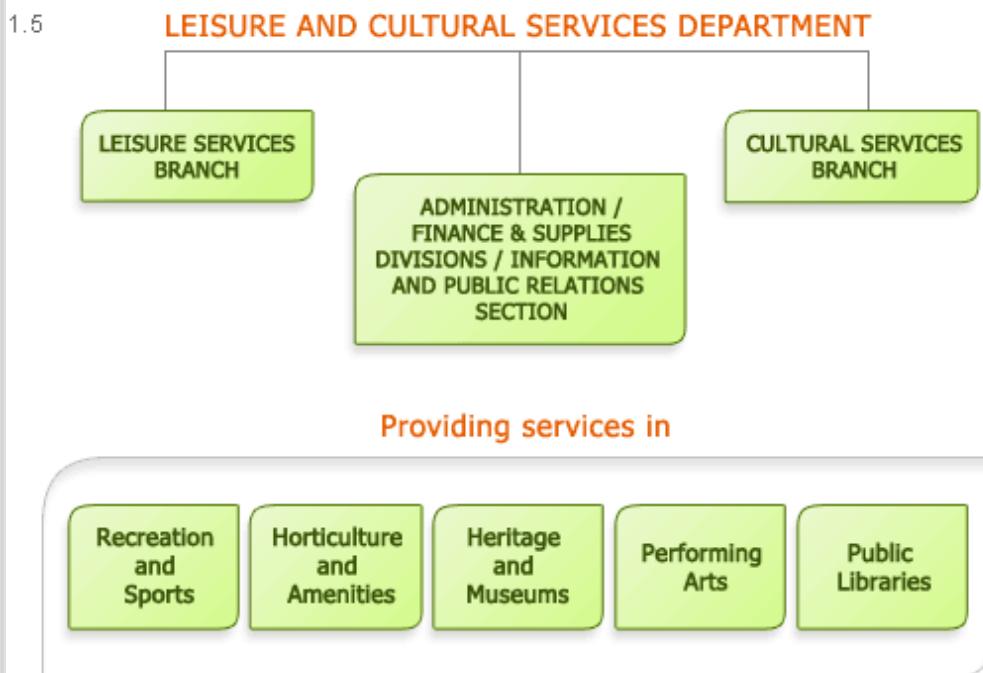
Cost-effectiveness

We are committed to reaching our goals in an efficient and cost-effective manner.

Continuous improvement

We seek to continually improve our services and to respond proactively in meeting the changing needs of the community.

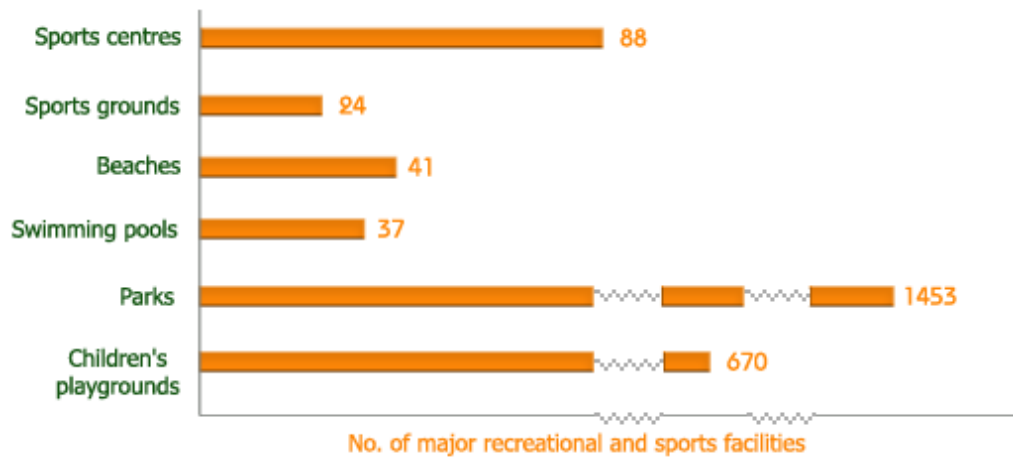
Overall View of Our Operation



1.6 The Department organises and promotes a wide range of leisure and cultural activities for people of all ages with a view to enhancing arts appreciation and enriching the quality of life of the community. The major responsibilities of the Department are set out in the paragraphs below.

Recreation and Sports

1.7 We develop and manage recreational and sports facilities and organise a wide range of leisure activities in order to promote recreation and sports at all levels throughout the community. As at 31.12.2007, the number of major recreational and sports facilities under our management was -



Horticulture and Amenities

1.8 We promote appreciation and conservation of nature and greening of Hong Kong through planting of trees, shrubs and other plants in public parks and amenity areas, and through organising a wide range of community greening activities. In 2007, we maintained a total of about 1 570 hectares of amenities area and planted about 3.43 million trees, shrubs and annuals.

Heritage and Museums

1.9 We preserve heritage and provide museum services with a view to promoting appreciation of heritage, arts and culture. In 2007, we managed 17 museums including two heritage centres and a film archive. We organized a total of about 130 exhibitions and 23 240 in-house and outreach programmes covering the themes of history, art, heritage and science.

Performing Arts

1.10 We promote arts through the provision of cultural facilities and presentation of programmes. In 2007, we managed 15 performing arts venues and organized a total of about 3,950 cultural presentations which include music, dance, Cantonese and western opera, drama, theatre and multimedia performing arts programmes.

Public Libraries

1.11 We provide, manage and develop library services to meet community needs for knowledge, life-long learning, information, research and recreation; offer library extension activities to all ages; and promote reading and literary arts. We managed 76 public libraries and the stock of books as at 31.12.2007 was 10.6 million and that for multimedia materials was 1.5 million.



Environmental Report 2007

Environmental Report 2007

Chapter 1

Introduction and Controlling
Officer's Profile of
Key Responsibilities

Chapter 2

Environmental
Goal and Policy

Chapter 3

Environmental Management,
Performance Analysis and
Targets / Milestones

Chapter 4

Towards a Quality Future

Annex

[Back to LCSD](#)

Chapter 2 Environmental Goal and Policy

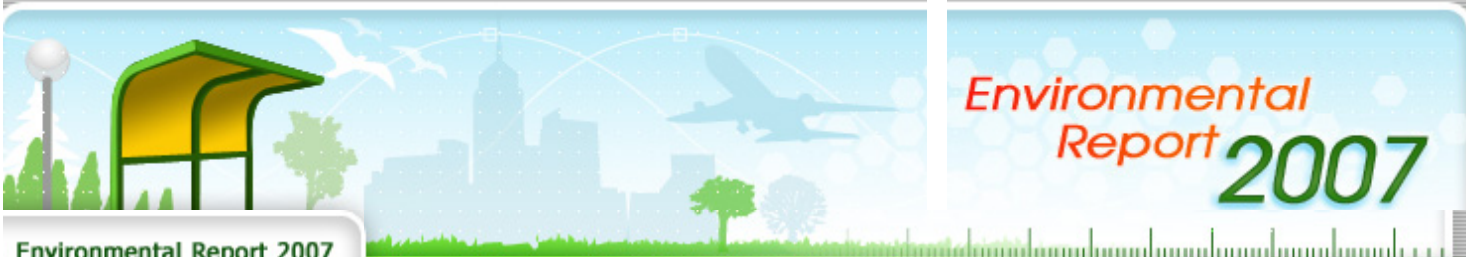
Environmental Goal

2.1 Our environmental goal is to improve our living environment and to enrich the quality of life of our community by providing a wide range of leisure and cultural facilities and activities throughout the territory. We take into account environmental considerations from project inception to management/operation to minimise pollution, conserve resources, protect the natural environment and promote the appreciation of the beauty of our environment.

Environmental Policy

2.2 In meeting our goal, we are committed to:

- (A) Promoting greening and horticulture;
- (B) Preserving assets of our heritage;
- (C) Providing aesthetically pleasing open space;
- (D) Practising waste reduction and energy saving; and
- (E) Minimizing air and noise pollution in organising leisure and cultural activities.



Environmental Report 2007

Environmental Report 2007

Chapter 1

Introduction and Controlling
Officer's Profile of
Key Responsibilities

Chapter 2

Environmental
Goal and Policy

Chapter 3

Environmental Management,
Performance Analysis and
Targets / Milestones

Chapter 4

Towards a Quality Future

Annex

Back to LCSD

Chapter 3

Environmental Management, Performance Analysis and Targets / Milestones

(A) Promoting greening and horticulture

- 3.1 In promoting greening and horticulture, we have four areas of work. They are :
- upgrading of existing landscape areas;
 - massive planting programme;
 - education & promotion on environmental protection; and
 - greening activities.

3.2 (I) Up-grading of Existing Landscape Areas

Performance Targets (Year 2007)	Actual Performance (Year 2007)
Up-grading of 45 hectares of existing landscape areas.	A total of 43 hectares of existing landscape area were upgraded.

Performance Analysis in 2007

The Department's actual performance generally followed the target of 2007 through the combined effort of district staff and regional landscape teams, and placing more resources and effort on improving the environment.

Performance Targets in 2008

The Department's targets in 2008 are:

43 hectares of landscape areas will be upgraded.

43 prominent roadside amenity areas and 9 vacant government sites with the total area of about 2.7 hectares will be identified for landscape improvement.

13 pedestrian footbridges in various districts will be beautified with portable planters.

3.3 (II) Massive Planting Programme

Performance Targets (Year 2007)	Actual Performance (Year 2007)
To plant 10 000 trees, 3 340 000 shrubs and annuals.	Target met (breakdown at Annex I).

Performance Analysis in 2007

The problem of sourcing large flowering trees was overcome by service contracts that covered the supply of plants and provision of manpower for planting large trees.

Performance Targets in 2008

The Department's targets in 2008 are:

to plant trees, shrubs and annuals up to 3.35 million; and

to emphasize planting of flowering trees with a view to enhancing the visual impact with more seasonal colours.

3.4 (III) Education & Promotion on Environmental Protection

(a) Horticulture Courses for the General Public

Performance Targets (Year 2007)	Actual Performance (Year 2007)
To organise 35 horticulture courses for 1050 participants.	Organised 32 courses for 955 participants.

Performance Analysis in 2007

The courses were well-received by the participants. More horticulture courses would be organized in 2008.

Performance Targets in 2008

We plan to conduct 35 horticulture courses for 1050 participants from the general public for the year 2008. Details of the courses are publicized in the "Community Recreation and Sports Programme" booklet and the Department's webpage.

(b) School Guided Visits

Performance Targets (Year 2007)	Actual Performance (Year 2007)
To organise 620 guided visits for a target of 21 000 participants.	Organised 638 guided visits for 21 368 participants.

Performance Analysis in 2007

School children were guided around Hong Kong Zoological & Botanical Gardens, Kowloon Park, Hong Kong Park, Tai Po Waterfront Park, Lower Shouson Hill Nursery and Tung Tze Nursery. The content of the talk delivered during the guided visit was designed to relate to the syllabus of environmental

education for primary schools, including the profile of plants and animals.

Performance Targets in 2008

We plan to conduct 620 visits for 21 000 primary school students in the year 2008. Programme details will be uploaded onto the webpage of the Department and hyper-linked to the webpage of Education Bureau.

(c) Outdoor Education Activity for Kindergarten

Performance Targets (Year 2007)	Actual Performance (Year 2007)
To organise 50 guided visits for 1 600 participants.	Organised 66 guided visits for 2 420 participants.

Performance Analysis in 2007

Children from kindergartens were arranged to join guided tours around Kowloon Park and Hong Kong Park. Basic knowledge of plants was introduced. Children were also taught the manner and courtesy for visiting parks and the concept of environmental conservation.

Performance Targets in 2008

We plan to conduct 50 visits for some 1 600 participants in the year 2008.

(d) Conservation Courses for Boy Scouts and Girl Guides

Performance Targets (Year 2007)	Actual Performance (Year 2007)
To organise 19 courses for 500 participants.	Organised 21 courses for 607 participants.

Performance Analysis in 2007

The programmes provided a wide range of courses in gardening and arboriculture for Boy Scouts and Girl Guides. They aimed at promoting the concept of nature conservation. Participants were involved in group discussions, lectures, guided visits and practical services. They learnt not only about plants and gardening but also problem-solving techniques.

Performance Targets in 2008

We will conduct 20 conservation courses for some 500 Boy Scouts and Girl Guides in the year 2008.

(e) Seminar and Gallery on Environmental Protection

Performance Analysis in 2007

The Hong Kong University of Science & Technology organized a symposium on environmental issues for secondary schools in association with the Hong Kong Science Museum on 2 June 2007. The objectives were to promote students' interest in and understanding of the environmental issues in Hong Kong, as well as to increase their environmental awareness through investigation projects. 150 students and teachers participated in the symposium.

In September 2007, the Hong Kong Science Museum organized a series of five lectures on climate

change with the Hong Kong Meteorological Society and Hong Kong Observatory, and a special lecture on global warming and impacts on polar region. About 1650 audiences participated in the lectures.

In December 2007, The Hong Kong Institution of Engineers and the Hong Kong Science Museum jointly organized the 'Engineering a Green Future' exhibition to promote the concepts of sustainable development and introduce examples of green engineering technology applications to members of the public.

The Hong Kong Jockey Club Charities Trust approved a grant of \$15 million in April 2004 for setting up the Jockey Club Environmental Conservation Gallery in the Hong Kong Science Museum. The Gallery, aiming at communicating the importance of environmental conservation to the community at large and to advocate an environmental friendly lifestyle, will be opened in 2009.

The Hong Kong Space Museum, in collaboration with the Physics Department of the University of Hong Kong has conducted the first territory-wide survey on light pollution. Funded by the Environment and Conservation Fund, the project aimed at arousing public awareness of the detrimental effects of light pollution on dark skies (such as hampering astronomical observations and doing harm to nocturnal wildlife and ecosystems), and the values of quality outdoor lighting for humans.

Performance Targets in 2008

The Science Museum will continue to organize symposium/seminars on environmental issues for schools and to proceed with fabrication of the Jockey Club Environmental Conservation Gallery targeted for completion in 2009.

The Light Pollution Survey commenced in 2007 will continue well into 2008 and findings of the survey will be announced via related websites.

The Space Museum will continue to organize activities to arouse public awareness of the conservation of dark skies across the territory.

3.5 (IV) Greening Activities

Performance Analysis in 2007

Over 2 860 greening activities were organised, which exceeded the performance target of 2 780 for the year of 2007.

(a) Hong Kong Flower Show

The Hong Kong Flower Show 2007 was held from 16 to 25 March at Victoria Park attracting about 520 000 visitors. The Show aimed at promoting public interest in horticulture and arousing an awareness of the conservation of natural environment. Over 185 local and overseas horticultural organisations participated in the Show. A special display of Wollemi Pine was well-received by the visitors. Other major attractions included colourful garden displays and flower arrangements staged by horticultural organisations, plant nurseries and flower clubs; beautiful plant exhibits; and floral art arrangements entered for competition by individuals and schools. A wide range of educational activities, musical performances and entertainment programmes were also provided for the enjoyment of visitors.

(b) Community Planting Day

To promote public awareness in greening, the Department organised 27 Community Planting Days in 2007. A total of 12 150 participants planted 75 620 trees and shrubs in 18 Districts. The performance target of 26 Community Planting Day was met.

(c) Green Volunteer Scheme

Under this Scheme, Green Volunteers were recruited in 18 Districts to undertake simple

horticultural maintenance tasks in parks and gardens, and serve as stewards in greening promotion activities. They were encouraged to participate in greening their own neighbourhood. A total of 360 voluntary greening activities with a total of 4 700 sessions of services were provided by the volunteers in 2007.

(d) Greening School Subsidy Scheme

The Scheme was launched for schools and kindergartens to implement planting projects in their campuses with technical advice from horticultural instructors, and to organise greening activities. It aimed at fostering green consciousness among students. This Scheme was very popular and had attracted the participation of 779 schools and kindergartens in 2007.

(e) "One Person, One Flower" Scheme

The Scheme aimed at enhancing the knowledge of students about plants and cultivate their interests in growing them. In 2007, 350 000 seedlings were distributed for students to nurture at home or in school.

(f) Greening Hong Kong Activities Subsidy Scheme

The Scheme aimed at encouraging more greening activities organised by the local community. Eight organisations were subsidised under this Scheme in 2007 to organise greening activities. The original performance target was to subsidise seven organisations.

(g) Greening Exhibitions and Talk

Greening exhibitions and talks on horticulture were organized at the Green Education and Resource Centre at Kowloon Park in 2007 with a view to educating and arousing public's awareness in greening. A total of 446 exhibitions and talks with over 38 000 participants were organized.

(h) Community Garden Programme

To encourage the public to participate actively in greening activities at the neighbourhood level and adopt greening activities as part of daily life, 41 gardening courses were organised with 7 800 participants.

(i) Outreaching Greening Promotional Activities

To promote greening and enhance public awareness in greening and environmental protection, 148 outreaching greening activities were delivered to organizations and schools for 18 000 participants in 2007.

Performance Targets in 2008

The Department will continue to promote a green culture in the community through a series of educational and community involvement programmes. We target to organise 2 810 greening activities with 1 279 000 participants in 2008. Our plan is as follows –

(a) Hong Kong Flower Show

The Hong Kong Flower Show 2008 will be held from 14 to 24 March 2008 in Victoria Park and about 520 000 visitors are expected.

(b) Community Planting Days

A total of 26 Community Planting Days with 12 000 participants will be organised in 2008.

(c) Green Volunteer Scheme

Members of the public will be recruited as Green Volunteers in 18 Districts to perform simple garden maintenance in LCSD parks and playground, and to serve as stewards in greening activities organised by LCSD. A total of 360 voluntary greening activities with 4 700 sessions of voluntary services will be provided by volunteers in 2008.

(d) Greening School Subsidy Scheme

The Department aims at inviting 770 schools to participate in this Scheme in 2008.

(e) "One Person, One Flower" Scheme

The Department targets to distribute 350 000 seedlings to students in 2008.

(f) Greening Hong Kong Activities Subsidies Scheme

Eight applications for subsidy to hold greening activities are expected from local organisations in 2008.

(g) Greening Exhibitions and talks

Greening exhibitions and Talks on horticulture will be organized at Green Education and Resource Centre in 2008 with a view to educating and arousing public awareness in greening.

(h) Community Garden Programme

40 gardening courses under the programme with 7 000 participants will be organised in 2008.

(i) Outreaching Greening Promotional Activities

To promote greening and enhance public awareness in greening and environmental protection, the Department's target is to organise 151 outreaching greening activities in 2008.

(j) Best Landscape Award

The Award will be launched in 2008. It aims at sustaining the betterment of living environment in private property and promoting excellence in greening of public project by outstanding landscape design and horticultural maintenance.

(B) Preserving Assets of Our Heritage

3.6 The Department, through its Antiquities and Monuments Office (AMO), is committed to preserving Hong Kong's cultural heritage. Under the Antiquities and Monuments Ordinance, the Antiquities Advisory Board (AAB) advises the Secretary for Development, the Authority, on matters relating to antiquities and monuments. The AMO works closely with AAB and acts as the Authority's executive arm under the Ordinance.

3.7 In addition, the AMO plays an important role in monitoring Environmental Impact Assessment (EIA) projects insofar as their impact on antiquities and monuments is concerned. The work involves inspecting cultural heritage sites, examining mitigation measures to remedy any possible damage to the sites and conducting, where necessary, rescue excavations at archaeological sites and cartographic recording of historical buildings.

3.8 The AMO also organizes educational programmes to promote heritage preservation among the public.

Performance Target in 2007

3.9 The targets set for 2007 were -

to declare 1 monument under the Antiquities and Monuments Ordinance;

to restore and maintain 60 historical buildings;

to organize 566 heritage educational programmes; and

to publish 12 publications.

3.10 It is the Department's conviction that cultural heritage is very much part of our physical as well as cultural environment. Not only does it enhance our built environment and the natural landscape, it also provides an essential, finite and irreplaceable link between the past, the present and the future. It forms the basic points of reference for our cultural identity and traditions.

Actual Performance in 2007

3.11 In 2007, the AMO carried out restoration and repair work on a number of historic buildings, including the Tang Ancestral Hall and Yu Kiu Ancestral Hall along the Ping Shan Heritage Trail, Yeung Hau Temple in Ha Tsuen, Man Lun Fung Ancestral Hall and Tai Fu Tai in San Tin, Man Mo Temple in Tai Po and Cheung Shan Kwu Tsz in Ping Che. In preparation for the full restoration of Chik Kwai Study Hall in Pat Heung to be carried out in 2008, a conservation study and a cartographic survey of the study hall were conducted.

3.12 Archaeological investigations at the former Mountain Lodge and Central School were conducted to decipher the foundation conditions of both demolished buildings. Necessitated by a road extension project, rescue excavation was conducted at Cheung Shue Tan, Tai Po. Artefacts dating back to the prehistoric period and environmental samples were recovered to illustrate the cultural and natural changes at the eastern coast of the New Territories. Similar operations were carried out at Sai Kung, Tuen Mun, Cheung Chau and Sha Tau Kok to prevent the underground archaeological remains there from being damaged during the development of village houses at those sites.

3.13 The revitalization of the former Whitfield Barracks at Kowloon Park as the Hong Kong Heritage Discovery Centre won the '2007 UNESCO Heritage Awards Jury Commendation for Innovation'. Some of the facilities of the centre, opened in October 2005, included the exhibition gallery, reference library and lecture hall. Converted from the Old Ping Shan Police Station, a Grade III historic building, the Ping Shan Tang Clan Gallery cum Heritage Trail Visitors Centre has been opened since April 2007.

3.14 Two international conferences, namely the 'Evolution and Rehabilitation of the Asian Shophouse' jointly organised with the United Nations Educational, Scientific and Cultural Organization (UNESCO), UNESCO ICCROM-Asian Academy for Heritage Management and Lord Wilson Heritage Trust; and the 'Heritage Conservation and Prehistoric Archaeology of South China' jointly organized with the Chinese University of Hong Kong were held in the year.

3.15 Two electronic database systems are being developed to store heritage information. The Heritage Virtual Tour Programme launched in July 2007 will provide a panoramic view of 60 historic buildings and sites across Hong Kong. The Hong Kong Traditional Chinese Architectural Information System, which will maintain a database of about 200 traditional Chinese villages and buildings in Hong Kong, will be launched in 2008.

3.16 The AMO carried out 63 restoration/maintenance projects for historic buildings. We declared the Chik Kwai Study Hall in Pat Heung, Yuen Long and the Tang Ancestral Hall in Ha Tsuen, Yuen Long as monuments under the Antiquities and Monuments Ordinance. We also conducted 695 heritage educational programmes and produced 14 publications.

Performance Targets in 2008

3.17 The performance targets in preserving assets of heritage for 2008 are -

(a)	No. of buildings/structures declared as monuments	1
(b)	No. of historical buildings restored/maintained	60
(c)	No. of educational programmes	700
(d)	No. of publications	13

3.18 To achieve these targets, the Department, under the guidance of AAB, will continue to work closely with the bureaux and departments concerned, including the Development Bureau; Education Bureau; Home Affairs Department; Architectural Services Department; Environmental Protection Department; and Planning Department; as well as Hong Kong Tourism Board, private developers and land owners.

(C) Providing Aesthetically Pleasing Open Space

3.19 We achieve our objective through :

(I) Land use zoning and acquisition of land for open space development-

We take an active role in negotiating with the Planning Department and Lands Department to acquire more quality and genuine open spaces at good locations with easy accessibility for recreational development.

Special care has been and will continue to be taken to avoid taking over land which has either low potential for open space development or has excessive site constraints such as steep slopes, drainage reserves, road reserves and polluted sites for recreational use.

As part of the Government's greening efforts, we have been working with Civil Engineering Development Department to provide simple landscaping to vacant government land in prominent/strategic position with no imminent/known development programme in the near future.

(II) Design of Aesthetically Pleasing Open Space

We ensure that soft landscape areas are maximised in passive recreation areas. In general, 85% of the site will be used as landscape area.

Conspicuous flowering and shade trees, colour foliage and flowering shrubs of hardy species will be chosen to create colour contrast and seasonal changes.

Through careful design, selection of heavy standard trees and increase of planting density, instant greening for new projects will be achieved.

When planning new open space projects, the facility will be designed and constructed with consideration to its environmental performance such as application of energy saving building services installation and use of environmental friendly materials (e.g. recycled plastic seating benches, refuse bins, etc). Wooden materials from regenerated forests will be used.

Actual Performance in 2007

3.20 In 2007, 11 open space projects (including capital works projects, minor works projects and sponsored projects) were completed, resulting in an increase of about 6.27 hectares of open space in Hong Kong.

Performance Target in 2008

3.21 In 2008, 27 open space projects are anticipated to be completed, which will provide an additional 26.37 hectares of open space. A list of these projects is shown at Annex II. Apart from new

open space projects, there are on-going improvement and upgrading works to existing parks and playgrounds.

(D) Practising Waste Reduction and Energy Savings

3.22 We proactively explore ways to promote waste reduction and energy savings, including conducting energy audits to identify good energy management practices.

3.23 Measures/housekeeping practices adopted in pursuing waste reduction and in saving energy and natural resources are shown below.

(I) On paper saving

3.24 Good practices for economy in the use of paper are set out in Administrative Circular No. 8/2000 and Circular Memorandum 2/2005, which are re-circulated to staff periodically as a reminder. We promoted 'reduce and reuse' for saving paper. We met the target for shifting 50% of the total paper consumption from wood free paper to recycled paper. We also made the following endeavors in 2007 -

- (a) Application of PCs, Intranet and e-mail were widely used in the department for internal and external communications, and conveyance of digital photographs and design works. This had not only contributed to office efficiency, but had helped save paper.
- (b) Our Information and Public Relations Section had provided an electronic newspaper clipping services to the Department's Lotus Notes users to ensure that the number of hard copies is kept at a minimum through share reading.
- (c) We produced e-versions of the departmental yearbook and departmental Christmas cards; hard copies were suspended.
- (d) We recycled paper and unserviceable library materials. In the year 2007, 614 409 kg of unserviceable library materials were recycled. Moreover, the email notification service provided readers with the option to receive overdue and reservation notices through e-mail and had thus economised on the use of paper. As at 31.12.2007, about 159 000 registered borrowers had opted for the service.
- (e) Museums and Film Archive also reduced waste by recycling exhibition materials and placed collection boxes for collecting used guided maps/pamphlets disposed by patrons after their visits for recycling purpose.
- (f) Performing arts venues and programming offices used electronic means to publicize performing arts programmes or to collect feedback. Printing of flyers and house programme had been reduced by monitoring tightly distribution and recycling unused copies.
- (g) In line with the Government's initiative of paper saving, suppliers were encouraged to adopt environment friendly measures in preparation of tender/quotation documents (such as using recycled paper) and minimize the use of packaging materials.

(II) On energy saving

3.25 We managed our resources responsibly with a view to preserving natural resources. We were mindful of our environmental objectives when planning new facilities and maintaining existing facilities. Energy-saving building services installations and environmentally friendly materials were considered. With these efforts, we had been able to reduce electricity consumption and despite commissioning of new facilities (the number of major facilities/venues of the department has increased by 4 from 1,898 in 2006 to 1,902 in 2007), reopening of some facilities after their closure for renovation works, installation of additional equipment, the total electricity consumption of the department increased by 1.03% only in 2007/08 when compared with 2006/07. The electricity consumption of the department in 2007 was 372,301,937 kWh. The corresponding indirect emission was 711,097 kg of sulphur dioxide (SO₂), 431,870 kg of nitrogen oxides (NO_x) and 22,338 kg of respirable suspended particulates (RSP)¹. The energy efficiency measures we implemented in 2007 were -

- (a) High-efficiency lighting systems (fluorescent tubes with electronic ballasts, motion sensors and optical fibres) were used to achieve energy savings as far as possible. The operating hours of venue lightings were rationalized where appropriate to reduce electricity consumption.
- (b) Generally, we maintained the 25.5°C office room temperature target set by the Government for the summer months. In cases where, for essential operational reasons and customer service purposes, it is necessary to deviate from this temperature standard in certain areas of specific venues such as museums, sports centres and performing arts venues, we worked closely with the Electrical and Mechanical Services Department (EMSD) to monitor the situation and adjust the room temperature to as close to 25.5°C as possible and appropriate.

1. The indirect emission from electricity consumption is calculated according to the formulae set out in the Guide to Clean Air Charter Report Writing published by EPD in Jan 2008.

- (c) We appealed for staff's support in adopting a more relaxed code of business attire and dress down in the summer for energy conservation and improving air quality in Hong Kong.
- (d) Administration Circular on "Electricity Economy" and Office Green Tips were re-circulated to staff to promote energy conservation.
- (e) For Hong Kong Stadium, half of the lightings at the backstage area were modified and arranged to be turned off during non-event days since April 2005 and half of the lightings in the office were dismantled in December 2006. All general lightings inside the two hospitality suites and along the west executive suite corridor were replaced by T5 fluorescent lightings since 2007 for energy saving purposes. Good practice of turning off non-essential general lightings and air-conditioning system during non-event days were adopted to sustain energy saving efforts.
- (f) The following measures were adopted in leisure venues –
 - (i) switching off the lights for the facilities without booking;
 - (ii) shortening pre-cooling hours as deemed appropriate;
 - (iii) regulating the air-conditioning supply in office area by phases and vacant facilities as deemed appropriate;
 - (iv) separating the lighting control at the arena by sections and lobbies to have a better control on the illumination level;
 - (v) separating the air-conditioning switches at different sports areas by individual switch control so that the air-conditioning system would only be switched on when necessary to save energy;
 - (vi) regulating the air-conditioning temperature of lobbies and working area at 25.5°C to save energy; and
 - (vii) adjusting the timer lighting schedule to fit seasonal need.

- (g) The following measures were adopted in performing arts venues –
- (i) turning off the air conditioning system in the Main Foyer half an hour/one hour before the close of the venue when there was no performance/activity in the venues;
 - (ii) shortening pre-cool time of the air conditioning system required on stage while maintaining fairly reasonable level of services; and
 - (iii) maximising the use of natural light and turning off the lights in the venue where illumination level was acceptable.
- (h) All museums continued to exercise the following tight measures on energy saving -
- (i) disconnecting/switching off some of the lights in illuminated area at the public corridors and office area;
 - (ii) switching off escalators during museum closing days when maintenance works were carried out;
 - (iii) switching on and off the lights in the public area by phases;
 - (iv) turning on and off the air-conditioning supply in office area by phases to reduce energy consumption;
 - (v) adjusting temperature settings in working area to save energy on air-conditioning;
 - (vi) shortening pre-cooling hours for galleries as deemed appropriate;
 - (vii) installing speed control sensor for outdoor escalator; and
 - (viii) using energy saving lamps in lifts, office and common areas.
- (i) Solar panels were installed at the Science Museum to promote the energy saving concept.
- (j) Permanent lights out measures were implemented for external lightings in 41 venues in which an annual saving of \$0.12m would be achieved.
- (k) The following energy-saving initiatives were carried out at the HQ building -
- (i) removing about 80 no. of fluorescent lamps in the office area to lower the illumination level;
 - (ii) installing occupancy sensors on some floors to control the on/off of the lightings;
 - (iii) suspending the operation of a number of lifts during non-peak hours;
 - (iv) replacing about 500 no. of T8 fluorescent lamps by T5 type at common area, service rooms and car park;
 - (v) installing passenger sensors for the two escalators;
 - (vi) replacing 116 no. of T8 fluorescent 'Exit' signs by LED type;
 - (vii) adhering solar control window film at some office area;
 - (viii) installing timer to control the flushing water of urinals at male toilets;
 - (ix) switching off part of G/F entrance lighting;
 - (x) ceasing the operation of lighting at open space car park; and
 - (xi) carrying out surprise checks after office hours to ensure that any unnecessary equipment were turned off while not in use.

- (l) We promoted energy efficiency measures among colleagues by visiting EMSD Headquarter Buildings, featuring various energy efficiency measures and participating in EMSD's workshops on energy saving.

(III) Other Green Measures

3.26 Other green measures adopted were listed below:

- (a) We exercised vigilance in the use of water by regulating outflow of water taps and replacing them with timer-taps at our offices and venues as far as possible.
- (b) We achieved water saving by planting drought tolerant species at suitable locations and using less water for water features in major parks.
- (c) Works were carried out at beaches to connect public sewer for disposal of sewage or shower water up to the requirement of Environmental Protection Department. It is estimated that the connection work for all beaches in Tsuen Wan will be completed in 2009.
- (d) We issued good practices in energy saving for operational staff and contractors ([Annex III](#)). They were constantly reminded to follow the good practices to achieve waste reduction and energy savings.
- (e) We promulgated on our Document Library a list of sales term contracts for waste disposal/recycling to facilitate sale/recycling of unserviceable items.
- (f) We promoted the use of more green products such as compost and environmental-friendly pesticide for plants.
- (g) We placed waste separation bins at about 390 venues including parks, playgrounds, sports grounds, beaches, swimming pools, sports centres, water sports centres, outdoor recreation centres, camps, other cultural venues and the headquarters building.
- (h) We encouraged colleagues to avoid the use of products containing volatile organic compounds, especially on high pollution days.

(IV) Clean Air Charter

3.27 On 27 November 2006, the Chief Executive signed the Clean Air Charter on behalf of the Government at the "Business for Clean Air" seminar organized by the Hong Kong General Chamber of Commerce. The Charter was initiated by the business sector in support of the Government's appeal to improve air quality in Hong Kong.

3.28 We have a fleet of 154 vehicles. The total mileage was 2,127,293 km in 2007 and the fuel consumption was 432,017 litres. The related emission was about 11,071 kg of NO_x and 898 kg of RSP². In support of the campaign to improve air quality in Hong Kong, we implemented the following measures -

2.The indirect emission from electricity consumption is calculated according to the formulae set out in the Guide to Clean Air Charter Report Writing published by EPD in Jan 2008.

- (a) all departmental light buses would gradually be replaced as they retire by LPG vehicles that have lower emission. In addition, two retired saloons were replaced by environmental-friendly "Hybrid Synergy" cars which significantly reduce emissions and fuel consumptions;
- (b) We have planned to replace all Euro I & II emission standard diesel specialized vehicles of our fleet with Euro V in 2008/2009; and
- (c) We have instructed all departmental drivers to switch off the engine while waiting to reduce emission.

(E) Minimising Air and Noise Pollution in Organizing Leisure and Cultural Activities

3.29 We monitored closely the generator and machinery installed for activities to ensure that dark smoke emission would not breach the prescribed requirement in the relevant Regulations.

3.30 We monitored the noise level of outdoor events and ensure they were within the limits set in the relevant Regulations.

3.31 We advised the hirers of the Hong Kong Stadium to closely observe the statutory noise level limits under the Noise Control Ordinance for organizing outdoor activities at the Stadium and to take effective mitigation measures to minimize noise disturbance to the nearby residents.

3.32 Further, the department implemented smoking ban at all statutory no smoking areas.



Environmental Report 2007

Environmental Report 2007

Chapter 1

Introduction and Controlling
Officer's Profile of
Key Responsibilities

Chapter 2

Environmental
Goal and Policy

Chapter 3

Environmental Management,
Performance Analysis and
Targets / Milestones

Chapter 4

Towards a Quality Future

Annex

Back to LCSD

Chapter 4 Towards a Quality Future

- 4.1 We will continue to work towards our environmental goal by:
- planting more trees and increasing the planting of shrubs and seasonal flowers with a view to enhancing the visual impact with more seasonal colours;
 - focusing our efforts of greening promotion on two aspects : family participation and local participation;
 - preserving more assets of our heritage;
 - providing more aesthetically pleasing open space for the enjoyment of the community; and
 - maintaining our efforts in practising waste reduction and saving energy and natural resources for promotion of a greener working environment.
- 4.2 We believe that with the targets and goals we set for ourselves, we will continue to contribute towards a more sustainable development in environmental protection in Hong Kong.

Comments and Suggestions

4.3 This report can be viewed at our homepage at www.lcsd.gov.hk. We welcome any comments and enquiries on this report. Please write to our Departmental Green Manager through any of the following channels –

Mail : 13/F, LCSD Headquarters Building, 1, Pai Tau Street, Shatin, N.T.
Fax : 2603 0642
E-mail : enquiries@lcsd.gov.hk



Environmental Report 2007

Environmental Report 2007

Chapter 1

Introduction and Controlling
Officer's Profile of
Key Responsibilities

Chapter 2

Environmental
Goal and Policy

Chapter 3

Environmental Management,
Performance Analysis and
Targets / Milestones

Chapter 4

Towards a Quality Future

Annex

[Back to LCSD](#)

Annex

[Annex I](#) | [Annex II](#) | [Annex III](#)

Annex I

Summary of Massive Planting Programme 2007

District	Tree	Shrubs	Annuals	Total
C&W	97	44 928	62 558	107 583
Wch	61	42 624	29 800	72 485
E	768	148 626	70 437	219 831
S	153	99 418	43 720	143 291
SSP	517	105 544	11 150	117 211
YTM	91	100 280	43 066	143 437
KC	95	161 719	15 360	177 174
WTS	654	173 499	23 213	197 366
KT	430	184 508	12 856	197 794
Is	196	130 700	15 520	146 416
TM	836	150 565	27 457	178 858
YL	916	154 472	16 800	172 188
KwT	210	114 539	2 700	117 449
TW	62	73 878	22 929	96 869
N	275	404 351	60 991	465 617
TP	907	124 818	10 807	136 532
ST	3 403	412 101	55 418	470 922
SK	1 108	221 218	42 788	265 114
	10 779	2 847 788	567 570	3 426 137



Environmental Report 2007

Environmental Report 2007

Chapter 1

Introduction and Controlling
Officer's Profile of
Key Responsibilities

Chapter 2

Environmental
Goal and Policy

Chapter 3

Environmental Management,
Performance Analysis and
Targets / Milestones

Chapter 4

Towards a Quality Future

Annex

[Back to LCSD](#)

Annex

[Annex I](#) | [Annex II](#) | [Annex III](#)

Annex II

I. Open Space Projects Completed in 2007

Item No.	District	Project Title	Additional Open Space Area (ha)
1	C&W	Central Reclamation Phases III - Promenade between Pier 8 and 9	0.06
2	E	Siu Sai Wan Garden	0.61
3	Is	Development of Local Open Space in Tai Tsoi Yuen, Cheung Chau	0.18
4	KwT	DOS at Tsing Yi North Low Level Fresh Water & Salt Water Services Reservoirs, Tsing Yi	0.28
5	KwT	Local Open Space, Kwai Chung Estate Phase 3	0.68
6	SK	Local Open Space in Area 44, Tseung Kwan O	0.58
7	TM	Public Open Space, Fuk Hang Tsuen Road, Lam Tei, Tuen Mun	0.71
8	YTM	Cherry Street Park, Tai Kok Tsui (Site A)	0.55
9	YTM	Development of Allotment Garden at part of DOS at Ferry Street and Jordan Road, Kowloon	0.21
10	YL	Local Open Space in Areas 25, 25A and 25B, Tin Shui Wai	1.98
11	YL	Basketball Courts in Area 107 Tin Shui Wai	0.43
Total			6.27

II. Open Space Projects to be Completed in 2008

<u>Item No.</u>	<u>District</u>	<u>Project Title</u>	<u>Additional Open Space Area (ha)</u>
1	Is	District Open Space in Area 2, Tung Chung	0.77
2	Is	Open Space Development at Area 40, Tung Chung, Lantau	0.70
3	Is	Open Space Development at Area 27, Tung Chung, Lantau	0.28
4	KwT	District Open Space adjoining Kwai Chung Estate	0.93
5	KT	District Open Space adjoining Sau Mau Ping public housing development	2.00
6	N	District Open Space in Area 39, Fanling/Sheung Shui	1.26
7	N	Local Open Space in Area 28, Fanling/Sheung Shui	1.30
8	N	Local Open Space in Area 29, Fanling/Sheung Shui	0.11
9	N	Local Open Space in Area 29A, Fanling/Sheung Shui	0.27
10	SSP	Sham Shui Po Park - Stage 2	1.90
11	SK	District Open Space in Area 40A, Tseung Kwan O	2.39
12	ST	Local Open Space in Area 11, Shatin	0.45
13	ST	Pak Shek Kok Waterfront Promenade	2.10
14	TP	Pak Shek Kok Waterfront Promenade	2.20
15	TW	Local Open Space in Area 50, Sham Tseng, Tsuen Wan	0.60
16	TW	District open space in Area 35, Tsuen Wan - phase 2	2.50
17	TM	Local Open Space in Area 16 (Yau Oi South), Tuen Mun	1.90
18	TM	Local Open Space in Area 52, Tuen Mun	0.26
19	WTS	Phase 1 of Ex-Wong Tai Sin Bazaar	0.16
20	YTM	Open Space at Tai Kok Tsui Temporary Market	0.40
21	YTM	Development of Open Space at J/O Fuk Tsun Street/ Larch Street/Tai Kok Tsui Road	0.13
22	YTM	Yau Tsim Mong Pet Garden	0.23
23	YTM	Sycamore Street Rest Garden	0.06
24	YTM	Tai Kok Tsui Road/Larch Street Sitting-out Area	0.01
25	YTM	Canton Road/ Soy Street Sitting-out Area	0.03
26	YL	District Open Space in Area 107 Tin Shui Wai	2.70
27	YL	District Square in Areas 33A and 29, Tin Shui Wai	0.73
		Total	26.37



Environmental Report 2007

Environmental Report 2007

Chapter 1

Introduction and Controlling
Officer's Profile of
Key Responsibilities

Chapter 2

Environmental
Goal and Policy

Chapter 3

Environmental Management,
Performance Analysis and
Targets / Milestones

Chapter 4

Towards a Quality Future

Annex

Back to LCSD

Annex

[Annex I](#) | [Annex II](#) | [Annex III](#)

Annex III

Proposed Good Practices to Operational Staff and Contractors

1. Choose energy efficient electrical appliances.
2. Do without unnecessary electrical appliances, e.g. electric pencil sharpener.
3. Use power-saving light bulbs.
4. Reduce lighting to minimum level required for illumination.
5. Switch off the air-conditioner and lights on leaving the room.
6. Use lead-free petrol.
7. Switch off vehicles or machines when not in use.
8. Save paper, print or photocopy only when necessary.
9. Write on both sides of every piece of paper before throwing it away.
10. Reuse envelopes.
11. Send waste paper for recycling.
12. Use your own cup. Avoid throw-away paper cup and other utensils.
13. Separate garbage in paper, can and bottle and send them to collection centers for recycling.
14. Reuse polythene bags if possible.
15. Put used batteries in litterbins. Do not leave them outdoor or throw them into water.
16. No smoking in public places.
17. Save water. Turn off water taps when not in use. Repair leaked water taps as soon as possible.
18. Minimize copies of circulars (e.g. by circulating a copy to staff).
19. Reuse loose minute jackets.
20. Avoid use of fax leader pages.
21. Minimize copies of flimsies and reference copies at meetings.
22. Photocopy on both sides of every piece of paper as far as possible.

23. Photocopy on the unused side of waste paper for internal use documents.