



Environmental Report 2008





Environmental Report 2008

Chapter 1

Introduction and Controlling
Officer's Profile of
Key Responsibilities

Chapter 2

Environmental
Goal and Policy

Chapter 3

Environmental Management,
Performance Analysis and
Targets / Milestones

Chapter 4

Towards a Quality Future

Annex

Back to LCSD

Chapter 1

Introduction and Controlling Officer's Profile of Key Responsibilities

1.1 The Leisure and Cultural Services Department (LCSD), set up under the Home Affairs Bureau (HAB), is responsible for the territory-wide provision of recreational, sports and cultural facilities and services.

Vision, Mission and Values

1.2 Our **vision** is to -

- provide quality leisure and cultural services that are commensurate with Hong Kong's development as a world-class city and events capital.

1.3 Our **mission** is to -

- enrich life by providing quality leisure and cultural services for all;
- promote professionalism and excellence in leisure pursuits and cultural services;
- promote synergy with sports, cultural and community organisations to enhance the development of arts and sports in Hong Kong;
- preserve cultural heritage;
- beautify the environment through tree planting;
- achieve a high level of customer satisfaction; and
- build a highly motivated, committed and service-oriented workforce.

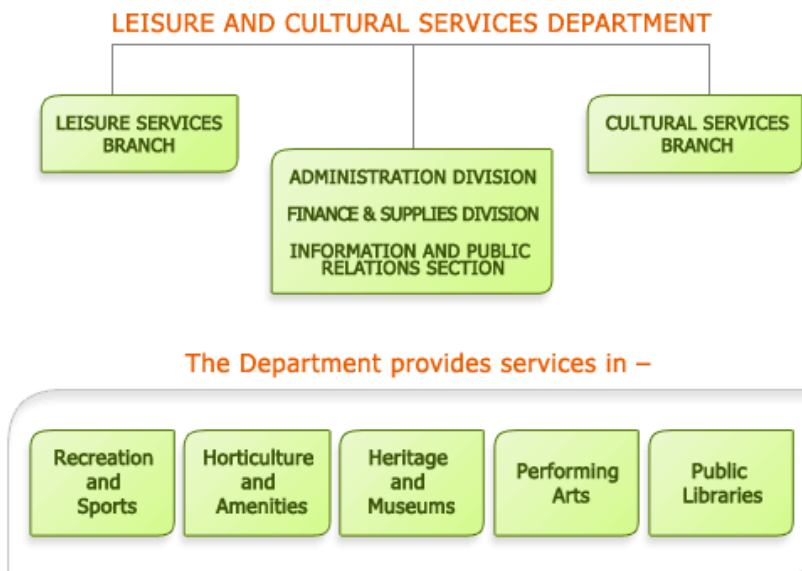
1.4 We achieve our mission by embracing the following core values -

- Customer focus
We continue to respond to customer needs and pledge to provide services in a courteous and user-friendly manner.
- Quality
We pledge to deliver high-quality services in a cost-effective manner.
- Creativity
We continue to encourage diversity and to value original ideas.
- Professionalism
We uphold the highest standards of professionalism and ethics while maintaining a high level of performance.
- Result oriented
Our focus at all times is to achieve the best results possible.
- Cost-effectiveness
We are committed to reaching our goals in an efficient and cost-effective manner.

- Continuous improvement
We seek to continually improve our services and to respond proactively in meeting the changing needs of the community.

Overall View of Our Operation

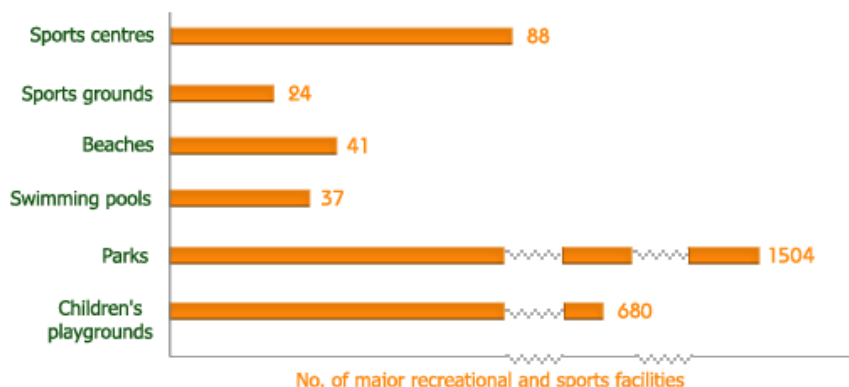
1.5 **Organisation Chart of the Leisure and Cultural Services Department**



1.6 The Department organises and promotes a wide range of leisure and cultural activities for people of all ages with a view to enhancing arts appreciation and enriching the quality of life of the community. The major responsibilities of the Department are set out in the paragraphs below.

Recreation and Sports

1.7 We develop and manage recreational and sports facilities and organise a wide range of leisure activities in order to promote recreation and sports at all levels throughout the community. As at 31.12.2008, the number of major recreational and sports facilities under our management was -



Horticulture and Amenities

1.8 We promote appreciation and conservation of nature and greening of Hong Kong through planting of trees, shrubs and other plants in public parks and amenity areas, and through organising a wide range of community greening activities. In 2008, we maintained a total of about 1 618 hectares of amenities area and planted about 3.43 million trees, shrubs and annuals.

Heritage and Museums

1.9 We preserve heritage and provide museum services with a view to promoting appreciation of heritage, arts, science and culture. In 2008, we managed 14 museums, two heritage centres and a film archive. We organised a total of about 140 exhibitions and 26 350 in-house and outreach programmes covering the themes of history, art, heritage and science.

Performing Arts

1.10 We promote performing and cinematic arts through the provision of cultural facilities and presentation of programmes. In 2008, we managed 15 performing arts venues and organised a total of about 4,230 cultural presentations which include music, dance, Cantonese and western opera, drama, theatre and multimedia performing arts programmes.

Public Libraries

1.11 We provide, manage and develop library services to meet community needs for knowledge, life-long learning, information, research and recreation; offer library extension activities to all ages; and promote reading and literary arts. We managed 76 public libraries and the stock of books as at 31.12.2008 was 10.7 million and that for multimedia materials was 1.6 million.



Environmental Report 2008

Chapter 1

Introduction and Controlling
Officer's Profile of
Key Responsibilities

Chapter 2

Environmental
Goal and Policy

Chapter 3

Environmental Management,
Performance Analysis and
Targets / Milestones

Chapter 4

Towards a Quality Future

Annex

[Back to LCSD](#)

Chapter 2**Environmental Goal and Policy****Environmental Goal**

2.1 Our environmental goal is to improve our living environment and to enrich the quality of life of our community by providing a wide range of leisure and cultural facilities and activities throughout the territory. We take into account environmental considerations from project inception to management/operation to minimise pollution, conserve resources, protect the natural environment and promote the appreciation of the beauty of our environment.

Environmental Policy

2.2 In meeting our goal, we are committed to -

- (A) promoting greening and horticulture;
- (B) preserving assets of our heritage;
- (C) providing aesthetically pleasing open space;
- (D) practising waste reduction and energy saving; and
- (E) minimizing air and noise pollution in organising leisure and cultural activities.



Environmental Report 2008

Chapter 1

Introduction and Controlling
Officer's Profile of
Key Responsibilities

Chapter 2

Environmental
Goal and Policy

Chapter 3

Environmental Management,
Performance Analysis and
Targets / Milestones

Chapter 4

Towards a Quality Future

Annex

Back to LCSD

Chapter 3

Environmental Management, Performance Analysis and Targets / Milestones

(A) Promoting greening and horticulture

3.1 In promoting greening and horticulture, we have four areas of work. They are -

- upgrading of existing landscape areas;
- massive planting programme;
- education & promotion on environmental protection; and
- greening activities.

3.2 **(I) Up-grading of Existing Landscape Areas**

Performance Targets (Year 2008)	Actual Performance (Year 2008)
<ul style="list-style-type: none"> • Up-grading of 43 hectares of existing landscape areas. 	<ul style="list-style-type: none"> • A total of 36.5 hectares of existing landscape area were upgraded.

Performance Analysis in 2008

The Department's actual performance generally followed the target of 2008 through the combined effort of district staff and regional landscape teams, and placing more resources and effort on improving the environment.

Performance Targets in 2009

The Department's targets in 2009 are -

- to upgrade 43 hectares of landscape areas;
- to identify 43 prominent roadside amenity areas and 5 vacant government sites with the total area of about 1.6 hectares for landscape improvement; and
- to beautify 12 pedestrian footbridges in various districts with portable planters.

3.3 **(II) Massive Planting Programme**

Performance Targets (Year 2008)	Actual Performance (Year 2008)
<ul style="list-style-type: none"> • To plant 10 000 trees, 3 340 000 shrubs and annuals. 	<ul style="list-style-type: none"> • Target met (breakdown at Annex I).

Performance Analysis in 2008

The problem of sourcing large flowering trees was overcome by service contracts that covered the supply of plants and provision of manpower for planting large trees.

Performance Targets in 2009

The Department's targets in 2009 are -

- to plant trees, shrubs and annuals up to 3.43 million; and
- to emphasize planting of flowering trees with a view to enhancing the visual impact with more seasonal colours.

3.4 (III) Education & Promotion on Environmental Protection

(a) Horticulture Courses for the General Public

Performance Targets (Year 2008)	Actual Performance (Year 2008)
<ul style="list-style-type: none"> • To organise 35 horticulture courses for 1 050 participants. 	<ul style="list-style-type: none"> • Organised 44 courses for 1 241 participants.

Performance Analysis in 2008

The courses were well-received by the participants. More horticulture courses were organised in 2008.

Performance Targets in 2009

We plan to conduct 42 horticulture courses for 1200 participants from the general public for the year 2009. Details of the courses are publicized in the "Community Recreation and Sports Programme" booklet and the Department's webpage.

(b) School Guided Visits

Performance Targets (Year 2008)	Actual Performance (Year 2008)
<ul style="list-style-type: none"> • To organise 620 guided visits for a target of 21 000 participants. 	<ul style="list-style-type: none"> • Organised 600 guided visits for 19 097 participants.

Performance Analysis in 2008

School children were guided around the Hong Kong Zoological & Botanical Gardens, Kowloon Park, Hong Kong Park, Tai Po Waterfront Park, Lower Shouson Hill Nursery and Tung Tze Nursery. The content of the talk delivered during the guided visit was designed having regard to the syllabus of the environmental education for primary schools, including the profile of plants and animals.

Performance Targets in 2009

We plan to conduct 600 visits for 20 000 primary school students in the year 2009. Programme details have been uploaded onto the webpage of the Department.

(c) Outdoor Education Activities for Kindergartens

Performance Targets (Year 2008)	Actual Performance (Year 2008)
<ul style="list-style-type: none"> • To organise 50 guided visits for 1 600 participants. 	<ul style="list-style-type: none"> • Organised 70 guided visits for 2 238 participants.

Performance Analysis in 2008

Arrangement were made for children from kindergartens to join the guided tours around the Kowloon Park and Hong Kong Park. Basic knowledge of plants was introduced. Children were also taught the manner and courtesy for visiting parks and the concept of environmental conservation.

Performance Targets in 2009

We plan to conduct 65 visits for some 1 900 participants in the year 2009.

(d) Conservation Courses for Boy Scouts and Girl Guides

Performance Targets	Actual Performance
---------------------	--------------------

(Year 2008)

- To organise 20 courses for 500 participants.

(Year 2008)

- Organised 18 courses for 550 participants.

Performance Analysis in 2008

The programmes provided a wide range of courses in gardening and arboriculture for Boy Scouts and Girl Guides. They aimed at promoting the concept of nature conservation. Participants were involved in group discussions, lectures, guided visits and practical services.

Performance Targets in 2009

We will conduct 20 conservation courses for some 500 Boy Scouts and Girl Guides in the year 2009.

(e) Seminar and Gallery on Environmental Protection***Performance Analysis in 2008***

From January to March 2008, The Hong Kong Institution of Engineers and Hong Kong Science Museum have jointly organised 7 public lectures and 6 field visits to promote green engineering and introduce concepts of sustainable development to the public. The lectures included topics such as sewage treatment, wind power, waste management, water resource and energy saving measures and received 1592 participants. A total of 117 participants took part in the field visits to the engineering facilities and treatment works.

The Hong Kong University of Science & Technology organised the 2008 “Environment and I” school symposium in association with the Hong Kong Science Museum on 31 May 2008. The objectives were to arouse secondary school students’ interest in understanding the environmental issues in Hong Kong, as well as to increase their environmental awareness through investigation projects. 145 students and teachers from 14 schools participated in the symposium.

In September 2008, the Hong Kong Science Museum jointly organised “Our Sky in 2050 – Climate Change and Our Future” with the Hong Kong Meteorological Society and Hong Kong Observatory. Some 1300 participants attended the two series of lectures on air quality, climate change and polar sciences held in the same year.

From 11 July 2008 to 12 November 2008, the Hong Kong Science Museum jointly presented *The Deep* exhibition with the Consulate General of France in Hong Kong and Macau in collaboration with the Paris Natural History Museum. The exhibition, sponsored by The Hong Kong Jockey Club Charities Trust, focused on the mysterious world of deep-sea fauna and promoted awareness on the importance of conserving the oceans. It attracted more than 330,000 visitors.

The Hong Kong Jockey Club Charities Trust approved a grant of \$15 million in April 2004 for setting up the Jockey Club Environmental Conservation Gallery in the Hong Kong Science Museum. The Gallery, aiming at communicating the importance of environmental conservation to the community at large and advocating an environmental friendly lifestyle, will be opened in March 2010.

The Hong Kong Space Museum, in collaboration with the Physics Department of the University of Hong Kong, conducted the first territory-wide survey on light pollution in 2008. Funded by the Environment and Conservation Fund, the project aimed at arousing public awareness of the detrimental effects of light pollution on dark skies (such as hampering astronomical observations and doing harm to nocturnal wildlife and ecosystems), and the values of quality outdoor lighting for humans. More than 1,300 data sets at 160 different observing sites, ranging from urban to rural country parks, were collected by the end of 2008 for study purpose.

Performance Targets in 2009

The Science Museum will continue to organise symposium/seminars/exhibitions on environmental issues for schools and the public and to proceed with fabrication of the Jockey Club Environmental Conservation Gallery targeted for completion in 2009.

The Light Pollution Survey commenced in 2007 will continue well into 2009 and findings of the survey will be announced via related websites.

As 2009 is the International Year of Astronomy (IYA), the Space Museum will, in collaboration with the IYA2009 Hong Kong League, organise activities to arouse public

awareness on dark skies conservation.

3.5 (IV) Greening Activities

Performance Analysis in 2008

Over 2 920 greening activities were organised, which exceeded the performance target of 2 818 for the year of 2008.

- (a) Hong Kong Flower Show** The Hong Kong Flower Show 2008 was held from 14 to 24 March at Victoria Park attracting about 548 000 visitors. The Show aimed at promoting public interest in horticulture and arousing an awareness of the conservation of natural environment. Over 189 local and overseas horticultural organisations participated in the Show. A special display of *Welwitschia mirabilis* was well-received by the visitors. Other major attractions included colourful garden displays and flower arrangements staged by horticultural organisations, plant nurseries and flower clubs; beautiful plant exhibits; and floral art arrangements entered for competition by individuals and schools. A wide range of educational activities, musical performances and entertainment programmes were also provided for the enjoyment of visitors.
- (b) Community Planting Day** To promote public awareness in greening, the Department organised 29 Community Planting Days in 2008. A total of 12 460 participants planted 36 480 trees and shrubs in 18 Districts. The performance target of 26 Community Planting Day was met.
- (c) Green Volunteer Scheme** Under this Scheme, Green Volunteers were recruited in 18 Districts to undertake simple horticultural maintenance tasks in parks and gardens, and serve as stewards in greening promotion activities. They were encouraged to participate in greening their own neighbourhood. A total of over 380 voluntary greening activities with a total of 5 350 sessions of services were provided by the volunteers in 2008.
- (d) Greening School Subsidy Scheme** The Scheme was launched for schools and kindergartens to implement planting projects in their campuses with technical advice from horticultural instructors, and to organise greening activities. It aimed at fostering green consciousness among students. This Scheme was very popular and had attracted the participation of 795 schools and kindergartens in 2008.
- (e) "One Person, One Flower" Scheme** The Scheme aimed at enhancing the knowledge of students about plants and cultivate their interests in growing them. In 2008, 350 000 seedlings were distributed for students to nurture at home or in school.
- (f) Greening Hong Kong Activities Subsidy Scheme** The Scheme aimed at encouraging more greening activities organised by the local community. Nine organisations were subsidised under this Scheme in 2008 to organise greening activities. The original performance target was to subsidise eight organisations.
- (g) Greening Exhibitions and Talks** Greening exhibitions and talks on horticulture were organised at the Green Education and Resource Centre at Kowloon Park in 2008 with a view to educating and arousing public's awareness in greening. A total of 440 exhibitions and talks with over 38 000 participants were organised.
- (h) Community Garden Programme** To encourage the public to participate actively in greening activities at the neighbourhood level and adopt greening activities as part of daily life, 44 gardening courses were organised with 9 080 participants.

- (i) **Outreaching Greening Promotional Activities** To promote greening and enhance public awareness in greening and environmental protection, over 130 outreaching greening activities were delivered to organizations and schools for 36 950 participants in 2008.
- (j) **Best Landscape Award 2008** The Award was launched in 2008. It aimed at sustaining the betterment of living environment in private property and promoting excellence in greening of public project by outstanding landscape design and horticultural maintenance. Over 310 entries were received.

Performance Targets in 2009

The Department will continue to promote a green culture in the community through a series of educational and community involvement programmes. We target to organise 2 818 greening activities with 1 279 000 participants in 2009. Our plan is as follows –

- (a) **Hong Kong Flower Show** The Hong Kong Flower Show 2009 will be held from 13 to 22 March 2009 in Victoria Park and about 520 000 visitors are expected.
- (b) **Community Planting Day** A total of 26 Community Planting Days with 12 000 participants will be organised in 2009.
- (c) **Green Volunteer Scheme** Members of the public will be recruited as Green Volunteers in 18 Districts to perform simple garden maintenance in LCSD parks and playground, and to serve as stewards in greening activities organised by LCSD. A total of 360 voluntary greening activities with 5 000 sessions of voluntary services will be provided by volunteers in 2009.
- (d) **Greening School Subsidy Scheme** The Department aims at inviting 790 schools to participate in this Scheme in 2009.
- (e) **“One Person, One Flower” Scheme** The Department targets to distribute 350 000 seedlings to students in 2009.
- (f) **Greening Hong Kong Activities Subsidy Scheme** Seven applications for subsidy to hold greening activities are expected from local organisations in 2009.
- (g) **Greening Exhibitions and Talks** Greening exhibitions and talks on horticulture will be organised at Green Education and Resource Centre in 2009 with a view to educating and arousing public awareness in greening.
- (h) **Community Garden Programme** 40 gardening courses under the programme with 7 000 participants will be organised in 2009.
- (i) **Outreaching Greening Promotional Activities** To promote greening and enhance public awareness in greening and environmental protection, the Department's target is to organise 151 outreaching greening activities in 2009.

(B) Preserving Assets of Our Heritage

3.6 The Department, through its Antiquities and Monuments Office (AMO), is committed to preserving Hong Kong's cultural heritage. Under the Antiquities and Monuments Ordinance, the Antiquities Advisory Board (AAB) advises the Secretary for Development, i.e. the Antiquities Authority, on matters relating to antiquities and monuments. The AMO works closely with AAB and acts as the Authority's executive arm under the Ordinance.

3.7 In addition, the AMO plays an important role in monitoring Environmental Impact Assessment (EIA) projects insofar as their impact on antiquities and monuments is concerned. The work involves inspecting cultural heritage sites, examining mitigation

measures to remedy any possible damage to the sites and conducting, where necessary, rescue excavations at archaeological sites and cartographic recording of historical buildings.

3.8 The AMO also organizes educational programmes to promote heritage preservation among the public.

Performance Targets in 2008

3.9 The targets set for 2008 were -

- to declare 1 monument under the Antiquities and Monuments Ordinance;
- to undertake 60 restoration, repair and maintenance projects for historic buildings/ structures;
- to organise 700 heritage educational programmes; and
- to publish 13 publications.

3.10 It is the Department's conviction that cultural heritage is very much part of our physical as well as cultural environment. Not only does it enhance our built environment and the natural landscape, it also provides an essential, finite and irreplaceable link between the past, the present and the future. It forms the basic points of reference for our cultural identity and traditions.

Actual Performance in 2008

3.11 In 2008, the AMO carried out restoration and repair work on a number of historic buildings, including the Hau Ku Shek Ancestral Hall in Ho Sheung Heung, Fan Sin Temple in Sheung Wun Yiu, Yeung Hau Temple in Ha Tsuen, Tai Fu Tai in San Tin and The Helena May in Central. A conservation study cum cartographic survey for Chik Kwai Study Hall in Pat Heung was also conducted. Full restoration of the Study Hall commenced in October 2008.

3.12 In April 2008, the remains of Longjin Bridge, which adjoined the main gate of the old Kowloon Walled City, were identified through the archaeological impact assessment of the Kai Tak Development. Further investigation was conducted between November 2008 and March 2009. A large-scale rescue excavation at So Kwun Wat in Tuen Mun was launched in November 2008 for completion in June 2009. Archaeological investigations were also arranged in Sai Kung, Yuen Long, Lamma Island and Sha Tau Kok for preservation of archaeological deposits during the building of village houses at those sites.

3.13 On education and publicity, the AMO organised two major exhibitions, including "Preserving Hong Kong's Archaeological and Built Heritage" and "Building Together: 160 Years of Hong Kong-French Common Heritage and Perspectives" at the Hong Kong Heritage Discovery Centre in 2008. In total, the office conducted 769 heritage educational programmes and produced 14 publications.

3.14 A new electronic database, the Hong Kong Traditional Chinese Architectural Information System, was launched in March 2008 enabling the public to gain access to the data of about 200 traditional Chinese villages and buildings in the territory.

3.15 The AMO carried out 63 restoration, repair and maintenance projects for historic buildings. The Maryknoll Convent School in Kowloon Tong, King Yin Lei in Mid-Levels and Green Island lighthouse compound in Hong Kong Island were declared as monuments under the Antiquities and Monuments Ordinance.

Performance Targets in 2009

3.16 The performance targets in preserving assets of heritage for 2009 are -

(a) No. of buildings/structures declared as monuments	2
(b) No. of restoration, repair and maintenance projects for historic buildings/ structures	63
(c) No. of educational programmes	730
(d) No. of publications	14

(C) Providing Aesthetically Pleasing Open Space

3.17 We achieve our objective through -

(I) Land use zoning and acquisition of land for open space development

- We take an active role in negotiating with the Planning Department and Lands Department to acquire more quality and genuine open spaces at good locations with easy accessibility for recreational development.
- Special care has been and will continue to be taken to avoid taking over land which has either low potential for open space development or has excessive site constraints such as steep slopes, drainage reserves, road reserves and polluted sites for recreational use.
- As part of the Government's greening efforts, we have been working with Civil Engineering Development Department to provide simple landscaping to vacant government land in prominent/strategic position with no imminent/known development programme in the near future.

(II) Design of Aesthetically Pleasing Open Space

- We ensure that soft landscape areas are maximised in passive recreation areas. In general, 85% of the site will be used as landscape area.
- Conspicuous flowering and shade trees, colour foliage and flowering shrubs of hardy species will be chosen to create colour contrast and seasonal changes.
- Through careful design, selection of heavy standard trees and increase of planting density, instant greening for new projects will be achieved.
- When planning new open space projects, the facility will be designed and constructed with consideration to its environmental performance such as application of energy saving building services installation and use of environmental friendly materials (e.g. recycled plastic seating benches, refuse bins, etc). Wooden materials from regenerated forests will be used.

Actual Performance in 2008

3.18 In 2008, 27 open space projects (including capital works projects, minor works projects and sponsored projects) were completed, resulting in an increase of about 24.99 hectares of open space in Hong Kong.

Performance Target in 2009

3.19 In 2009, 19 open space projects are scheduled for completion, providing an additional 25 hectares of open space. A list of these projects is shown at [Annex II](#). Apart from new open space projects, there are on-going improvement and upgrading works to existing parks and playgrounds.

(D) Practising Waste Reduction and Energy Savings

3.20 We proactively explore ways to promote waste reduction and energy savings, including conducting energy audits to identify good energy management practices.

3.21 Measures/housekeeping practices adopted in pursuing waste reduction and in saving energy and natural resources are shown below.

(I) On paper saving

3.22 Good practices for economy in the use of paper are set out in Administrative Circular No. 8/2000 and Circular Memorandum 2/2005, which are re-circulated to staff periodically as a reminder. We promoted 'reduce and reuse' for saving paper. We met the target for shifting 70% of the total paper consumption from wood free paper to recycled paper. We also made the following endeavors in 2008 -

- (a) application of PCs, Intranet and e-mail were widely used in the department for internal and external communications, and conveyance of digital photographs and design works. This had not only contributed to office efficiency, but had helped save paper;
- (b) our Information and Public Relations Section had provided an electronic newspaper clipping services to the Department's Lotus Notes users to ensure that the number of hard copies is kept at a minimum through

share reading;

- (c) we produced e-versions of the departmental yearbook and departmental Christmas cards; hard copies were suspended;
- (d) we recycled paper and unserviceable library materials. In the year 2008, 508 890 kg of unserviceable library materials were recycled. Moreover, the email notification service provided readers with the option to receive overdue and reservation notices through e-mail and had thus economised on the use of paper. As at 31.12.2008, about 183 300 registered borrowers had opted for the service;
- (e) museums and Hong Kong Film Archive also reduced waste by recycling exhibition materials and placed collection boxes for collecting used guided maps/pamphlets disposed by patrons after their visits for recycling purpose;
- (f) performing arts venues and programming offices used electronic means to publicize performing arts programmes or to collect feedback. Printing of flyers and house programme had been reduced by monitoring tightly distribution. In addition, unused copies of flyers and house programme had been recycled; and
- (g) in line with the Government's initiative of paper saving, suppliers were encouraged to adopt environment friendly measures in preparation of tender/quotation documents (such as using recycled paper) and minimize the use of packaging materials.

(II) On energy saving

3.23 We managed our resources responsibly with a view to preserving natural resources. We were mindful of our environmental objectives when planning new facilities and maintaining existing facilities. Energy-saving building services installations and environmentally friendly materials were considered. With these efforts, we had been able to reduce electricity consumption and despite reopening of some facilities after their closure for renovation works, installation of additional equipment, the total electricity consumption of the department reduced by 2.69% in 2008/09 when compared with 2007/08. The electricity consumption of the department in 2008/2009 was 363,449,534 kWh. The corresponding indirect emission was 694,189 kg of sulphur dioxide (SO₂), 421,601 kg of nitrogen oxides (NO_x) and 21,807 kg of respirable suspended particulates (RSP)¹. The energy efficiency measures we implemented in 2008 were set out in the ensuing paragraphs.

- (a) high-efficiency lighting systems (fluorescent tubes with electronic ballasts, motion sensors and optical fibres) were used to achieve energy savings as far as possible. The operating hours of venue lightings were rationalized where appropriate to reduce electricity consumption;
- (b) generally, we maintained the 25.5°C office room temperature target set by the Government for the summer months. In cases where, for essential operational reasons and customer service purposes, it is necessary to deviate from this temperature standard in certain areas of specific venues such as museums, sports centres and performing arts venues, we worked closely with the Electrical and Mechanical Services Department (EMSD) to monitor the situation and adjust the room temperature to as close to 25.5°C as possible and appropriate;

1. The indirect emission from electricity consumption is calculated according to the formulae set out in the Guide to Clean Air Charter Report Writing published by EPD in Jan 2008.

- (c) we appealed for staff's support in adopting a more relaxed code of business attire and dress down in the summer for energy conservation and improving air quality in Hong Kong;
- (d) Administration Circular on "Electricity Economy" and Office Green Tips were re-circulated to staff to promote energy conservation;
- (e) for Hong Kong Stadium, the CRT giant display screen was replaced in August 2008 by LED video display model which has lower power consumption and reduces energy consumption by 48%. Good practice of turning off non-essential general lightings and air-conditioning system during non-event days were adopted to sustain energy saving efforts;
- (f) the following measures were adopted in leisure venues –
 - (i) switching off the lights for the facilities without booking;

- (ii) shortening pre-cooling hours as deemed appropriate;
 - (iii) regulating the air-conditioning supply in office area by phases and vacant facilities as deemed appropriate;
 - (iv) separating the lighting control at the arena by sections and lobbies to have a better control on the illumination level;
 - (v) separating the air-conditioning switches at different sports areas by individual switch control so that the air-conditioning system would only be switched on when necessary to save energy;
 - (vi) regulating the air-conditioning temperature of lobbies and working area at 25.5°C to save energy;
 - (vii) adjusting the timer lighting schedule to fit seasonal need and installing the astronomical time switches to the lighting at some parks and playgrounds so that the lighting are switched on/off according to astronomical time of sunset and sunrise to save energy;
 - (viii) permanent switching off of lighting on external walls of some venues;
 - (ix) shortening the operation hours of water features;
 - (x) installing T5 Lighting at arena of some sports centres; and
 - (xi) installing 35 W CDM-T Energy Efficient Lamp at some parks and playgrounds to save energy;
- (g) the following measures were adopted in performing arts venues –
- (i) turning off the air conditioning system in the Main Foyer half an hour/one hour before the close of the venue when there was no performance/activity in the venues;
 - (ii) shortening pre-cool time of the air conditioning system required on stage while maintaining fairly reasonable level of services; and
 - (iii) maximising the use of natural light and turning off the lights in the venue where illumination level was acceptable;
- (h) all museums continued to exercise the following tight measures on energy saving -
- (i) disconnecting/switching off some of the lights in illuminated area at the public corridors and office area;
 - (ii) switching off escalators during museum closing days when maintenance works were carried out;
 - (iii) switching on and off the lights in the public area by phases;
 - (iv) turning on and off the air-conditioning supply in office area by phases to reduce energy consumption;
 - (v) adjusting temperature settings in working area to save energy on air-conditioning;
 - (vi) shortening pre-cooling hours for galleries as deemed appropriate;
 - (vii) installing speed control sensor for outdoor escalator; and
 - (viii) using energy saving lamps in lifts, office and common areas;
- (i) solar panels were installed at the Science Museum, Hong Kong Museum of Coastal Defence, and Hong Kong Museum of Art to promote the energy saving concept;
- (j) the following energy-saving initiatives were carried out at the HQ building -
- (i) removing about 70 no. of fluorescent lamps in the office area and the basement car park to lower the illumination level;

- (ii) installing occupancy sensors on some floors to control the on/off of the lightings;
 - (iii) suspending the operation of a number of lifts during non-peak hours;
 - (iv) replacing 50W tungsten halogen lights and 70W down lights at G/F lobby area by energy saving lights;
 - (v) switching off part of the lightings at G/F entrance and lobby area;
 - (vi) using passenger sensors for the two escalators;
 - (vii) adhering solar control window film at some office area;
 - (viii) using timers to control the water flushing of urinals at male toilets;
 - (ix) suspending the operation of lightings at open space car park; and
 - (x) carrying out surprise checks after office hours to ensure that any unnecessary equipment was turned off while not in use; and
- (k) we regularly reviewed the lighting provisions in our venues with a view to reducing energy consumption as far as practicable. We took part in the campaign of "One-hour-long Lights Out on the Summer Solstice on 21 June 2008" organised by the Friends of the Earth. Except for operational needs and safety/security reasons, we switched off lights in the outer walls and outdoor areas of our venues all year round.

(III) Other Green Measures

3.24 Other green measures adopted are listed below -

- (a) we exercised vigilance in the use of water by regulating outflow of water taps and replacing them with timer-taps at our offices and venues as far as possible;
- (b) we achieved water saving by planting drought tolerant species at suitable locations and using less water for water features in major parks;
- (c) works were carried out at beaches to connect public sewer for disposal of sewage or shower water up to the requirement of Environmental Protection Department. It is estimated that the connection work for all beaches in Tsuen Wan will be completed in 2009;
- (d) we issued good practices in energy saving for operational staff and contractors ([Annex III](#)). They were constantly reminded to follow the good practices to achieve waste reduction and energy savings;
- (e) we promulgated on our Document Library a list of sales term contracts for waste disposal/recycling to facilitate sale/recycling of unserviceable items;
- (f) we promoted the use of more green products such as compost and environmental-friendly pesticide for plants;
- (g) we placed waste separation bins at about 400 venues including parks, playgrounds, sports grounds, beaches, swimming pools, sports centres, water sports centres, outdoor recreation centres, camps, other cultural venues and the headquarters building;
- (h) we encouraged colleagues to avoid the use of products containing volatile organic compounds, especially on high pollution days; and
- (i) we have encouraged our cleansing and horticultural maintenance contractors to review their practice with a view to reducing the use of plastic bags; and consider any substitution for the use of plastic bags where viable. We have reminded our colleagues to conscientiously use fewer plastic bags as far as practicable.

(IV) Clean Air Charter

3.25 On 27 November 2006, the Chief Executive signed the Clean Air Charter on behalf of the Government at the "Business for Clean Air" seminar organised by the Hong Kong General Chamber of Commerce. The Charter was initiated by the business sector in support of the Government's appeal to improve air quality in Hong Kong.

3.26 We have a fleet of 156 vehicles. The total mileage was 2,494,920 km in 2008 and the fuel consumption was 423,094 litres. The related emission was about 13,298kg of NO_x and 1,070kg of RSP². In support of the campaign to improve air quality in Hong Kong, we implemented the following measures -

2.The indirect emission from vehicle fuel consumption is calculated according to the formulae set out in the Guide to Clean Air Charter Report Writing published by EPD in Jan 2008.

- (a) all departmental light buses would gradually be replaced as they retire by LPG vehicles that have lower emission. In addition, one medium saloon will be replaced by environmental-friendly car in 2010. With these measures, emissions and fuel consumptions will significantly be reduced;
- (b) we have planned to gradually replace all Euro I & II emission standard diesel specialized vehicles of our fleet with Euro V lower emission vehicle; and
- (c) we have regularly reminded all departmental drivers to switch off the engine while waiting to reduce emission.

(E) Minimizing Air and Noise Pollution in Organizing Leisure and Cultural Activities

3.27 We monitored closely the generator and machinery installed for activities to ensure that dark smoke emission would not exceed the prescribed requirement as stipulated in the relevant Regulations.

3.28 We monitored the noise level of outdoor events and ensure they were within the limits set in the relevant Regulations.

3.29 We advised the hirers of the Hong Kong Stadium to closely observe the statutory noise level limits under the Noise Control Ordinance for organizing outdoor activities at the Stadium and to take effective mitigation measures to minimize noise disturbance to the nearby residents.

3.30 Following the amendments to the Smoking (Public Health) Ordinance (Cap 371) in 2006, statutory no smoking areas have been extended to cover all indoor workplaces and public places as well as some outdoor public places. The department have implemented the smoking ban in these premises with effect from 1 January 2007.



Environmental Report 2008

Chapter 1Introduction and Controlling
Officer's Profile of
Key Responsibilities**Chapter 2**Environmental
Goal and Policy**Chapter 3**Environmental Management,
Performance Analysis and
Targets / Milestones**Chapter 4**

Towards a Quality Future

Annex**Back to LCSD****Chapter 4****Towards a Quality Future**

- 4.1 We will continue to work towards our environmental goal by -
- planting more trees and increasing the planting of shrubs and seasonal flowers with a view to enhancing the visual impact with more seasonal colours;
 - focusing our efforts of greening promotion on two aspects : family participation and local participation;
 - preserving more assets of our heritage;
 - providing more aesthetically pleasing open space for the enjoyment of the community; and
 - maintaining our efforts in practising waste reduction and saving energy and natural resources for promotion of a greener working environment.
- 4.2 We believe that with the targets and goals we set for ourselves, we will continue to contribute towards a more sustainable development in environmental protection in Hong Kong.

Comments and Suggestions

4.3 This report can be viewed at our homepage at www.lcsd.gov.hk. We welcome any comments and enquiries on this report. Please write to our Departmental Green Manager through any of the following channels –

Mail : 13/F, LCSD Headquarters Building,
1, Pai Tau Street,
Shatin,
N.T.

Fax : 2603 0642

E-mail : enquiries@lcsd.gov.hk



Environmental Report 2008

Chapter 1

Introduction and Controlling
Officer's Profile of
Key Responsibilities

Chapter 2

Environmental
Goal and Policy

Chapter 3

Environmental Management,
Performance Analysis and
Targets / Milestones

Chapter 4

Towards a Quality Future

Annex

[Back to LCSD](#)

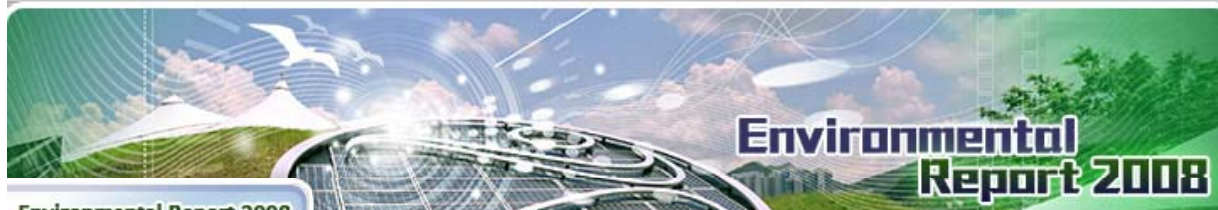
Annex

[Annex I](#) | [Annex II](#) | [Annex III](#)

[Annex I](#)

Summary of Massive Planting Programme 2008

District	Number of			
	Trees	Shrubs	Annuals	Total
C&W	76	135 247	73 716	209 039
Wch	128	43 813	22 188	66 129
E	162	157 308	51 507	208 977
S	91	57 462	13 966	71 519
SSP	508	99 486	9 265	109 259
YTM	835	168 902	38 703	208 440
KC	15	116 951	24 957	141 923
WTS	84	395 346	33 505	428 935
KT	159	109 564	8 198	117 921
Is	115	157 940	5 120	163 175
TM	420	97 269	25 186	122 875
YL	950	268 868	14 999	284 817
KwT	493	149 472	20 835	170 800
TW	1 256	159 430	11 262	171 948
N	557	182 793	35 194	218 544
TP	29	105 255	16 748	122 032
ST	4 498	293 992	75 484	373 974
SK	153	213 665	23 113	236 931
	10 529	2 912 763	503 946	3 427 238



Environmental Report 2008

Chapter 1

Introduction and Controlling
Officer's Profile of
Key Responsibilities

Chapter 2

Environmental
Goal and Policy

Chapter 3

Environmental Management,
Performance Analysis and
Targets / Milestones

Chapter 4

Towards a Quality Future

Annex

[Back to LCSD](#)

Annex

[Annex I](#) | [Annex II](#) | [Annex III](#)

[Annex II](#)

A. Open Space Projects Completed in 2008

<u>Item No.</u>	<u>District</u>	<u>Project Title</u>	<u>Additional Open Space Area (ha)</u>
1	Is	District Open Space in Area 2, Tung Chung	0.77
2	Is	Open Space Development at Area 40, Tung Chung, Lantau	0.70
3	Is	Open Space Development at Area 27, Tung Chung, Lantau	0.28
4	KwT	District Open Space adjoining Kwai Chung Estate	0.94
5	N	District Open Space in Area 39, Fanling/Sheung Shui	1.26
6	N	Local Open Space in Area 28, Fanling/Sheung Shui	1.30
7	N	Local Open Space in Area 29, Fanling/Sheung Shui	0.11
8	N	Local Open Space in Area 29A, Fanling/Sheung Shui	0.27
9	SSP	Sham Shui Po Park - Stage 2	1.90
10	SK	District Open Space in Area 40A, Tseung Kwan O	2.20
11	SK	Provision of a Temporary Cycling Park at Area 74 of Tseung Kwan O (DMW project)	0.55
12	ST	Local Open Space in Area 11, Shatin	0.78
13	ST	Pak Shek Kok Waterfront Promenade	2.10
14	ST	Dog Garden at the Junction of Sai Sha Road & Hang Fai Street, Ma On Shan	0.24
15	TP	Pak Shek Kok Waterfront Promenade	2.20
16	TW	Local Open Space in Area 50, Sham Tseng, Tsuen Wan	0.60
17	TW	District open space in Area 35, Tsuen Wan - phase 2	2.50
18	TM	Local Open Space in Area 16 (Yau Oi South), Tuen Mun	1.90

19	WTS	Phase 1 of Ex-Wong Tai Sin Bazaar	0.16
20	YTM	Open Space at Tai Kok Tsui Temporary Market	0.37
21	YTM	Development of Open Space at J/O Fuk Tsun Street/Larch Street/Tai Kok Tsui Road	0.10
22	YTM	Yau Tsim Mong Pet Garden	0.23
23	YTM	Sycamore Street Rest Garden	0.06
24	YTM	Open Space at Maple Street Refuse Collection Point	0.01
25	YTM	Canton Road / Soy Street Sitting-out Area	0.03
26	YL	District Open Space in Area 107 Tin Shui Wai	2.70
27	YL	District Square in Areas 33A and 29, Tin Shui Wai	0.73
		Total	24.99

B. Open Space Projects to be Completed in 2009

<u>Item No.</u>	<u>District</u>	<u>Project Title</u>	<u>Additional Open Space Area (ha)</u>
1	KT	District Open Space adjoining Sau Mau Ping public housing development	2.00
2	KT	Provision of Open Space at Jordan Valley Flatted Factory Site	0.23
3	KT	District / Local Open Space adjoining Choi Wan public housing development	4.09
4	TM	Local Open Space in Area 52, Tuen Mun	0.26
5	KwT	District open space in Shek Yam Estate-phases 1 and 4, Kwai Chung	1.50
6	KwT	District Open Space in Area 9, Tsing Yi	5.60
7	ST	Ma On Shan Waterfront Promenade (Phases 1 & 2)	2.96
8	S	Wah Fu Rest Garden	0.56
9	E	Fu Hong Street Sitting-out Area	0.40
10	SSP	Provision of a children playground and a Rest Garden near Hoi Lai Estate	0.44
11	YTM	Development of Open Space at J/O Sham Mong Road and Chui Yu Road	0.42
12	SK	Local Open Space in Area 73B, Tseung Kwan O	0.39
13	SK	Provision of a Temporary Sitting-out Area at Area 56, Tong Chun Street & Tong Ming Street, Tseung Kwan O	0.22
14	N	Living Environment Improvement Works at Man Kok Village, Sheung Shui (DMW project)	0.06
15	C&W	Landscaped Park at Sheung Wan Stormwater Pumping Station at Sheung Wan Gala Point	0.57
16	C&W	Improvement works to the Promenade next to Sheung Wan Salt Water Pumping Station	0.03

17	WTS	Phase 1 of District Open Space at Po Kong Village Road	4.60
18	WTS	Phase 2 of Wong Tai Sin Square	0.17
19	WTS	Phase 1 of Ngau Chi Wan Park	0.50
Total			25.00

2009  | [Important notices](#) | [Privacy policy](#)

Last revision date: 8 December, 2009



Environmental Report 2008

Chapter 1Introduction and Controlling
Officer's Profile of
Key Responsibilities**Chapter 2**Environmental
Goal and Policy**Chapter 3**Environmental Management,
Performance Analysis and
Targets / Milestones**Chapter 4**

Towards a Quality Future

Annex[Back to LCSD](#)**Annex**[Annex I](#) | [Annex II](#) | [Annex III](#)[Annex III](#)**Proposed Good Practices for Operational Staff and Contractors**

1. Choose energy efficient electrical appliances.
2. Do without unnecessary electrical appliances, e.g. electric pencil sharpener.
3. Use power-saving light bulbs.
4. Reduce lighting to minimum level required for illumination.
5. Switch off the air-conditioner and lights on leaving the room.
6. Use lead-free petrol.
7. Switch off vehicles or machines when not in use.
8. Save paper, print or photocopy only when necessary.
9. Write on both sides of every piece of paper before throwing it away.
10. Reuse envelopes.
11. Send waste paper for recycling.
12. Use your own cup. Avoid throw-away paper cup and other utensils.
13. Separate garbage in paper, can and bottle and send them to collection centers for recycling.
14. Reuse polythene bags if possible.
15. Put used batteries in litterbins. Do not leave them outdoor or throw them into water.
16. No smoking in public places.
17. Save water. Turn off water taps when not in use. Repair leaked water taps as soon as possible.
18. Minimize copies of circulars (e.g. by circulating a copy to staff).
19. Reuse loose minute jackets.
20. Avoid use of fax leader pages.
21. Minimize copies of flimsies and reference copies at meetings.
22. Photocopy on both sides of every piece of paper as far as possible.
23. Photocopy on the unused side of waste paper for internal use documents.