

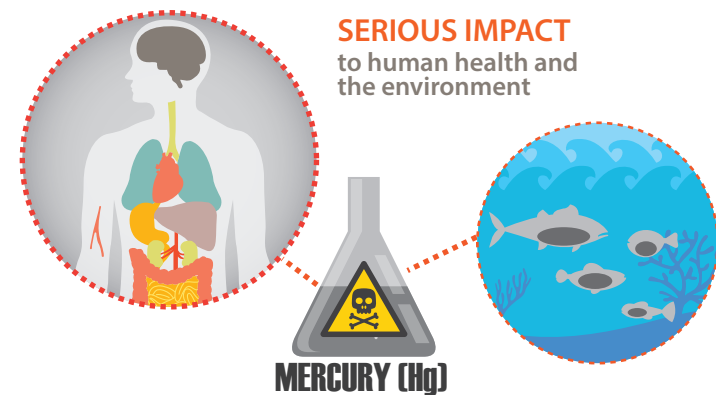
MERCURY CONTROL ORDINANCE

(Cap. 640) EFFECTIVE FROM 1 December 2021



Enquiry 2838 3111

Mercury and its potential effects



SERIOUS IMPACT
to human health and the environment

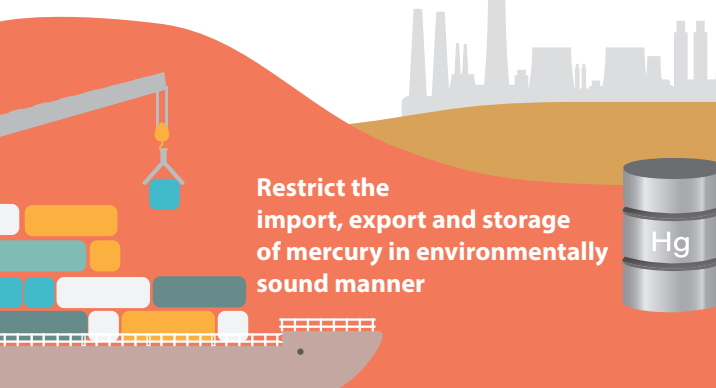
MERCURY (Hg)

Minamata Convention on Mercury

Protect human health and the environment from anthropogenic emissions and releases of mercury

OBLIGATIONS UNDER THE CONVENTION

Phase out regulated manufacturing processes in which mercury or mercury compounds are used



Restrict the import, export and storage of mercury in environmentally sound manner

Phase out mercury-added products (MAPs)



Mercury Control Ordinance

Ensures the Hong Kong Special Administrative Region's full compliance with obligations of the Convention

4 main provisions

1 Permit system to control the import and export of mercury

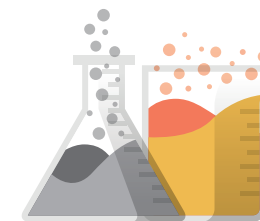


EXPORT/IMPORT

except under an export/import permit



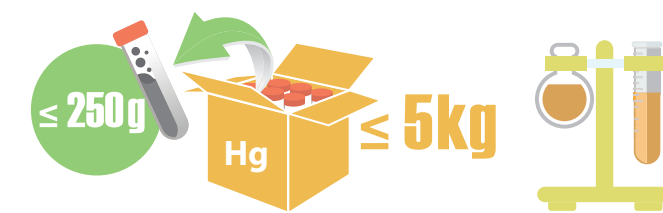
Mercury



Mercury mixture

EXEMPTION

Use for laboratory-scale research or as a reference standard



≤ 250g

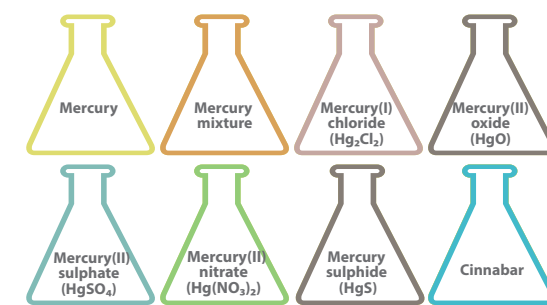
≤ 5kg



2 Permit system to control the storage of mercury and mercury compounds

KEEP OR USE

except under a possession permit



Mercury

Mercury mixture

Mercury(II) chloride (Hg₂Cl₂)

Mercury(II) oxide (HgO)

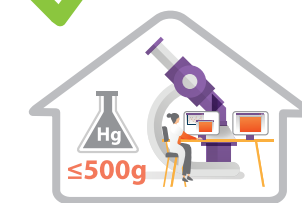
Mercury(II) sulphate (HgSO₄)

Mercury(II) nitrate (Hg(NO₃)₂)

Mercury sulphide (HgS)

Cinnabar

EXEMPTION

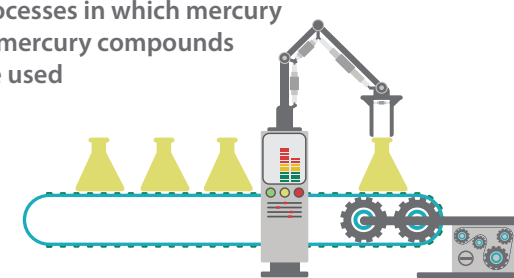


Keep for use in laboratory-scale research or as a reference standard

In 1 single laboratory

3 Prohibit regulated manufacturing processes in which mercury or mercury compounds are used

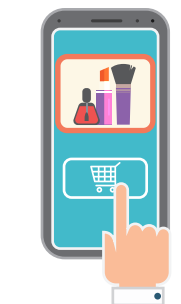
Carry out regulated manufacturing processes in which mercury or mercury compounds are used



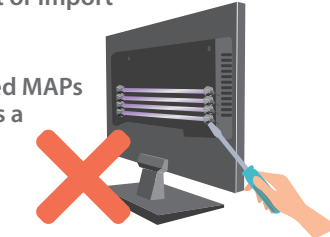
4 Prohibit the manufacture, import and export of regulated MAPs



Manufacture, export or import



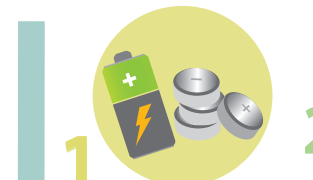
Incorporate regulated MAPs into another thing as a component



Supply, including online exhibiting for supplying, on or after 1 December 2024

Storage or use of regulated MAPs does not constitute an offence

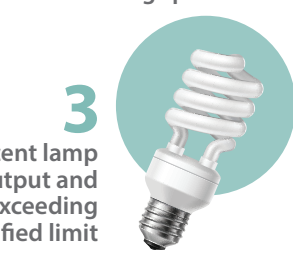
REGULATED MAPs



1 Battery with mercury content exceeding specified limit



2 Switch and relay with mercury content exceeding specified limit



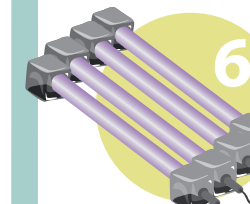
3 Compact fluorescent lamp with power output and mercury content exceeding specified limit

REGULATED MAPs

4 Linear fluorescent lamp with power output and mercury content exceeding specified limit



5 High pressure mercury vapour lamp



6 Cold cathode fluorescent lamp and external electrode fluorescent lamp with the length and mercury content exceeding specified limit

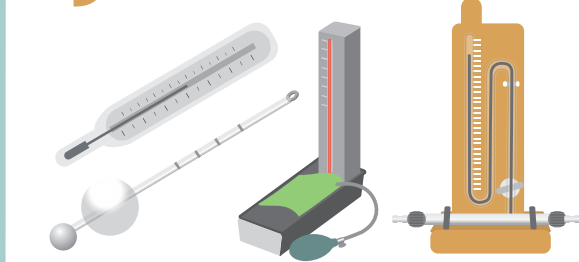
7 Cosmetics with mercury content exceeding specified limit



8 Biocide and topical antiseptic



9 Non-electronic measuring devices



Please refer to the EPD website for details of the regulated MAPs



WHAT CAN YOU DO?

Use of mercury-free substitutes in the market



Proper disposal of regulated household MAPs

Compact fluorescent lamp and Linear fluorescent lamp @ Recycling Stations and Recycling Stores

Mercury-containing Non-electronic Measuring Devices @ Recycling Stations

