



# 廚餘

FOOD WASTE

## 廚餘收集先導計劃 (家居)

Pilot Scheme on Food Waste Collection (Domestic Sector)



### 關於先導計劃

About the Scheme



環境保護署於2021年推展更大規模的「廚餘收集先導計劃」。除了收集公私營機構的廚餘，亦逐步推展至回收家居廚餘。先導計劃所收集經源頭分類的廚餘，會運往有機資源回收中心第一期(O•PARK 1)處理，將其轉化為能源及堆肥。

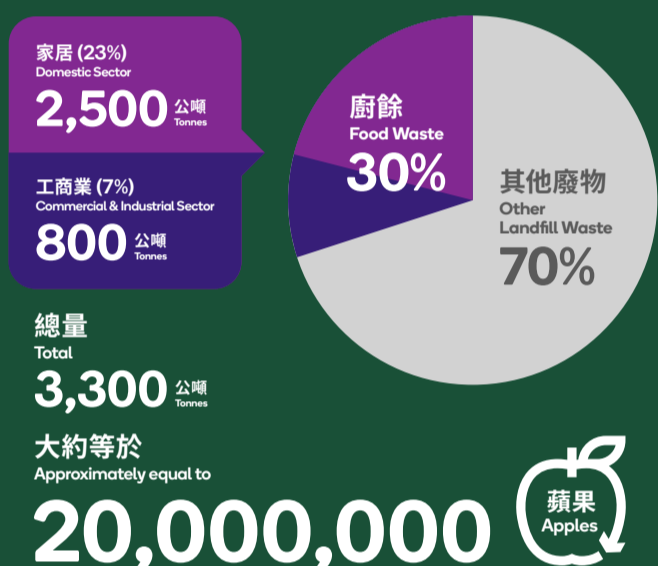
The Environmental Protection Department launched a larger scale "Pilot Scheme on Food Waste Collection" in 2021. In addition to recycling food waste from public and private premises, it has also been progressively expanded to recycle domestic food waste. Source-separated food waste collected under the Pilot Scheme is transformed into energy and compost at O•PARK 1.

### 廚餘數據 Food Waste Facts

廚餘主要是在食物製作、準備食材及用餐過程中產生的廢物，包括生/熟食物、可食用和不可食用的部分。  
Food waste is any waste, including raw, cooked, edible and inedible parts generated mainly during food production, meal preparation and consumption of meals.

#### 2020年每日堆填區廢物棄置量

Daily solid waste for landfill disposal in 2020



### 回收的好處 Benefits of Recycling

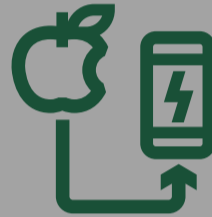
將廚餘和垃圾分開，減少臭味問題

Separate food waste from general waste to reduce odour nuisance



充份利用有機資源，避免棄置堆填區

Make good use of organic resources to avoid landfill disposal



減低垃圾量，節省廢物收費

Reduce waste quantity to make saving on waste charging



培養回收好習慣，提升環保形象

Cultivate good recycling habits & enhance green image



### 回收步驟 Recycling Steps

- 1 去除非廚餘物質 → 2 瀝乾水分 → 3 使用小型容器將廚餘帶到回收點 → 4 將廚餘倒入廚餘桶
- Remove non-recyclable food waste → Drain liquid → Use a small container to bring food waste to collection point → Pour food waste into food waste bin

### 可回收 YES

生、熟、吃剩或變壞食物也是「可回收廚餘」。  
Raw, cooked, leftover or spoiled food is 'recyclable food waste'.



**穀物**  
Wheat & Grains  
米飯、粉麵、麵粉、麵包、燕麥  
Rice, pasta/noodles, flour, bread, oats



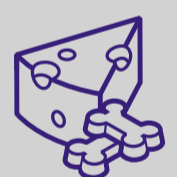
**蔬果**  
Fruits & Vegetables  
水果、蔬菜、菇類、豆類及其製品 (包括皮、核、種子)  
Fruits, vegetables, mushrooms, beans & their products (including peelings, cores, pips)



**肉類**  
Meats  
豬肉、牛肉、海產、家禽及其製品 (包括內臟、魚鱗、小骨頭)  
Pork, beef, seafood, poultry & their products (including innards, scales, small bones)



**殘渣**  
Residues  
茶葉渣、湯渣、咖啡渣、中藥渣  
Tea leaves, soup pulp, coffee grounds, chinese medicinal pulp



**其他**  
Others  
乳製品、甜品、堅果、醬料、寵物食品  
Dairy products, desserts, nuts, sauces, pet food

### 不接受 NO

如不確定能否回收，請詢問工作人員或避免放入廚餘桶。  
If you have doubt, please ask staff or avoid putting it into food waste bin.



**惰性物料**  
Inert Materials  
包裝袋、飲管、罐頭、餐具/餐盒、玻璃樽、茶包、紙巾、牙籤  
Packaging, straws, cans, utensils/containers, glass bottles, teabags, tissue paper, toothpicks



**水分過多廚餘**  
Watery Food  
湯、粥、飲品  
Soup, porridge, drinks



**過硬物料**  
Hard Materials  
貝殼、蟹蓋、榴槿殼、粟米芯、椰青、芒果核  
Seashells, crab covers, durian shells, corncobs, young coconuts, mango cores



**過大物料**  
Oversized Materials  
豬筒骨、斧頭扒骨  
Pork femur bones, tomahawk ribs



**其他**  
Others  
枝葉、雜草、切花、節日植物、藥物、口罩  
Branches, leaves/weeds, cut flowers, festive plants, medicines, surgical masks

廚餘例子未能盡錄 Food waste examples are not exhaustive

#### 提提你 Reminder

- 小型骨頭(即長度大致不超過一枝牙籤)或軟殼類海產(如蝦/蟹殼)是可回收。
- 回收前須先除去食物包裝。
- 如有需要，可把廚餘暫時冷藏，有助減少氣味。
- Small bones (not exceeding the length of a toothpick in general) or softshells (e.g. shrimp/crab shells) are recyclable.
- Food packaging must be removed before recycling.
- Food waste can be temporarily refrigerated to reduce odour, if needed.



回收廚餘·減省開支! \*  
Waste Less · Pay Less!



了解計劃詳情  
Learn more about the Scheme  
T 2838 3111  
E fwc@epd.gov.hk

特定車輛每天會到參與處所收集廚餘，再運往 O•PARK 1 處理。  
Designated trucks collect food waste from participating premises and deliver to O•PARK 1 for recycling every day.

\* 都市固體廢物收費預計於2023年內正式實施。  
The Municipal Solid Waste Charging is expected to be formally implemented in 2023.