



廚餘

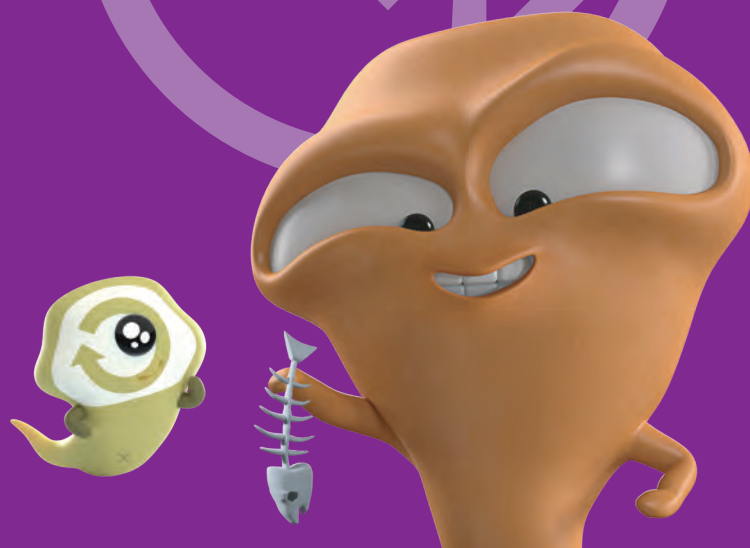
FOOD WASTE

廚餘收集服務 (家居)

Food Waste Collection Services
(Domestic Sector)



環境保護署
Environmental
Protection
Department



關於收集服務 About the Services

環境保護署於 2021 年推展大規模的「廚餘收集服務」。除了收集公私營機構的廚餘，亦推展至回收家居廚餘。收集到的廚餘會被送到處理設施，再轉化為電力和堆肥。

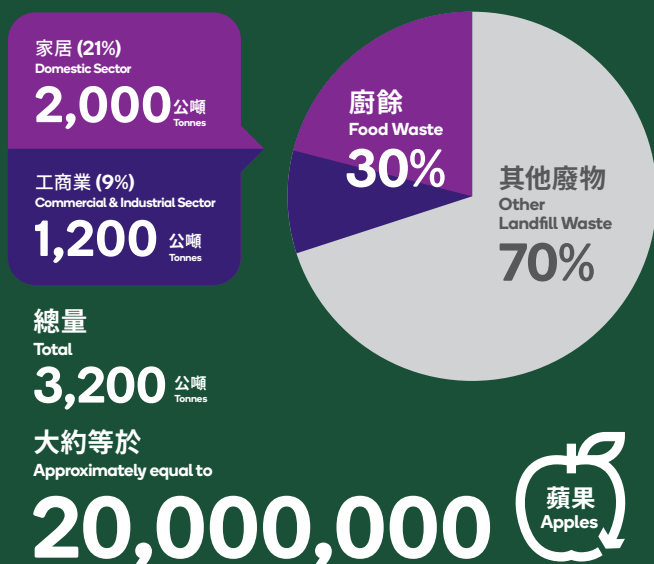
The Environmental Protection Department launched a large scale “Food Waste Collection Services” in 2021. In addition to recycling food waste from public and private premises, it has also expanded to recycle domestic food waste. The collected food waste will then be sent to treatment facilities to be converted into electricity and compost.

廚餘數據 Food Waste Facts

廚餘主要是在食物製作、準備食材及用餐過程中產生的廢物，包括生/熟食物、可食用和不可食用的部分。

Food waste is any waste, including raw, cooked, edible and inedible parts generated mainly during food production, meal preparation and consumption of meals.

2023年每日堆填區廢物棄置量
Daily solid waste for landfill disposal in 2023



回收的好處 Benefits of Recycling

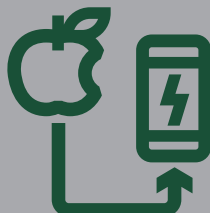
將廚餘和垃圾分開
改善臭味和環境衛生

Separate food waste from general waste to improve odour and sanitation



充份利用有機資源
轉廢為能

Make good use of organic resources to turn food waste into renewable energy



減少垃圾
棄置於堆填區

Reduce the amount of waste disposed of at landfills



獲取「回收夥伴」認證，
提升環保企業形象

Obtain “Recycling Participate” recognition & enhance green corporate image



回收步驟 Recycling Steps

- 1

去除非廚餘物質
Remove non-food waste
- 2

將廚餘隔水
Drain liquids from the food waste
- 3

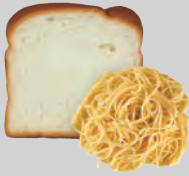
使用小型容器或膠袋
盛載廚餘到回收點
Use a small container or a plastic bag to bring food waste to collection points
- 4

將廚餘放入
廚餘回收桶
Put food waste into food waste recycling bins



可回收 YES

生、熟、吃剩或變壞食物也是「可回收廚餘」。
Raw, cooked, leftover or spoiled food is 'recyclable food waste'.



穀物
Wheat & Grains
米飯、粉麵、麵粉、
麵包、燕麥
Rice, pasta/noodles,
flour, bread, oats



蔬果
Fruits & Vegetables
水果、蔬菜、菇類、
豆類及其製品
(包括皮、核、種子)
Fruits, vegetables, mushrooms,
beans & their products
(including peelings, cores, pips)



肉類
Meats
豬肉、牛肉、海產、
家禽及其製品 (包括
內臟、魚鱗、小骨頭)
Pork, beef, seafood, poultry &
their products (including
innards, scales, small bones)



殘渣
Residues
茶葉渣、湯渣、
咖啡渣、中藥渣
Tea leaves, soup pulp,
coffee grounds,
chinese medicinal pulp



其他
Others
乳製品、點心、糕餅、
堅果、醬料
Dairy products, dim sums,
pastries, nuts, sauces



不接受 NO

如不確定能否回收，請詢問工作人員或避免放入廚餘桶。
If you have doubt, please ask staff or avoid putting it into food waste bin.



一般垃圾
General Waste
包裝袋、飲管、罐頭、
餐具/餐盒、玻璃樽、
茶包、紙巾、牙籤
Packaging, straws, cans,
utensils/containers,
glass bottles, teabags,
tissue paper, toothpicks



水分過多
Watery Food
湯、粥、飲品
Soup, porridge, drinks

廚餘例子未能盡錄 Food waste examples are not exhaustive

提提你 Reminder

- 一般垃圾和其他可回收物(如玻璃樽、金屬罐)須分開處理，不可放入廚餘桶。

• 回收前須先除去食物包裝。

• 如有需要，可把廚餘暫時冷藏，有助減少氣味。
- General waste and other recyclables (e.g. glass containers, cans) should be handled separately without putting into food waste bins.

• Food packaging must be removed before recycling.

• Food waste can be temporarily refrigerated to reduce odour, if needed.

廚餘唔好嘅!
Food Waste, Waste Not!



了解計劃詳情
Learn more about
the Scheme
T 2838 3111
E fwc@epd.gov.hk

特定車輛每天會到參與處所收集廚餘，再運往廚餘處理設施。
Designated trucks collect food waste at participating premises and deliver to food waste treatment facilities every day.